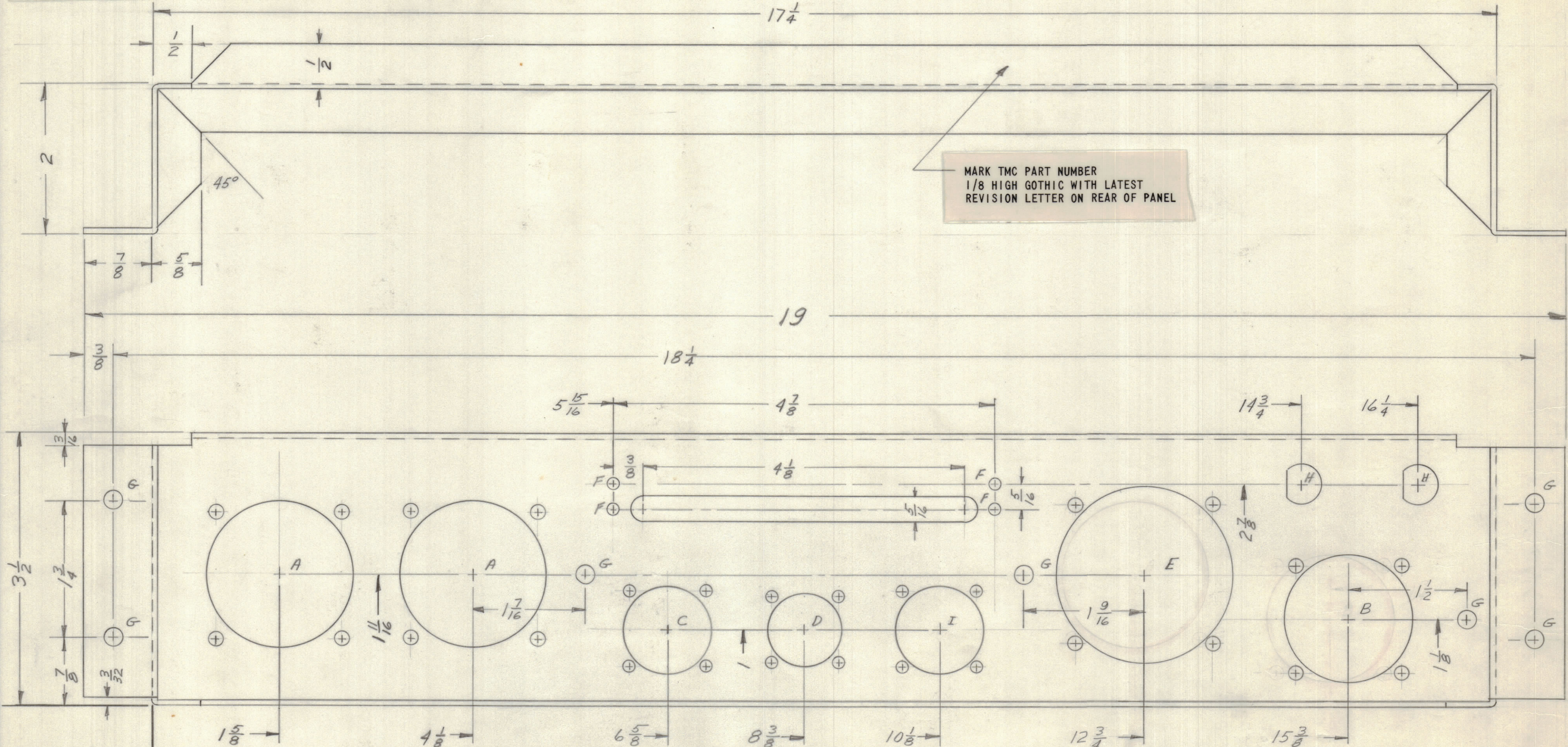


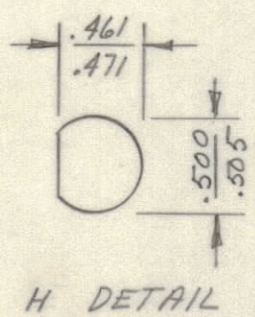
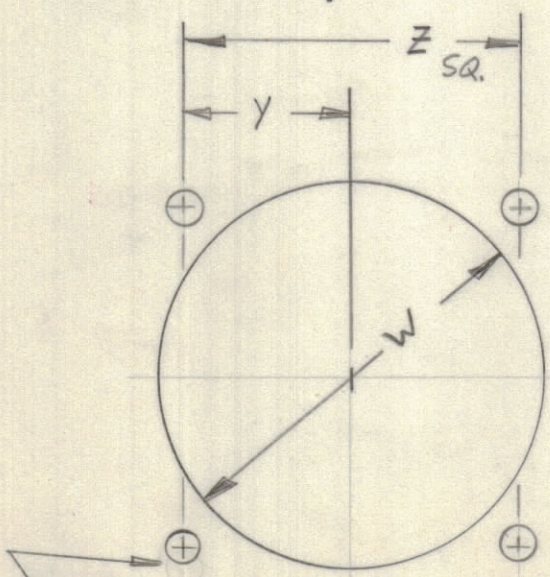
UNLESS OTHERWISE SPECIFIED:

1. USE MATERIAL THICKNESS FOR MAXIMUM RADIUS ON ALL BENDS.
2. ALL ANGULAR BENDS 90 DEGREES.
3. REMOVE ALL BURRS AND SHARP EDGES.
4. MOUNT INSERTS AFTER FINISHING.

REVISIONS					DATE	APPROVED
E.M.N.NO	DRAFT	CHKD	ZONE	LTR	DESCRIPTION	
					ORIGINAL RELEASE	6/23/69



LOCATING BASELINES



DETAIL	W	X	Y	Z	REQ.
A	1-13/16	11/64	25/32	1-9/16	3
B	1-9/16	11/64	11/16	1-3/8	1
C	1-1/16	9/64	31/64	31/32	1
D	15/16	9/64	29/64	29/32	1
E	2-1/8	11/64	7/8	1-3/4	1
I	1-3/16	9/64	17/32	1-1/16	1

- F 9/64 DIA. 4 REQ.
- G 15/64 DIA. 7 REQ.
- H SEE DETAIL 2 REQ.

QTY / UNIT	MODEL USED ON	ASS'Y NO.
2	SBGR-4YA	RAK136-2
APPLICATION		
CODE		

NOTICE TO PERSONS RECEIVING THIS DRAWING  
 THE TECHNICAL MATERIEL CORPORATION claims proprietary right in the material disclosed herein. This drawing is issued in confidence for engineering information only and may not be reproduced or used to manufacture anything shown hereon without permission from THE TECHNICAL MATERIEL CORPORATION to the user. This drawing is loaned for mutual assistance and is subject to recall at any time.

REF: LD 2359

QTY. REQ.	ITEM	PART NO.	DESCRIPTION	SYMBOL
LIST OF MATERIAL				
THE TECHNICAL MATERIEL CORP. MAMARONECK, NEW YORK				
CHASSIS INTERFACE				
MATERIAL .081 ALUM 5052-H32		SIZE CODE IDENT NO. DWG NO. ISSUE C 82679 MS 5488		
FINISH SA04 YEL IRID.		SCALE SHEET OF		

TOLERANCES ON	
DECIMALS	FRACTIONS
.X ± .05	± 1/64
.XX ± .01	ANGLES
.XXX ± .005	± 0° -30°

FINAL APPROVAL	DATE
<i>[Signature]</i>	6/26/69
MECH. DES.	DATE
<i>[Signature]</i>	25 Jun 69
ELECT. DES.	DATE
<i>[Signature]</i>	
CHECKED	DATE
<i>[Signature]</i>	6/23/69
DRAWN	DATE
<i>[Signature]</i>	21 MAY 69