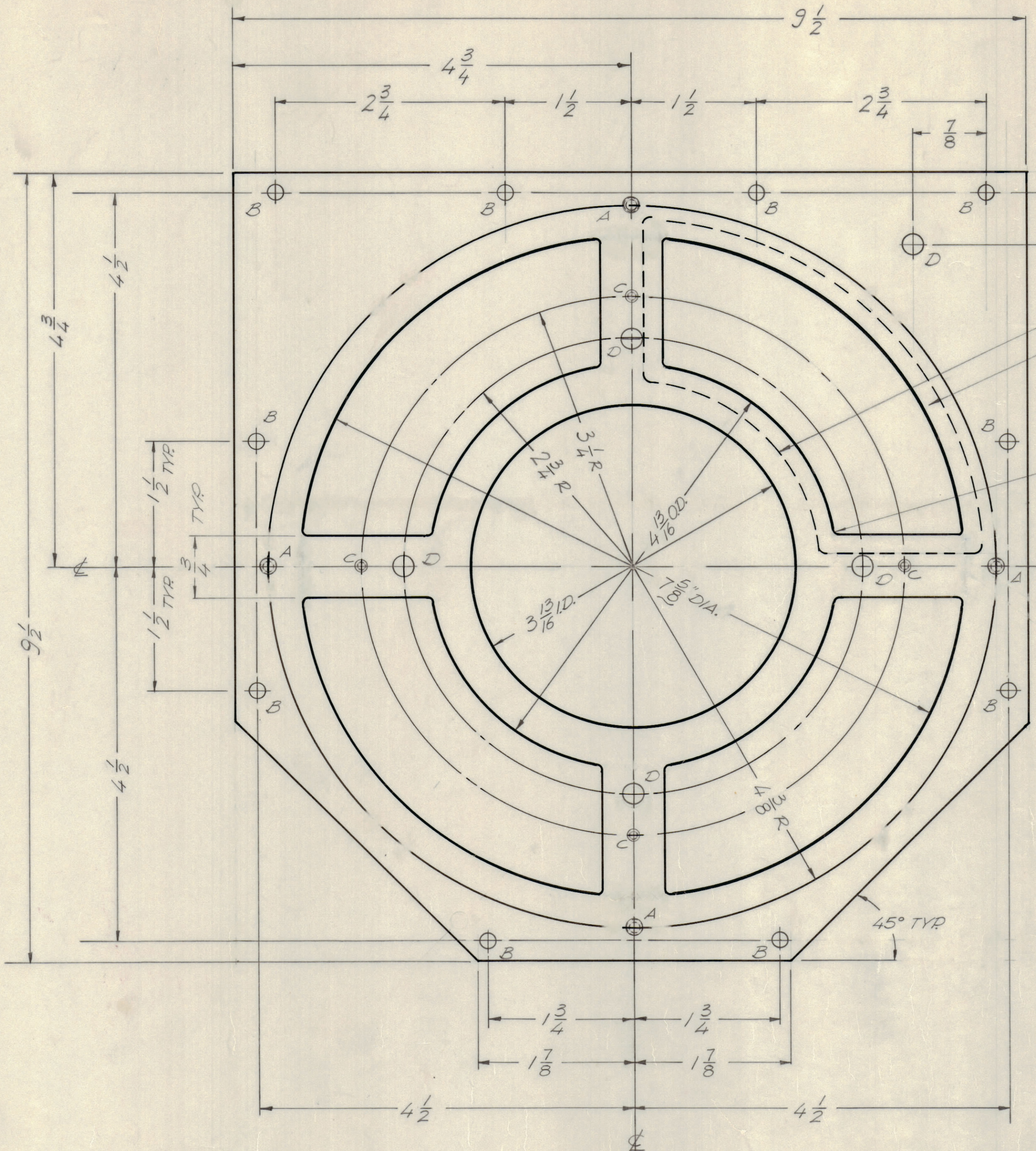
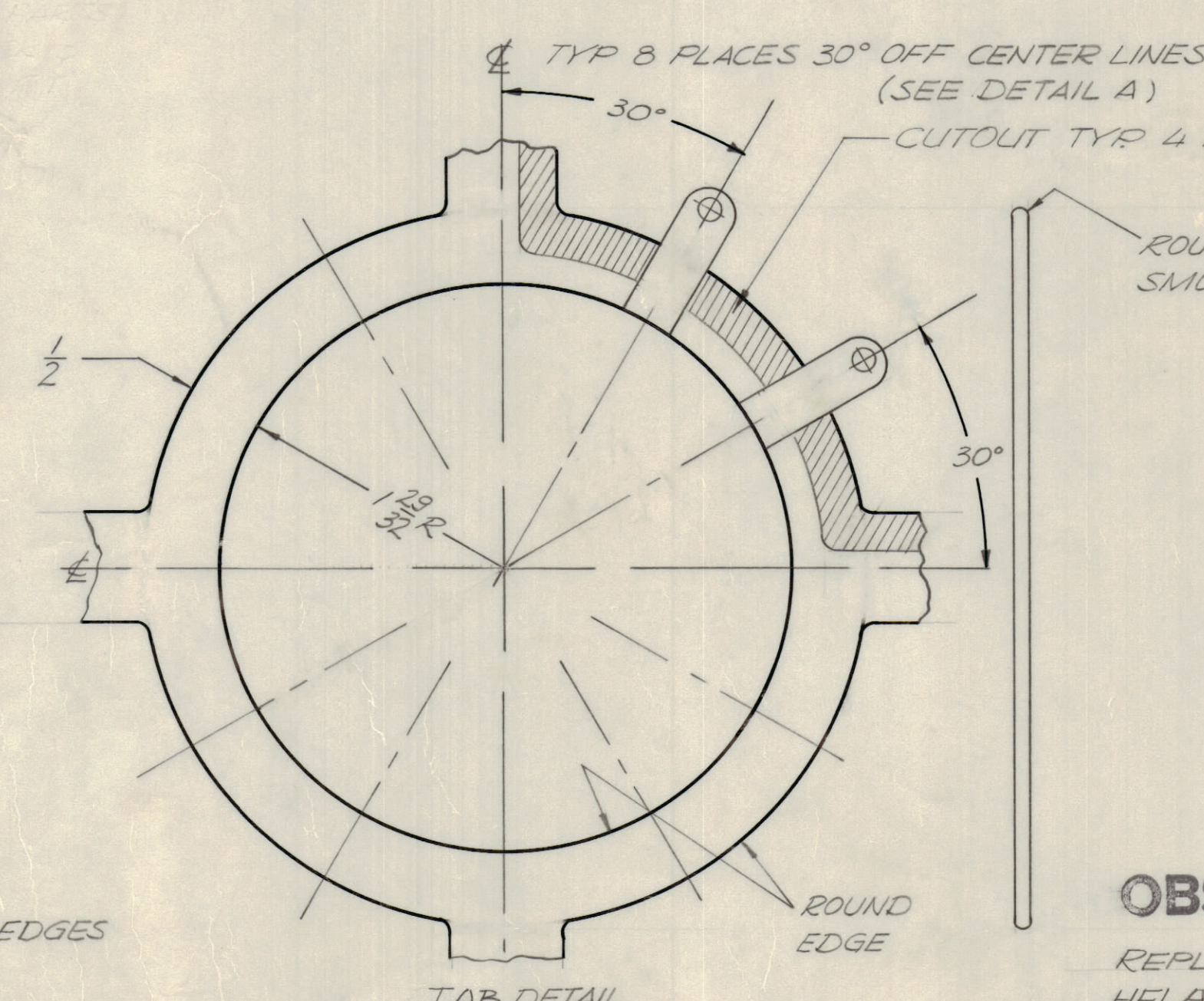
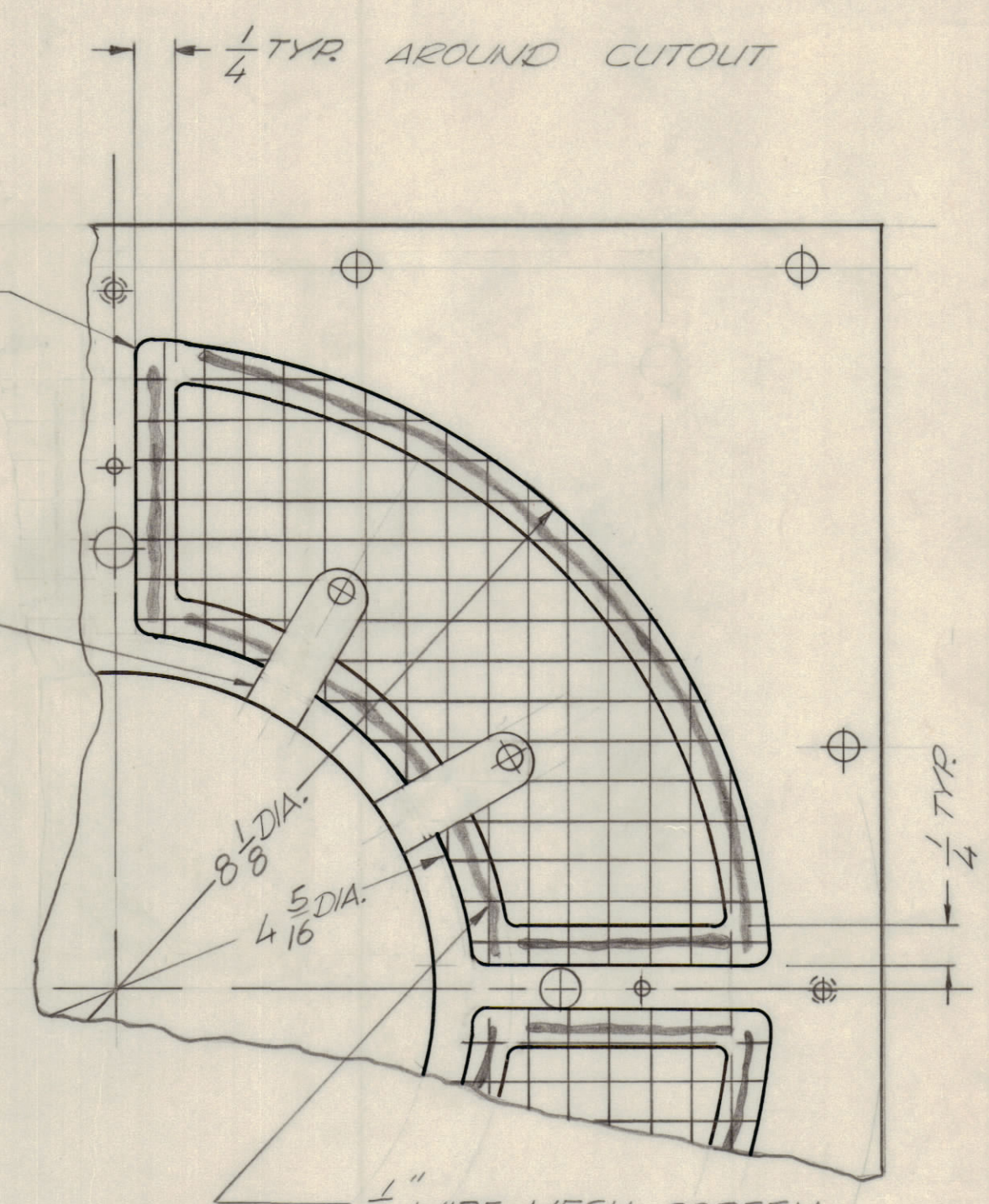
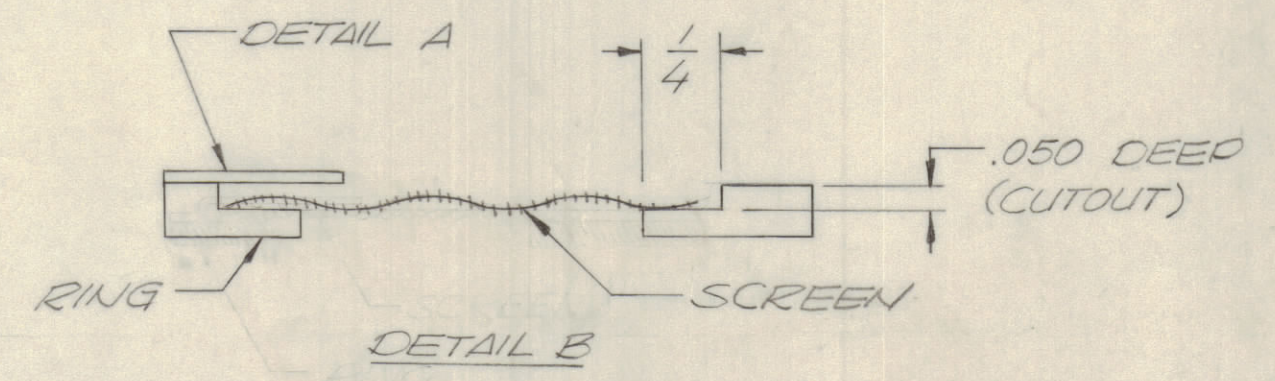


REVISIONS							
E.M.N.NO	DRAFT	CHKD	ZONE	LTR	DESCRIPTION	DATE	APPROVED
	GE			X	REDRAWN	11-25-69	
	GE			Ø	ORIGINAL RELEASE FOR PRODUCTION	1-14-70	
19848	GE	JFB		A	REVISED MESH ASSY DETLS.	5/7/70	FB
20574	GE			B	OBSOLETE NOTE ADDED	4/7/72	CF



SEE RING DETAIL
1/4 CUTOUT SEE DETAIL B TYR 4 PLACES



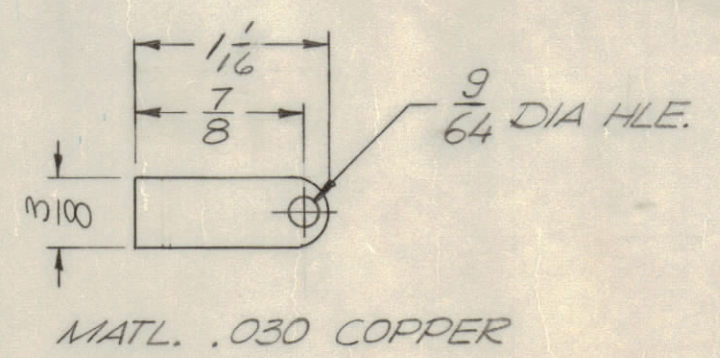
1/4 WIRE MESH SCREEN NOT TO EXCEED DIAMETERS SHOWN. DARK AREAS INDICATE BRAZE AREAS. NOTE: PREPARE PLATE AND SCREEN FOR BRAZING BY TINNING.

HOLE DESCRIPTION	REQ
A DRILL & TAP 4-40	4
B 1/84 DIA.	10
C DRILL & TAP 6-32	4
D 15/64 DIA.	5

NOTE: WIRE MESH TO BE .032 GA. 4 PER INCH

OBSOLETE

REPLACED BY MS6343 USE FOR PALA-10K & HFLA-10K WITH 8794 FINAL AMP SPARE PARTS ONLY.



QTY / UNIT	MODEL USED ON	ASSY NO.
1	PALA-10K	BMAS83
APPLICATION		
CODE		
MATERIAL .090 BRASS		
FINISH SILVER PLATE		

UNLESS OTHERWISE SPECIFIED DIMENSIONS ARE IN INCHES AND INCLUDE CHEMICALLY APPLIED OR PLATED FINISHES

TOLERANCES ON
DECIMALS X ± .05
XX ± .01
XXX ± .005

FRACTIONS ± 1/64
ANGLES ± 0° - 30°

QTY. REQ.	ITEM	PART NO.	DESCRIPTION	SYMBOL
F. BUDETTI LIST OF MATERIAL				
FINAL APPROVAL		DATE	THE TECHNICAL MATERIEL CORP.	
MECH. DES.		DATE	MAMARONECK, NEW YORK	
ELECT. DES.		DATE	PLATE, MTG. SOC.	
CHECKED		DATE		
DRAWN		DATE		
MATERIAL .090 BRASS		DATE	SIZE	CODE IDENT NO.
FINISH SILVER PLATE		DATE	D 82679	MS 5513
SCALE		SHEET		OF

NOTICE TO PERSONS RECEIVING THIS DRAWING
THE TECHNICAL MATERIEL CORPORATION claims proprietary right in the material disclosed herein. This drawing is issued in confidence for engineering information only and may not be reproduced or used to manufacture anything shown herein without permission from THE TECHNICAL MATERIEL CORPORATION to the user. This drawing is loaned for mutual assistance and is subject to recall at any time.