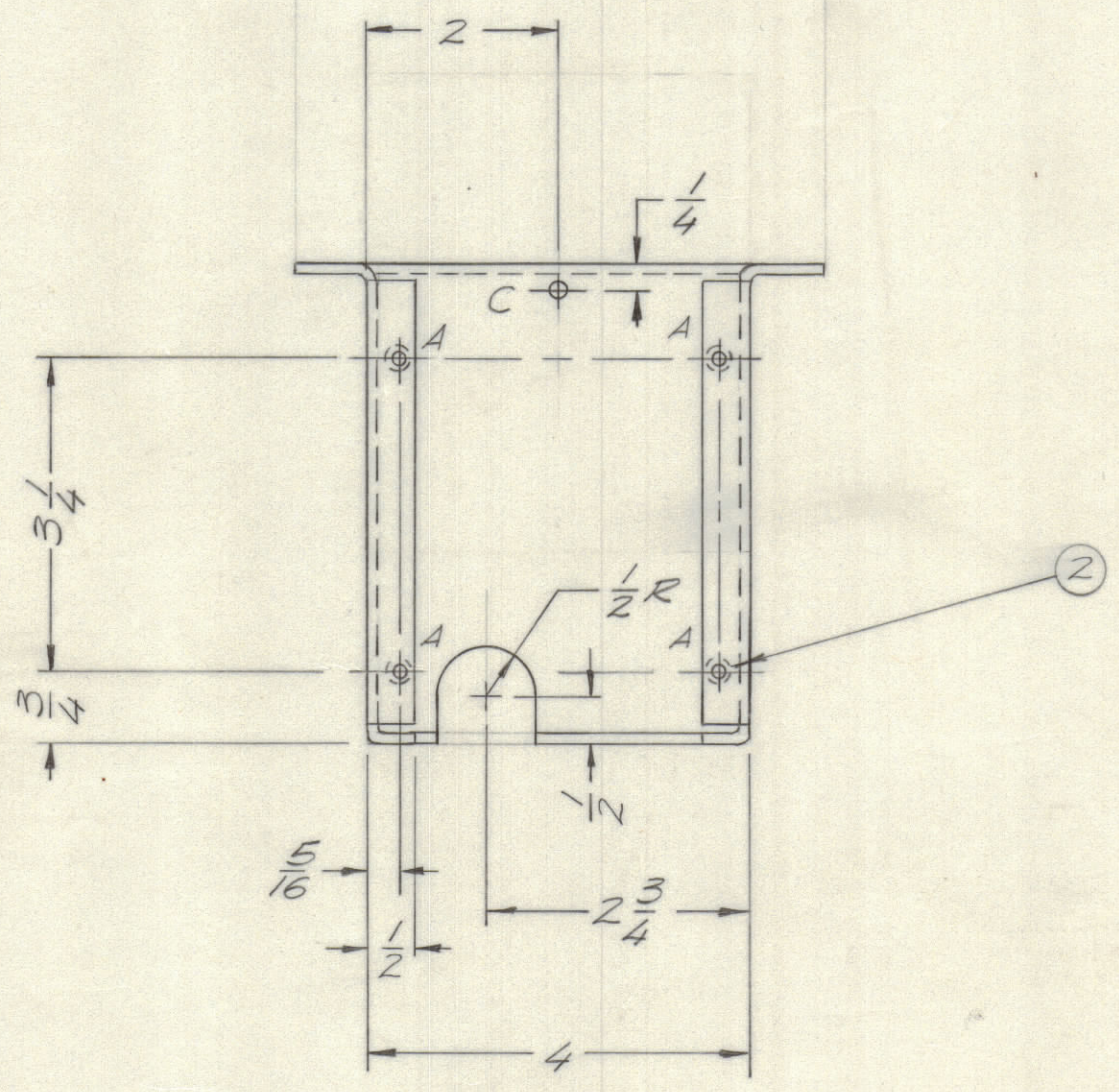
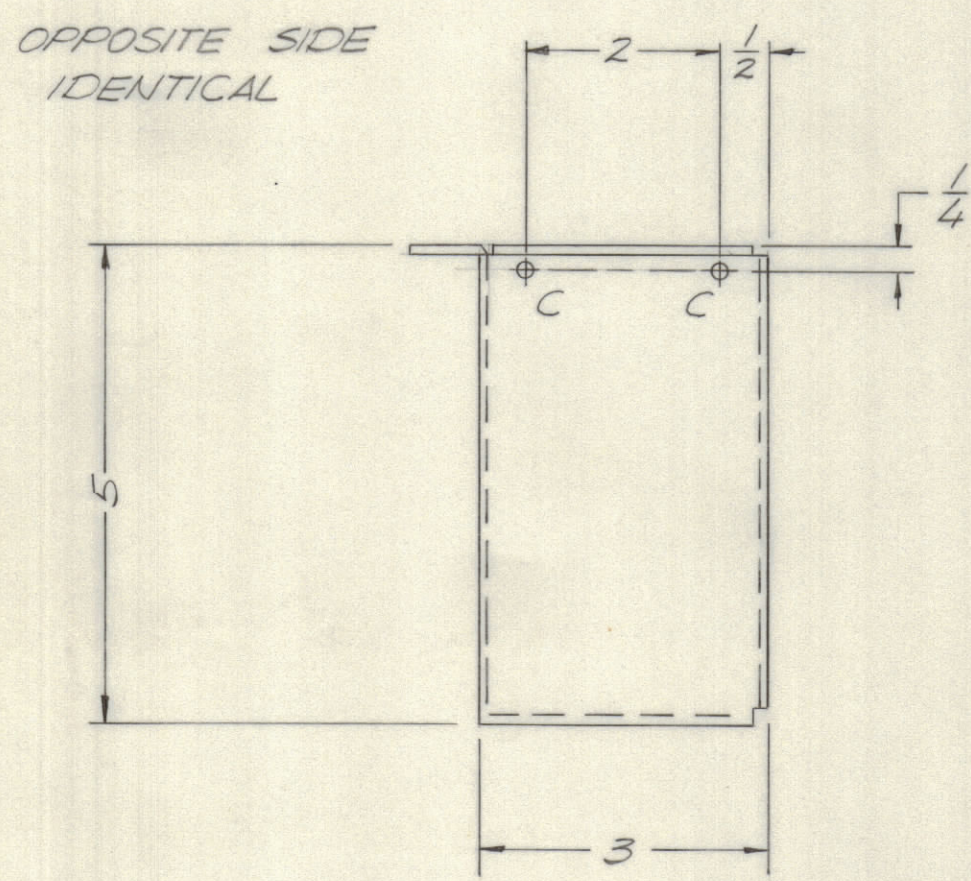
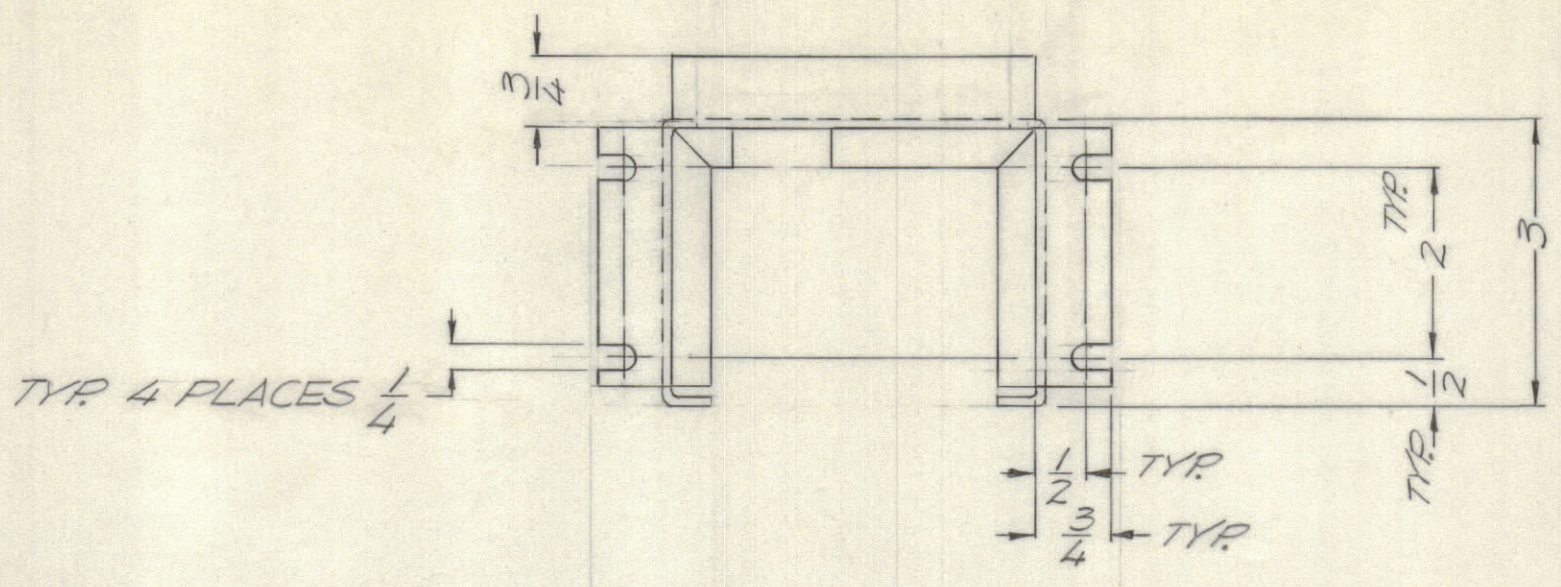
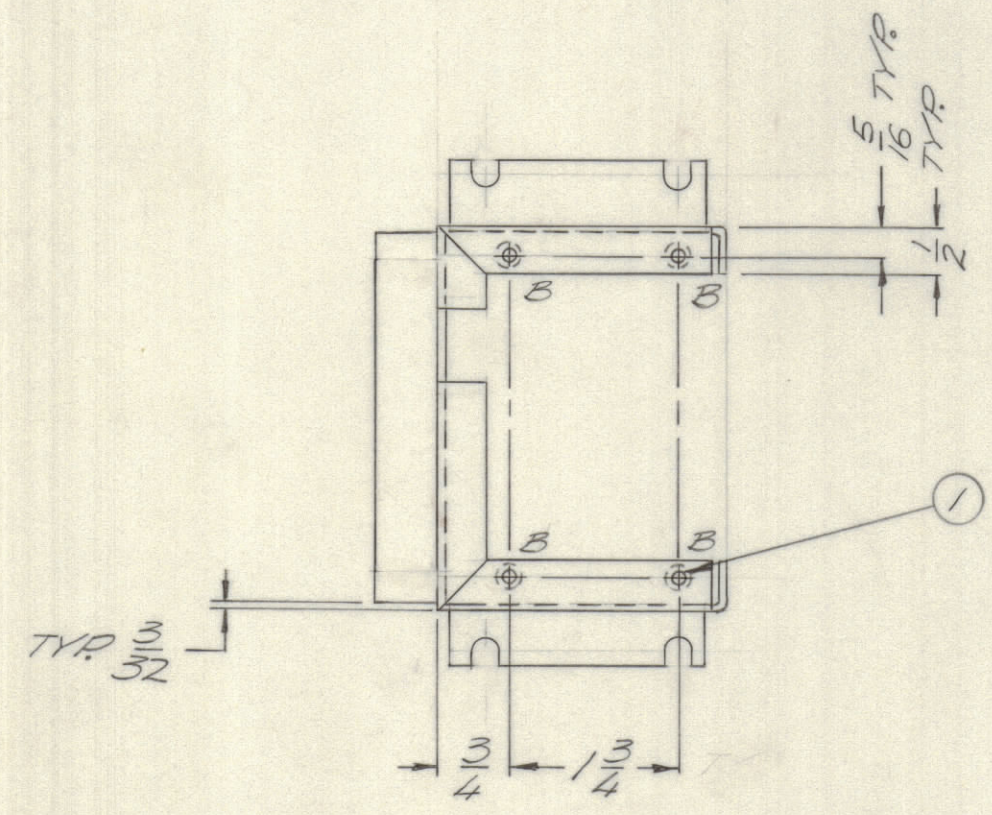


REVISIONS							
E.M.N.NO	DRAFT	CHKD	ZONE	LTR	DESCRIPTION	DATE	APPROVED
	GE			Ø	ORIGINAL RELEASE FOR PROD	2/3/70	PA



HOLE	DESCRIPTION	QTY.
A	.191-.194 DIA.	4
B	.221-.224 DIA.	4
C	3/16 DIA.	5



QTY. REQ.	ITEM	PART NO.	DESCRIPTION	SYMBOL
4	2	NT129 0632-4	NUT ROUND SPLINE	A
4	1	NT129 0832-4	NUT ROUND SPLINE	B

LIST OF MATERIAL						
FINAL APPROVAL		DATE	<b>THE TECHNICAL MATERIEL CORP.</b> MAMARONECK, NEW YORK  <i>CHASSIS, WRAPAROUND</i> <i>ROTARY SWITCH</i>			
MECH. DES.		DATE				
ELECT. DES.		DATE				
CHECKED		DATE				
DRAWN		DATE	SIZE	CODE IDENT NO.	DWG NO.	ISSUE
G. EVANGELIST		2/3/70	C	82679	MS 5518	Ø
MATERIAL		SCALE		SHEET		OF
.064 ALUM						
5052 H 32						
FINISH						
S404 VEL IRIDITE						

1	PALA 10 K	AS 145
QTY / UNIT	MODEL USED ON	ASS'Y NO.
APPLICATION		
CODE		
NOTICE TO PERSONS RECEIVING THIS DRAWING THE TECHNICAL MATERIEL CORPORATION claims proprietary right in the material disclosed hereon. This drawing is issued in confidence for engineering information only and may not be reproduced or used to manufacture anything shown hereon without permission from THE TECHNICAL MATERIEL CORPORATION to the user. This drawing is loaned for mutual assistance and is subject to recall at any time.		

UNLESS OTHERWISE SPECIFIED DIMENSIONS ARE IN INCHES AND INCLUDE CHEMICALLY APPLIED OR PLATED FINISHES

TOLERANCES ON  
DECIMALS      FRACTIONS  
.X ± .05      ± 1/64  
.XX ± .01      ANGLES  
.XXX ± .005      ± 0° -30°