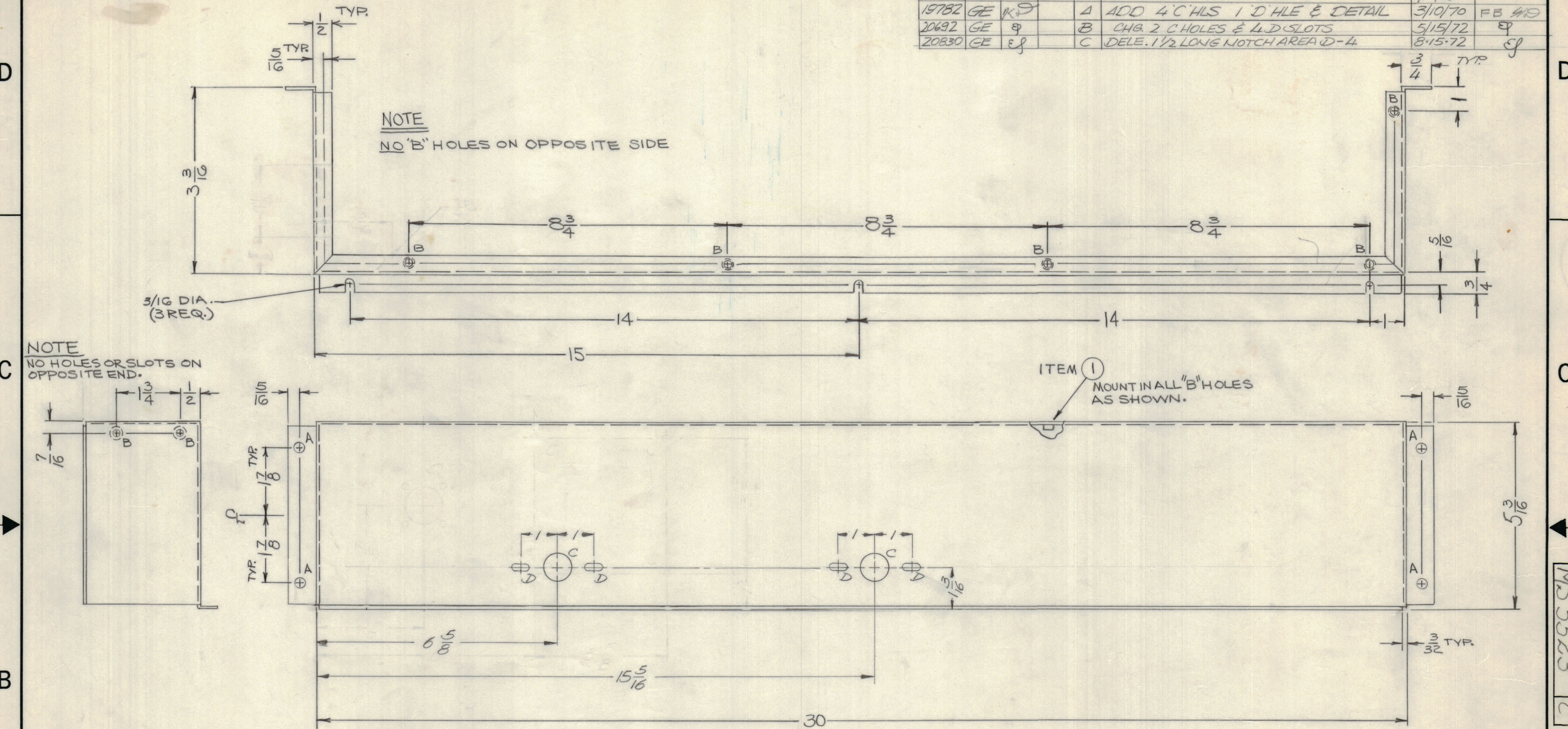


					REVISIONS		
E.M.N.NO	DRAFT	CHKD	ZONE	LTR	DESCRIPTION	DATE	APPROVED
					ORIGINAL RELEASE FOR PRODUCTION	1/26/70	
19782	GE	K.S.		A	ADD 4 'C' HLS 1 'D' HLE & DETAIL	3/10/70	FB 419
20692	GE	Φ		B	CHG. 2 'C' HOLES & 4 'D' SLOTS	5/15/72	Φ
20830	GE	EJ		C	DELE. 1/2 LONG NOTCH AREA D-4	8-15-72	EJ



HOLE	DESCRIPTION	REQ.
A	13/64 DIA.	4
B	.191-.194 DIA.	7
C	3/4 DIA.	2
D	11/64 X 1/2 SLOT	4

1	HFL ()-10K	AX5114
1	PALAIOK	AX5084
QTY / UNIT	MODEL USED ON	ASS'Y NO.
APPLICATION		
CODE		

NOTICE TO PERSONS RECEIVING THIS DRAWING
 THE TECHNICAL MATERIEL CORPORATION claims proprietary right in the material disclosed hereon. This drawing is issued in confidence for engineering information only and may not be reproduced or used to manufacture anything shown hereon without permission from THE TECHNICAL MATERIEL CORPORATION to the user. This drawing is loaned for mutual assistance and is subject to recall at any time.

UNLESS OTHERWISE SPECIFIED DIMENSIONS ARE IN INCHES AND INCLUDE CHEMICALLY APPLIED OR PLATED FINISHES

TOLERANCES ON
 DECIMALS .X ± .05
 .XX ± .01
 .XXX ± .005
 FRACTIONS ± 1/64
 ANGLES ± 0° -30'

MATERIAL .064 ALUM.
 5052-H32
 FINISH S404
 YEL. IRIDITE

7	1	NT129-0632-4	NUT, ROUND, SPLINE TYPE	B
QTY. REQ.	ITEM	PART NO.	DESCRIPTION	SYMBOL
F. BUDETTI LIST OF MATERIAL				
FINAL APPROVAL		DATE	THE TECHNICAL MATERIEL CORP. MAMARONECK, NEW YORK	
MECH. DES.		DATE	SHIELD, MAIN CONTROL PANEL	
ELECT. DES.		DATE		
CHECKED		DATE		
DRAWN		DATE	SIZE	CODE IDENT NO.
			C	82679
			MS5523	
			DWG NO.	ISSUE
				C
SCALE		SHEET		OF

MS 5523 C