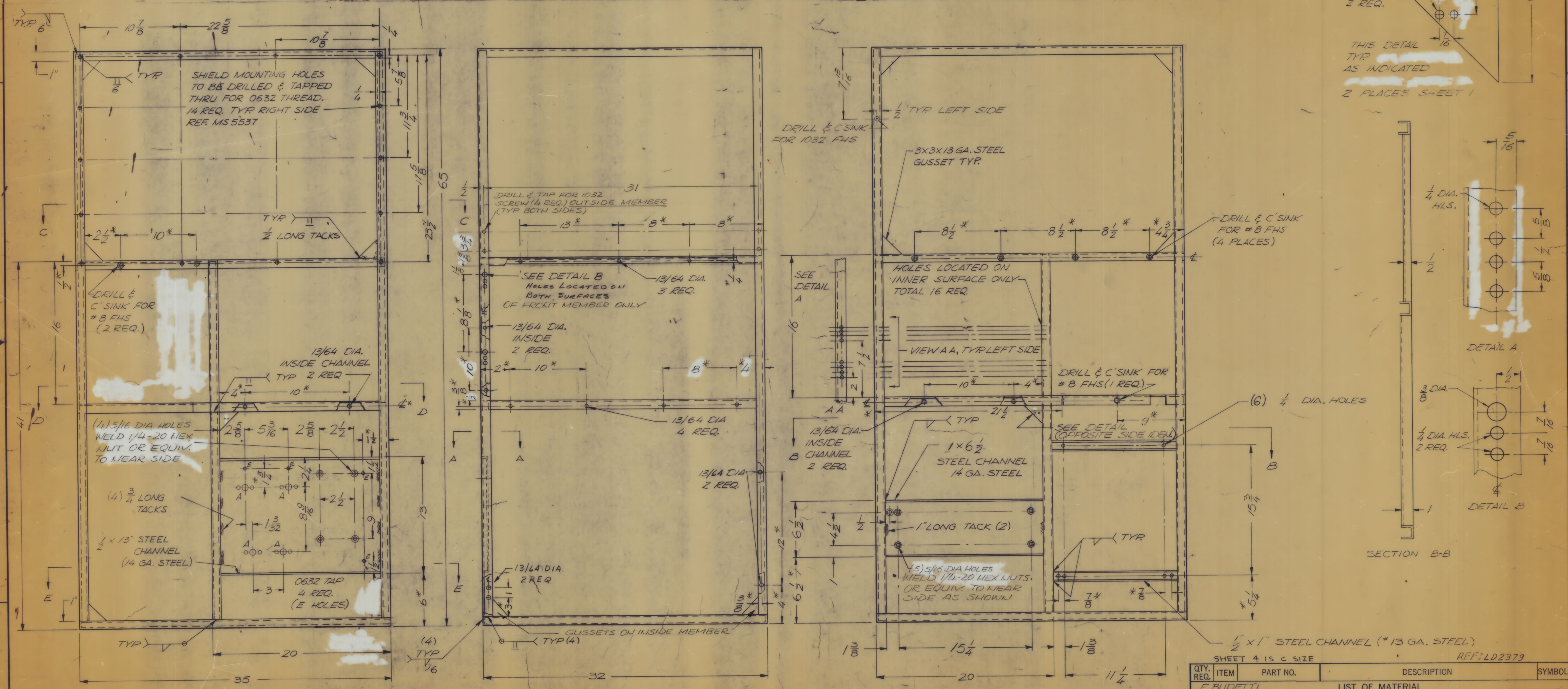


REVISIONS										REVISIONS									
ZONE	LTR	DESCRIPTION	DATE	E.M.N.O.	DRAFT	CHKD	APPD	E.M.N.O.	DRAFT	CHKD	ZONE	LTR	DESCRIPTION	DATE	APPROVED				
D		ADDITIONS DONE ACCORDING TO ENR 11-13-72	11-13-72	20948	GE			19751	GE	1/14	A		ORIGINAL RELEASE FOR PRODUCTION	12/24/70					
E		See SHEET 3	11-10-80	21831	APB			19064	GE		B		ADDED HOLES FOR CABLE CLAMPS	2/7/70	APB				
								20575	GE	AP	C		ADD 2 EA. 10-32 C'SNK HLS L&R SIDES	8/14/70	CD				
													1/4-20 WELD NUTS WERE PEM NUTS	11-11-72	SP				

NOTE: 1
 1. ALL CHANNELS ARE 1 X 13 GA. STEEL UNLESS OTHERWISE NOTED.
 2. TOP & BOTTOM IS 13 GA. STEEL.
 3. GRIND ALL EXTERNAL WELDS FLUSH.

NOTE: DIMENSIONS WITH ASTERISKS (*) ARE NON CRITICAL. TOLERANCE $\pm 1/16$



QTY. REQ.	ITEM	PART NO.	DESCRIPTION	SYMBOL
F. BUDETTI				
LIST OF MATERIAL				
FINAL APPROVAL		DATE	THE TECHNICAL MATERIEL CORP.	
MECH. DES.		DATE	MAMARONECK, NEW YORK	
ELECT. DES.		DATE	FRAME, 10K TECK.	
CHECKED		DATE	SIZE CODE IDENT NO. DWG NO.	
DRAWN		DATE	D 82679 MS 5530	
MATERIAL 13GA CES EXCEPT AS NOTED		FINISH COPPER FLASH & CLEAR IRIDITE		
TOLERANCES ON DECIMALS .X \pm .05 .XX \pm .01 .XXX \pm .005		FRACTIONS \pm 1/64 ANGLES \pm 0°-30'		
UNLESS OTHERWISE SPECIFIED DIMENSIONS ARE IN INCHES AND INCLUDE CHEMICALLY APPLIED OR PLATED FINISHES		SCALE		

QTY / UNIT	MODEL USED ON	ASS'Y NO.
	HFL (-) 10K REVA	AX5163
	PALA-10K	AX5085
APPLICATION		
CODE		

NOTICE TO PERSONS RECEIVING THIS DRAWING
 THE TECHNICAL MATERIEL CORPORATION claims proprietary right in the material disclosed hereon. This drawing is issued in confidence for engineering information only and may not be reproduced or used to manufacture anything shown hereon without permission from THE TECHNICAL MATERIEL CORPORATION to the user. This drawing is loaned for mutual assistance and is subject to recall at any time.