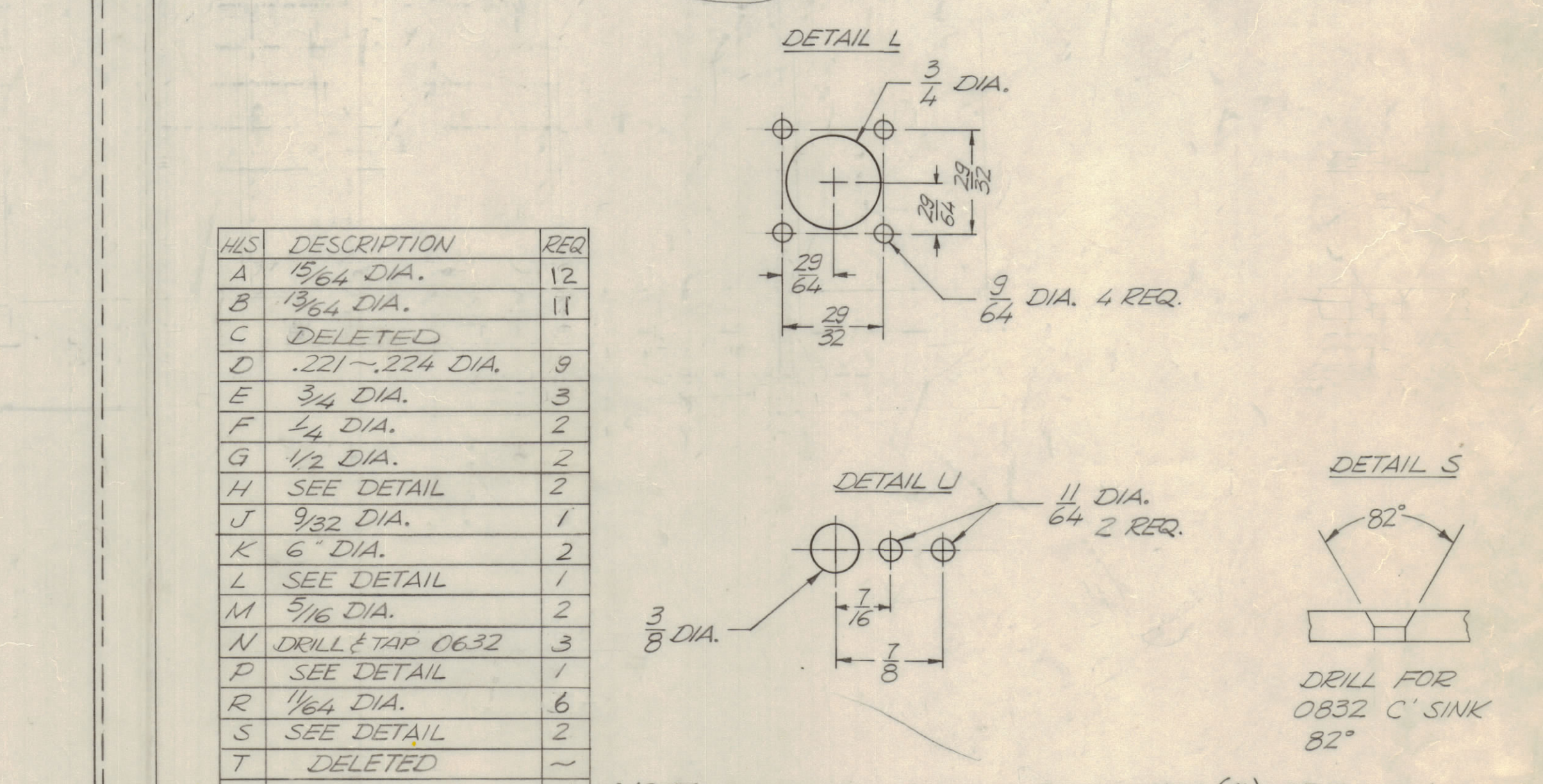
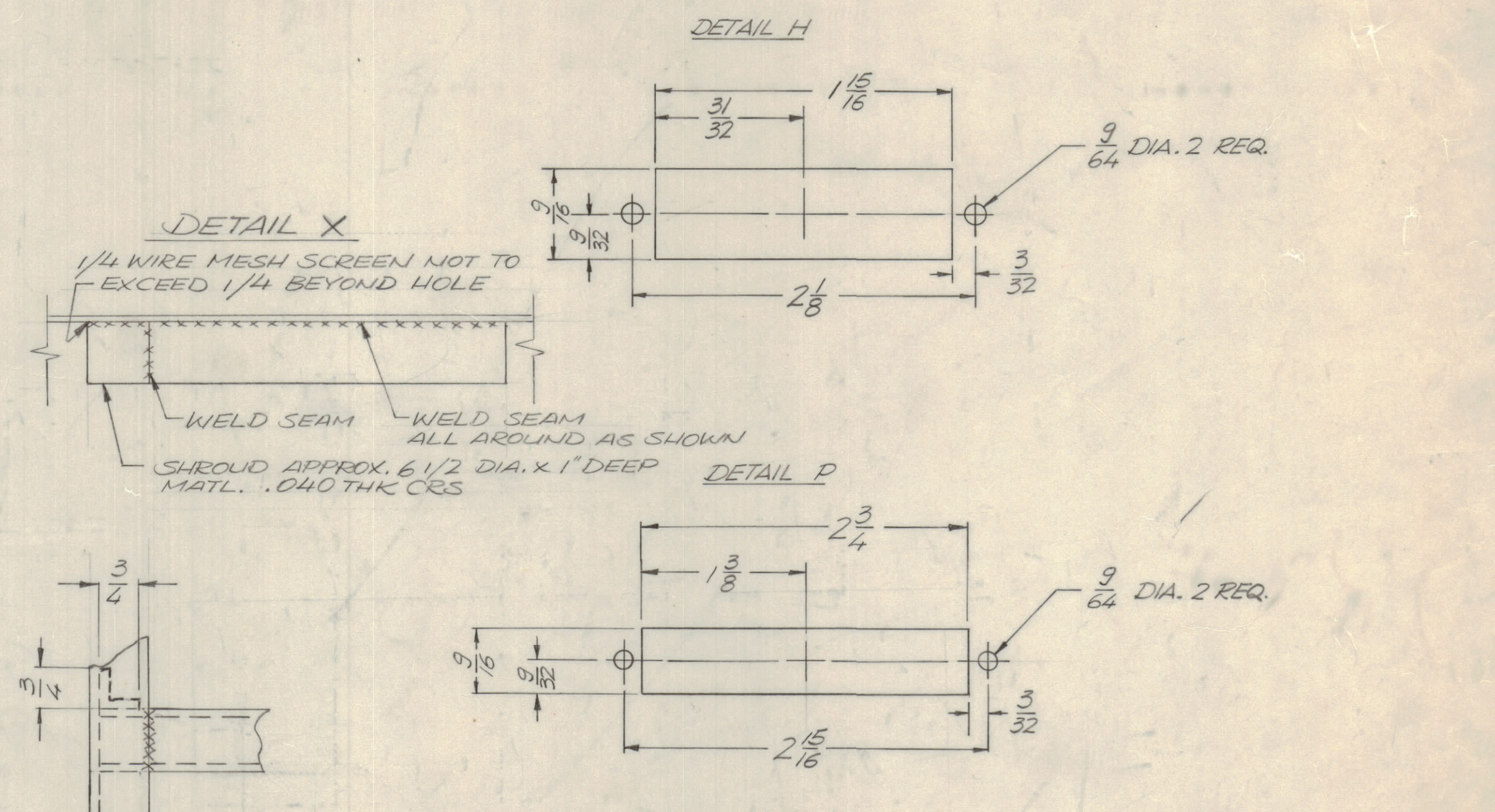
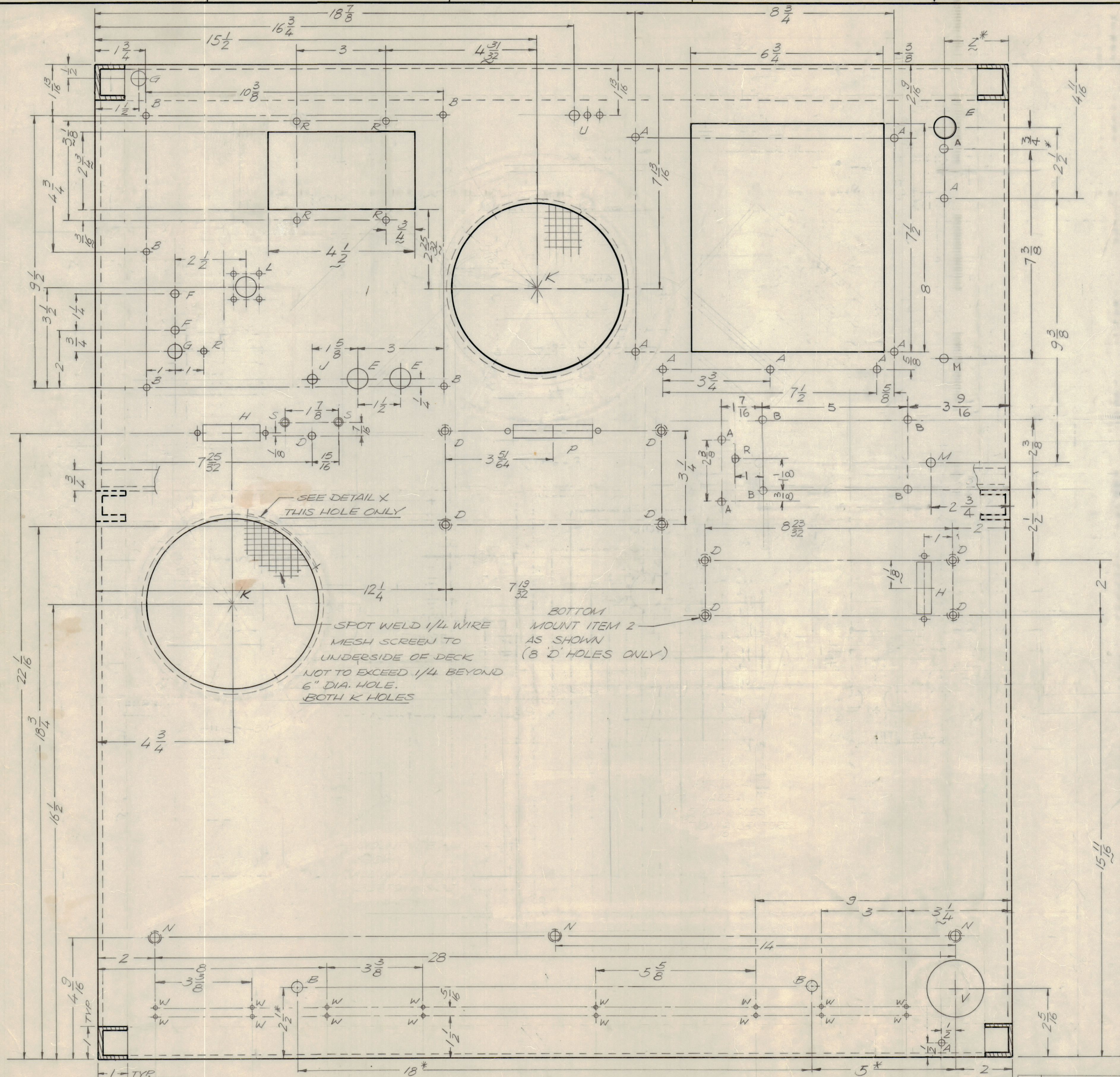


REVISIONS							
E.M.N.O	DRAFT	CHKD	ZONE	LTR	DESCRIPTION	DATE	APPROVED
	GE	WVC			ORIGINAL RELEASE FOR PRODUCTION	11-18-69	
19751	GE	WVC	A	A	ADDED 2 B HOLES / A HOLE 1/16 HOLE	2/5/70	WVC
19964	GE	WVC	AB	B	DIM. 4 5/16 CHG TO 4 9/16	9/14/70	WVC
20575	GE	WVC	C	C	ADDED 1 K HOLE FOR TOTAL OF 2	4-13-72	WVC
20949	GE	WVC	D	D	ADD ASTERISKS NOTE SEE E.M.N.	11/13/72	WVC
21931	G.D.L.		E	F	ADD THREE "B" HOLES, 4 "B" HOLES, ONE "M" HOLE & ONE "R" HOLE - DELETE ONE "M" HOLE	11-10-80	



HLS	DESCRIPTION	REQ
A	15/64 DIA.	12
B	13/64 DIA.	11
C	DELETED	
D	.221-.224 DIA.	9
E	3/4 DIA.	3
F	1/4 DIA.	2
G	1/2 DIA.	2
H	SEE DETAIL	2
J	9/32 DIA.	1
K	6\"/>	

NOTE: DIMENSIONS WITH ASTERISKS (*) ARE NON CRITICAL. TOLERANCE ± 1/16

QTY. REQ.	ITEM	PART NO.	DESCRIPTION	SYMBOL
8	2	0832-6	WELD NUT	D
1			DELETED	

F. BUDETTI LIST OF MATERIAL			
FINAL APPROVAL	DATE	THE TECHNICAL MATERIEL CORP.	
MECH. DES.	DATE	MAMARONECK, NEW YORK	
ELECT. DES.	DATE	P.A. DECK	
CHECKED	DATE	FRAME 10K TECK.	
DRAWN	DATE	SIZE	CODE IDENT NO. DWG NO.
G. EVANGELIS	11-19-69	D	82679 MS5530
MATERIAL 13 GA CRS EXCEPT AS NOTED		SCALE	SHEET 3 OF 7
FINISH COPPER FLASH & CLEAR IRIDITE		1/2	

QTY / UNIT	MODEL USED ON	ASSY NO.
	LIFL(-)10K REV A	AX 5163
	PALA-10K	AX 5085
APPLICATION		
CODE		

NOTICE TO PERSONS RECEIVING THIS DRAWING
 THE TECHNICAL MATERIEL CORPORATION claims proprietary right in the material disclosed herein. This drawing is issued in confidence for engineering information only and may not be reproduced or used to manufacture anything shown hereon without permission from THE TECHNICAL MATERIEL CORPORATION to the user. This drawing is loaned for mutual assistance and is subject to recall at any time.