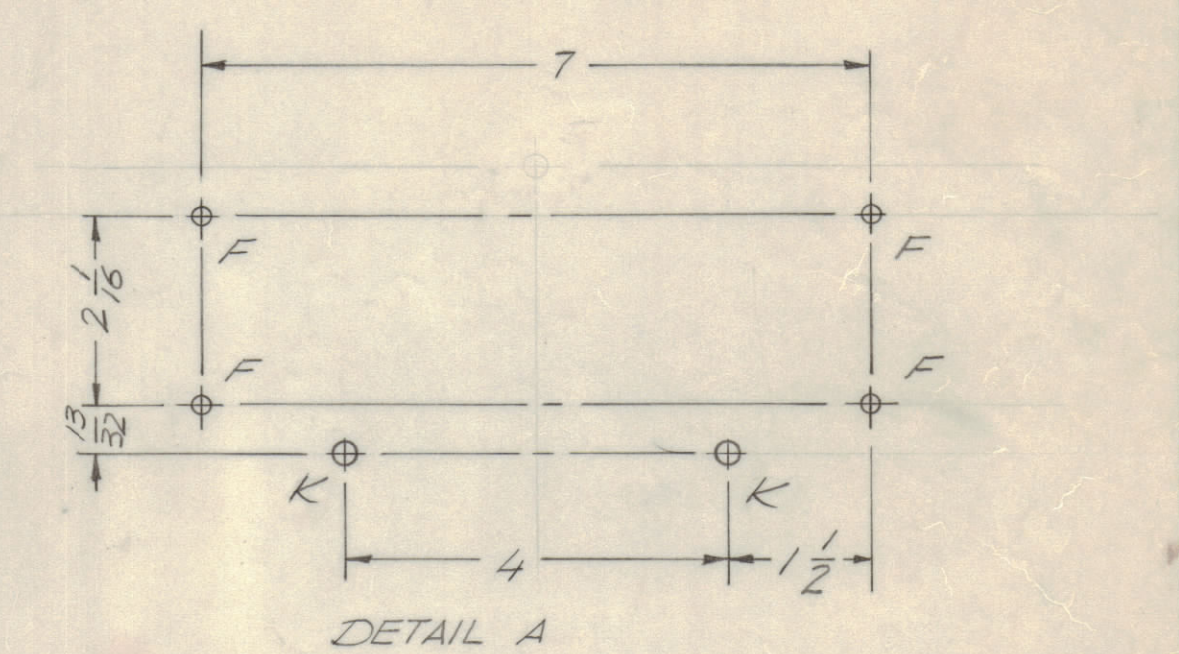
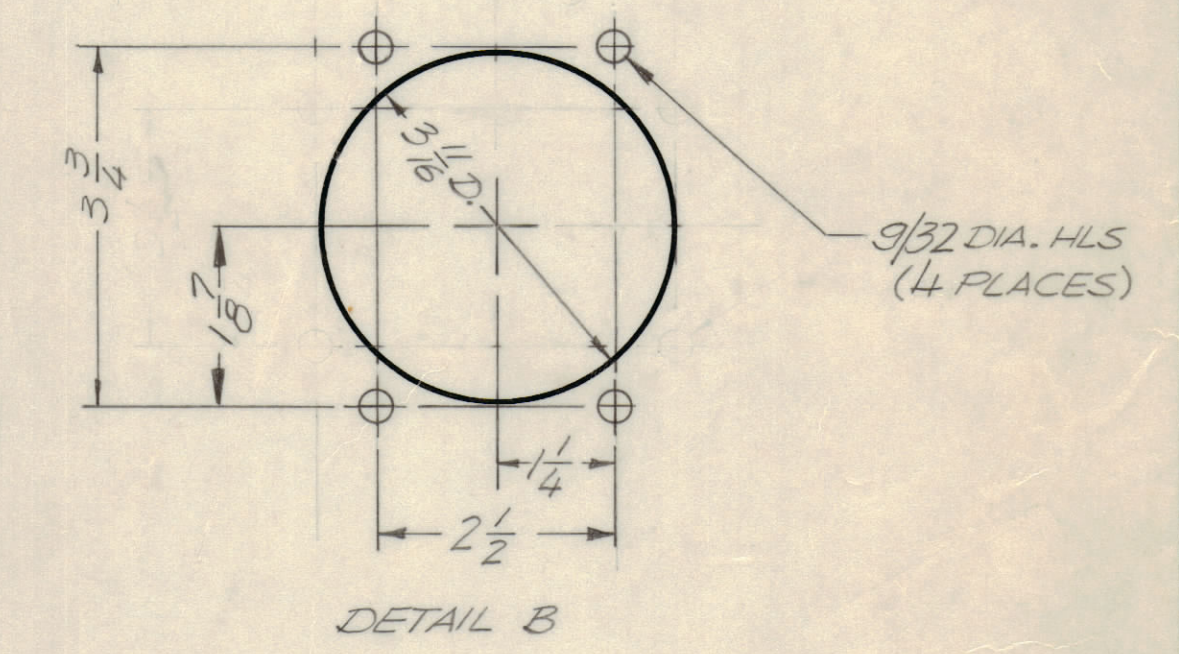
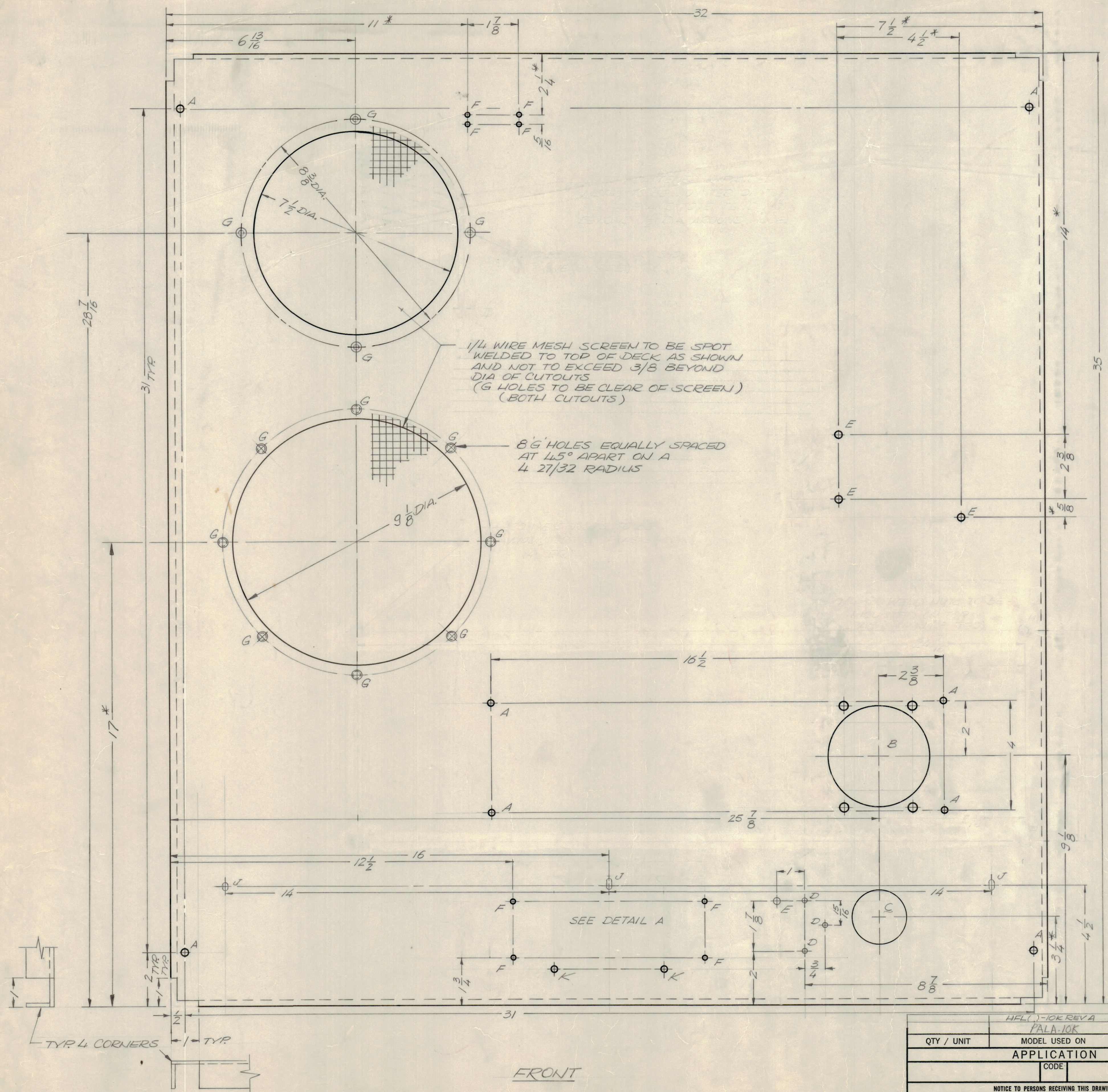


REVISIONS							
E.M.N.NO	DRAFT	CHKD	ZONE	LTR	DESCRIPTION	DATE	APPROVED
	GE	W		P	ORIGINAL RELEASE FOR PRODUCTION	12-9-69	
19751	GE	W		A	ADDED ONE E HOLE	1-4-70	W
19964	GE	W		B	CHG. DIM. FROM 4 3/8 TO 4 1/2 ADD J&K HLS	8/14/70	W
20575	GE	W		C	ADDED 9/16 DIA. HOLE BELOW 7 1/2 HLE	4-13-72	W
20949	GE	W		D	ADDED ASTERISKS NOTE (SEE E.M.N.)	11-13-72	W
24831	W			E	SEE SHEET 3	11-10-80	W

HOLE	DESCRIPTION	REQ
A	DRILL & TAP FOR 10-32 THD.	8
B	SEE DETAIL B	1
C	1" DIA.	1
D	3/16 DIA.	3
E	9/64 DIA.	4
F	DRILL & TAP FOR 6-32 THD.	8
G	DRILL & TAP FOR 8-32 THD.	12
H	DELETED	
J	11/64 X 11/32 SLOT	3
K	9/64 DIA.	2



NOTE: DIMENSIONS WITH ASTERISKS (*) ARE NON CRITICAL. TOLERANCE ± 1/16



QTY. REQ.	ITEM	PART NO.	DESCRIPTION	SYMBOL
E. BUDETTI LIST OF MATERIAL				
FINAL APPROVAL		DATE	THE TECHNICAL MATERIEL CORP. MAMARONECK, NEW YORK	
MECH. DES.		DATE		
ELECT. DES.		DATE		
CHECKED		DATE		
DRAWN		DATE	FRAME 10K TOP	
TOLERANCES ON				
DECIMALS		FRACTIONS		
.X ± .05		± 1/64		
.XX ± .01		ANGLES		
.XXX ± .005		± 0° - 30'		
MATERIAL 13 GA CRS		SIZE CODE IDENT NO. DWG NO.		
EXCEPT AS NOTED		D 82679 MS 5530		
FINISH COPPER FLASH & CLEAR IRIDITE		ISSUE		
		E		
SCALE 1/2		SHEET 5 OF 7		

QTY / UNIT	MODEL USED ON	ASS'Y NO.
	HFLC-10K REVA PALA-10K	AX 5163 A15085
APPLICATION		
CODE		

NOTICE TO PERSONS RECEIVING THIS DRAWING
 THE TECHNICAL MATERIEL CORPORATION claims proprietary right in the material disclosed herein. This drawing is issued in confidence for engineering information only and may not be reproduced or used to manufacture anything shown herein without permission from THE TECHNICAL MATERIEL CORPORATION to the user. This drawing is loaned for mutual assistance and is subject to recall at any time.