

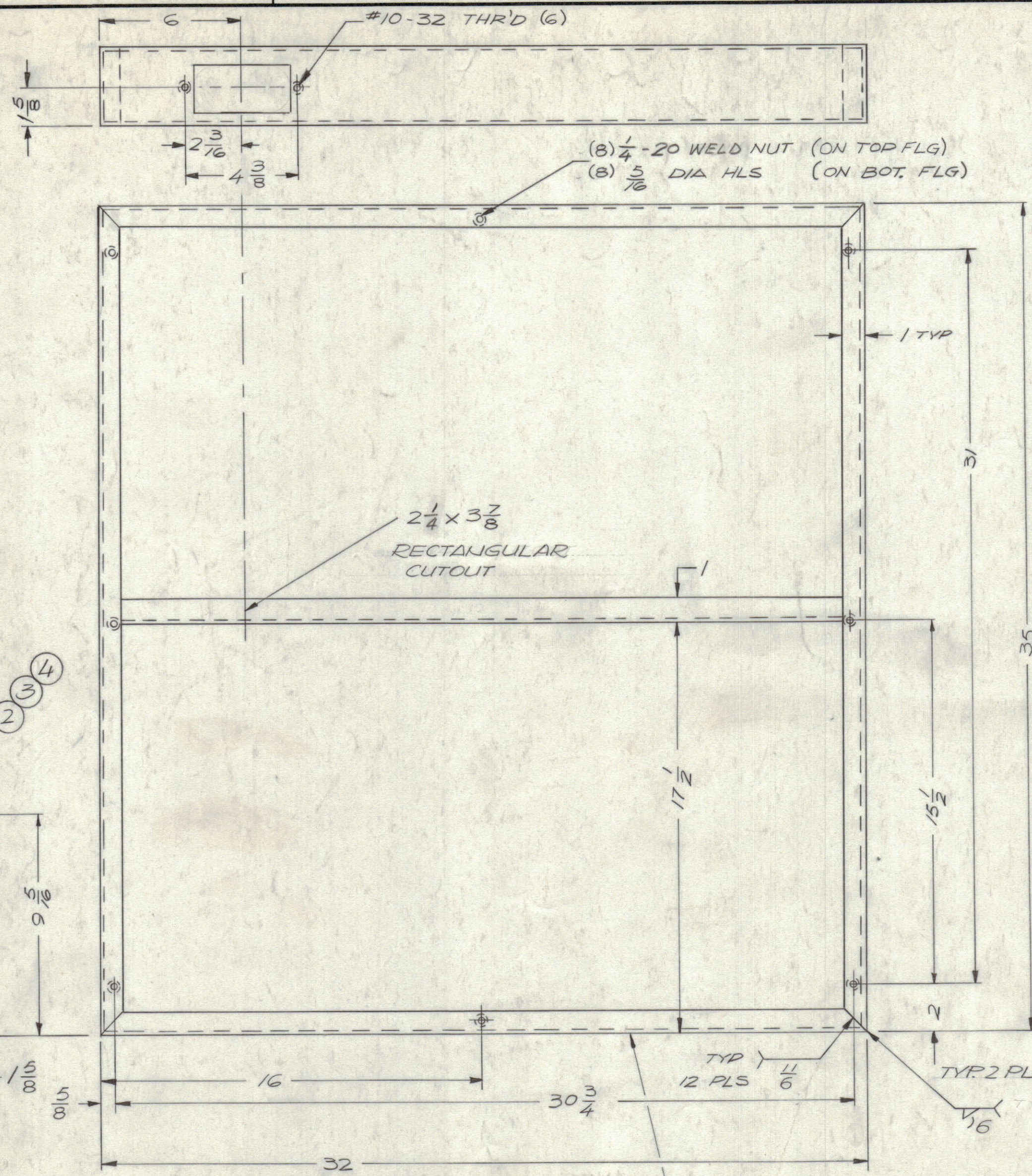
4

3

2

1

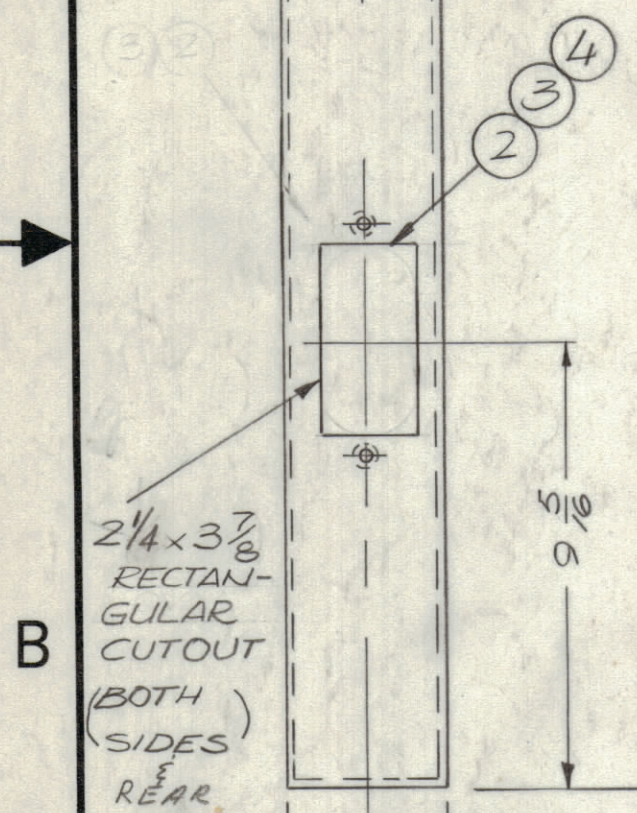
REVISIONS						
ZONE	LTR	DESCRIPTION	DATE	E.M.N.NO	DRAFT	CHKD APPD
		ORIGINAL RELEASE FOR PRODUCTION	12/24/69		GE	GE
A		CHG OVAL CUTOUT TO RECTANGULAR	11/14/70	20948	GE	GE



FINISH NOTES

1. S371-DEGREASE
2. COPPER FLASH
3. S114-ZINC CHROMATE PRIMER
4. S788 BLACK TEXTURE VINYL OR PRIME AND PAINT PER CUSTOMERS SPECIFICATIONS

NOTE: DO NOT PAINT TOP & BOTTOM EDGES.



QTY. REQ.	ITEM	PART NO.	DESCRIPTION	SYMBOL
6	4	LW110MRN	WASHER STAR INTERNAL	
6	3	SCBP1032BNB	SCREW, MACHINE, PAN HEAD	
3	2	-	COVER PLATE	
1	1	-	BASE	

LIST OF MATERIAL

FINAL APPROVAL	DATE
<i>DOB</i>	1/4/70
MECH. DES.	DATE
<i>ALP.</i>	12/24/69
ELECT. DES.	DATE
CHECKED	DATE
DRAWN	DATE
<i>G EVANGELIST</i>	4/24/69

THE TECHNICAL MATERIEL CORP.  
MAMARONECK, NEW YORK

BASE

1	HFL()-10KREVA	AX5091-1
	PALA 10K	AX5091
QTY / UNIT	MODEL USED ON	ASS'Y NO.
	APPLICATION	
	CODE	

UNLESS OTHERWISE SPECIFIED DIMENSIONS ARE IN INCHES AND INCLUDE CHEMICALLY APPLIED OR PLATED FINISHES	
TOLERANCES ON	
DECIMALS	FRACTIONS
.X ± .05	± 1/64
.XX ± .01	ANGLES
.XXX ± .005	± 0° -30'

MATERIAL	#13 GA. STEEL
FINISH	SEE NOTE

SIZE	CODE IDENT.NO.	DWG NO.	ISSUE
C	82679	MS 5533	A
SCALE		SHEET	OF

NOTICE TO PERSONS RECEIVING THIS DRAWING  
THE TECHNICAL MATERIEL CORPORATION claims proprietary right in the material disclosed hereon. This drawing is issued in confidence for engineering information only and may not be reproduced or used to manufacture anything shown hereon without permission from THE TECHNICAL MATERIEL CORPORATION to the user. This drawing is loaned for mutual assistance and is subject to recall at any time.

4

3

2

1