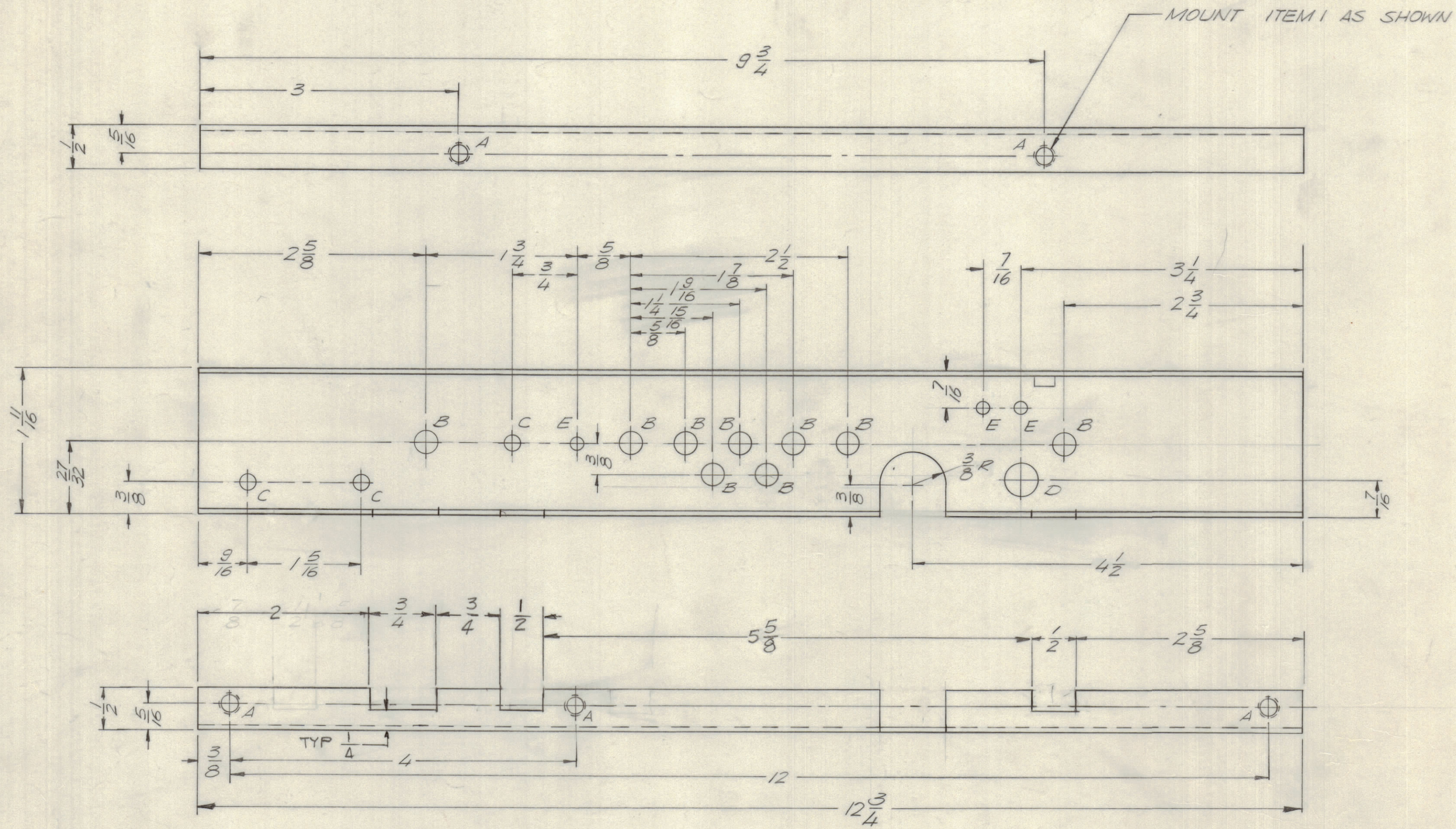


REVISIONS							
E.M.N.NO	DRAFT	CHKD	ZONE	LTR	DESCRIPTION	DATE	APPROVED
	GE				REDRAWN	1-23-70	
	(1)				ORIGINAL RELEASE FOR PRODUCTION	4/26/70	
20709	GE	EP		A	ADDED OVERALL DIM OF 12 ³ / ₄	6-2-72	EP
20894	GE	EP		B	ADD 2'E HOLES	10/3/72	EP
21654	GDL	WFB		C	NOTCH 1/2 X 1/4 & 1/4 DIM'S ADDED	6-16-78	WFB



HOLE	DESCRIPTION	REQ
A	.191 ~ .194 DIA.	5
B	1/4 DIA.	9
C	11/64 DIA.	3
D	3/8 DIA.	1
E	9/64 DIA.	3

1	HFL (-) 10KREVA	AX5167
1	PALA 10 K	AX 5080
QTY / UNIT	MODEL USED ON	ASS'Y NO.
APPLICATION		
CODE		

NOTICE TO PERSONS RECEIVING THIS DRAWING
 THE TECHNICAL MATERIEL CORPORATION claims proprietary right in the material disclosed herein. This drawing is issued in confidence for engineering information only and may not be reproduced or used to manufacture anything shown hereon without permission from THE TECHNICAL MATERIEL CORPORATION to the user. This drawing is loaned for mutual assistance and is subject to recall at any time.

REF. LD 2400

UNLESS OTHERWISE SPECIFIED DIMENSIONS ARE IN INCHES AND INCLUDE CHEMICALLY APPLIED OR PLATED FINISHES

TOLERANCES ON
 DECIMALS .X ± .05
 .XX ± .01
 .XXX ± .005
 FRACTIONS ± 1/64
 ANGLES ± 0° -30'

MATERIAL .064 ALUM 5052 H32
 FINISH S 404 YEL. IRIDITE

QTY. REQ.	ITEM	PART NO.	DESCRIPTION	SYMBOL
4	1	NT 129 0632-4	NUT PLN SPLINE	A

F. BUDETTI LIST OF MATERIAL

FINAL APPROVAL *[Signature]* DATE 1-70
 MECH. DES. ALP. DATE 1-70
 ELECT. DES. HGC DATE 1-70
 CHECKED DATE
 DRAWN EVANGELIST DATE 1-23-70

THE TECHNICAL MATERIEL CORP.
 MAMARONECK, NEW YORK

BRACKET, FEED, THRU

SIZE	CODE IDENT NO.	DWG NO.	ISSUE
C	82679	MS5551	C

SCALE 1:1 SHEET OF