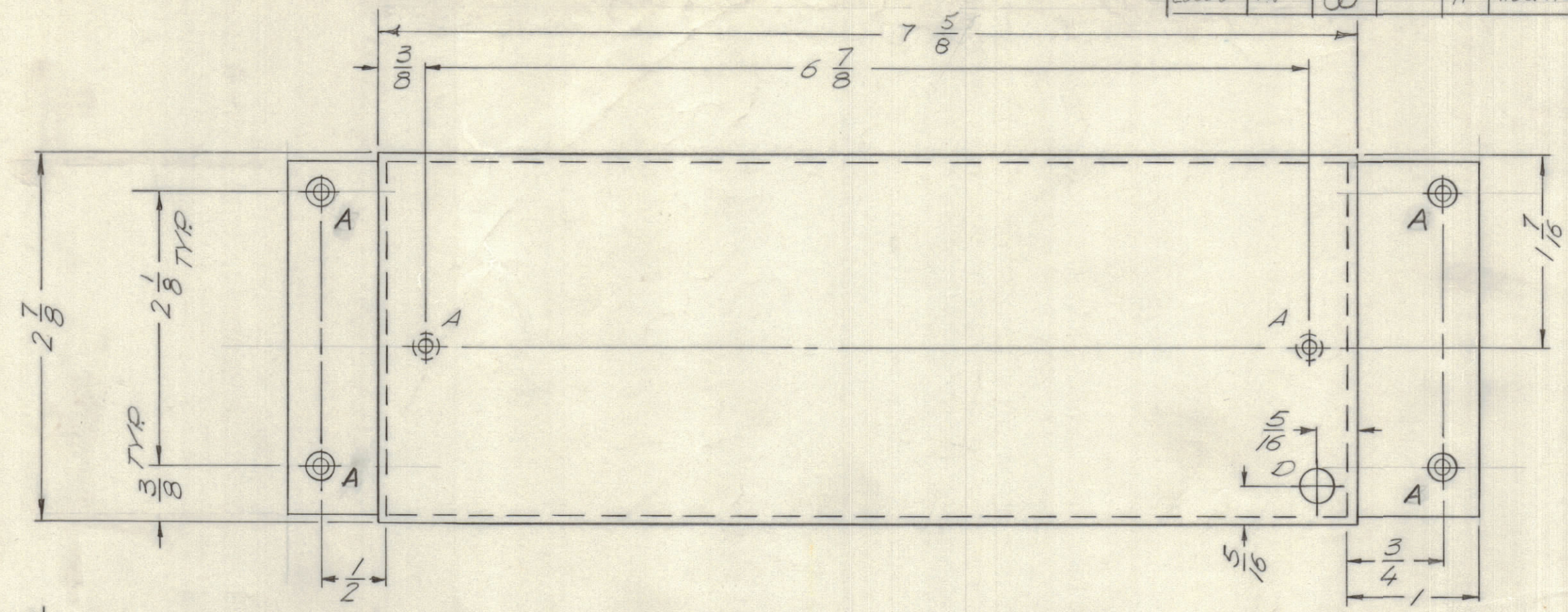
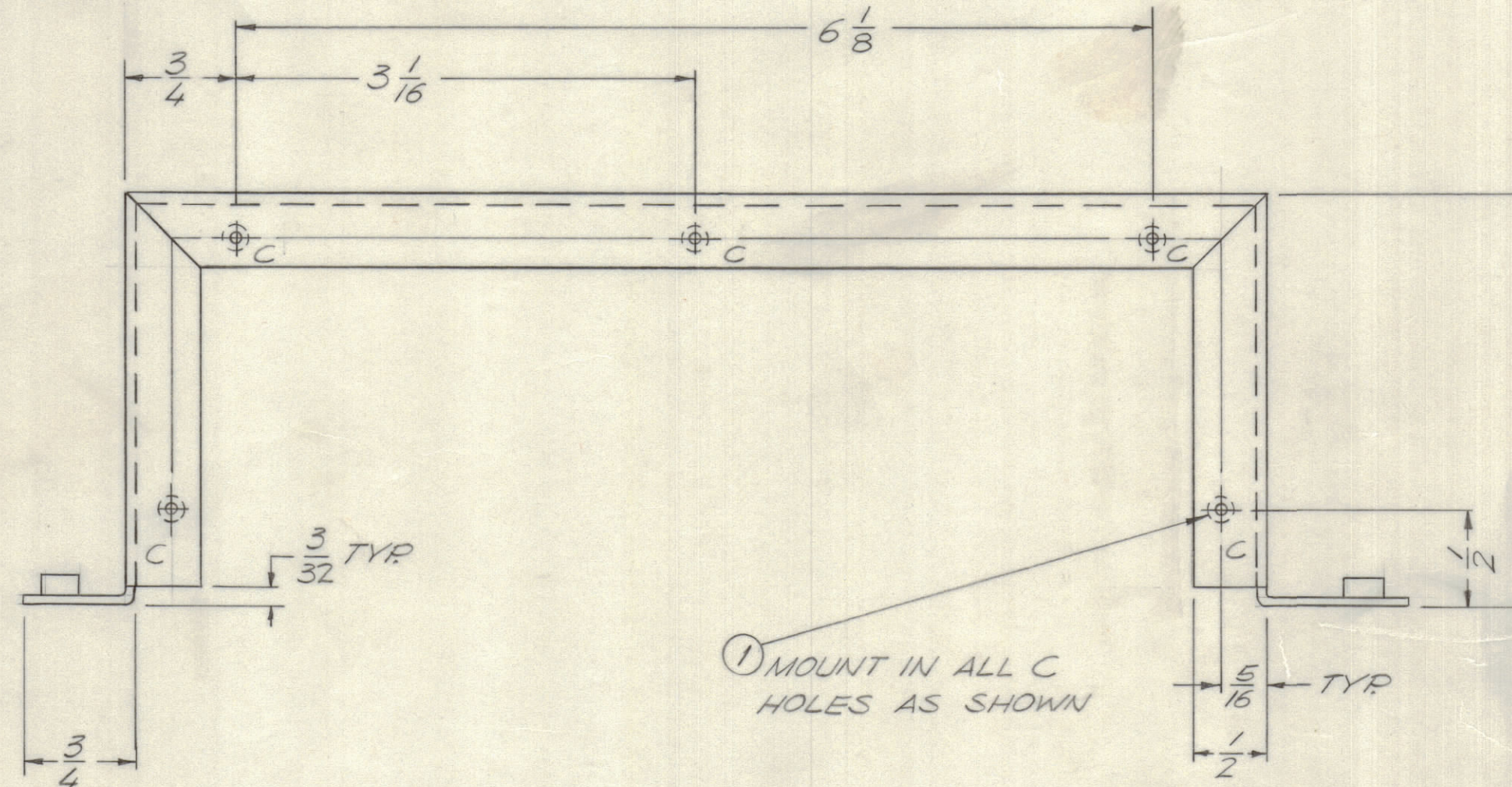
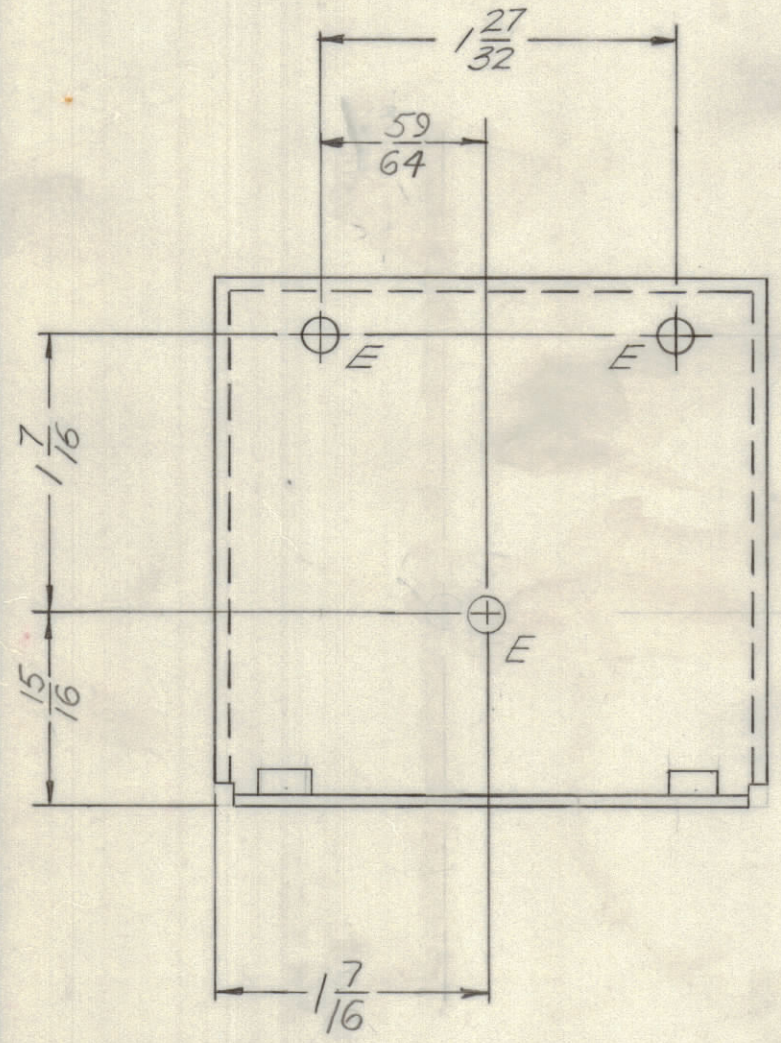


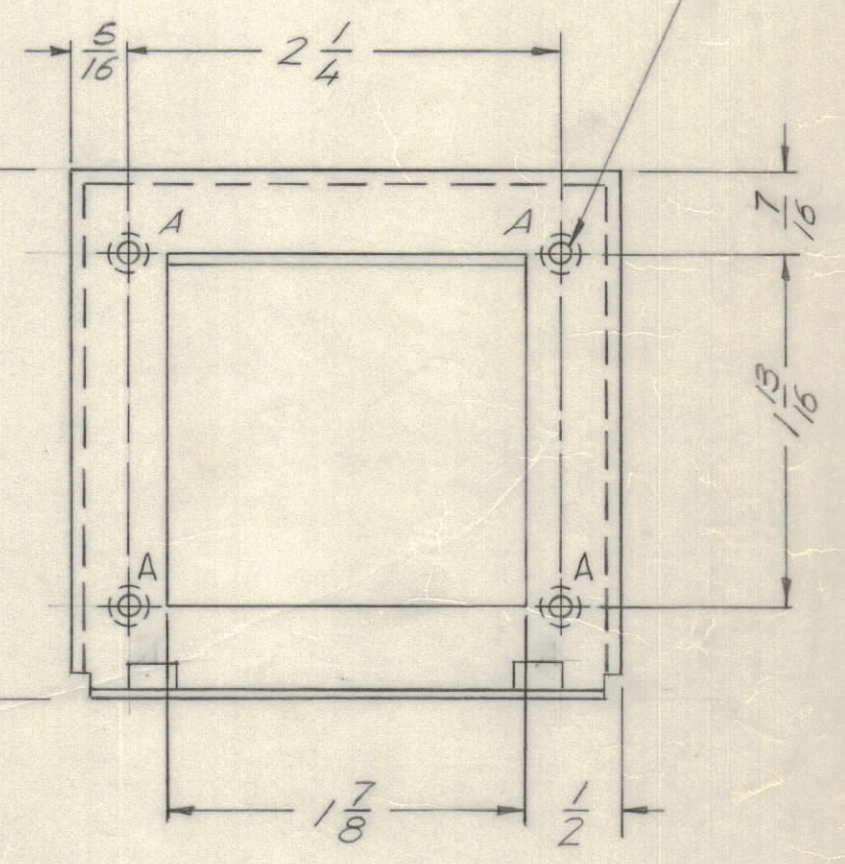
REVISIONS							
E.M.N.NO	DRAFT	CHKD	ZONE	LTR	DESCRIPTION	DATE	APPROVED
	GE			X	EXP RELEASE	12/16/69	
	U			X	ORIGINAL RELEASE FOR PRODUCTION	1/26/70	
2.0388	RT	W		A	ADD. REF & APPLICATION, CHG. TITLE	6-15-71	P.C.D.



MOUNT IN ALL A HOLES AS SHOWN ②



① MOUNT IN ALL C HOLES AS SHOWN



H/L	DESCRIPTION	REQ
A	.191~.194 DIA.	10
B	DELETED	
C	.161~.164 DIA.	10
D	1/4 DIA.	1
E	1/16 DIA.	3

QTY / UNIT	MODEL USED ON	ASS'Y NO.
1	TLAA-1K	AX5133
1	PALA 10K	AX5080

APPLICATION  
CODE  
NOTICE TO PERSONS RECEIVING THIS DRAWING  
THE TECHNICAL MATERIEL CORPORATION claims proprietary right in the material disclosed hereon. This drawing is issued in confidence for engineering information only and may not be reproduced or used to manufacture anything shown hereon without permission from THE TECHNICAL MATERIEL CORPORATION to the user. This drawing is loaned for mutual assistance and is subject to recall at any time.

REF. LD 2475  
REF. LD 2371

UNLESS OTHERWISE SPECIFIED DIMENSIONS ARE IN INCHES AND INCLUDE CHEMICALLY APPLIED OR PLATED FINISHES

TOLERANCES ON  
DECIMALS .X ± .05  
.XX ± .01  
.XXX ± .005  
FRACTIONS ± 1/64  
ANGLES ± 0° -30'

MATERIAL .064 ALUM  
5052 H 32  
FINISH S404  
YEL. IRIDITE

QTY. REQ.	ITEM	PART NO.	DESCRIPTION	SYMBOL
10	2	NT129-0632-4	NUT PLN SPLINE	A
10	1	NT129-0440-4	NUT PLN SPLINE	C

F. BUDETTI LIST OF MATERIAL

FINAL APPROVAL	DATE
MECH. DES.	DATE
ELECT. DES.	DATE
CHECKED	DATE
DRAWN	DATE

THE TECHNICAL MATERIEL CORP.  
MAMARONECK, NEW YORK

CHASSIS, MTG, CAP

SIZE	CODE IDENT NO.	DWG NO.	ISSUE
C	82679	MS 5555	A
SCALE 1:1	SHEET		OF