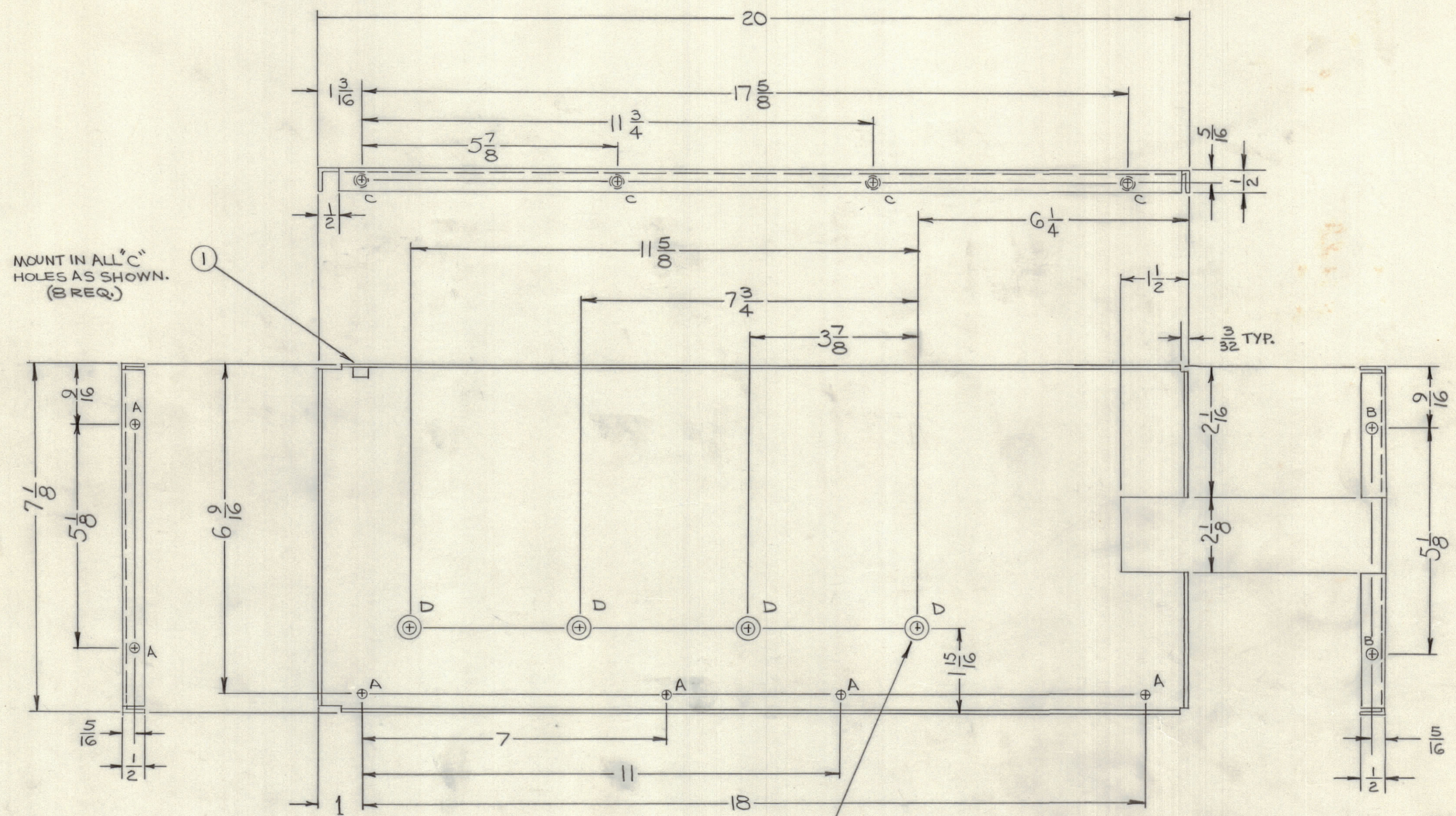


REVISIONS					DATE	APPROVED
E.M.N.NO	DRAFT	CHKD	ZONE	LTR	DESCRIPTION	
	0			Ø	ORIGINAL RELEASE FOR PRODUCTION	1/30/70

OPPOSITE SIDE IS IDENTICAL



MOUNT IN ALL "C" HOLES AS SHOWN. (8 REQ.)

MOUNT IN ALL "D" HOLES AS SHOWN (4 REQ.)

HOLE	DESCRIPTION	REQ.
A	13/64 DIA.	6
B	15/64 DIA.	2
C	.191-.194 DIA.	8
D	.250-.254 DIA.	4

QTY. REQ.	ITEM	PART NO.	DESCRIPTION	SYMBOL
4	2	NT129-1032-4	NUT, ROUND, SPLINE TYPE	D
8	1	NT129-0632-4	NUT, ROUND, SPLINE TYPE	C

F. BUDETTI LIST OF MATERIAL				
FINAL APPROVAL		DATE	THE TECHNICAL MATERIEL CORP. MAMARONECK, NEW YORK PLATE, SIDE, RIGHT (DRIVER)	
MECH. DES.		DATE		
ELECT. DES.		DATE		
CHECKED		DATE		
DRAWN		DATE	SCALE CODE IDENT NO. DWG NO. ISSUE C 82679 MS5561 Ø	
MATERIAL .081 ALUM. 5052 H32		SHEET OF		
FINISH S404 YEL. IRIDITE				

QTY / UNIT	MODEL USED ON	ASS'Y NO.
1	PALAIOK	AX5080
APPLICATION		
CODE		
NOTICE TO PERSONS RECEIVING THIS DRAWING THE TECHNICAL MATERIEL CORPORATION claims proprietary right in the material disclosed hereon. This drawing is issued in confidence for engineering information only and may not be reproduced or used to manufacture anything shown hereon without permission from THE TECHNICAL MATERIEL CORPORATION to the user. This drawing is loaned for mutual assistance and is subject to recall at any time.		