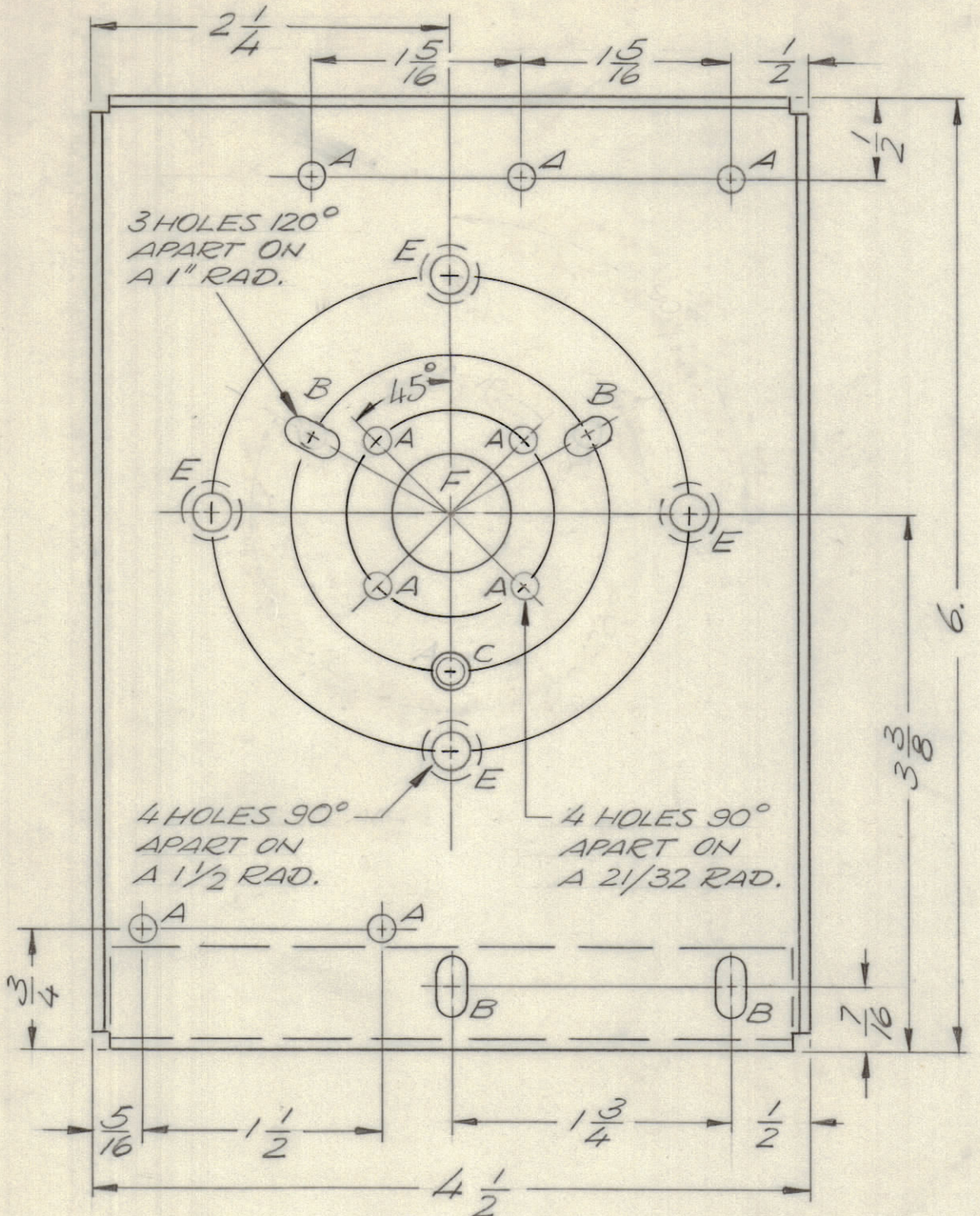
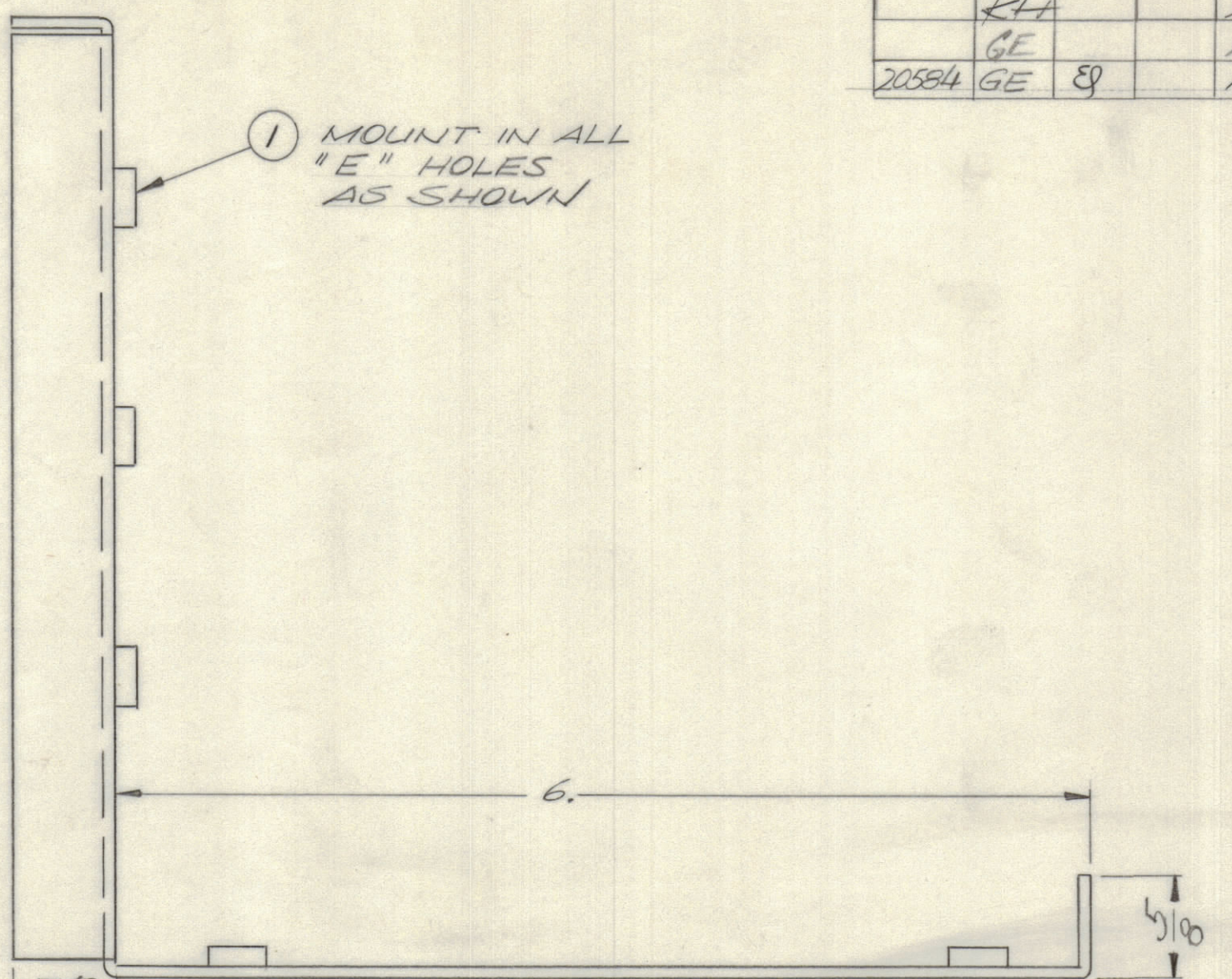


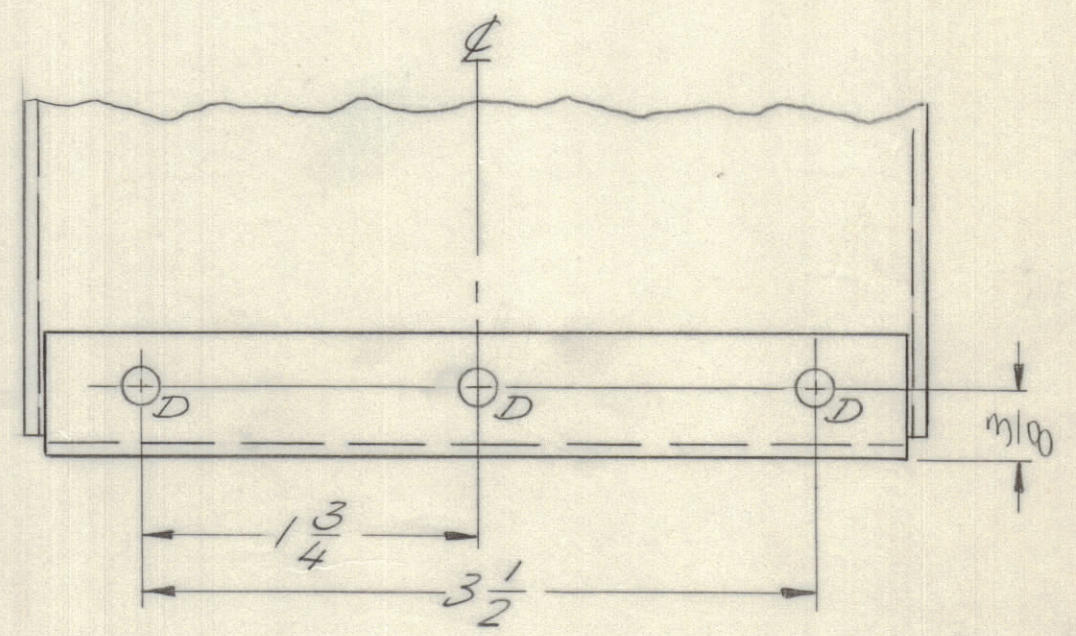
REVISIONS							
E.M.N.NO	DRAFT	CHKD	ZONE	LTR	DESCRIPTION	DATE	APPROVED
	KA			XI	REDRAWN & REV.	11/14/69	
	GE				ORIG. RELEASE FOR PRODUCTION	1/14/70	
20584	GE	EP		A	ADD 2 'B' HOLES DELE 3 'A' HOLES	4-11-72	EP



FRONT



2 MOUNT IN ALL 'G' HOLES AS SHOWN



HOLE	DESCRIPTION	REQ.
A	11/64 DIA.	9
B	11/64 x 11/32 SLOT	4
C	6-32 C'SINK-82°	6
D	13/64 DIA.	3
E	.250-.254 DIA	8
F	3/4 DIA.	1
G	.191-.194 DIA.	2

QTY. REQ.	ITEM	PART NO.	DESCRIPTION	SYMBOL
2	2	NT129-632-4	NUT, ROUND, SWAGE TYPE	G
8	1	NT129-1032-4	NUT, ROUND, SWAGE TYPE	E

F. BUDETTI LIST OF MATERIAL

UNLESS OTHERWISE SPECIFIED DIMENSIONS ARE IN INCHES AND INCLUDE CHEMICALLY APPLIED OR PLATED FINISHES		FINAL APPROVAL <i>[Signature]</i> DATE 1-12-70
TOLERANCES ON		MECH. DES. <i>ALP. Wsl</i> DATE 1-12-70
DECIMALS	FRACTIONS	ELECT. DES. <i>AGC</i> DATE 1-8-70
.X ± .05	± 1/64	CHECKED
.XX ± .01	ANGLES	DATE
.XXX ± .005	± 0° -30'	DRAWN <i>[Signature]</i> DATE 11/14/69

THE TECHNICAL MATERIEL CORP. MAMARONECK, NEW YORK

1	PALA 10KC )	PAS1460
QTY / UNIT	MODEL USED ON	ASS'Y NO.
APPLICATION		
CODE		

BAND SW. WRAPAROUND

NOTICE TO PERSONS RECEIVING THIS DRAWING THE TECHNICAL MATERIEL CORPORATION claims proprietary right in the material disclosed hereon. This drawing is issued in confidence for engineering information only and may not be reproduced or used to manufacture anything shown hereon without permission from THE TECHNICAL MATERIEL CORPORATION to the user. This drawing is loaned for mutual assistance and is subject to recall at any time.

MATERIAL	.081 ALUM. 5052 H32	SIZE	CODE IDENT NO.	DWG NO.	ISSUE
FINISH	S404 YEL. IRIDITE	C	82679	MS 5563	A

SCALE 1:1	SHEET	OF
-----------	-------	----

MS 5563