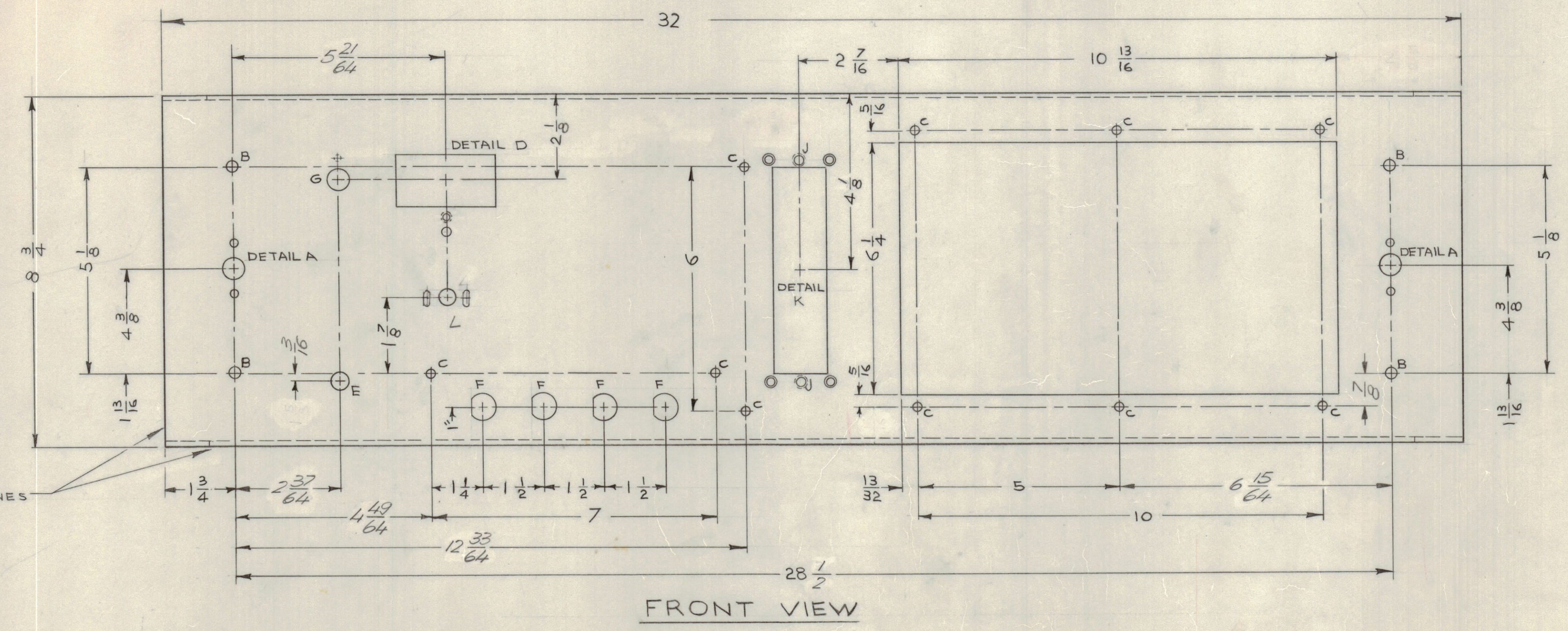
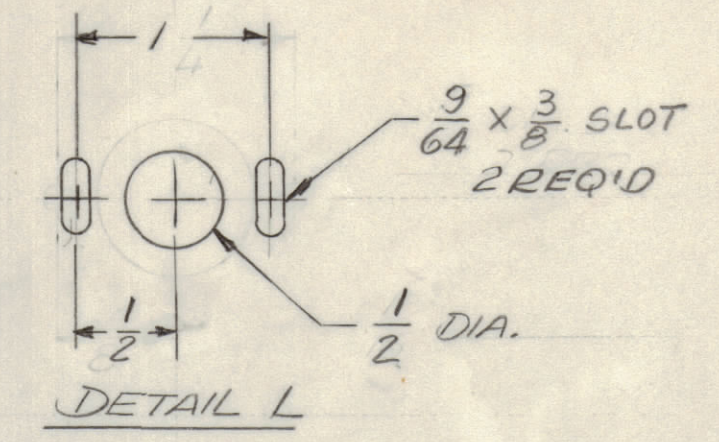
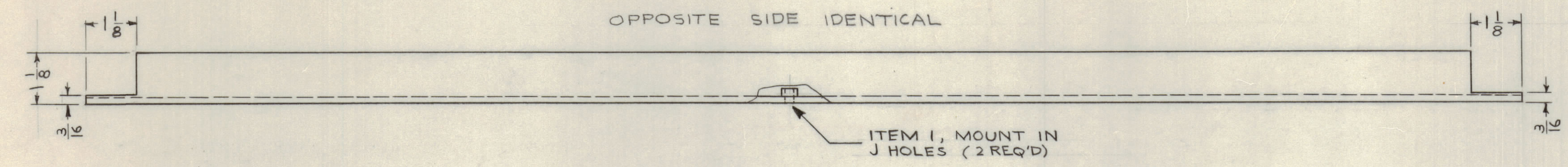
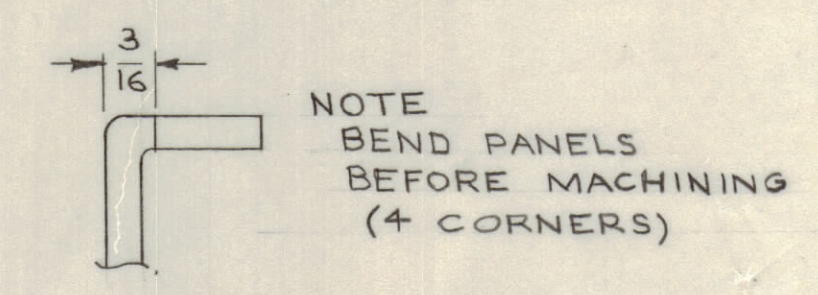


REVISIONS							
E.M.N.NO	DRAFT	CHKD	ZONE	LTR	DESCRIPTION	DATE	APPROVED
		KD		X	EXPERIMENTAL RELEASE	1-28-70	
		(S)			ORIGINAL RELEASE FOR PRODUCTION	2/4/70	
19908	LL	WJB		A	REVISED & UPDATED	6/23/70	FB
20576	GE	(S)		B	ADDED L HOLE & DETAIL	4/7/72	EG
21654	GDL	WJB		C	DETAIL 'L' MODIFIED, WAS 13/16 D & 9/64 DIA HCS	6-16-78	EG

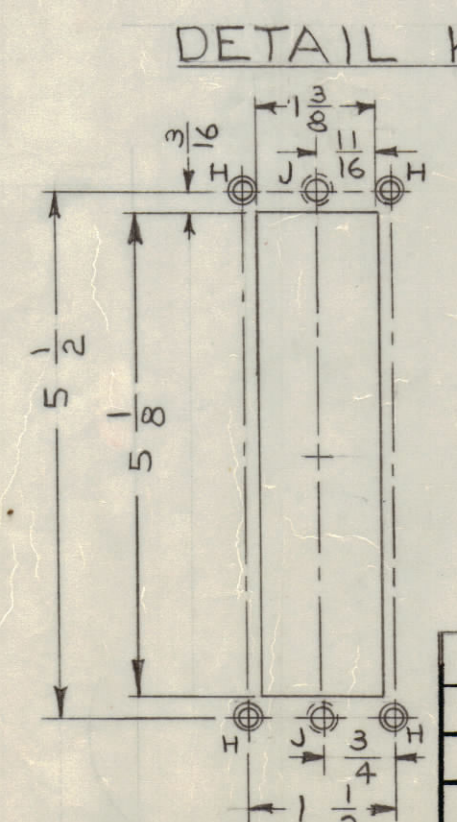
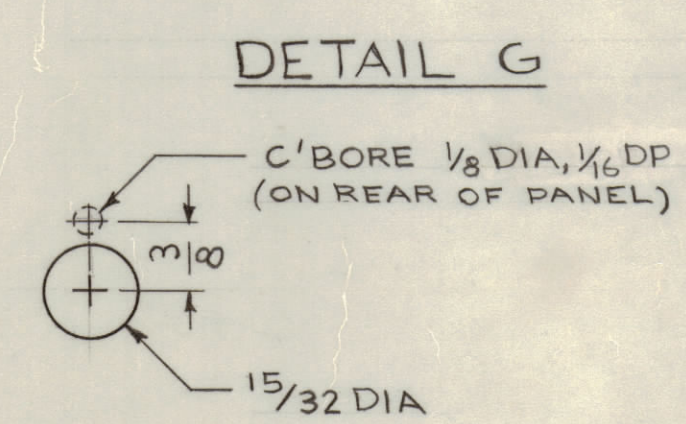
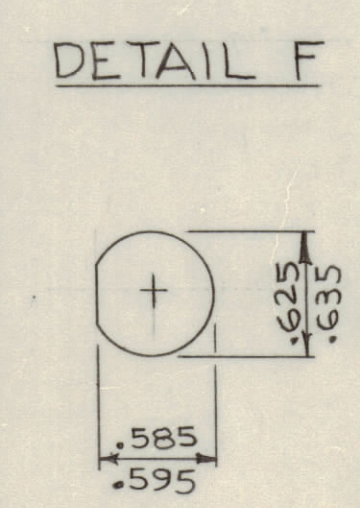
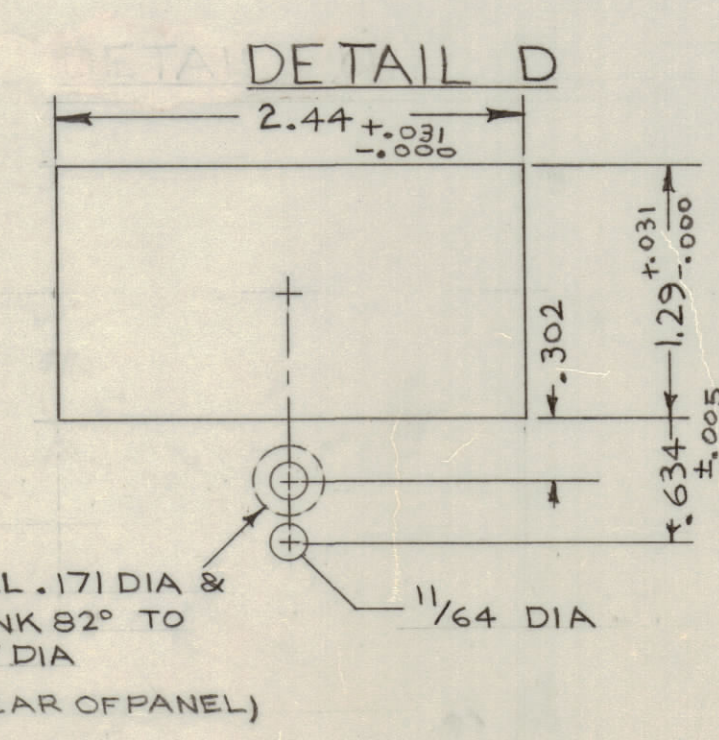
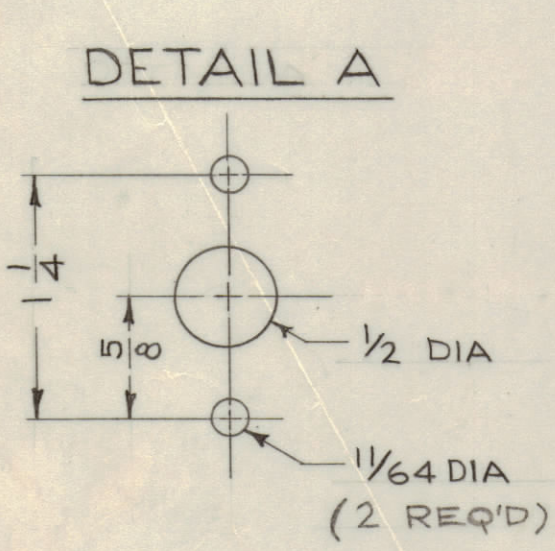


HOLE	DESCRIPTION	REQ'D
A	SEE DETAIL	2
B	15/64 DIA	4
C	13/64 DIA	10
D	SEE DETAIL	1
E	3/8 DIA	1
F	SEE DETAIL	4
G	SEE DETAIL	1
H	DRILL .144, C'SINK 82° TO .284	4
J	.191-.194 DIA	2
K	SEE DETAIL	1
L	SEE DETAIL	1



- FINISH NOTES:
- S404 - IRIDITE 14-2 AL-COAT.
  - S114 - ZINC CHROMATE PRIMER
  - S115 - SMOOTH GRAY ENAMEL
- FRONT AND EDGES ONLY OR PRIME AND PAINT PER CUSTOMER'S SPECIFICATIONS

- UNLESS OTHERWISE SPECIFIED:
- USE MATERIAL THICKNESS FOR MAXIMUM RADIUS ON ALL BENDS.
  - ALL ANGULAR BENDS 90 DEGREES.
  - REMOVE ALL BURRS AND SHARP EDGES.
  - MOUNT INSERTS AFTER FINISHING.



QTY / UNIT	MODEL USED ON	ASSY NO.
1	PALA 10K	AX5080
APPLICATION		
CODE		
MATERIAL		
1/8 ALUM, 5052 H32		
FINISH		
SEE NOTE		

UNLESS OTHERWISE SPECIFIED DIMENSIONS ARE IN INCHES AND INCLUDE CHEMICALLY APPLIED OR PLATED FINISHES

TOLERANCES ON

DECIMALS	FRACTIONS
.X ± .05	± 1/64
.XX ± .01	ANGLES
.XXX ± .005	± 0° - 30°

QTY. REQ.	ITEM	PART NO.	DESCRIPTION	SYMBOL
2	1	NT129-0632-6	NUT, ROUND, SWAGE TYPE	J
BUDETTI LIST OF MATERIAL				
FINAL APPROVAL: [Signature] DATE: 1-28-70				
MECH. DES. ALP DATE: 1-28-70				
ELECT. DES. DATE:				
CHECKED: DATE:				
DRAWN: Deletlein DATE: 1-28-70				
MATERIAL: 1/8 ALUM, 5052 H32				
FINISH: SEE NOTE				
THE TECHNICAL MATERIEL CORP. MAMARONECK, NEW YORK				
PANEL FRONT DRIVER				
SIZE [CODE IDENT NO] DWG NO. ISSUE				
D 82679 MS 5568 C				
SCALE 1:2 SHEET OF				

NOTICE TO PERSONS RECEIVING THIS DRAWING

THE TECHNICAL MATERIEL CORPORATION claims proprietary right in the material disclosed herein. This drawing is issued in confidence for engineering information only and may not be reproduced or used to manufacture anything shown hereon without permission from THE TECHNICAL MATERIEL CORPORATION to the user. This drawing is loaned for mutual assistance and is subject to recall at any time.