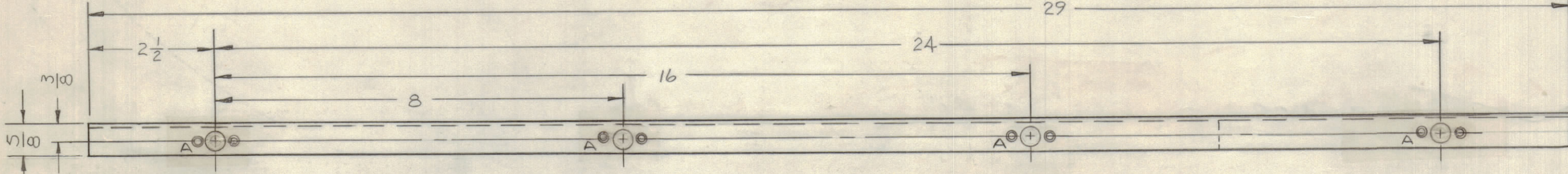
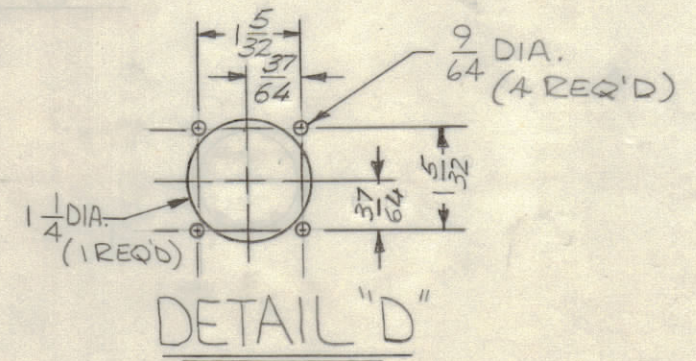
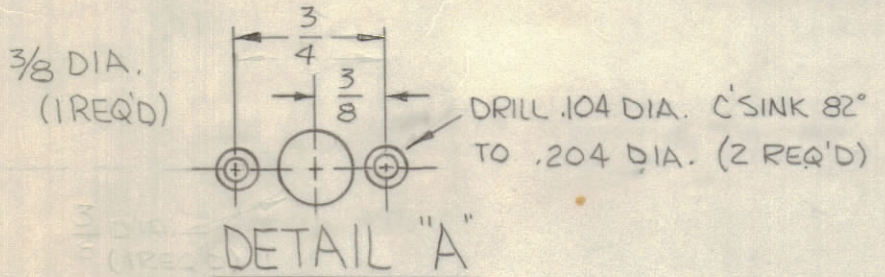
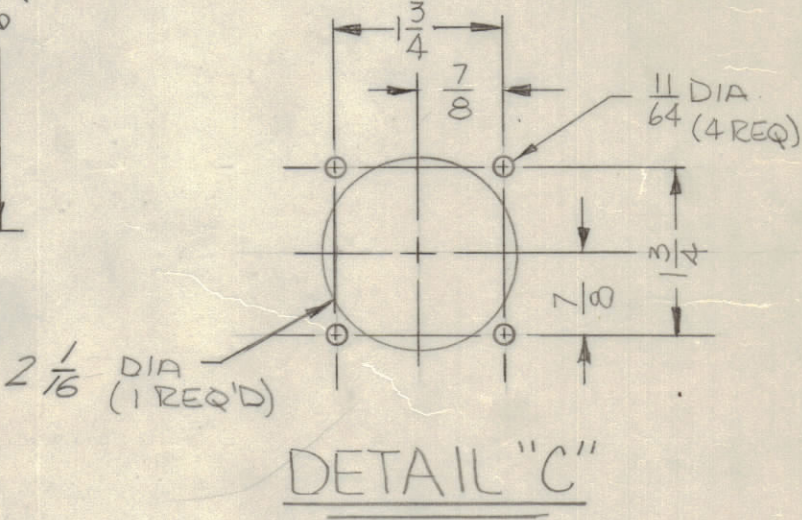
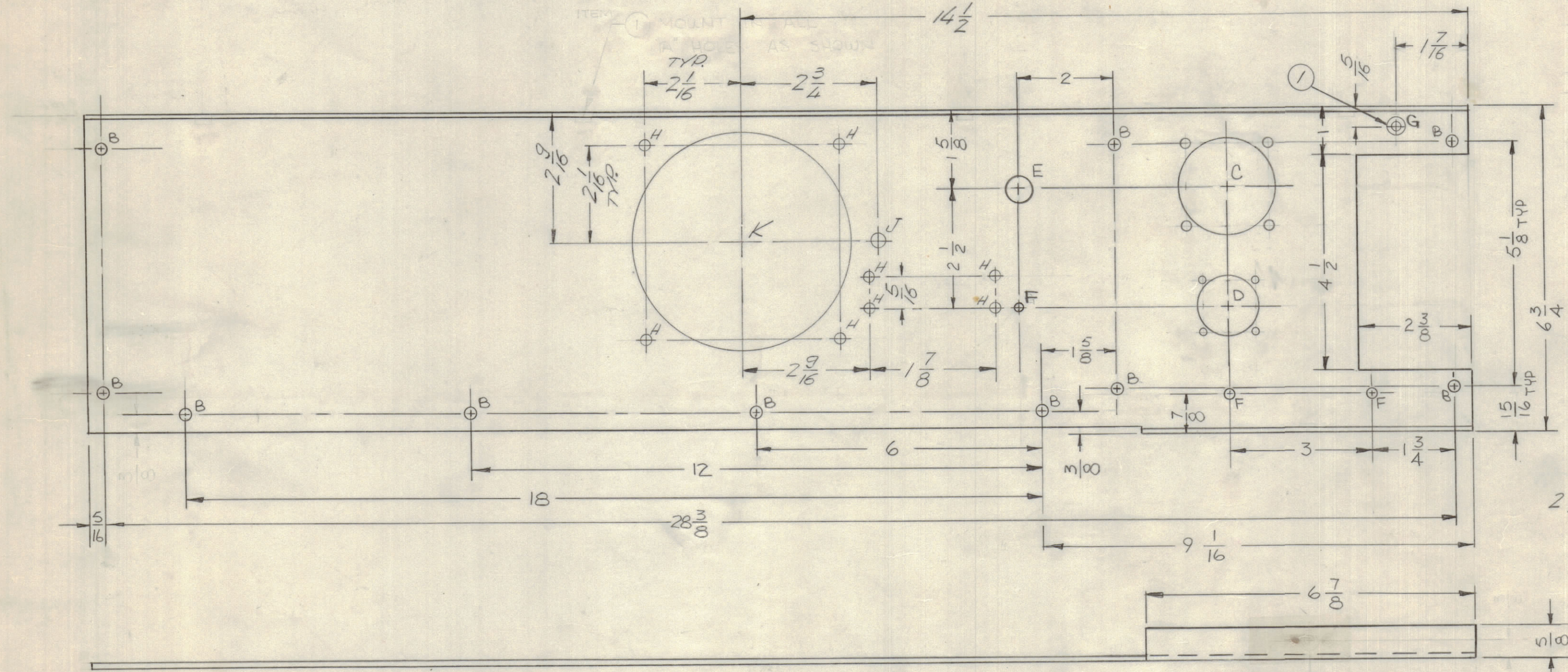


REVISIONS							
E.M.N.NO	DRAFT	CHKD	ZONE	LTR	DESCRIPTION	DATE	APPROVED
	RF			X1	RELOC 3/8 DIM FOR "B" HOLES	8-13-69	
	GE			X2	ADD. IT 1 & CHG C DETAIL DIM TO 2 1/8	9-23-69	
				Ø	ORIGINAL RELEASE FOR PRODUCTION	1/14/70	
19959	GE			A	REV'D DETAIL & E HL. DIM. WAS 17/32 D	8/29/70	
19989	GE			B	ADDED H.T.K HOLES	9/28/70	



HOLE	DESCRIPTION	REQ'D
A	SEE DETAIL	4
B	13/64 DIA.	10
C	SEE DETAIL	1
D	SEE DETAIL	1
E	19/32 DIA.	1
F	11/64 DIA.	3
G	.221 - .224 DIA.	1
H	9/64 DIA.	8
J	1/4 DIA.	1
K	4 1/2 DIA.	1



- UNLESS OTHERWISE SPECIFIED:
1. USE MATERIAL THICKNESS FOR MAXIMUM RADIUS ON ALL BENDS.
 2. ALL ANGULAR BENDS 90 DEGREES.
 3. REMOVE ALL BURRS AND SHARP EDGES.
 4. MOUNT INSERTS AFTER FINISHING.

QTY / UNIT	MODEL USED ON	ASS'Y NO.
1	PALM PALAYOR OR	AX5094
APPLICATION		
	CODE	

NOTICE TO PERSONS RECEIVING THIS DRAWING
 THE TECHNICAL MATERIEL CORPORATION claims proprietary right in the material disclosed herein. This drawing is issued in confidence for engineering information only and may not be reproduced or used to manufacture anything shown hereon without permission from THE TECHNICAL MATERIEL CORPORATION to the user. This drawing is loaned for mutual assistance and is subject to recall at any time.

UNLESS OTHERWISE SPECIFIED DIMENSIONS ARE IN INCHES AND INCLUDE CHEMICALLY APPLIED OR PLATED FINISHES

TOLERANCES ON

DECIMALS	FRACTIONS
.X ± .05	± 1/64
.XX ± .01	ANGLES
.XXX ± .005	± 0° -30'

MATERIAL .081 ALUM 5052-H32

FINISH S404 YELLOW IRIDITE

REF: LD2368

QTY. REQ.	ITEM	PART NO.	DESCRIPTION	SYMBOL
1	1	NT129-0832-4	NUT PLN SPLINE	G

F. BUDETTI LIST OF MATERIAL

FINAL APPROVAL: *[Signature]* DATE: 1-12-70
 MECH. DES. ALP DATE: 1-12-70
 ELECT. DES. AGC DATE: 1-8-70
 CHECKED DATE
 DRAWN RE DATE: 7-1-69

THE TECHNICAL MATERIEL CORP.
 MAMARONECK, NEW YORK

PLATE, REAR
 (EXCITER DRAWER)

SIZE	CODE	IDENT NO.	DWG NO.	ISSUE
C	82679	MS5592		B

SCALE: NOT TO SCALE SHEET OF 1

MS5592