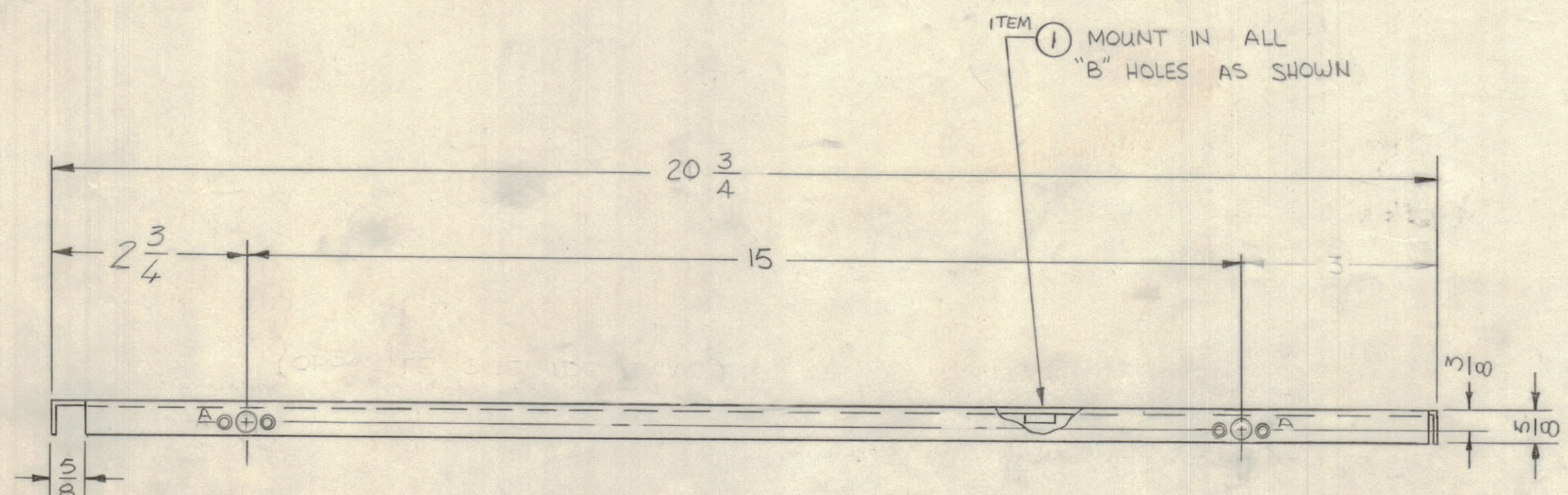
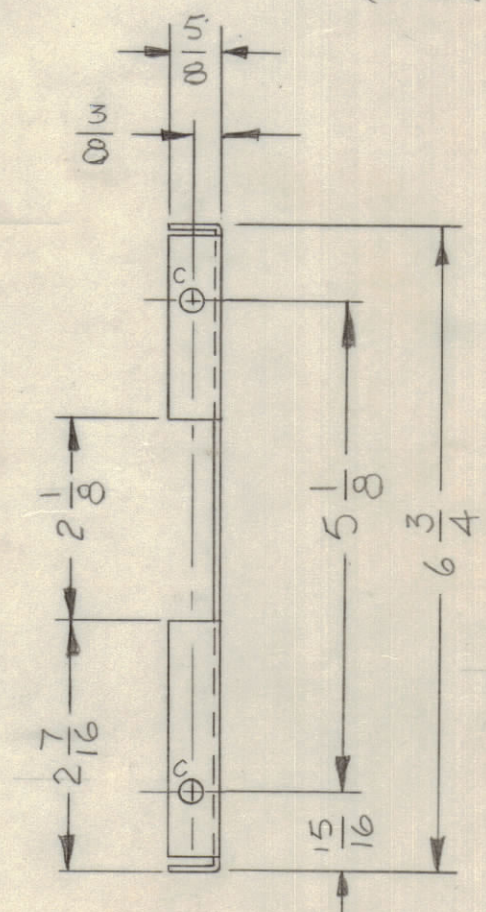
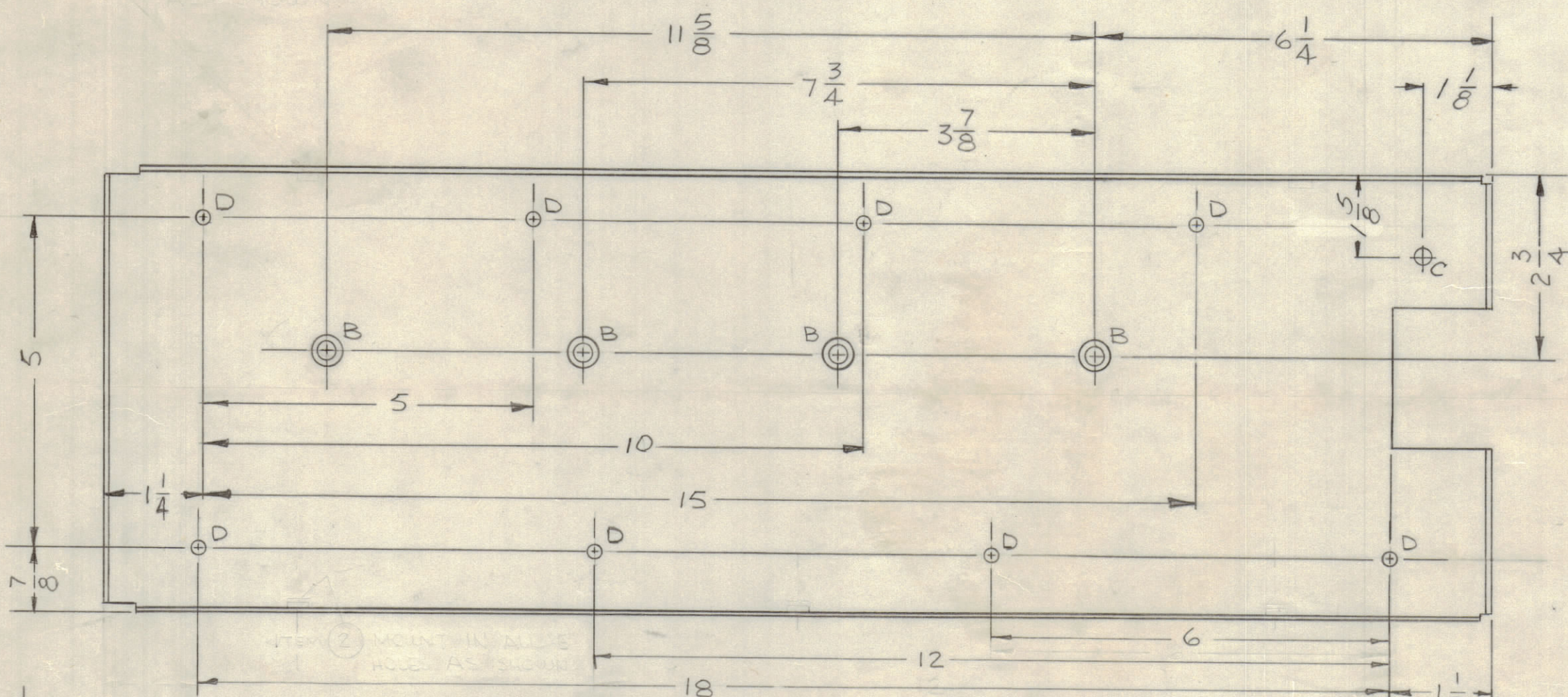
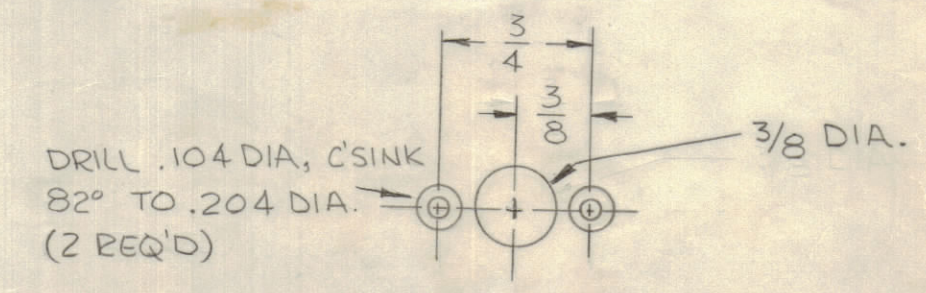


					REVISIONS		
E.M.N.NO	DRAFT	CHKD	ZONE	LTR	DESCRIPTION	DATE	APPROVED
	EP			X ₁	"E" HOLE WAS 3/16 DIA.	8-13-69	
	EP			X ₂	DELE "E" HOLES & ITEM 2, ADD 3 "A" HOLES	8-14-69	
	EP			X ₃	CHGD DIMS FR 21, 1 1/2, 2 5/16 TO 20 3/4, 1 1/4, 2 1/16	8-15-69	ED
	GE			X ₄	2 3/4 DIM ADD 3- DELE	10-29-69	EP
	W			Ø	ORIGINAL RELEASE FOR PRODUCTION	1/14/70	
20813	GE	EP		A	ADDED ONE "C" HOLE AREA B2	8-17-72	EP



HOLE	DESCRIPTION	REQ'D
A	SEE DETAIL	5
B	.250 - .254 DIA.	4
C	15/64 DIA.	5
D	1/16 DIA	8



(OPPOSITE SIDE IDENTICAL)

- UNLESS OTHERWISE SPECIFIED:
- USE MATERIAL THICKNESS FOR MAXIMUM RADIUS ON ALL BENDS.
 - ALL ANGULAR BENDS 90 DEGREES.
 - REMOVE ALL BURRS AND SHARP EDGES.
 - MOUNT INSERTS AFTER FINISHING.

1	HFTA 10K()	AX5094
QTY / UNIT	MODEL USED ON	ASS'Y NO.
APPLICATION		
CODE		

NOTICE TO PERSONS RECEIVING THIS DRAWING
 THE TECHNICAL MATERIEL CORPORATION claims proprietary right in the material disclosed hereon. This drawing is issued in confidence for engineering information only and may not be reproduced or used to manufacture anything shown hereon without permission from THE TECHNICAL MATERIEL CORPORATION to the user. This drawing is loaned for mutual assistance and is subject to recall at any time.

UNLESS OTHERWISE SPECIFIED DIMENSIONS ARE IN INCHES AND INCLUDE CHEMICALLY APPLIED OR PLATED FINISHES

TOLERANCES ON
 DECIMALS .X ± .05
 .XX ± .01
 .XXX ± .005
 FRACTIONS ± 1/64
 ANGLES ± 0° -30'

MATERIAL .081 ALUM. 5052-H32
 FINISH S404 YELLOW IRIDITE

4	1	NT129-1032-4	NUT, ROUND, SWAGE TYPE	B
QTY. REQ.	ITEM	PART NO.	DESCRIPTION	SYMBOL
F. BUDETTI LIST OF MATERIAL				
FINAL APPROVAL		DATE	THE TECHNICAL MATERIEL CORP.	
MECH. DES.		DATE	MAMARONECK, NEW YORK	
ELECT. DES.		DATE	PLATE, SIDE, RIGHT	
CHECKED		DATE	(EXCITER DRAWER)	
DRAWN		DATE	SIZE	CODE IDENT NO.
		6-30-69	C	82679
			DWG NO.	MS5594
			ISSUE	A
SCALE		SHEET		OF

MS 5594
A
B