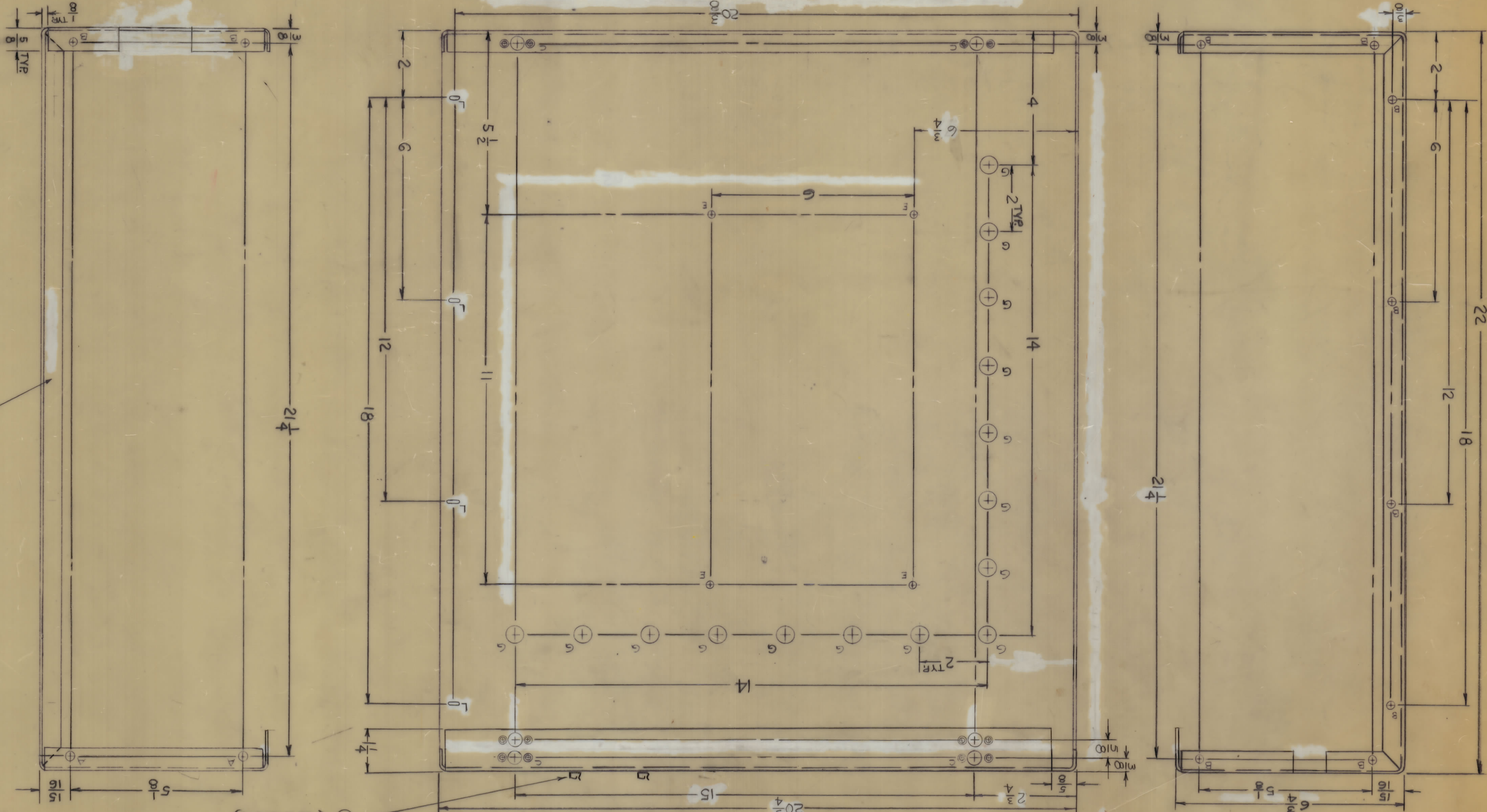
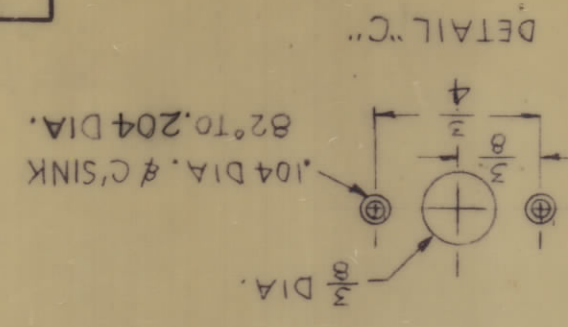
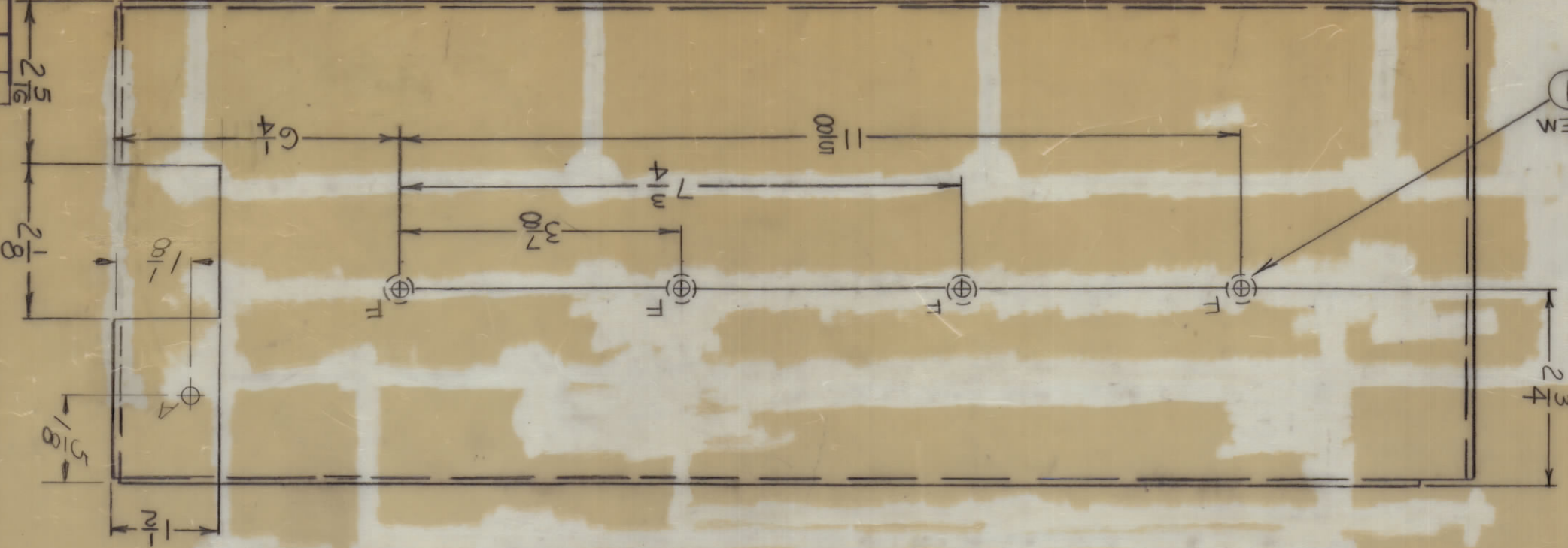


UNLESS OTHERWISE SPECIFIED:
 1. USE MATERIAL THICKNESS FOR MAXIMUM
 2. ALL ANGULAR BENDS 90 DEGREES
 3. REMOVE ALL BURRS AND SHARP EDGES

1
 MOUNT AS
 SHOWN.
 (A REG.)



2
 ITEM MOUNT AS SHOWN
 (USE EYELETS)

MARK TMC PM 1/8 HIGH GOTHIC
 W/LATEST REV LETTER.

REQ	DESCRIPTION	HOLE
A	15/64 DIA.	5
B	13/64 DIA.	10
C	SEE DETAIL	6
D	1/4 DIA.	11
E	11/64 DIA.	8
F	.250-.254 DIA.	7
G	1/2 DIA.	15
H	DELETED	7
J	.067 DIA.	4
K	9/64 DIA.	1
L	11/64 x 1/32 SLOT	4

QTY	ITEM	PART NO.	DESCRIPTION	SYMBOL
2	2	CU157-4	RETAINER, P.C. BOARD	J
4	1	NT129-1032-4	NUT, ROUND, SPLINE TYPE	F

LIST OF MATERIAL

DATE	BY	DESCRIPTION
1-12-70	ALR	MECH DES
1-12-70	ALR	ELECT DES

FINAL APPROVAL: *[Signature]*
 MECH DES: ALR
 DATE: 1-12-70

THE TECHNICAL MATERIAL CORP.
 MAMARONECK, NEW YORK

CHASSIS, EXCITER DRAWER

SIZE CODE IDENT. NO. DWG NO. MS5596
 SCALE: 1" = 1" (SCALE)
 SHEET 1 OF 1

REF: LD2370

ZONE	LTR	DESCRIPTION	DATE	E.M.N.O.	DRAFT	CHKD	APPD
X1		REVISED DIMS & ADD LIP TO SIDE VIEW	8/15/67				
X2		DELETED ONE RETAINER "H" HOLE	8/21/67				
X3		ADD 1 "K" HOLE	8/22/67				
A		ADD 4 LISTS, THIS WERE 10 REQS	1/17/68				
B		ADDED 4 E HOLES	3/27/68				
C		ADDED ONE A HOLE	8/17/68				

ZONE	LTR	DESCRIPTION	DATE	E.M.N.O.	DRAFT	CHKD	APPD
X1		REVISED DIMS & ADD LIP TO SIDE VIEW	8/15/67				
X2		DELETED ONE RETAINER "H" HOLE	8/21/67				
X3		ADD 1 "K" HOLE	8/22/67				
A		ADD 4 LISTS, THIS WERE 10 REQS	1/17/68				
B		ADDED 4 E HOLES	3/27/68				
C		ADDED ONE A HOLE	8/17/68				

MS5596