

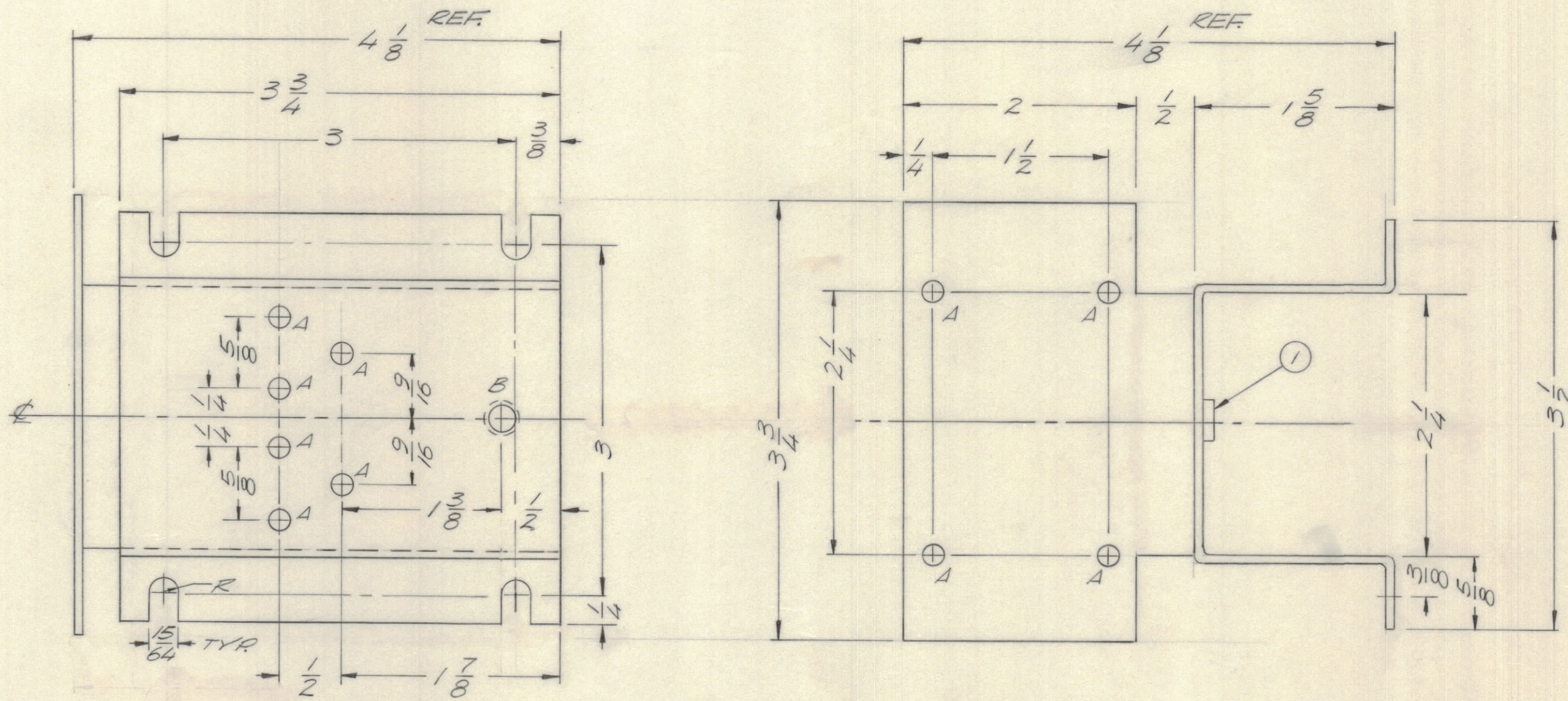
4

3

2

1

REVISIONS							
E.M.N.NO	DRAFT	CHKD	ZONE	LTR	DESCRIPTION	DATE	APPROVED
19807	GE	<i>[Signature]</i>		A	COMPLETELY REDESIGNED	5-4-70	



HOLE	DESCRIPTION	REQ.
A	11/64 DIA.	10
B	.221-.224 DIA.	1

QTY. REQ.	ITEM	PART NO.	DESCRIPTION	SYMBOL
1	1	NT129-0832-4	NUT PLW SPLINE	B

FINAL APPROVAL		DATE	THE TECHNICAL MATERIEL CORP.	
<i>[Signature]</i>	<i>[Signature]</i>	4/7/70	MAMARONECK, NEW YORK	
MECH. DES.		DATE	BRACKET, DIODE & RES. MTG.	
ELECT. DES.		DATE		
CHECKED		DATE		
DRAWN		DATE		
EVANGELIST		5-4-70		

QTY / UNIT	MODEL USED ON	ASS'Y NO.
1	HFLA 10 K	AP 148
APPLICATION		
CODE		

NOTICE TO PERSONS RECEIVING THIS DRAWING
 THE TECHNICAL MATERIEL CORPORATION claims proprietary right in the material disclosed hereon. This drawing is issued in confidence for engineering information only and may not be reproduced or used to manufacture anything shown hereon without permission from THE TECHNICAL MATERIEL CORPORATION to the user. This drawing is loaned for mutual assistance and is subject to recall at any time.

REF. LD 2377

UNLESS OTHERWISE SPECIFIED DIMENSIONS ARE IN INCHES AND INCLUDE CHEMICALLY APPLIED OR PLATED FINISHES

TOLERANCES ON
 DECIMALS .X ± .05
 FRACTIONS ± 1/64
 ANGLES .XX ± .01
 ± 0° -30'

MATERIAL .081 ALUM
 5052-H32

FINISH S404 IRIDITE

SIZE	CODE IDENT NO.	DWG NO.	ISSUE
C	82679	MS 5608	A
SCALE		SHEET OF	

4

3

2

1