

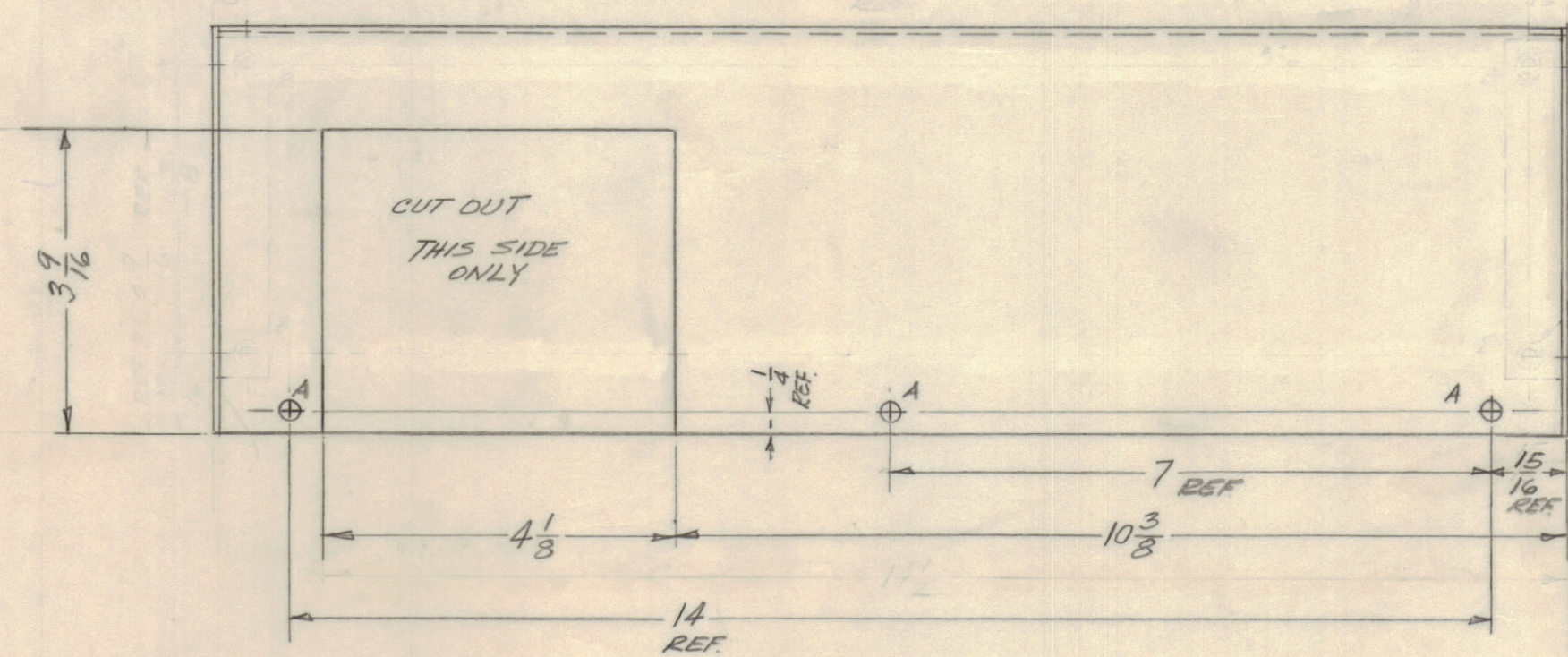
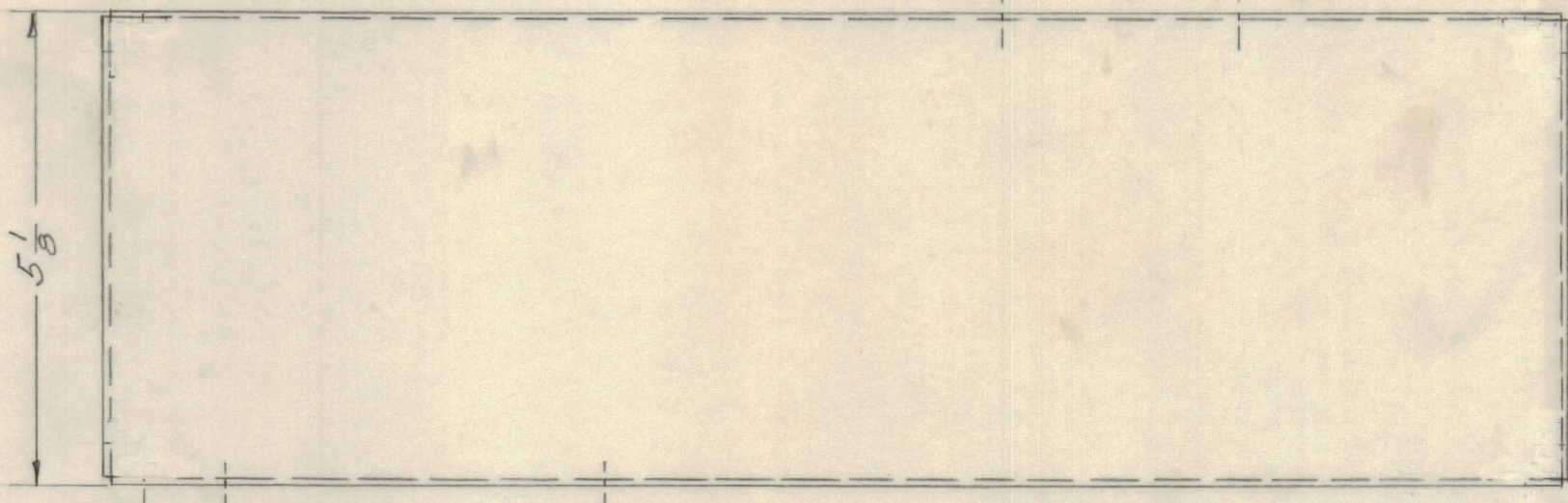
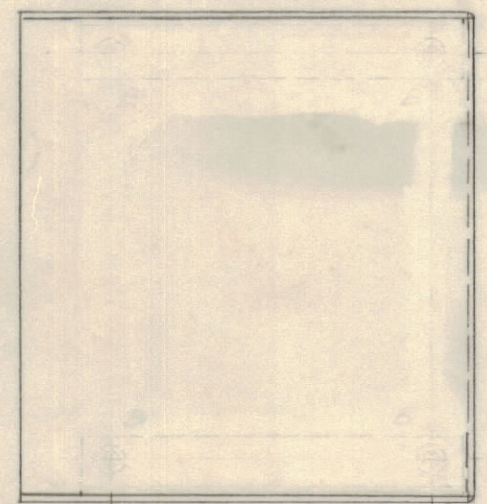
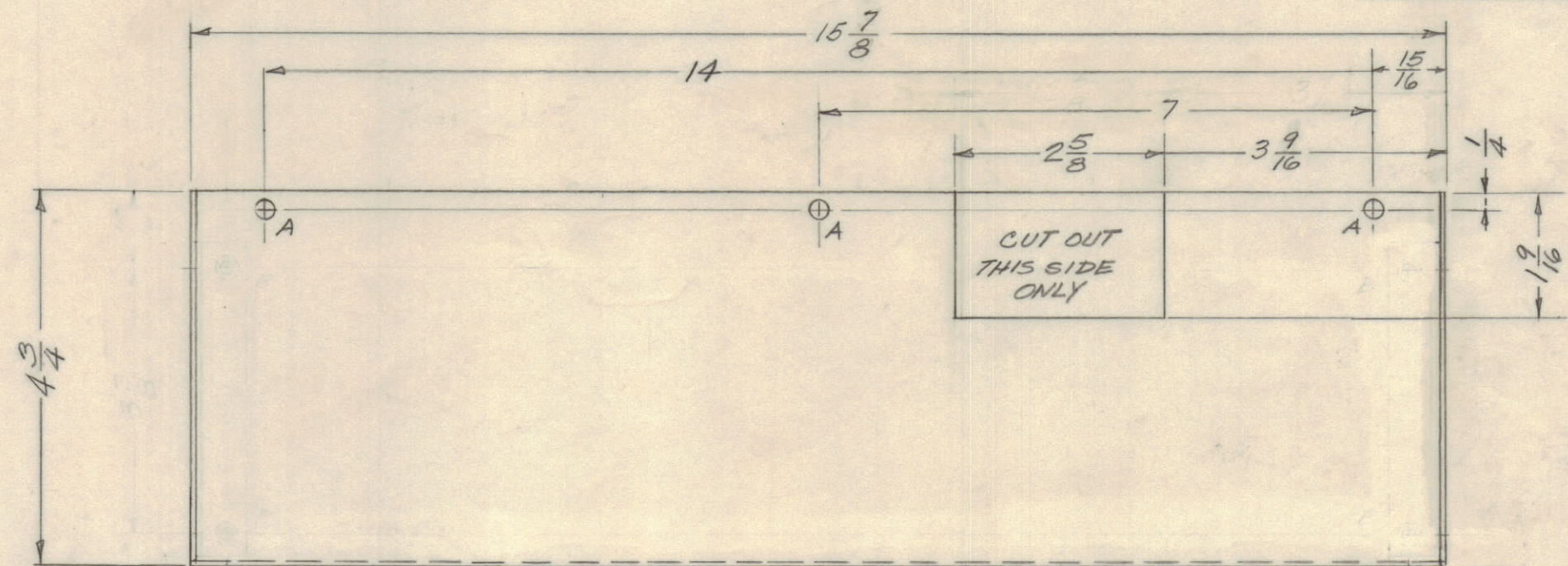
4

3

2

1

REVISIONS							
E.M.N.NO	DRAFT	CHKD	ZONE	LTR	DESCRIPTION	DATE	APPROVED
	(1)			Ø	ORIGINAL RELEASE FOR PRODUCTION	5/26/70	
20695	CE	EP		A	DELE L/M DELE. CORNER BRKT & B HOLES	5/19/72	EP



MATERIALS: 1/16" THICK 5052 H32 ALUM.
 DRILL 4 HOLES 1/16" DIA.
 PERFORATE 1 RE PER 1/16"
 45° CHAMFER ITEM 1 & 4
 MAKE 4 HOLES SWIT

OPPOSITE END IDENTICAL

HOLE LEGEND

HOLE	DIA.	REQ'D
A	1/164	6

NOTE
 COVER MATERIAL
 .051 THICK 5052 H32 ALUM.
 PERFORATED
 5/32 HOLES ON 3/16 CENTERS
 STAGGERED

QTY / UNIT	MODEL USED ON	ASS'Y NO.
1	AF 110	
APPLICATION		
	CODE	

NOTICE TO PERSONS RECEIVING THIS DRAWING
 THE TECHNICAL MATERIEL CORPORATION claims proprietary right in the material disclosed hereon. This drawing is issued in confidence for engineering information only and may not be reproduced or used to manufacture anything shown hereon without permission from THE TECHNICAL MATERIEL CORPORATION to the user. This drawing is loaned for mutual assistance and is subject to recall at any time.

UNLESS OTHERWISE SPECIFIED DIMENSIONS ARE IN INCHES AND INCLUDE CHEMICALLY APPLIED OR PLATED FINISHES

TOLERANCES ON

DECIMALS	FRACTIONS
.X ± .05	± 1/64
.XX ± .01	ANGLES
.XXX ± .005	± 0° -30'

MATERIAL
SEE NOTE

FINISH VEL. IRIDITE
AS PER 5404

QTY. REQ.	ITEM	PART NO.	DESCRIPTION	SYMBOL		
F. BUDETTI LIST OF MATERIAL						
			FLAT WASHER			
			LOCK WASHER, INT.			
			SCREW			
			NUT ROUND, CHARGE TYPE			
FINAL APPROVAL <i>[Signature]</i> DATE 5/26/70			THE TECHNICAL MATERIEL CORP. MAMARONECK, NEW YORK			
MECH. DES. <i>[Signature]</i> DATE 5/26/70						
ELECT. DES. <i>[Signature]</i> DATE 1/5/70						
DRAWN <i>[Signature]</i> DATE 2/24/70						
CHECKED			COVER, FILTER			
MATERIAL			SIZE	CODE IDENT NO.	DWG NO.	ISSUE
SEE NOTE			C	82679	MS 5637	A
FINISH VEL. IRIDITE AS PER 5404			SCALE 1/2	SHEET 1 OF 1		

4

3

2

1

MS 5637
A
B

A