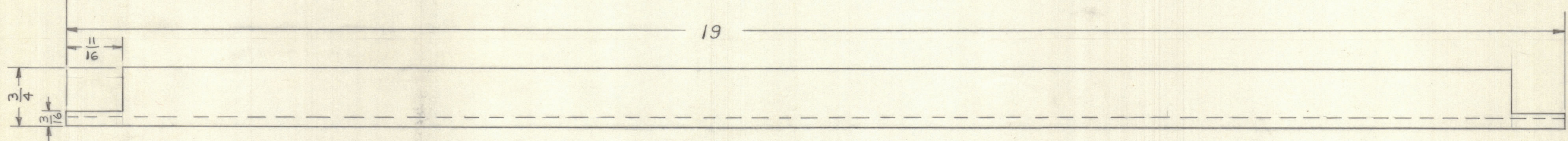
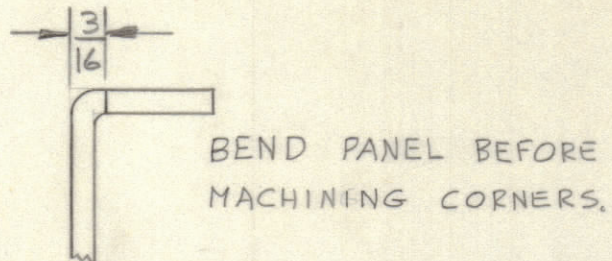
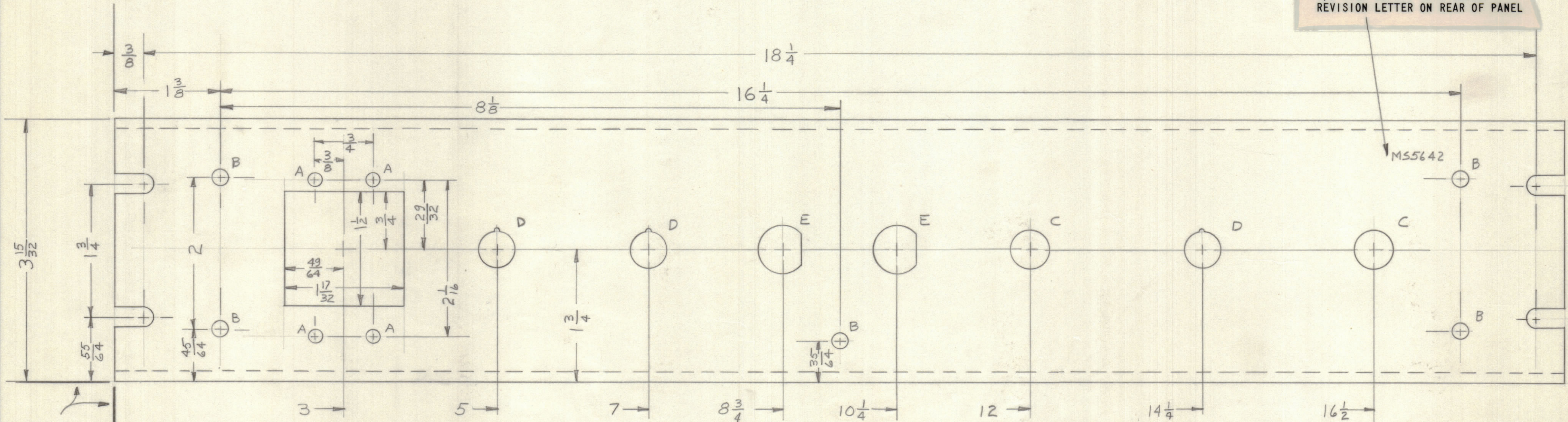


					REVISIONS		
E.M.N.NO	DRAFT	CHKD	ZONE	LTR	DESCRIPTION	DATE	APPROVED
	gr				ORIGINAL RELEASE FOR PRODUCTION	8/27/70	

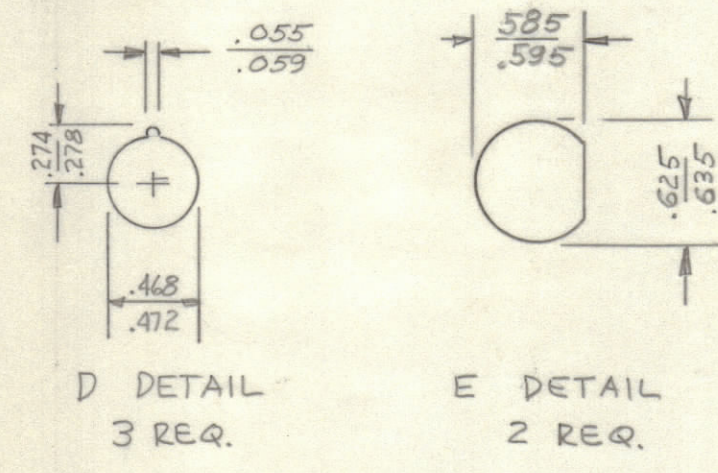


MARK TMC PART NUMBER
1/8 HIGH GOTHIC WITH LATEST
REVISION LETTER ON REAR OF PANEL



LOCATING
BASELINES

- A ~ 11/64 DIA. 4 REQ.
- B ~ 13/64 DIA. 5 REQ.
- C ~ 1/2 DIA. 2 REQ.



FINISH NOTES:

1. S404 - IRIDITE 14-2 AL-COAT.
2. S114 - ZINC CHROMATE PRIMER } FRONT AND
3. S115 - SMOOTH GRAY ENAMEL } EDGES ONLY

OR
PRIME AND PAINT PER CUSTOMER'S SPECIFICATIONS.

REF: LD2406

QTY / UNIT	MODEL USED ON	ASS'Y NO.
	APP-18	
APPLICATION		
CODE		

NOTICE TO PERSONS RECEIVING THIS DRAWING
THE TECHNICAL MATERIEL CORPORATION claims proprietary right in the material disclosed herein. This drawing is issued in confidence for engineering information only and may not be reproduced or used to manufacture anything shown hereon without permission from THE TECHNICAL MATERIEL CORPORATION to the user. This drawing is loaned for mutual assistance and is subject to recall at any time.

UNLESS OTHERWISE SPECIFIED DIMENSIONS ARE IN INCHES AND INCLUDE CHEMICALLY APPLIED OR PLATED FINISHES		FINAL APPROVAL <i>[Signature]</i> DATE 27 Feb 70	
TOLERANCES ON		MECH. DES. <i>[Signature]</i> DATE 25 AD 70	
DECIMALS	FRACTIONS	ELECT. DES. DATE	
.X ± .05	± 1/64	CHECKED DATE	
.XX ± .01	ANGLES	DRAWN <i>[Signature]</i> DATE 17 Jun 70	
.XXX ± .005	± 0° -30°		
MATERIAL 1/8 ALUM		SIZE CODE IDENT NO. DWG NO.	
5052-H32		C 82679 MS5642	
FINISH SEE NOTES		SCALE SHEET OF	

QTY. REQ.	ITEM	PART NO.	DESCRIPTION	SYMBOL
BUDETTI LIST OF MATERIAL				
THE TECHNICAL MATERIEL CORP. MAMARONECK, NEW YORK				
PANEL, FRONT				
			SIZE CODE IDENT NO. DWG NO.	ISSUE
			C 82679 MS5642	Ø
			SCALE SHEET OF	