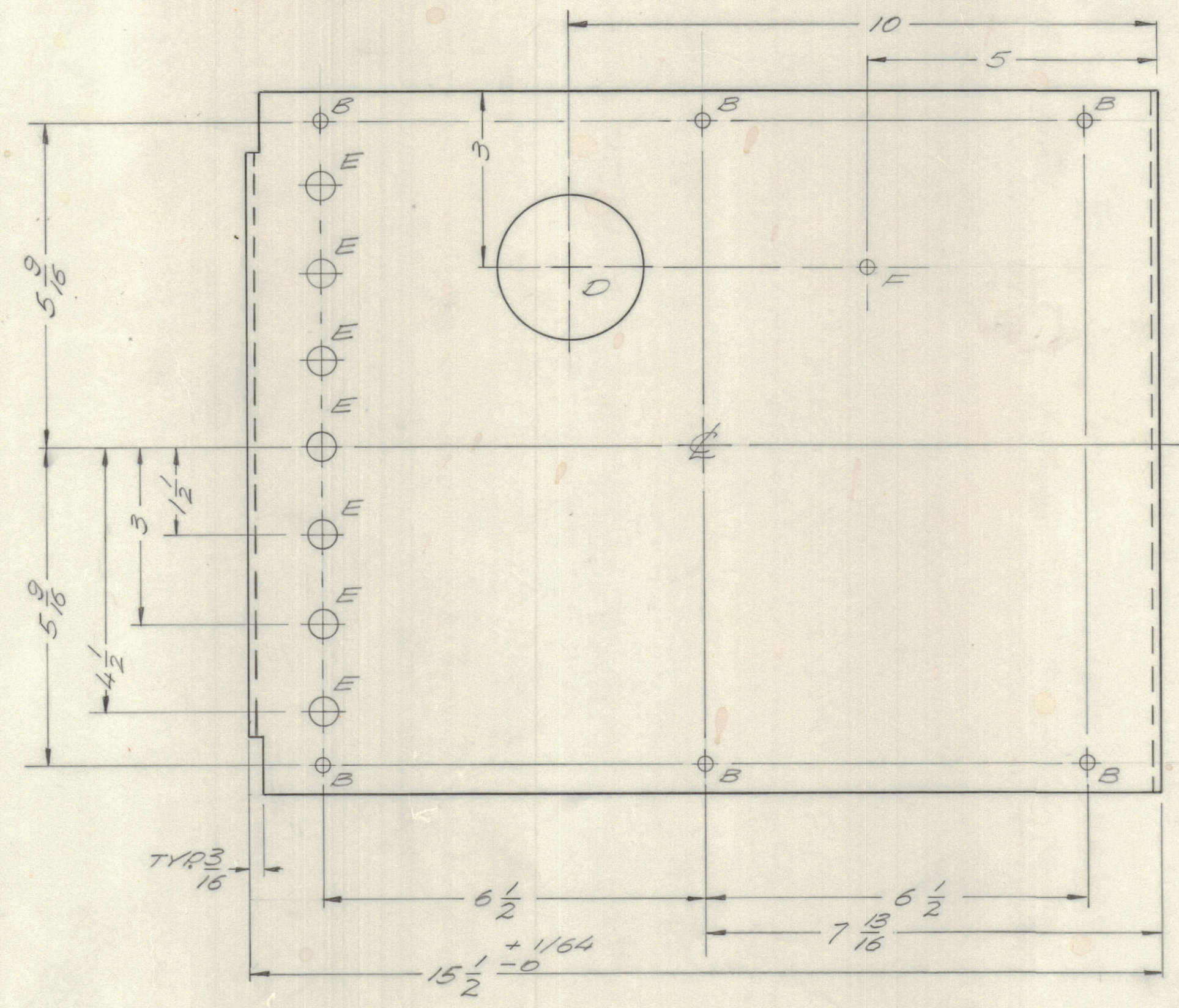
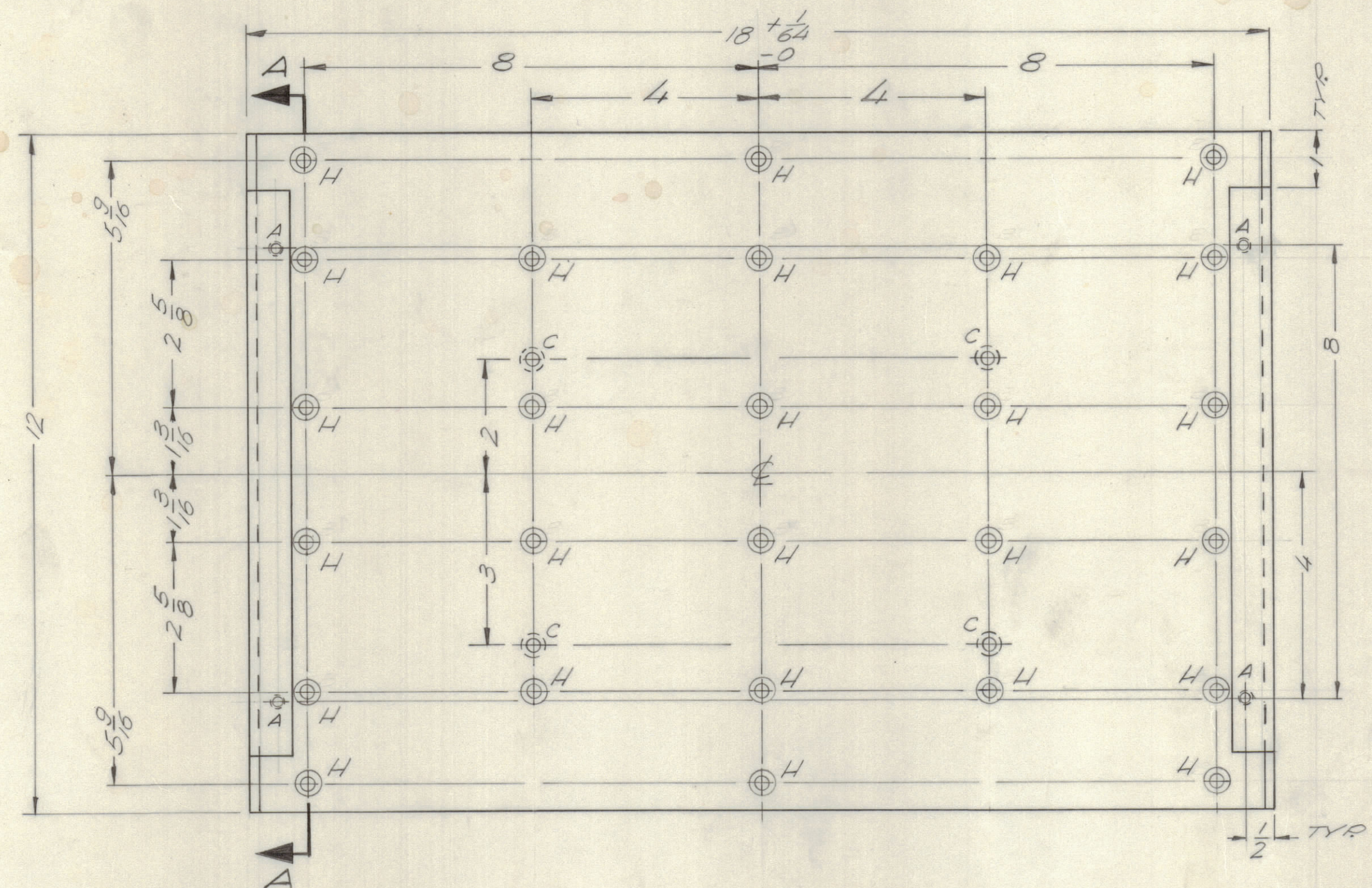
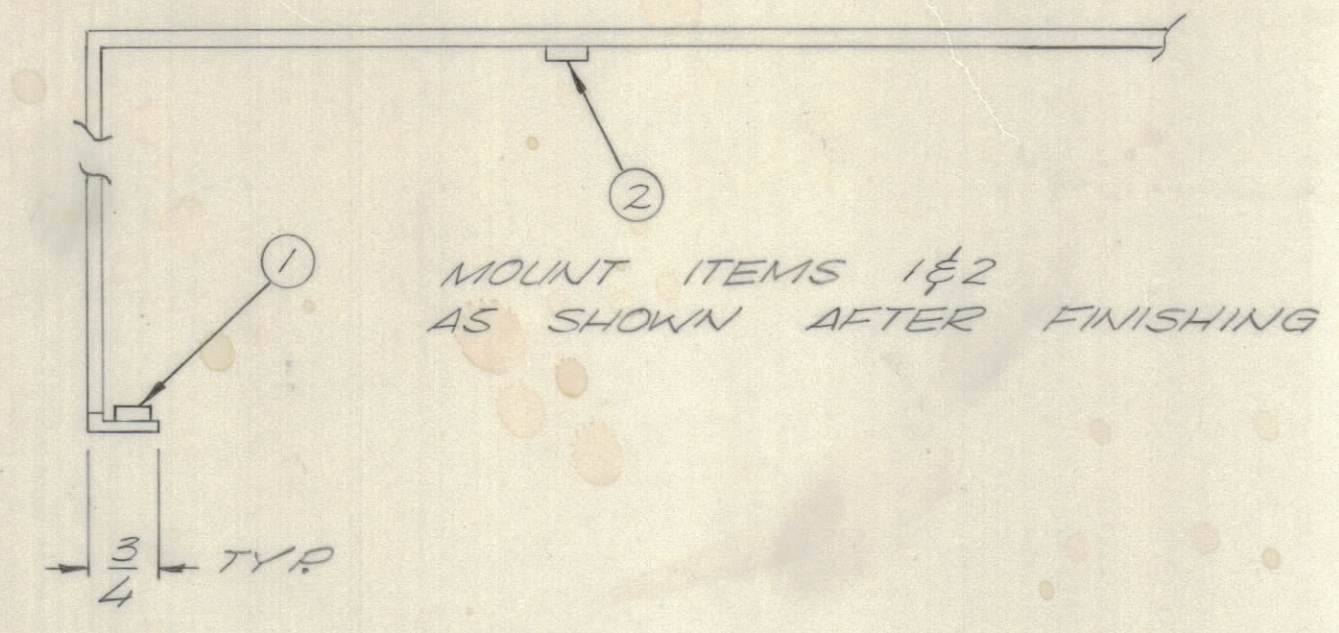
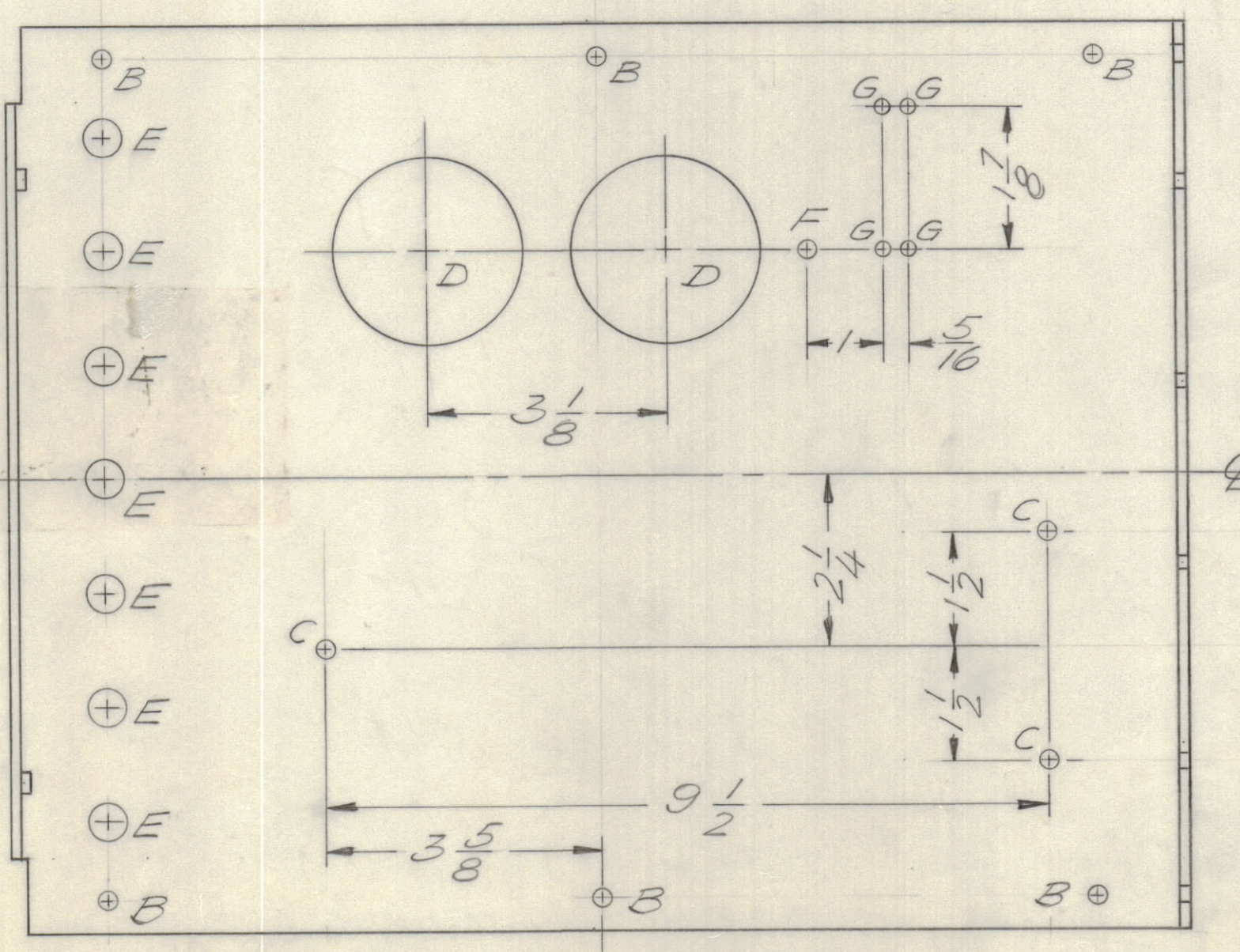


REVISIONS							
E.M.N.NO	DRAFT	CHKD	ZONE	LTR	DESCRIPTION	DATE	APPROVED
	RLA			X1	SEC 2-A ADD.	9/24/70	
	CU			Ø	ORIGINAL RELEASE FOR PRODUCTION	9/17/70	



OPPOSITE SIDE IS MIRROR IMAGE
SEE SECTION A-A



SECTION A-A
MISSING DIMENSIONS ARE IDENTICAL TO OPPOSITE SIDE

HOLE	DESCRIPTION	QTY
A	.191-.194 DIA.	4
B	15/64 DIA.	12
C	.344-.347	7
D	2 1/2 DIA.	3
E	1/2 DIA.	14
F	9/32 DIA.	2
G	5/32 DIA.	4
H	CSNK FOR B-324HS	26

- UNLESS OTHERWISE SPECIFIED:
- USE MATERIAL THICKNESS FOR MAXIMUM RADIUS ON ALL BENDS.
 - ALL ANGULAR BENDS 90 DEGREES.
 - REMOVE ALL BURRS AND SHARP EDGES.
 - MOUNT INSERTS AFTER FINISHING.

1	SYM 1200	AX5121
QTY / UNIT	MODEL USED ON	ASSY NO.
APPLICATION		
CODE		
NOTICE TO PERSONS RECEIVING THIS DRAWING THE TECHNICAL MATERIEL CORPORATION claims proprietary right in the material disclosed hereon. This drawing is issued in confidence for engineering information only and may not be reproduced or used to manufacture anything shown herein without permission from THE TECHNICAL MATERIEL CORPORATION to the user. This drawing is loaned for mutual assistance and is subject to recall at any time.		

UNLESS OTHERWISE SPECIFIED DIMENSIONS ARE IN INCHES AND INCLUDE CHEMICALLY APPLIED OR PLATED FINISHES

TOLERANCES ON
 DECIMALS FRACTIONS
 X ± .05 ± 1/64
 XX ± .01 ANGLES
 XXX ± .005 ± 0° -30°

MATERIAL .125 ALUM 5052 H32
 FINISH S114-S520 THC BLUE-GREY TEXTURED

QTY. REQ.		ITEM	PART NO.	DESCRIPTION	SYMBOL
4	2	NT129 420-6		NUT SPLINE	C
4	1	NT129 0632-6		NUT SPLINE	A
F. BUDETTI LIST OF MATERIAL					
FINAL APPROVAL		DATE	THE TECHNICAL MATERIEL CORP.		
MECH. DES.		17 Sep 70	MAMARONECK, NEW YORK		
ELECT. DES.		9/17/70	CHASSIS XFMR MTG.		
CHECKED		DATE			
DRAWN		DATE			
E. WANGELIST		8-5-70	SIZE	CODE IDENT NO.	DWG NO.
			D	82679	MS 5647
SCALE 1/2		SHEET		OF	