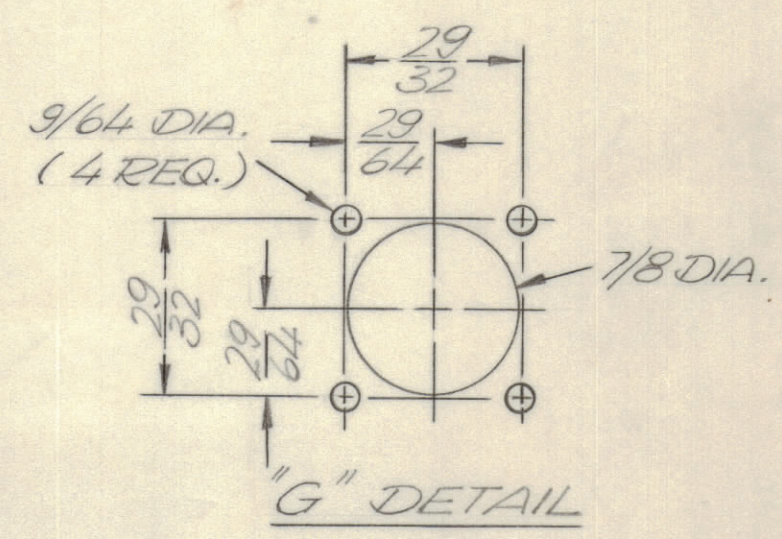
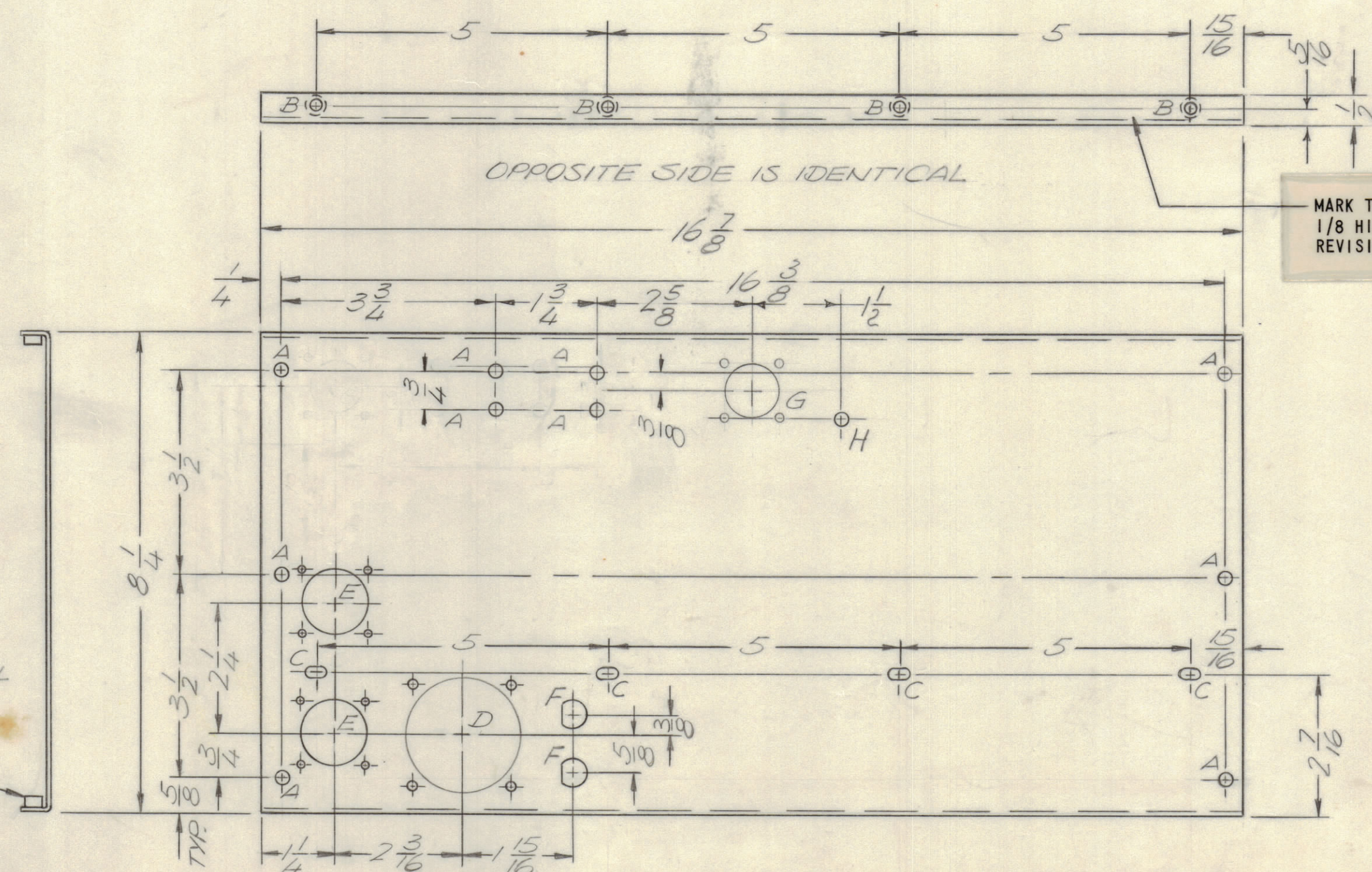


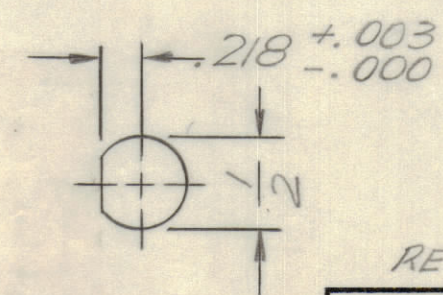
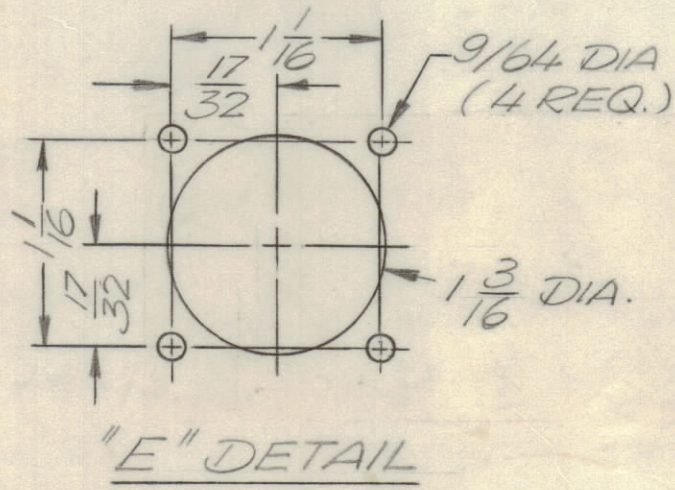
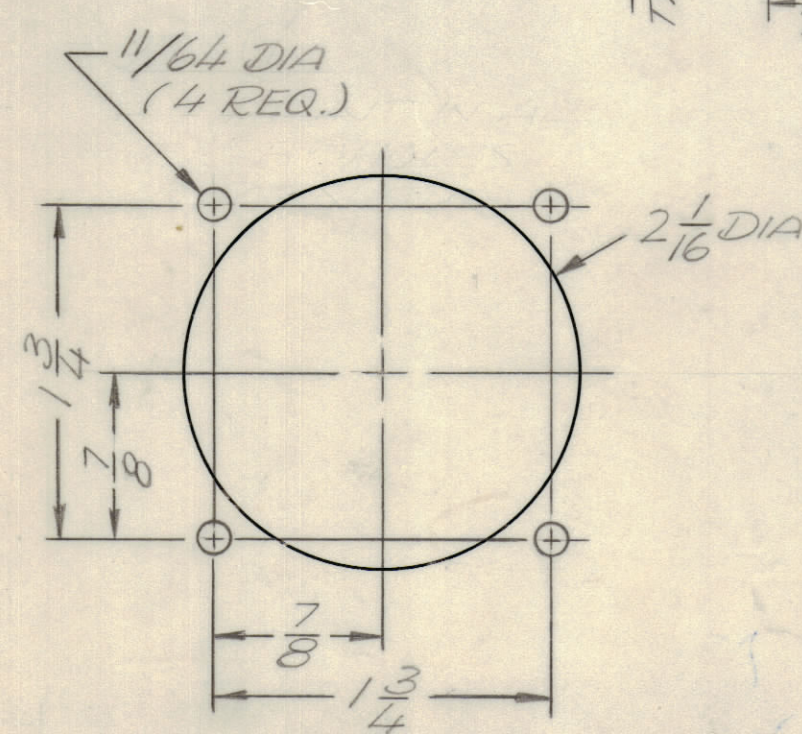
REVISIONS							
E.M.N.NO	DRAFT	CHKD	ZONE	LTR	DESCRIPTION	DATE	APPROVED
	RT			X	EXP. RELEASE	10/11/70	
	Q			O	ORIGINAL RELEASE FOR PRODUCTION	10/15/70	
20078	DM	DM		A	DELE. 2 "A" HOLES	11/2/70	DM
20154	RT			B	REPOSITION B & G HOLES	12-30-70	PE
20258	RT	Q		C	ADD "H" HOLE & DIM	3-1-71	PE



- HOLE LEGEND:**
- A - 11/64 DIA (10 REQ.)
  - B - .191 - .194 DIA. (8 REQ.)
  - C - 11/64 x 11/32 SLOT (4 REQ.)
  - D - SEE DETAIL (1 REQ.)
  - E - SEE DETAIL (2 REQ.)
  - F - SEE DETAIL (2 REQ.)
  - G - SEE DETAIL (1 REQ.)
  - H - 15/64 (1 REQ.)

- UNLESS OTHERWISE SPECIFIED:**
1. USE MATERIAL THICKNESS FOR MAXIMUM RADIUS ON ALL BENDS.
  2. ALL ANGULAR BENDS 90 DEGREES.
  3. REMOVE ALL BURRS AND SHARP EDGES.
  4. MOUNT INSERTS AFTER FINISHING.

MOUNT IN ALL "B" HOLES AS SHOWN



QTY. REQ.	ITEM	PART NO.	DESCRIPTION	SYMBOL
8	1	NT129-0632-4	NUT, ROUND, SWAGE TYPE	B

F. BUDETTI LIST OF MATERIAL			
FINAL APPROVAL	DATE	<b>THE TECHNICAL MATERIEL CORP.</b> MAMARONECK, NEW YORK  PANEL, REAR	
MECH. DES.	DATE		
ELECT. DES.	DATE		
CHECKED	DATE		
DRAWN	DATE		

QTY / UNIT	MODEL USED ON	ASS'Y NO.
1	TLAM-1K	

**NOTICE TO PERSONS RECEIVING THIS DRAWING**  
THE TECHNICAL MATERIEL CORPORATION claims proprietary right in the material disclosed herein. This drawing is issued in confidence for engineering information only and may not be reproduced or used to manufacture anything shown hereon without permission from THE TECHNICAL MATERIEL CORPORATION to the user. This drawing is loaned for mutual assistance and is subject to recall at any time.

REF: LD 2424

UNLESS OTHERWISE SPECIFIED DIMENSIONS ARE IN INCHES AND INCLUDE CHEMICALLY APPLIED OR PLATED FINISHES

**TOLERANCES ON**

DECIMALS	FRACTIONS
.X ± .05	± 1/64
.XX ± .01	ANGLES
.XXX ± .005	± 0° -30'

**MATERIAL** .064 ALLUM.  
5052 - H32

**FINISH** S404 YEL. IRIDITE

SIZE	CODE IDENT NO.	DWG NO.	ISSUE
C	82679	MS 5663	C

SCALE 1/2 SHEET OF

MS 5663