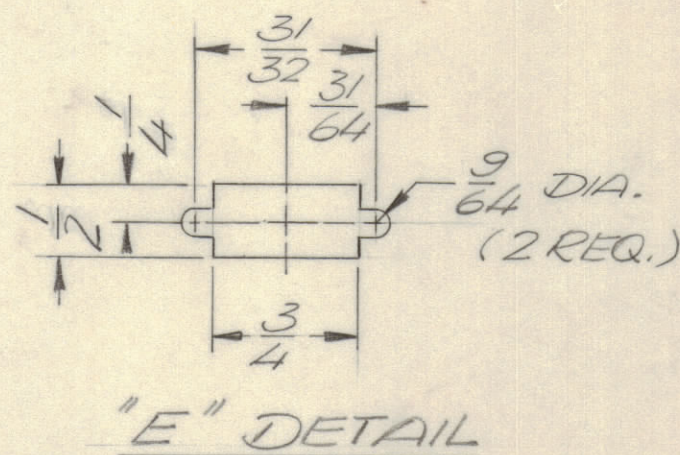


| REVISIONS |       |      |      |     |                                 |          |
|-----------|-------|------|------|-----|---------------------------------|----------|
| E.M.NO    | DRAFT | CHKD | ZONE | LTR | DESCRIPTION                     | DATE     |
|           | LA    |      |      | X   | EXP. RELEASE                    | 8/11/70  |
|           | CD    |      |      | O   | ORIGINAL RELEASE FOR PRODUCTION | 10/13/70 |
| 20078     | LA    | LA   |      | A   | ADD 2 'A' HOLES & 1 G HOLE      | 11/2/70  |
| 20119     | GE    | LA   |      | B   | ADD 4 HOLES & 2 'C' SLOTS       | 11/18/70 |
| 20240     | GE    | CD   |      | C   | ADD ONE C HOLE                  | 2/19/71  |

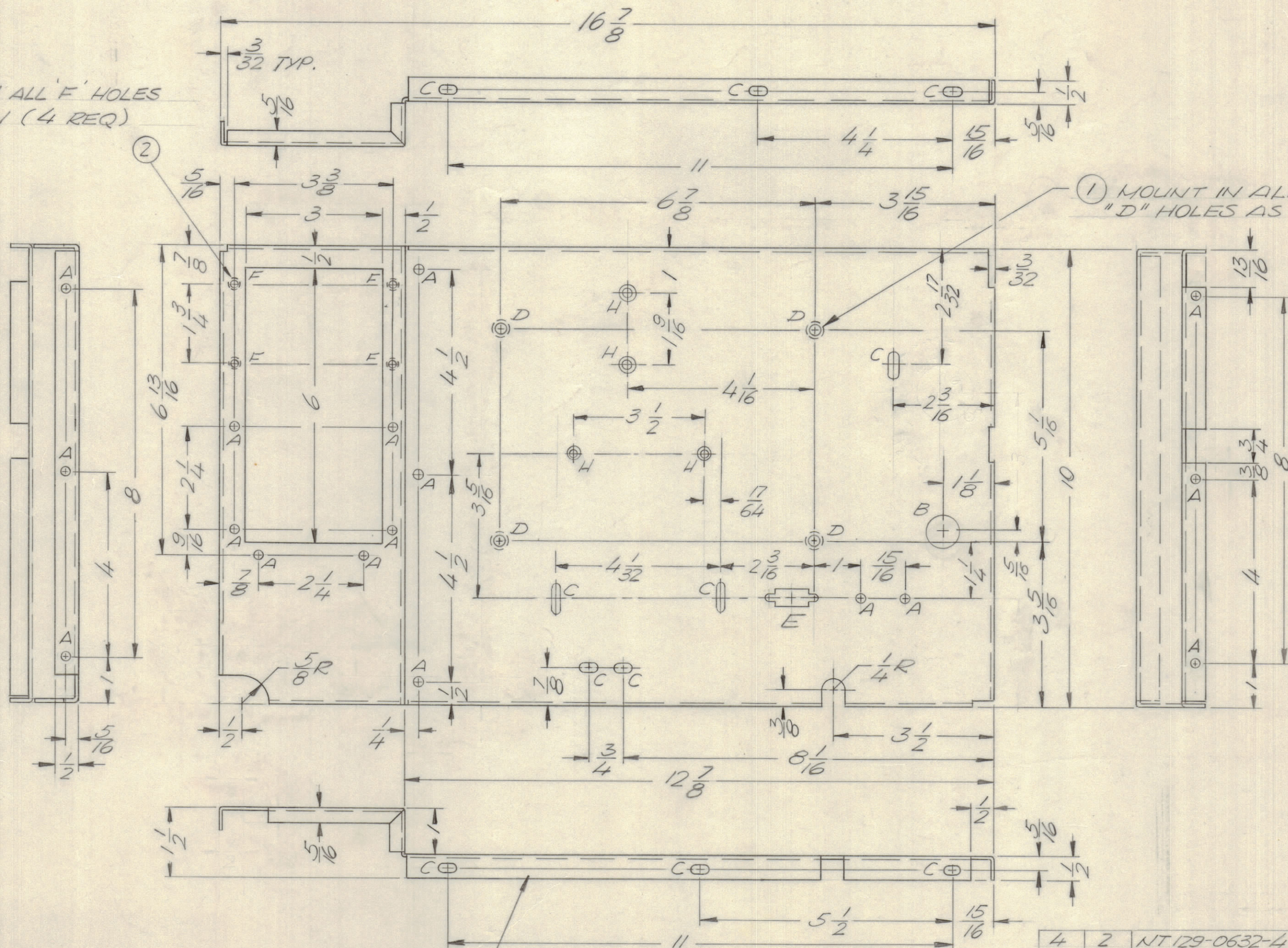
MOUNT IN ALL 'F' HOLES AS SHOWN (4 REQ)

MOUNT IN ALL 'D' HOLES AS SHOWN



**HOLE LEGEND**

- A - 11/64 DIA. (17 REQ.)
- B - 3/4 DIA (1 REQ.)
- C - 11/64 x 11/32 SLOT (11 REQ.)
- D - .250 - .254 DIA. (4 REQ.)
- E - SEE DETAIL (1 REQ.)
- F - .191 - .194 DIA. (4 REQ.)
- G - DELETED
- H - DRILL & C'SNK .0632 SCREW (82°)



MARK TMC PART NUMBER 1/8 HIGH GOTHIC WITH LATEST REVISION LETTER

REF: LD2425

UNLESS OTHERWISE SPECIFIED DIMENSIONS ARE IN INCHES AND INCLUDE CHEMICALLY APPLIED OR PLATED FINISHES

**TOLERANCES ON**

- DECIMALS
- .X ± .05
- .XX ± .01
- .XXX ± .005
- FRACTIONS
- ± 1/64
- ANGLES
- ± 0° - 30'

MATERIAL .064 ALLUM.  
5052 - H32  
FINISH S404 YEL. IRIDITE

| QTY. REQ. | ITEM | PART NO.     | DESCRIPTION            | SYMBOL |
|-----------|------|--------------|------------------------|--------|
| 4         | 2    | NT129-0632-4 | NUT ROUND SWAGE TYPE   | F      |
| 4         | 1    | NT129-1032-4 | NUT, ROUND, SWAGE TYPE | D      |

**F. BUDETTI LIST OF MATERIAL**

|                |      |
|----------------|------|
| FINAL APPROVAL | DATE |
| MECH. DES.     | DATE |
| ELECT. DES.    | DATE |
| CHECKED        | DATE |
| DRAWN          | DATE |

**THE TECHNICAL MATERIEL CORP.**  
MAMARONECK, NEW YORK

CHASSIS, MAIN

|       |                |         |          |
|-------|----------------|---------|----------|
| SIZE  | CODE IDENT NO. | DWG NO. | ISSUE    |
| C     | 82679          | MS 5666 | C        |
| SCALE | 1/2            |         | SHEET OF |

**UNLESS OTHERWISE SPECIFIED:**

1. USE MATERIAL THICKNESS FOR MAXIMUM RADIUS ON ALL BENDS.
2. ALL ANGULAR BENDS 90 DEGREES.
3. REMOVE ALL BURRS AND SHARP EDGES.
4. MOUNT INSERTS AFTER FINISHING.

|   |               |           |
|---|---------------|-----------|
| 1   | TLAM-1K       |           |
| QTY / UNIT  | MODEL USED ON | ASS'Y NO. |
| APPLICATION   |               |           |
| CODE  |               |           |
| NOTICE TO PERSONS RECEIVING THIS DRAWING  |               |           |
| THE TECHNICAL MATERIEL CORPORATION claims proprietary right in the material disclosed hereon. This drawing is issued in confidence for engineering information only and may not be reproduced or used to manufacture anything shown hereon without permission from THE TECHNICAL MATERIEL CORPORATION to the user. This drawing is loaned for mutual assistance and is subject to recall at any time. |               |           |

MS 5666 C B