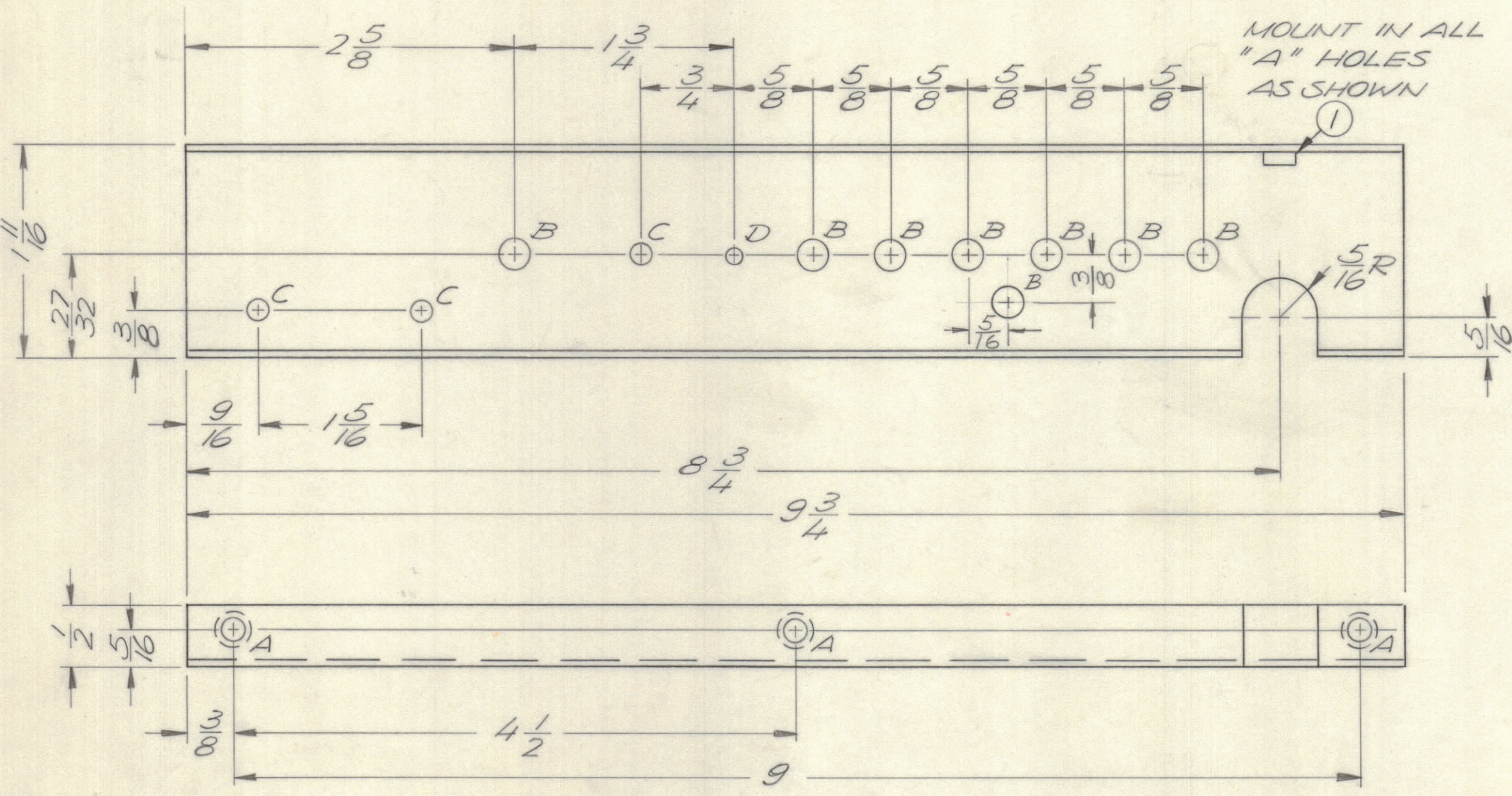
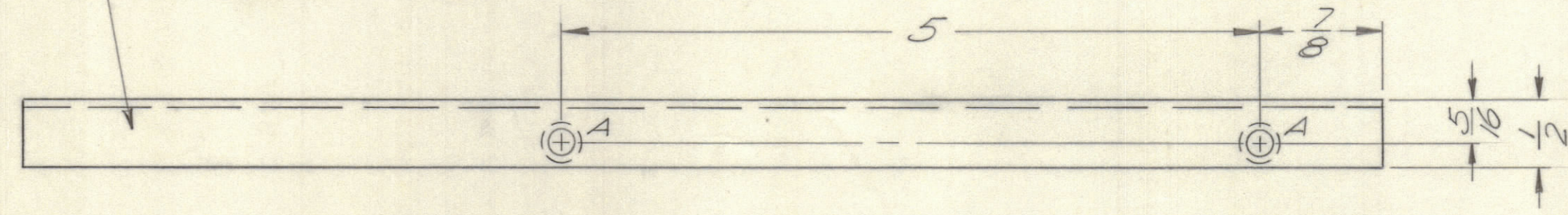


REVISIONS							
E.M.N.NO	DRAFT	CHKD	ZONE	LTR	DESCRIPTION	DATE	APPROVED
	5A			XI	REDRAWN WITH REV.	8/21/70	
	(D)			X	ORIGINAL RELEASE FOR PRODUCTION	10/15/70	
2007B	JM	JM		A	Add 1 B Hole	11/2/70	JM

MARK TMC PART NUMBER
1/8 HIGH GOTHIC WITH LATEST
REVISION LETTER



HOLE LEGEND:
 A - .191 - .194 DIA. (5 REQ.)
 B - 1/4 DIA. (8 REQ.)
 C - 11/64 DIA. (3 REQ.)
 D - 9/64 DIA. (1 REQ.)

UNLESS OTHERWISE SPECIFIED:
 1. USE MATERIAL THICKNESS FOR MAXIMUM RADIUS ON ALL BENDS.
 2. ALL ANGULAR BENDS 90 DEGREES.
 3. REMOVE ALL BURRS AND SHARP EDGES.
 4. MOUNT INSERTS AFTER FINISHING.

REF. LD 2426

QTY. REQ.	ITEM	PART NO.	DESCRIPTION	SYMBOL
5	1	NT129-0632-4	NUT, ROUND, SWAGE TYPE	A

F. BUDETTI LIST OF MATERIAL			
FINAL APPROVAL	DATE	THE TECHNICAL MATERIEL CORP. MAMARONECK, NEW YORK	
MECH. DES.	DATE		
ELECT. DES.	DATE		
CHECKED	DATE		
DRAWN	DATE	BRACKET, FEED THRU	

1	TLAM-1K	ASS'Y NO.
QTY / UNIT	MODEL USED ON	
APPLICATION		
CODE		

NOTICE TO PERSONS RECEIVING THIS DRAWING
 THE TECHNICAL MATERIEL CORPORATION claims proprietary right in the material disclosed hereon. This drawing is issued in confidence for engineering information only and may not be reproduced or used to manufacture anything shown hereon without permission from THE TECHNICAL MATERIEL CORPORATION to the user. This drawing is loaned for mutual assistance and is subject to recall at any time.

UNLESS OTHERWISE SPECIFIED DIMENSIONS ARE IN INCHES AND INCLUDE CHEMICALLY APPLIED OR PLATED FINISHES

TOLERANCES ON
 DECIMALS .X ± .05
 .XX ± .01
 .XXX ± .005

FRACTIONS ± 1/64
 ANGLES ± 0° -30'

MATERIAL .064 ALUM
 5052 - H32

FINISH S404 YEL. IRIDITE

SIZE	CODE IDENT NO.	DWG NO.	ISSUE
C	82679	MS 5667	A

SCALE 1:1 SHEET OF

MS 5667 A B

A