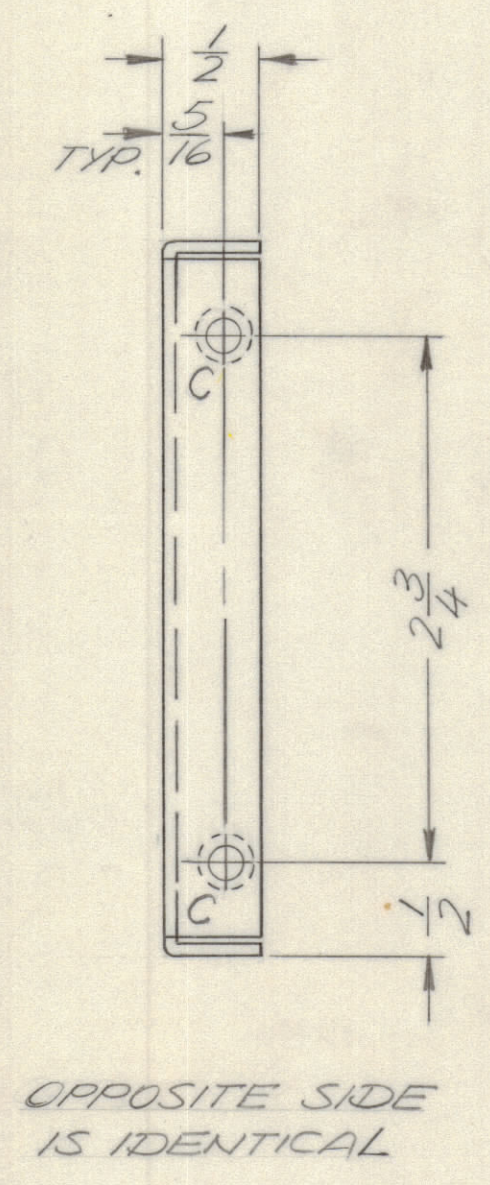
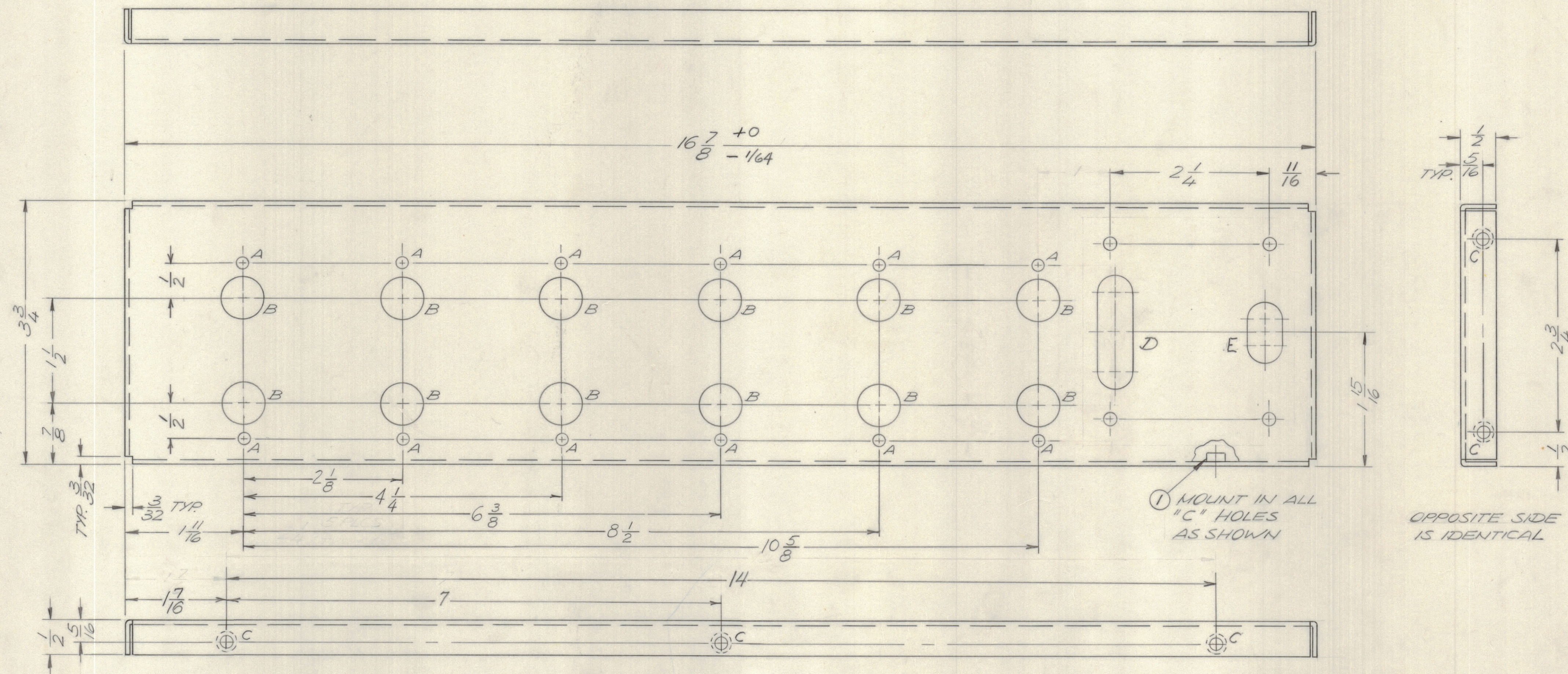


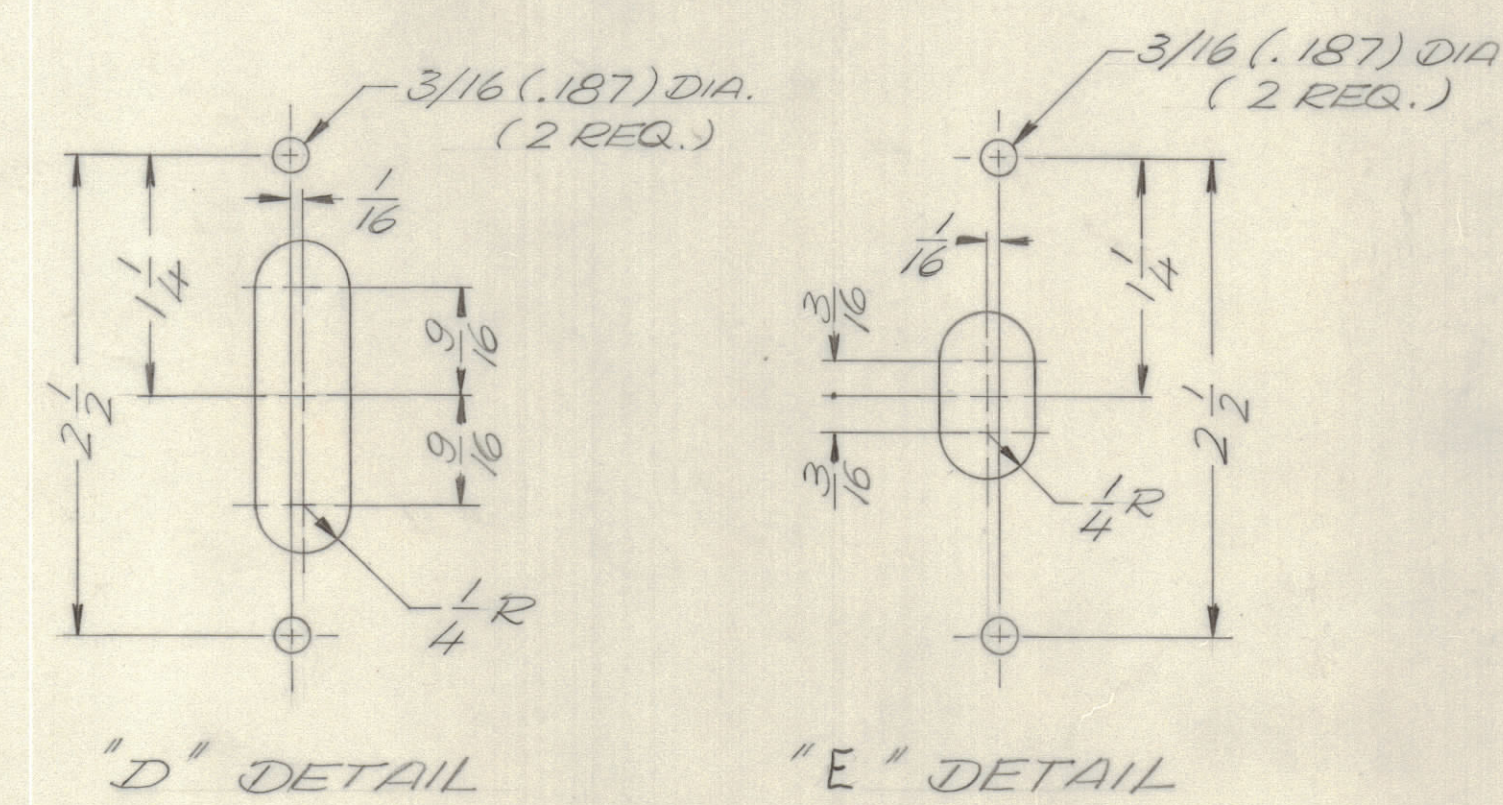
REVISIONS					
E.M.N.O	DRAFT	CHKD	ZONE	LTR	APPROVED
	02			0	ORIGINAL RELEASE FOR PRODUCTION
					DATE 11/30/70



HOLE LEGEND

A - 11/64 DIA.	(19 REQ.)
B - 5/8 DIA.	(12 REQ.)
C - .191-.194 DIA.	(7 REQ.)
D - SEE DETAIL	(1 REQ.)
E - SEE DETAIL	(1 REQ.)

- UNLESS OTHERWISE SPECIFIED:**
- USE MATERIAL THICKNESS FOR MAXIMUM RADIUS ON ALL BENDS.
 - ALL ANGULAR BENDS 90 DEGREES.
 - REMOVE ALL BURRS AND SHARP EDGES.
 - MOUNT INSERTS AFTER FINISHING.



"D" DETAIL "E" DETAIL

1	LPFB-2	
QTY / UNIT	MODEL USED ON	ASSY NO.
APPLICATION		
CODE		
NOTICE TO PERSONS RECEIVING THIS DRAWING		
THE TECHNICAL MATERIEL CORPORATION claims proprietary right in the material disclosed hereon. This drawing is issued in confidence for engineering information only and may not be reproduced or used to manufacture anything shown hereon without permission from THE TECHNICAL MATERIEL CORPORATION to the user. This drawing is loaned for mutual assistance and is subject to recall at any time.		

7-1 NT129-0632-4		NUT, ROUND, SWAGE TYPE		C
QTY. REQ.	ITEM	PART NO.	DESCRIPTION	SYMBOL
F. BLUDETTI LIST OF MATERIAL				
FINAL APPROVAL	DATE	THE TECHNICAL MATERIEL CORP.		
MECH. DES.	DATE	MAMARONECK, NEW YORK		
ELECT. DES.	DATE	PLATE, CTR.		
CHECKED	DATE	SIZE	CODE IDENT NO.	DWG NO.
DRAWN	DATE	D	82679	MS5688
MATERIAL .064 ALUM.		SCALE	1:1	SHEET OF
FINISH 5052-H32				1
S404 YEL. IRIDITE				1