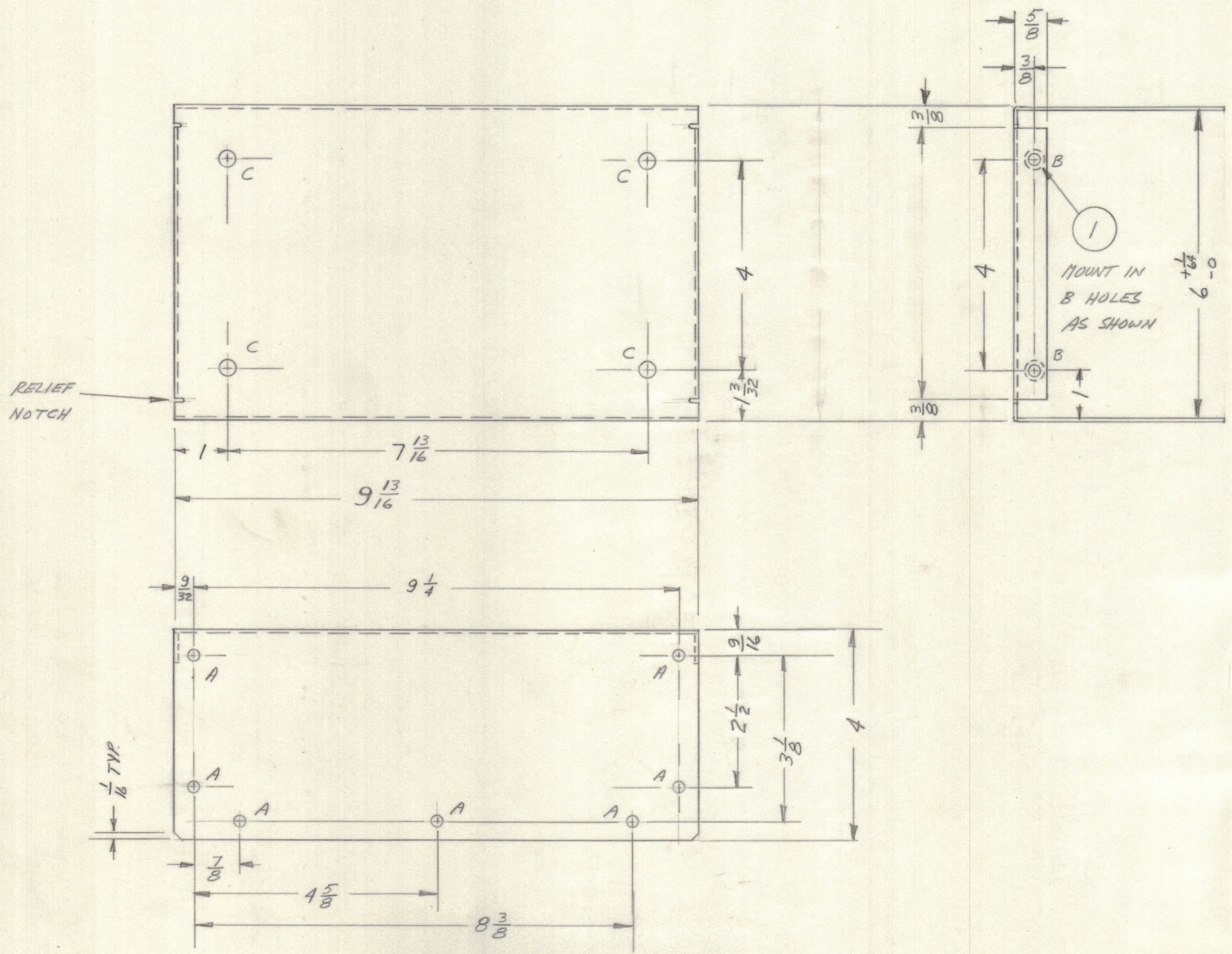


REVISIONS							
E.M.N.NO	DRAFT	CHKD	ZONE	LTR	DESCRIPTION	DATE	APPROVED
		KD		Ø	ORIGINAL RELEASE FOR PRODUCTION	11-24-69	



UNLESS OTHERWISE SPECIFIED:

1. USE MATERIAL THICKNESS FOR MAXIMUM RADIUS ON ALL BENDS.
2. ALL ANGULAR BENDS 90 DEGREES.
3. REMOVE ALL BURRS AND SHARP EDGES.
4. MOUNT INSERTS AFTER FINISHING.

FINISH NOTES:

1. S404 - IRIDITE 14-2 AL-COAT.
2. S114 - ZINC CHROMATE PRIMER
3. S115 - SMOOTH GRAY ENAMEL OR PRIME AND PAINT PER CUSTOMER'S SPECIFICATIONS

HOLE	DESC.	REQ.
A	13/64 DIA	14
B	.221-.224 DIA	4
C	5/16 DIA.	4

QTY.	ITEM	PART NO.	DESCRIPTION	SYMBOL
4	1	NT129-0832-4	NUT PLN SPLINE	

BUDETTI LIST OF MATERIAL

FINAL APPROVAL	DATE	THE TECHNICAL MATERIEL CORP. MAMARONECK, NEW YORK COVER, T/R RELAY								
MECH. DES.	DATE									
ELECT. DES.	DATE									
CHECKED	DATE									
DRAWN	DATE	<table border="1"> <tr> <td>SIZE</td> <td>CODE IDENT NO.</td> <td>DWG NO.</td> <td>ISSUE</td> </tr> <tr> <td>C</td> <td>82679</td> <td>MS 5703</td> <td>Ø</td> </tr> </table>	SIZE	CODE IDENT NO.	DWG NO.	ISSUE	C	82679	MS 5703	Ø
SIZE	CODE IDENT NO.	DWG NO.	ISSUE							
C	82679	MS 5703	Ø							

1	PALA-10K	AX5104
QTY / UNIT	MODEL USED ON	ASS'Y NO.
APPLICATION		
CODE		
NOTICE TO PERSONS RECEIVING THIS DRAWING THE TECHNICAL MATERIEL CORPORATION claims proprietary right in the material disclosed hereon. This drawing is issued in confidence for engineering information only and may not be reproduced or used to manufacture anything shown hereon without permission from THE TECHNICAL MATERIEL CORPORATION to the user. This drawing is loaned for mutual assistance and is subject to recall at any time.		

UNLESS OTHERWISE SPECIFIED DIMENSIONS ARE IN INCHES AND INCLUDE CHEMICALLY APPLIED OR PLATED FINISHES

TOLERANCES ON

DECIMALS	FRACTIONS
.X ± .05	± 1/64
.XX ± .01	ANGLES
.XXX ± .005	± 0° -30'

MATERIAL .081 AWM
SD52-H32

FINISH