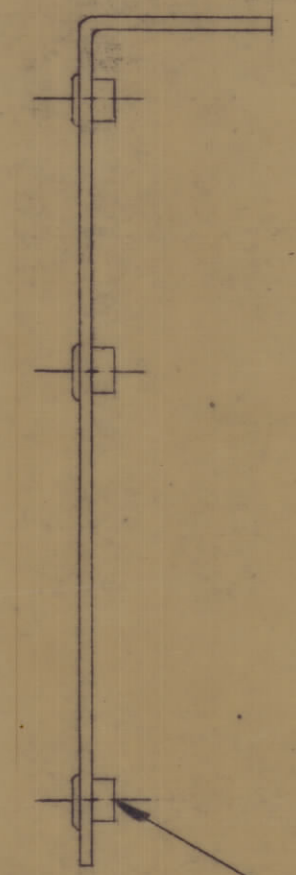
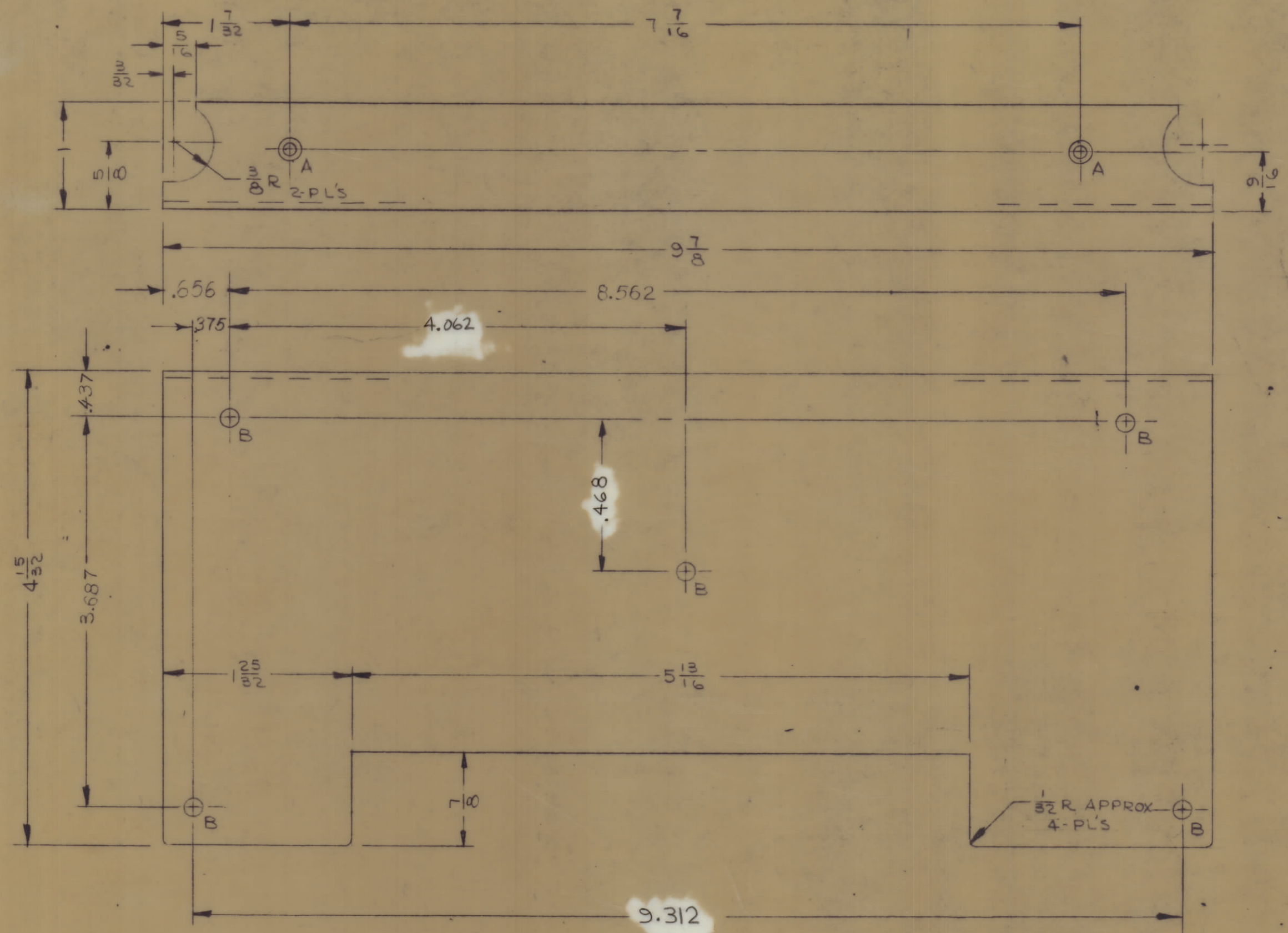


REVISIONS						
ZONE	LTR	DESCRIPTION	DATE	E.M.N.NO	DRAFT	CHKD APPD
	X	EXPERIMENTAL RELEASE	11-24-69		KD	
	0	ORIGINAL RELEASE FOR PRODUCTION	11-26-69		KD	



(1) MOUNT IN ALL "B" HOLES

HOLE LEGEND		
HOLE	DESCRIPTION	REQ
A	.120 DIA & C'SINK 82° TO .230 DIA	2
B	.189 DIA	5

2	HFSR-4	
QTY / UNIT	MODEL USED ON	ASS'Y NO.
APPLICATION		
	CODE	
NOTICE TO PERSONS RECEIVING THIS DRAWING		
THE TECHNICAL MATERIEL CORPORATION claims proprietary right in the material disclosed hereon. This drawing is issued in confidence for engineering information only and may not be reproduced or used to manufacture anything shown hereon without permission from THE TECHNICAL MATERIEL CORPORATION to the user. This drawing is loaned for mutual assistance and is subject to recall at any time.		

UNLESS OTHERWISE SPECIFIED DIMENSIONS ARE IN INCHES AND INCLUDE CHEMICALLY APPLIED OR PLATED FINISHES	
TOLERANCES ON	
DECIMALS	FRACTIONS
.X ± .05	± 1/64
.XX ± .01	ANGLES
.XXX ± .005	± 0°-30'
MATERIAL	
.063 THK ALUMINUM 5052-H32	
FINISH	
YELLOW IRIDITE S404	

5	1	TE164-6	NUT, PLAIN	B
QTY. REQ.	ITEM	PART NO.	DESCRIPTION	SYMBOL
LIST OF MATERIAL				
FINAL APPROVAL <i>[Signature]</i> DATE 12-1-69				
MECH. DES. <i>[Signature]</i> DATE 11-26-69				
ELECT. DES. DATE				
CHECKED <i>[Signature]</i> DATE 11/25/69				
DRAWN Deierlein DATE 11-24-69				
THE TECHNICAL MATERIEL CORP. MAMARONECK, NEW YORK				
SHIELD - P.C. CARD				
SIZE	CODE IDENT. NO.	DWG NO.	ISSUE	
C	82679	MS5705	0	
SCALE	SHEET			OF