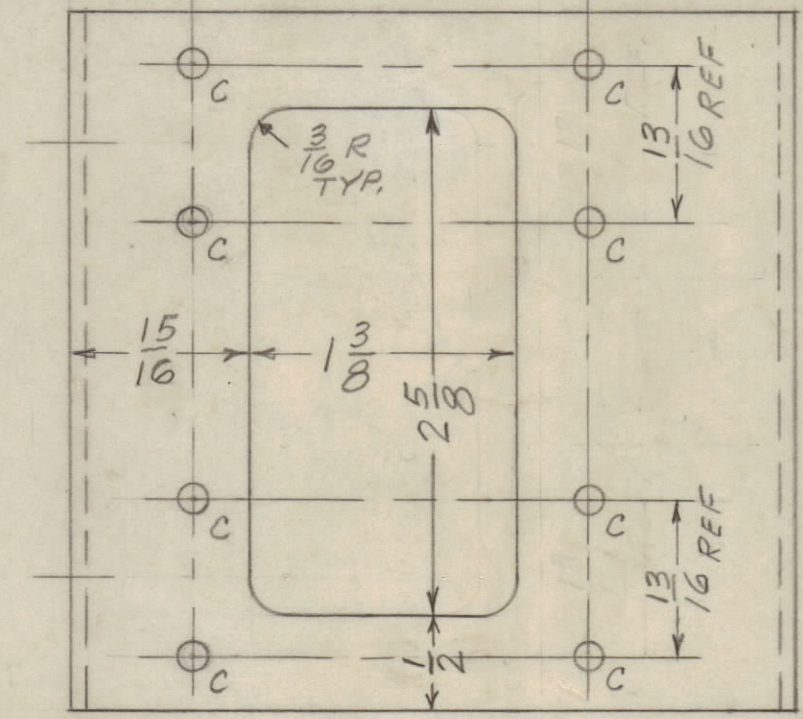
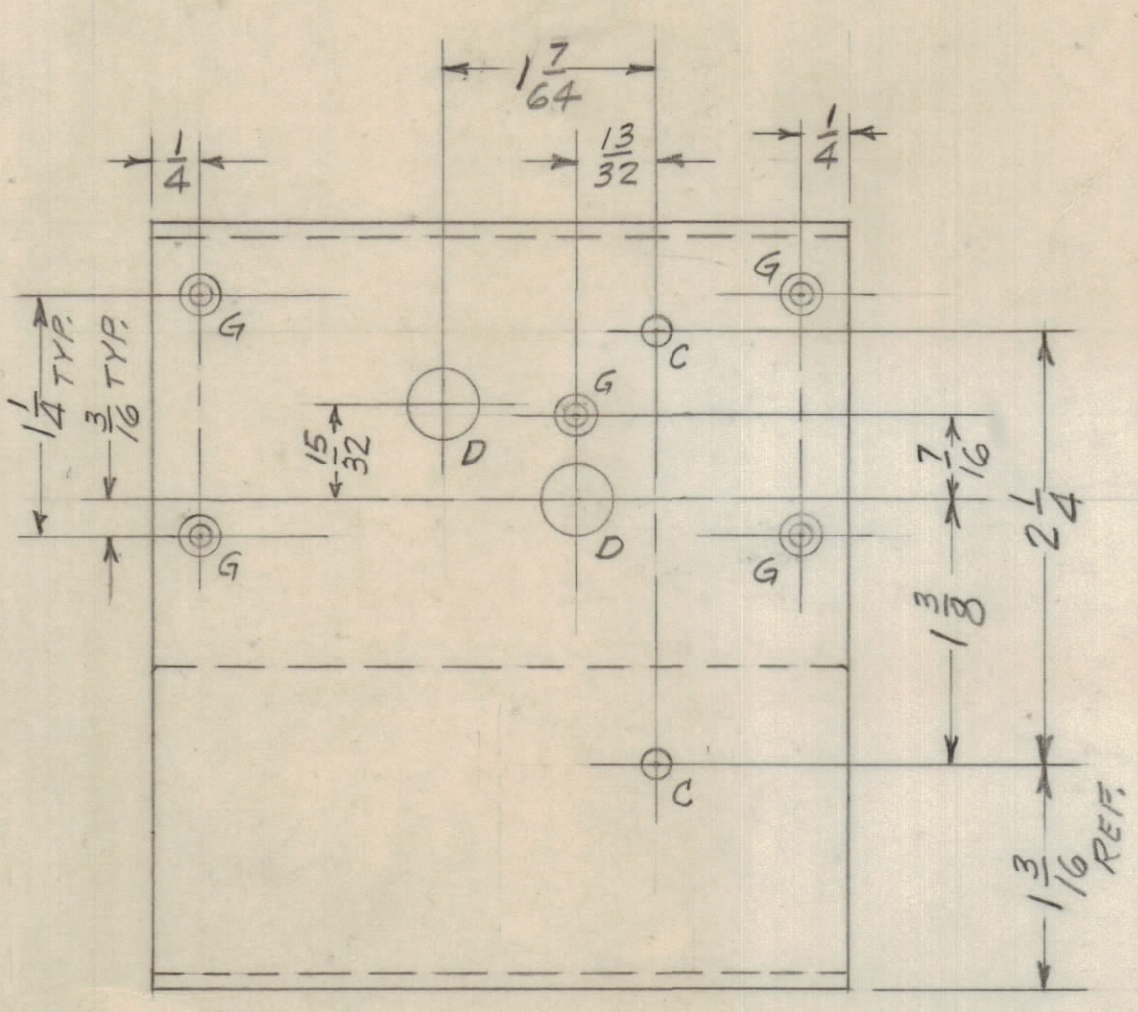
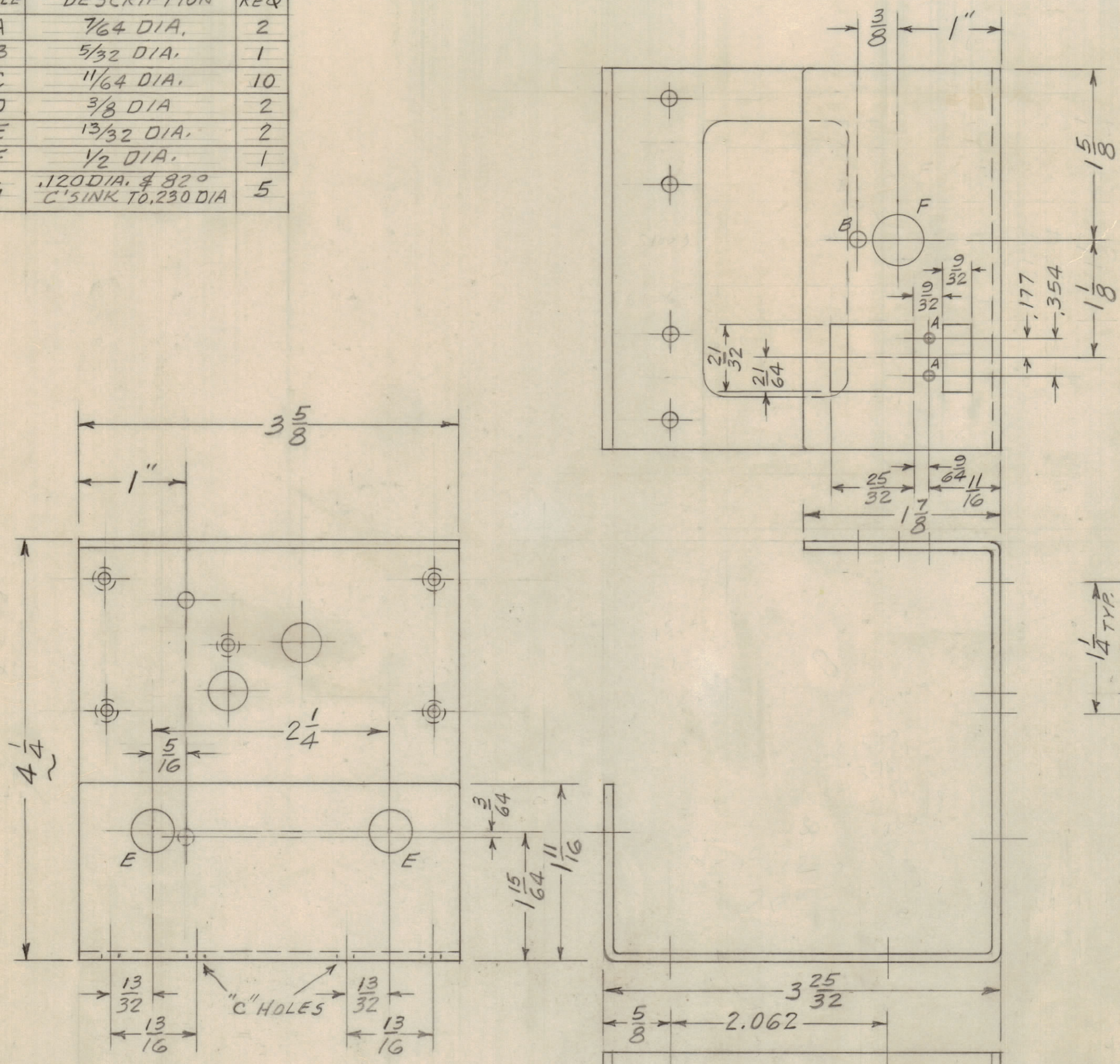


HOLE	DESCRIPTION	REQ
A	7/64 DIA.	2
B	5/32 DIA.	1
C	11/64 DIA.	10
D	3/8 DIA.	2
E	13/32 DIA.	2
F	1/2 DIA.	1
G	.120 DIA. \pm .020 C'SINK TO .230 DIA	5

REVISIONS							
E.M.N.NO	DRAFT	CHKD	ZONE	LTR	DESCRIPTION	DATE	APPROVED
					REVISED		
	CS				ORIGINAL RELEASE	5/24/73	



QTY / UNIT	MODEL USED ON	ASS'Y NO.
	CMRA-4	
APPLICATION		
	CODE	

NOTICE TO PERSONS RECEIVING THIS DRAWING
 THE TECHNICAL MATERIEL CORPORATION claims proprietary right in the material disclosed hereon. This drawing is issued in confidence for engineering information only and may not be reproduced or used to manufacture anything shown hereon without permission from THE TECHNICAL MATERIEL CORPORATION to the user. This drawing is loaned for mutual assistance and is subject to recall at any time.

UNLESS OTHERWISE SPECIFIED DIMENSIONS ARE IN INCHES AND INCLUDE CHEMICALLY APPLIED OR PLATED FINISHES

TOLERANCES ON
 DECIMALS: .X \pm .05, .XX \pm .01, .XXX \pm .005
 FRACTIONS: \pm 1/64, ANGLES: \pm 0° -30'

MATERIAL .081 ALUMINUM 5052 H32
 FINISH 5404 YELLOW IRIDITE

QTY. REQ.	ITEM	PART NO.	DESCRIPTION	SYMBOL
LIST OF MATERIAL				
FINAL APPROVAL: [Signature] DATE: 5/23/73 MECH. DES. DATE ELECT. DES. DATE CHECKED DATE DRAWN: D.A.C. DATE: 5-23-69				
THE TECHNICAL MATERIEL CORP. MAMARONECK, NEW YORK BRACKET, MOUNTING. AUTO. SWITCH				
SIZE	CODE	IDENT NO.	DWG NO.	ISSUE
C		82679	MS 5916	[Signature]
SCALE			SHEET	OF

- UNLESS OTHERWISE SPECIFIED:
- USE MATERIAL THICKNESS FOR MAXIMUM RADIUS ON ALL BENDS.
 - ALL ANGULAR BENDS 90 DEGREES.
 - REMOVE ALL BURRS AND SHARP EDGES.
 - MOUNT INSERTS AFTER FINISHING.

MS 5916