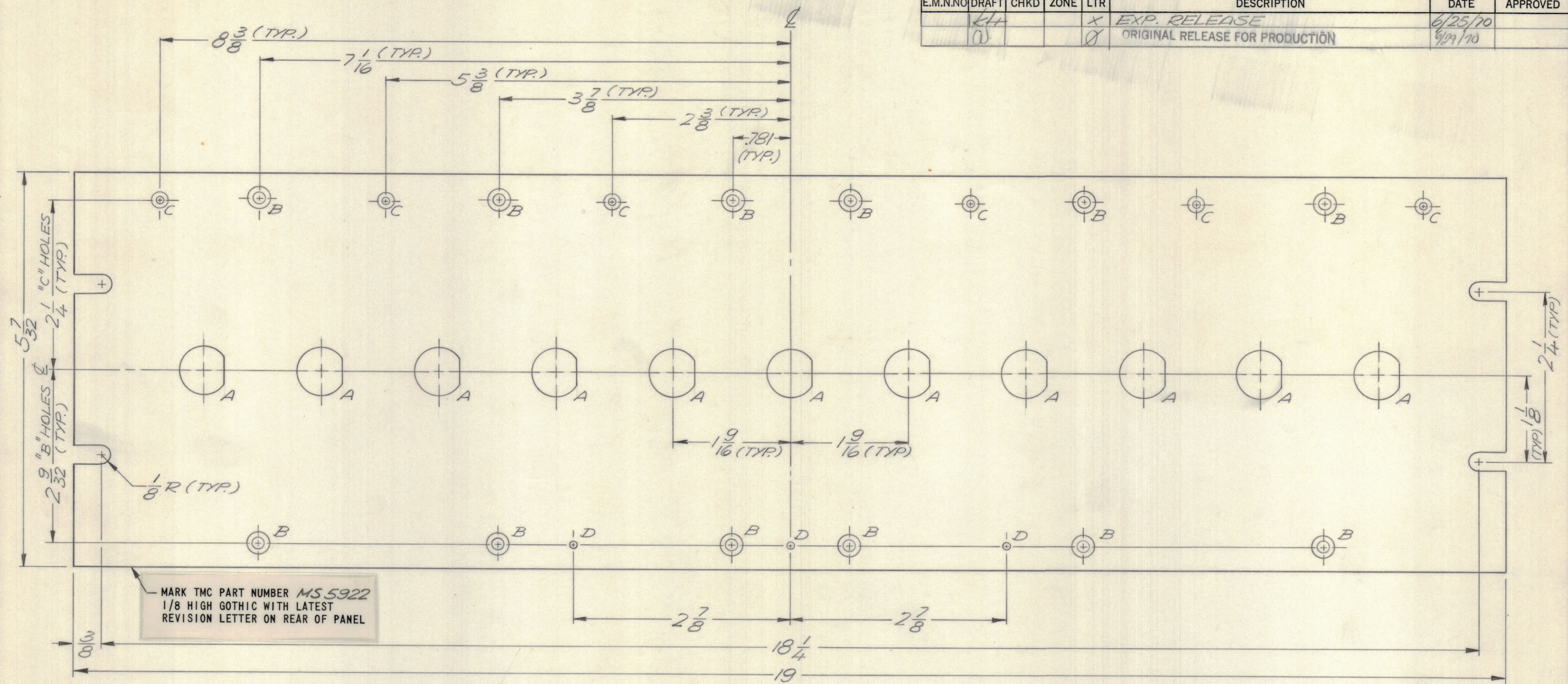


REVISIONS						DATE	APPROVED
E.M.N.NO	DRAFT	CHKD	ZONE	LTR	DESCRIPTION		
	1/1			X	EXP. RELEASE	6/25/70	
	2			Ø	ORIGINAL RELEASE FOR PRODUCTION	6/29/70	

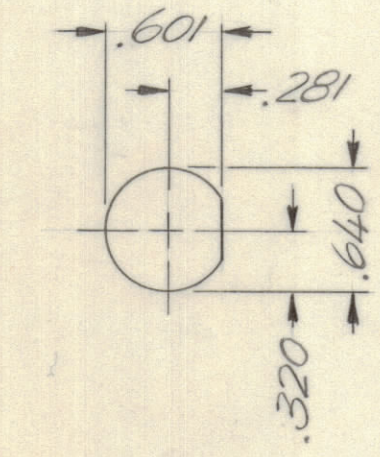


FRONT OF PANEL

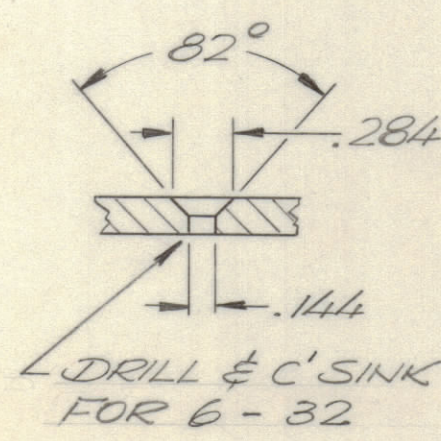
HOLE LEGEND

- A - SEE DETAIL (11 REQ.)
- B - SEE DETAIL (12 REQ.)
- C - SEE DETAIL (6 REQ.)
- D - # 47 DRILL (.078) DIA (3 REQ.)

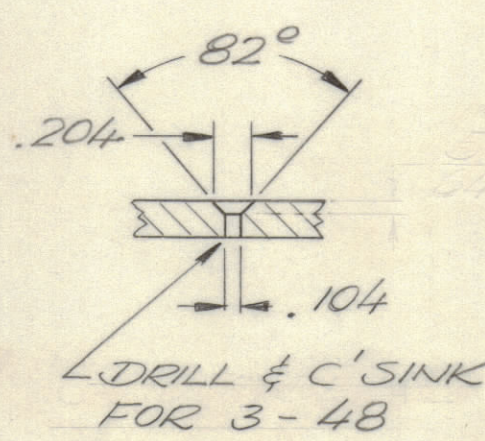
FINISH NOTES:
 1. S404 - IRIDITE 14-2 AL-COAT.
 2. S114 - ZINC CHROMATE PRIMER } FRONT AND
 3. S115 - SMOOTH GRAY ENAMEL } EDGES ONLY
 OR
 PRIME AND PAINT PER CUSTOMER'S SPECIFICATIONS



"A" DETAIL



"B" DETAIL



"C" DETAIL

1	JPP-6C6X11	
QTY / UNIT	MODEL USED ON	ASS'Y NO.
APPLICATION		
	CODE	

NOTICE TO PERSONS RECEIVING THIS DRAWING
 THE TECHNICAL MATERIEL CORPORATION claims proprietary right in the material disclosed hereon. This drawing is issued in confidence for engineering information only and may not be reproduced or used to manufacture anything shown hereon without permission from THE TECHNICAL MATERIEL CORPORATION to the user. This drawing is loaned for mutual assistance and is subject to recall at any time.

UNLESS OTHERWISE SPECIFIED DIMENSIONS ARE IN INCHES AND INCLUDE CHEMICALLY APPLIED OR PLATED FINISHES

TOLERANCES ON
 DECIMALS FRACTIONS
 .X ± .05 ± 1/64
 .XX ± .01 ANGLS
 .XXX ± .005 ± 0° -30'

MATERIAL 3/16THK ALUM.
 2024 - T3

FINISH SEE NOTE

QTY. REQ.	ITEM	PART NO.	DESCRIPTION	SYMBOL
LIST OF MATERIAL				
THE TECHNICAL MATERIEL CORP. MAMARONECK, NEW YORK				
PANEL, FRONT, MACHINING JPP				
MATERIAL		SIZE	CODE IDENT NO.	DWG NO.
		C	82679	MS 5922
		SCALE 1:1		SHEET OF

MS 5922