

4

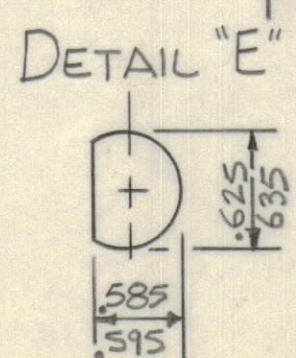
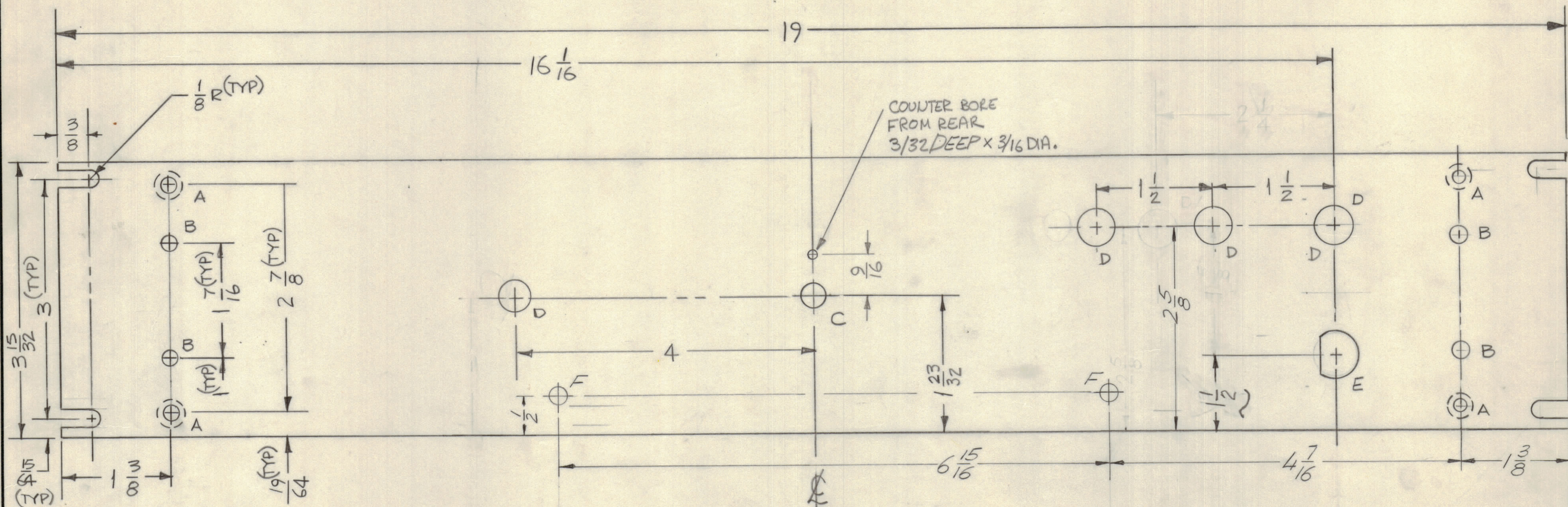
3

2

1

REVISIONS					DATE	APPROVED
E.M.N.NO	DRAFT	CHKD	ZONE	LTR	DESCRIPTION	
	0			Ø	ORIGINAL RELEASE FOR PRODUCTION	3/9/71 G.E.S.

Hole	DESCRIPTION	Req
A	.196 DIA & C'SINK TO .390 DIA REAR	4
B	13/64 DIA.	4
C	7/16 DIA	1
D	15/32 DIA	4
E	SEE DETAIL	1
F	15/64 DIA.	2



MACHINING:

- MILL ALL EDGES.
- Holes must be drilled, unless otherwise specified.
- LATERAL BOW OF PANEL MUST BE KEPT TO .031 TOLERANCE.
- PANEL MUST BE FREE OF ALL MACHINING MARKS, GOUGES AND SCRATCHES. IF NECESSARY, SAND FRONT OF PANEL WITH NO. 120 GRIT SANDPAPER.

FINISH NOTES:

- S404 - IRIDITE 14-2 AL-COAT.
 - S114 - ZINC CHROMATE PRIMER } FRONT AND
 - S115 - SMOOTH GRAY ENAMEL } EDGES ONLY
- OR
PRIME AND PAINT PER CUSTOMER'S SPECIFICATIONS

QTY / UNIT	MODEL USED ON	ASS'Y NO.
	AX5128	
APPLICATION		
	CODE	

NOTICE TO PERSONS RECEIVING THIS DRAWING
 THE TECHNICAL MATERIEL CORPORATION claims proprietary right in the material disclosed hereon. This drawing is issued in confidence for engineering information only and may not be reproduced or used to manufacture anything shown hereon without permission from THE TECHNICAL MATERIEL CORPORATION to the user. This drawing is loaned for mutual assistance and is subject to recall at any time.

Ref LD 2438

QTY. REQ.	ITEM	PART NO.	DESCRIPTION	SYMBOL
S. DE MARCO LIST OF MATERIAL				
FINAL APPROVAL		DATE	THE TECHNICAL MATERIEL CORP. MAMARONECK, NEW YORK	
MECH. DES.		DATE		
ELECT. DES.		DATE		
CHECKED		DATE		
DRAWN		DATE	PANEL, FRONT	
SIZE	CODE IDENT NO.	DWG NO.	ISSUE	
C	82679	MS 5934	Ø	
SCALE			SHEET	OF

4

3

2

1

MS5934

A