

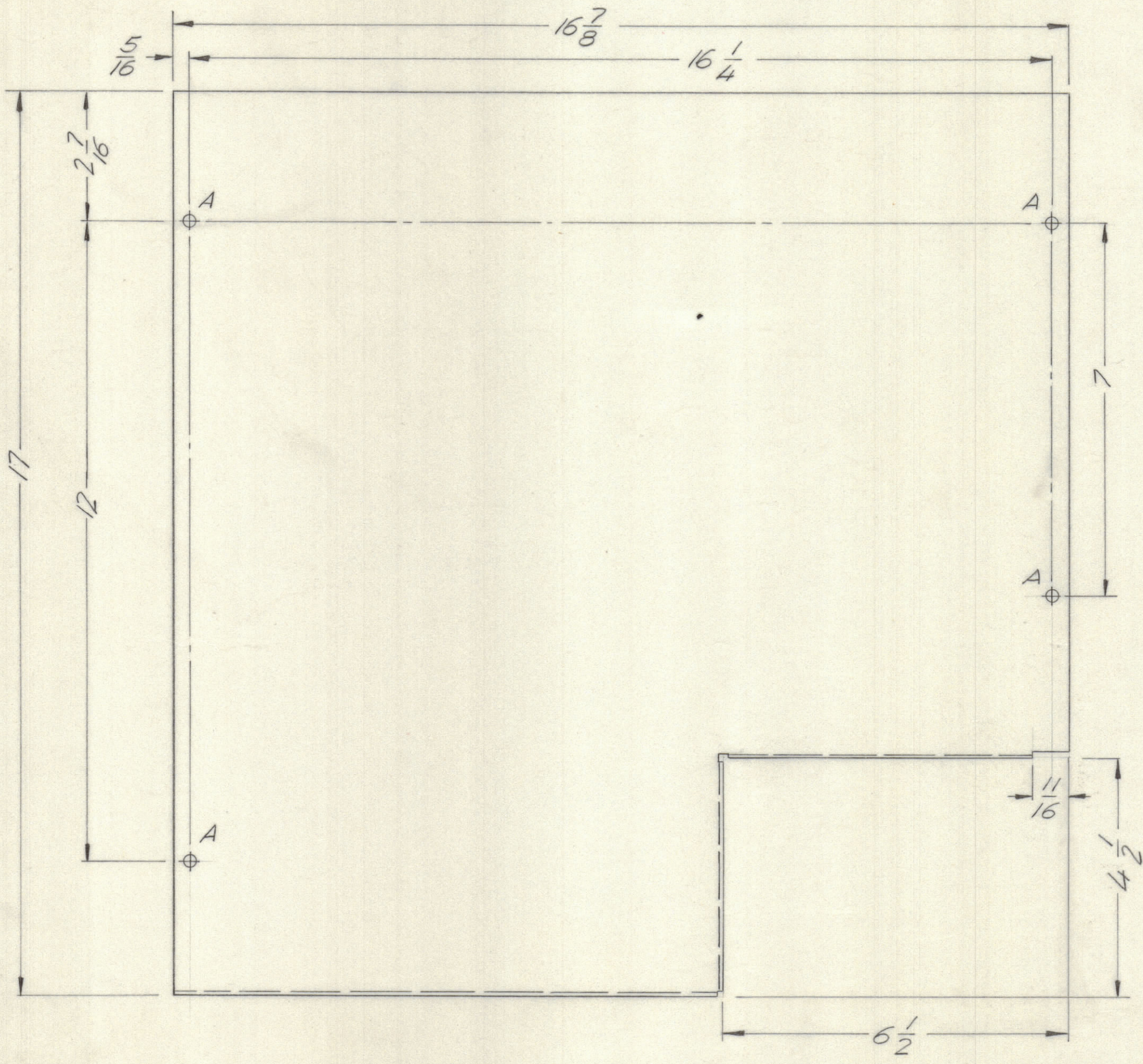
4

3

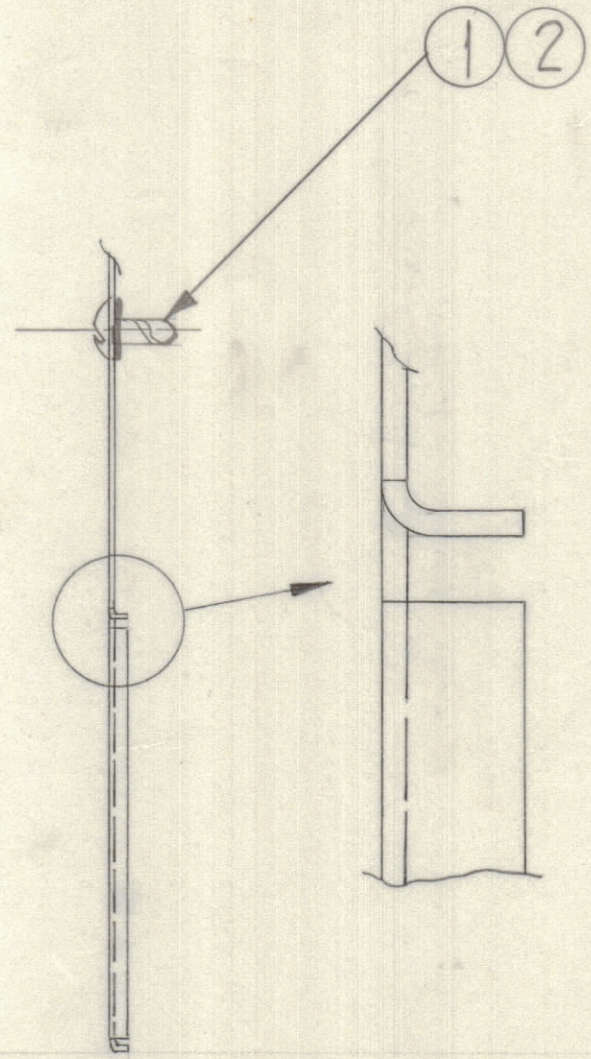
2

1

REVISIONS							
E.M.N.NO	DRAFT	CHKD	ZONE	LTR	DESCRIPTION	DATE	APPROVED
	00			Ø	ORIGINAL RELEASE FOR PRODUCTION	3/31/71	P.E.B.



HOLE	DESCRIPTION	QTY.
A	1/4 DIA	4



1/4 APPROX.

QTY. REQ.	ITEM	PART NO.	DESCRIPTION	SYMBOL
4	2	FS110-1	STUD, TURNLOCK	A
4	1	FS109-3	RING, RETAINING	A

S. DE MARCO LIST OF MATERIAL

FINAL APPROVAL <i>S. De Marco</i>	DATE 3-30-71	<b>THE TECHNICAL MATERIEL CORP.</b> MAMARONECK, NEW YORK
MECH. DES. <i>R. Upp</i>	DATE 1-26-71	
ELECT. DES.	DATE	
CHECKED	DATE	
DRAWN <i>GE</i>	DATE 1/14/71	COVER, TOP

QTY / UNIT	MODEL USED ON	ASS'Y NO.
	AX5128	
APPLICATION		
	CODE	

NOTICE TO PERSONS RECEIVING THIS DRAWING  
 THE TECHNICAL MATERIEL CORPORATION claims proprietary right in the material disclosed hereon. This drawing is issued in confidence for engineering information only and may not be reproduced or used to manufacture anything shown hereon without permission from THE TECHNICAL MATERIEL CORPORATION to the user. This drawing is loaned for mutual assistance and is subject to recall at any time.

UNLESS OTHERWISE SPECIFIED DIMENSIONS ARE IN INCHES AND INCLUDE CHEMICALLY APPLIED OR PLATED FINISHES	
TOLERANCES ON	
DECIMALS	FRACTIONS
.X ± .05	± 1/64
.XX ± .01	ANGLES
.XXX ± .005	± 0° -30'
MATERIAL	.051 ALUMINUM
FINISH	S404 VEL. IRIDITE

SIZE	CODE IDENT NO.	DWG NO.	ISSUE
C	82679	MS5938	Ø
SCALE	1/2	SHEET	OF

- UNLESS OTHERWISE SPECIFIED:
- USE MATERIAL THICKNESS FOR MAXIMUM RADIUS ON ALL BENDS.
  - ALL ANGULAR BENDS 90 DEGREES.
  - REMOVE ALL BURRS AND SHARP EDGES.
  - MOUNT INSERTS AFTER FINISHING.

4

3

2

1

MS5938