

4

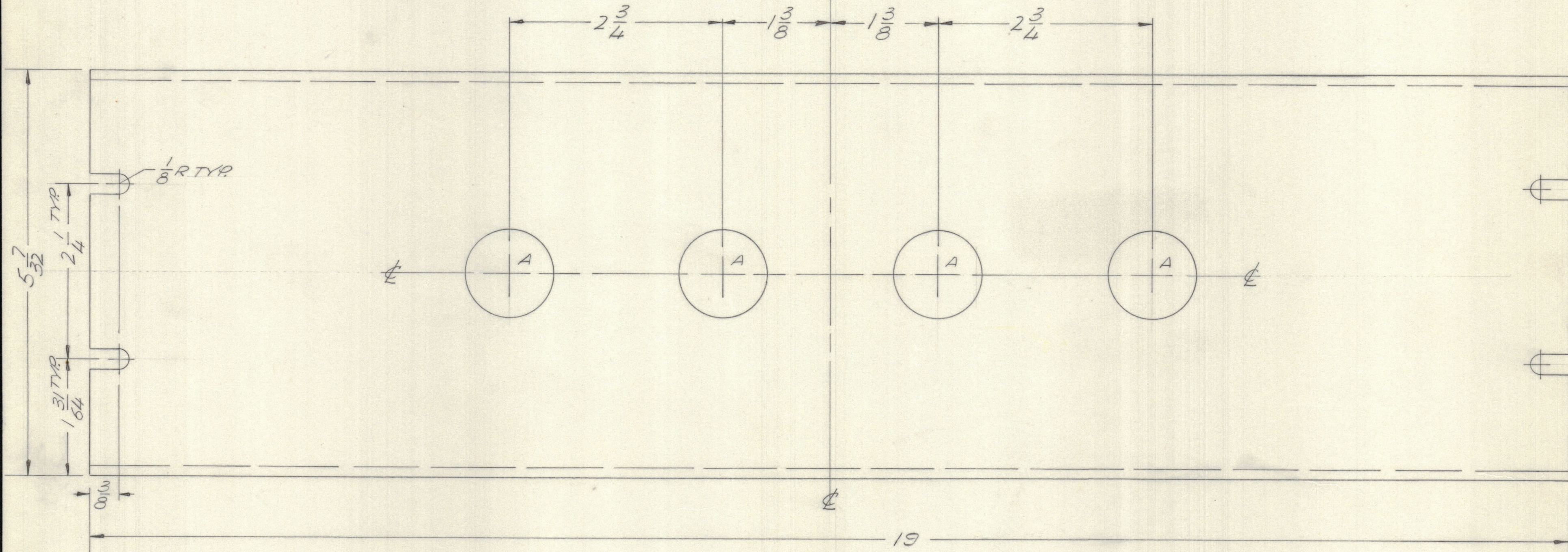
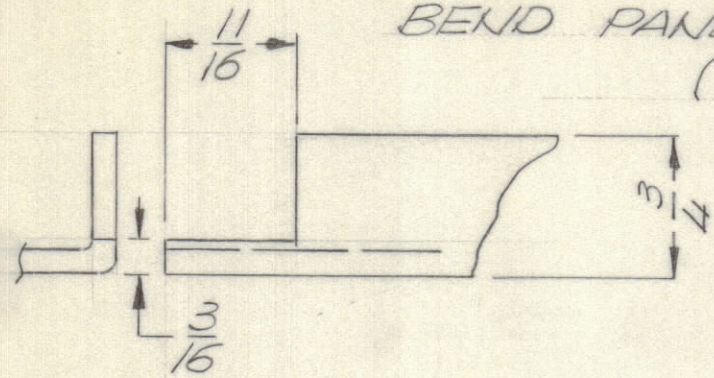
3

2

1

REVISIONS					DATE	APPROVED
E.M.N.NO	DRAFT	CHKD	ZONE	LTR	DESCRIPTION	
	0		0	0	ORIGINAL RELEASE FOR PRODUCTION	01/71 R.E.A.

BEND PANEL BEFORE MACHINING
(4 CORNERS TYP.)



HOLE DESCRIPTION REQ.
A — 1 1/16 DIA. — 4

FINISH NOTES:

- S404 - IRIDITE 14-2 AL-COAT.
- S114 - ZINC CHROMATE PRIMER } FRONT AND EDGES ONLY
- S115 - SMOOTH GRAY ENAMEL } OR PRIME AND PAINT PER CUSTOMER'S SPECIFICATIONS

UNLESS OTHERWISE SPECIFIED:

- USE MATERIAL THICKNESS FOR MAXIMUM RADIUS ON ALL BENDS.
- ALL ANGULAR BENDS 90 DEGREES.
- REMOVE ALL BURRS AND SHARP EDGES.
- MOUNT INSERTS AFTER FINISHING.

GPTM 10 KLA 2 LPFA-1		
QTY / UNIT	MODEL USED ON	ASS'Y NO.
APPLICATION		
CODE		

NOTICE TO PERSONS RECEIVING THIS DRAWING
THE TECHNICAL MATERIEL CORPORATION claims proprietary right in the material disclosed hereon. This drawing is issued in confidence for engineering information only and may not be reproduced or used to manufacture anything shown hereon without permission from THE TECHNICAL MATERIEL CORPORATION to the user. This drawing is loaned for mutual assistance and is subject to recall at any time.

REF. LD. 2449		QTY. REQ.	ITEM	PART NO.	DESCRIPTION	SYMBOL
UNLESS OTHERWISE SPECIFIED DIMENSIONS ARE IN INCHES AND INCLUDE CHEMICALLY APPLIED OR PLATED FINISHES		FINAL APPROVAL	MECH. DES.	ELECT. DES.	CHECKED	DRAWN
TOLERANCES ON		DATE		DATE		
DECIMALS		DATE		DATE		
X ± .05		DATE		DATE		
XX ± .01		DATE		DATE		
XXX ± .005		DATE		DATE		
ANGLES		DATE		DATE		
± 0° -30'		DATE		DATE		
MATERIAL 1/8 ALUM.		DATE		DATE		
5052 H32		DATE		DATE		
FINISH		DATE		DATE		
AS NOTED		DATE		DATE		
F. BUDETTI					LIST OF MATERIAL	
THE TECHNICAL MATERIEL CORP.					MAMARONECK, NEW YORK	
PANEL, INDICATOR						
SIZE	CODE	IDENT NO.	DWG NO.	ISSUE		
C	82679	MS 5959		Ø		
SCALE 1:1				SHEET OF		

4

3

2

1