

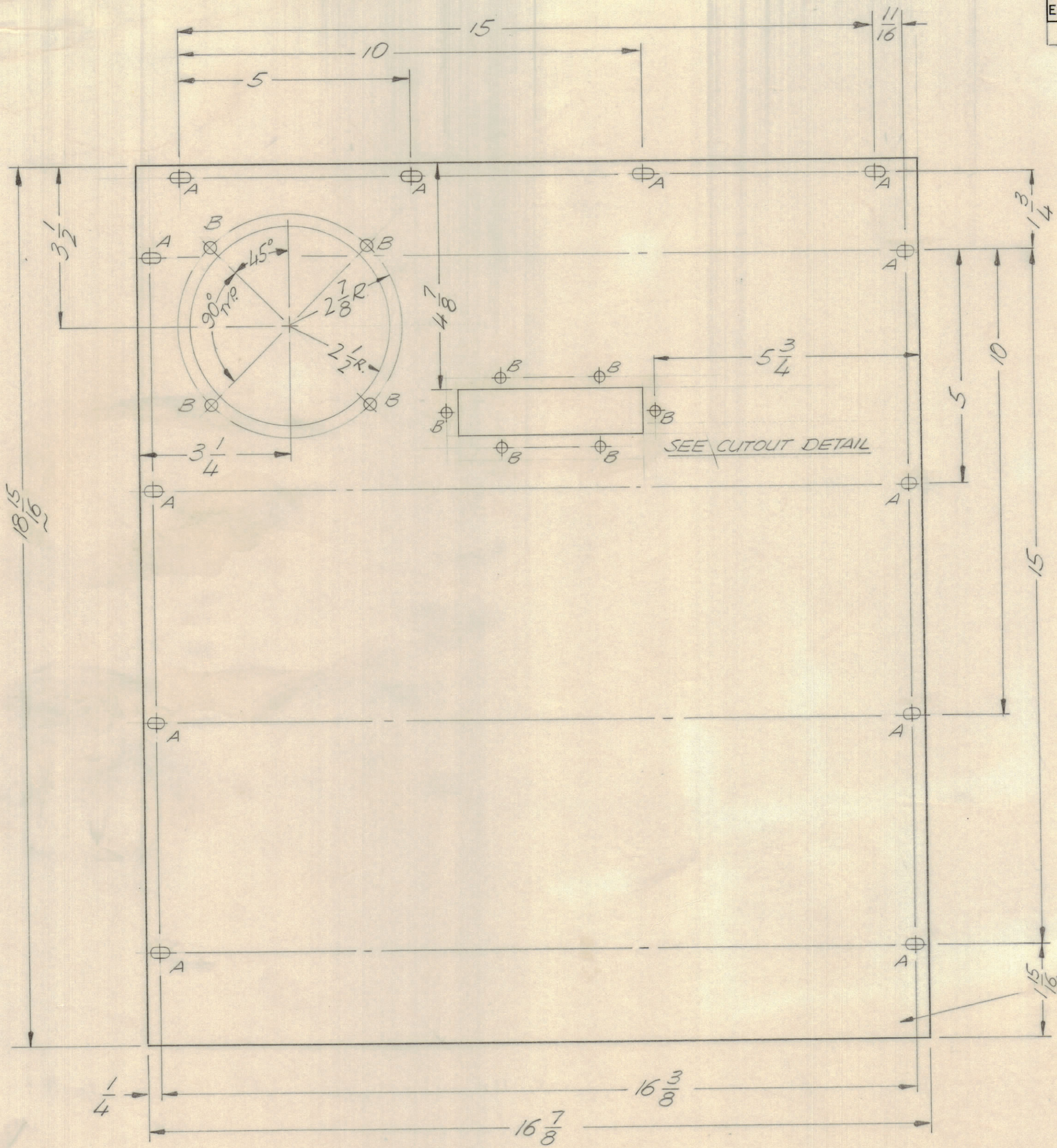
4

3

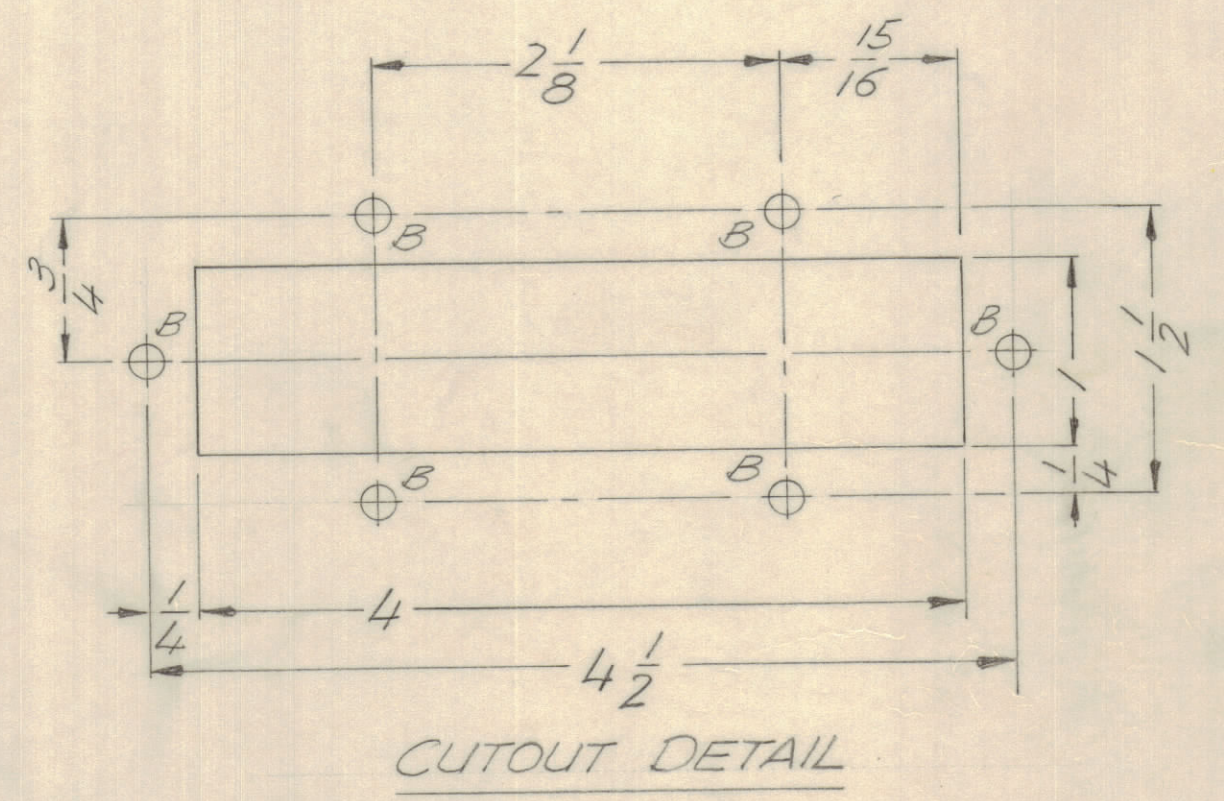
2

1

REVISIONS					DATE	APPROVED
E.M.N.NO	DRAFT	CHKD	ZONE	LTR	DESCRIPTION	
	0			0	ORIGINAL RELEASE FOR PRODUCTION	09/21/71 JED



A HOLES - 11/64 x 11/32 SLOT - 12 REQ.
 B HOLES - 11/64 DIA. - 10 REQ.



MARK TMC PART NUMBER
 1/8 HIGH GOTHIC WITH LATEST
 REVISION LETTER ON REAR OF PANEL

- UNLESS OTHERWISE SPECIFIED:
1. USE MATERIAL THICKNESS FOR MAXIMUM RADIUS ON ALL BENDS.
 2. ALL ANGULAR BENDS 90 DEGREES.
 3. REMOVE ALL BURRS AND SHARP EDGES.
 4. MOUNT INSERTS AFTER FINISHING.

QTY / UNIT	MODEL USED ON	ASS'Y NO.
1	TLAA 1K	BMA 457
APPLICATION		
	CODE	

NOTICE TO PERSONS RECEIVING THIS DRAWING
 THE TECHNICAL MATERIEL CORPORATION claims proprietary right in the material disclosed hereon. This drawing is issued in confidence for engineering information only and may not be reproduced or used to manufacture anything shown hereon without permission from THE TECHNICAL MATERIEL CORPORATION to the user. This drawing is loaned for mutual assistance and is subject to recall at any time.

UNLESS OTHERWISE SPECIFIED
 DIMENSIONS ARE IN INCHES
 AND INCLUDE CHEMICALLY APPLIED
 OR PLATED FINISHES

TOLERANCES ON

DECIMALS	FRACTIONS
.X ± .05	± 1/64
.XX ± .01	ANGLES
.XXX ± .005	± 0° -30'

MATERIAL .051 ALUM
 5052-432

FINISH
 S404 YEL. IRIDITE

QTY. REQ.	ITEM	PART NO.	DESCRIPTION	SYMBOL
F. BUDETTI LIST OF MATERIAL				
FINAL APPROVAL			DATE	THE TECHNICAL MATERIEL CORP. MAMARONECK, NEW YORK <i>COVER, TOP</i>
MECH. DES.			DATE	
ELECT. DES.			DATE	
CHECKED			DATE	
DRAWN			DATE	
C			SIZE CODE IDENT NO. DWG NO.	ISSUE
			82679 MS5970	0
SCALE 1/2			SHEET	OF
			1	