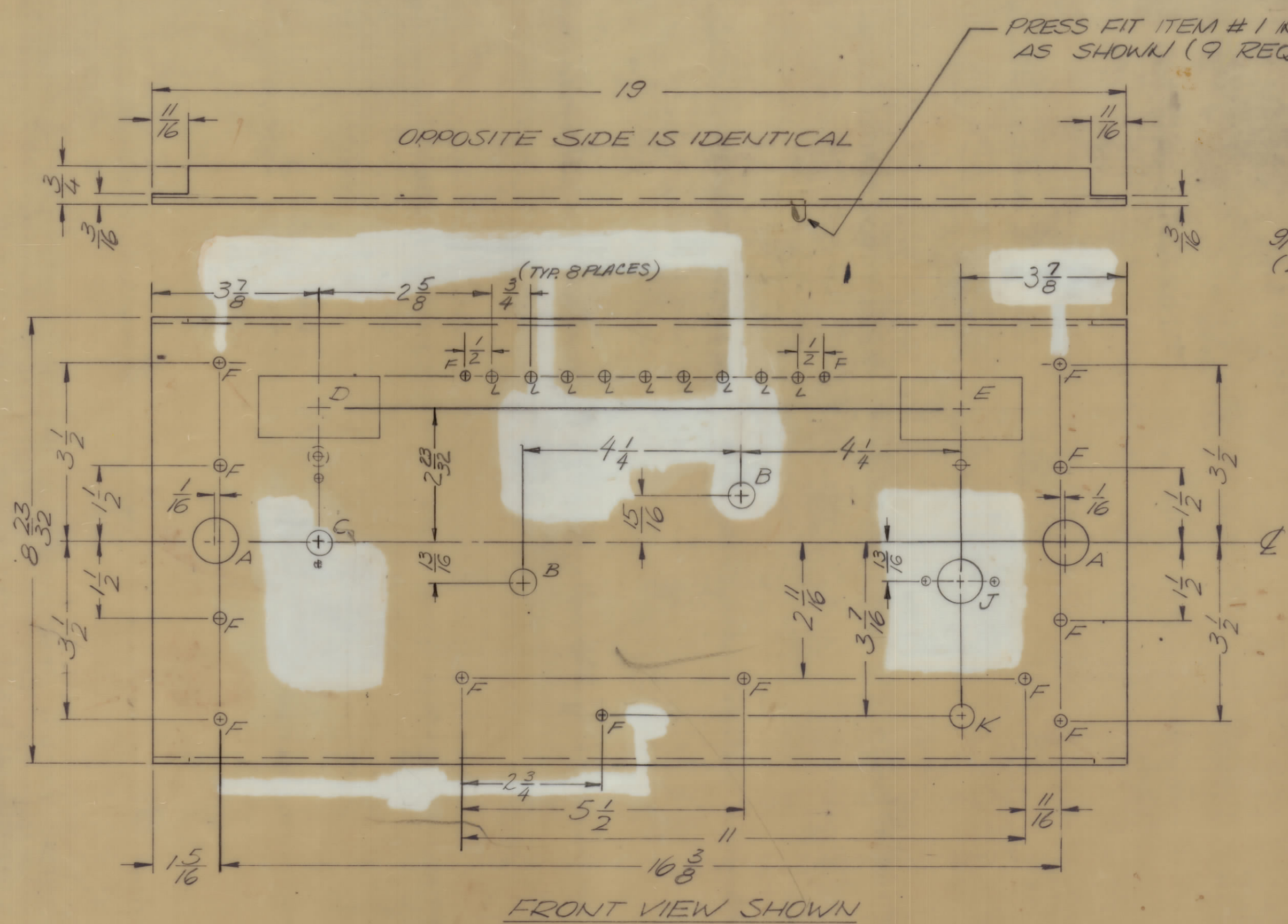
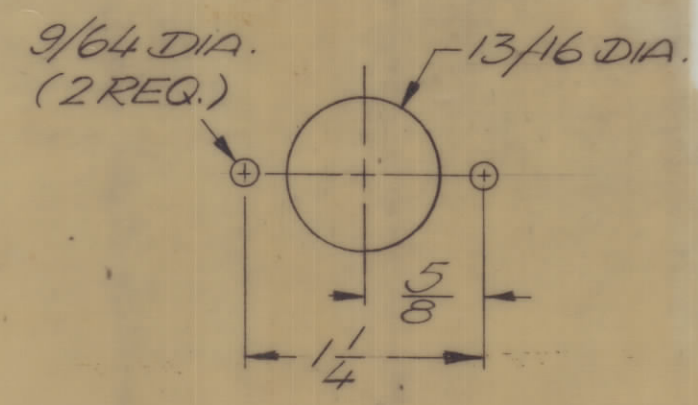


REVISIONS							
E.M.N.NO	DRAFT	CHKD	ZONE	LTR	DESCRIPTION	DATE	APPROVED
	W			Ø	ORIGINAL RELEASE FOR PRODUCTION	6/21/71	P. E. J.
	RG			A	'B' HOLE WAS 3/8 DIA.	2/17/72	PTM



"J" DETAIL

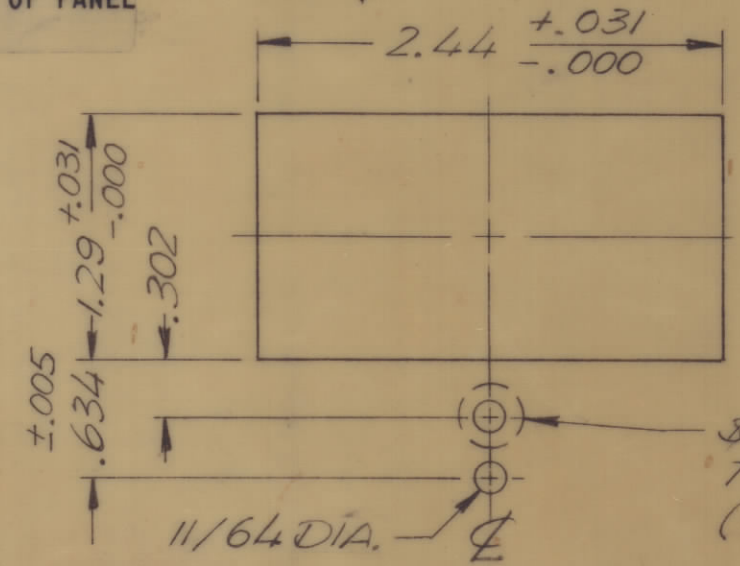


- FINISH NOTES:**
- S404 - IRIDITE 14-2 AL-COAT.
 - S114 - ZINC CHROMATE PRIMER } FRONT AND EDGES ONLY
 - S115 - SMOOTH GRAY ENAMEL } OR PRIME AND PAINT PER CUSTOMER'S SPECIFICATIONS

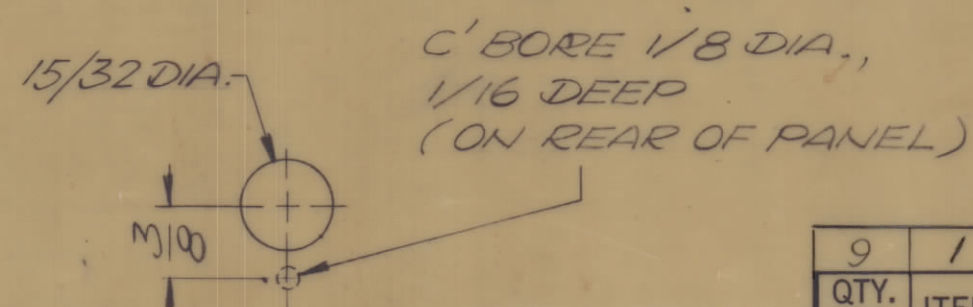
- HOLE LEGEND:**
- A - 7/8 DIA. (2 REQ.)
 - B - 1/2 DIA. (2 REQ.)
 - C - SEE DETAIL (1 REQ.)
 - D - SEE DETAIL (1 REQ.)
 - E - SEE DETAIL (1 REQ.)
 - F - 11/64 DIA. (14 REQ.)
 - G - SEE DETAIL (1 REQ.)
 - H - SEE DETAIL (1 REQ.)
 - J - SEE DETAIL (1 REQ.)
 - K - 15/32 DIA. (1 REQ.)
 - L - .123 DIA. (+.001, -.000) (9 REQ.)

MARK TMC PART NUMBER
1/8 HIGH GOTHIC WITH LATEST
REVISION LETTER ON REAR OF PANEL

"D" & "E" DETAIL



"C" DETAIL



NOTE
DELETE FOR
"E" DETAIL

DRILL .171 DIA. & C'SINK 82°
TO .337 DIA.
(ON REAR OF PANEL)

- UNLESS OTHERWISE SPECIFIED:
- USE MATERIAL THICKNESS FOR MAXIMUM RADIUS ON ALL BENDS.
 - ALL ANGULAR BENDS 90 DEGREES.
 - REMOVE ALL BURRS AND SHARP EDGES.
 - MOUNT INSERTS AFTER FINISHING.

1	TLAA - 1K	BHA 458
QTY / UNIT	MODEL USED ON	ASS'Y NO.
APPLICATION		
CODE		
NOTICE TO PERSONS RECEIVING THIS DRAWING		
THE TECHNICAL MATERIEL CORPORATION claims proprietary right in the material disclosed hereon. This drawing is issued in confidence for engineering information only and may not be reproduced or used to manufacture anything shown hereon without permission from THE TECHNICAL MATERIEL CORPORATION to the user. This drawing is loaned for mutual assistance and is subject to recall at any time.		

REF.: LD2455

UNLESS OTHERWISE SPECIFIED
DIMENSIONS ARE IN INCHES
AND INCLUDE CHEMICALLY APPLIED
OR PLATED FINISHES

TOLERANCES ON

DECIMALS	FRACTIONS
.X ± .05	± 1/64
.XX ± .01	ANGLES
.XXX ± .005	± 0° -30'

MATERIAL 1/8 THK ALLUM
5052 - H32

FINISH
SEE NOTES

QTY. REQ.	ITEM	PART NO.	DESCRIPTION	SYMBOL
9	1	PX 998	ILLUMINATOR BAND	L

F. BUDETTI LIST OF MATERIAL

FINAL APPROVAL: *[Signature]* DATE: 21 Jun 71

MECH. DES.: *[Signature]* DATE: 21 Jun 71

ELECT. DES.: DATE:

CHECKED: DATE:

DRAWN: ALPETROCCA DATE: 1-14-71

THE TECHNICAL MATERIEL CORP.
MAMARONECK, NEW YORK

PANEL, FRONT

SIZE	CODE IDENT NO.	DWG NO.	ISSUE
C	82679	MS5975	A

SCALE: *[Symbol]* SHEET OF