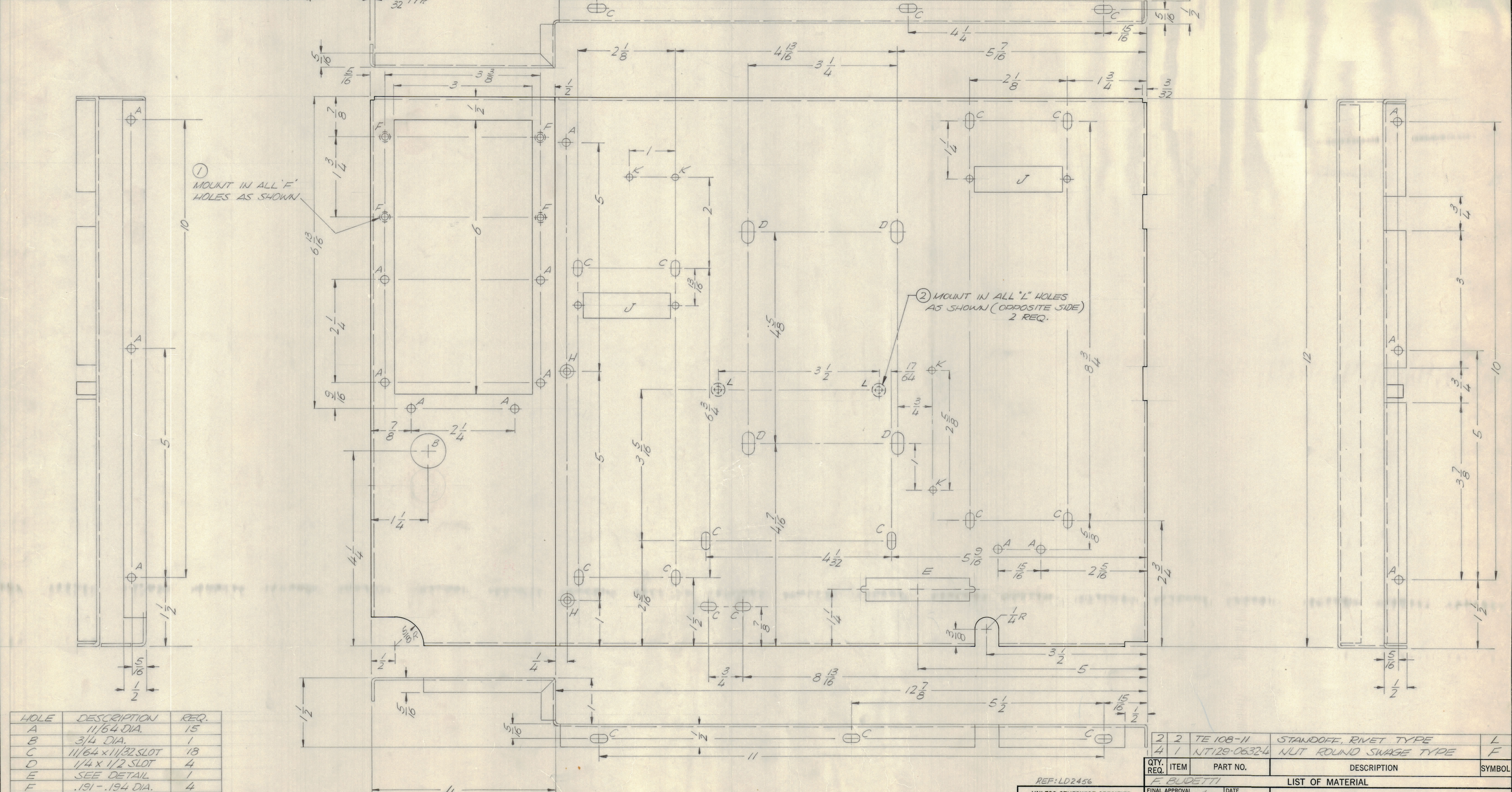
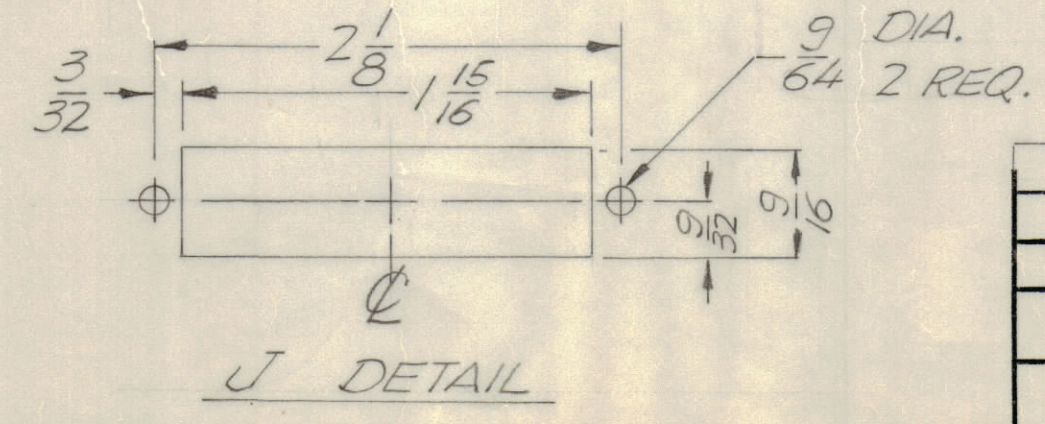
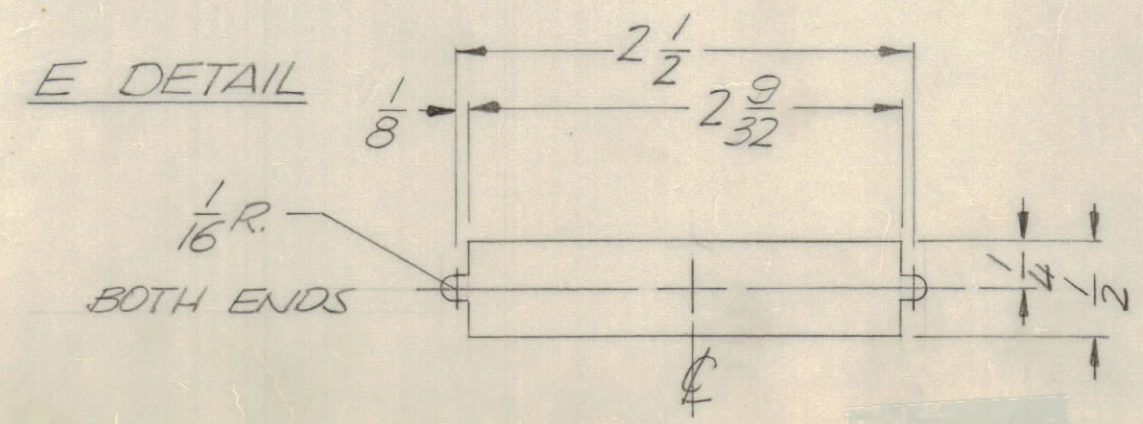


REVISIONS						
ZONE	LTR	DESCRIPTION	DATE	E.M.N.O.	DRAFT	CHKD
	8	ORIGINAL RELEASE FOR PRODUCTION*	1/17/72	20522	GE	CP
	A	ADDED ITEM 2				



HOLE	DESCRIPTION	REQ.
A	11/64 DIA.	15
B	3/4 DIA.	1
C	11/64 x 11/32 SLOT	18
D	1/4 x 1/2 SLOT	4
E	SEE DETAIL	1
F	.191 - .194 DIA.	4
H	DRILL & CSUK FOR .0632 SCREW	2
J	SEE DETAIL	2
K	9/64 DIA.	4
L	.189 - .191 DIA	2

- UNLESS OTHERWISE SPECIFIED:
- USE MATERIAL THICKNESS FOR MAXIMUM RADIUS ON ALL BENDS.
 - ALL ANGULAR BENDS 90 DEGREES.
 - REMOVE ALL BURRS AND SHARP EDGES.
 - MOUNT INSERTS AFTER FINISHING.



QTY. REQ.	ITEM	PART NO.	DESCRIPTION	SYMBOL
2	2	TE 108-11	STANDOFF, RIVET TYPE	L
4	1	NT129-0632-4	NUT ROUND SWAGE TYPE	F

F. BUDETTI LIST OF MATERIAL

FINAL APPROVAL	DATE	THE TECHNICAL MATERIEL CORP. MAMARONECK, NEW YORK CHASSIS, MAIN
MECH. DES.	DATE	
ELECT. DES.	DATE	
CHECKED	DATE	
DRAWN	DATE	SIZE CODE IDENT NO. DWG NO. ISSUE D 82679 MS5976 A
SCALE 1:1		SHEET OF

REF: LD2456

1	TLAA IK	BMA 459
QTY / UNIT	MODEL USED ON	ASSY NO.
APPLICATION		
CODE		
NOTICE TO PERSONS RECEIVING THIS DRAWING THE TECHNICAL MATERIEL CORPORATION claims proprietary right in the material disclosed hereon. This drawing is issued in confidence for engineering information only and may not be reproduced or used to manufacture anything shown hereon without permission from THE TECHNICAL MATERIEL CORPORATION to the user. This drawing is loaned for mutual assistance and is subject to recall at any time.		
TOLERANCES ON DECIMALS .X = .05 FRACTIONS ± 1/64 .XX = .01 ANGLES ± 0° - 30' .XXX = .005		
MATERIAL .064 ALUM. 5052-432		
FINISH S404 YEL. IRIDITE		