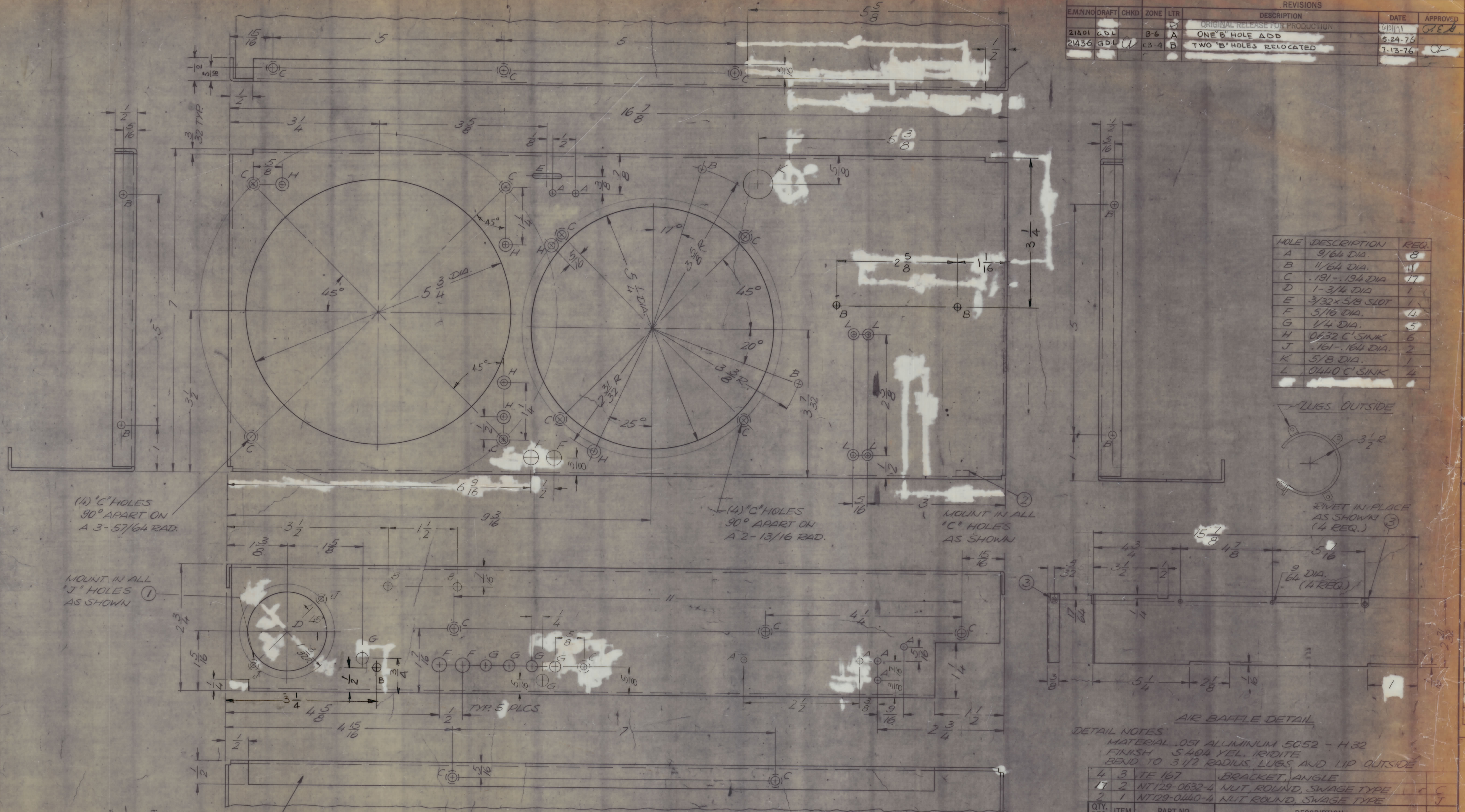
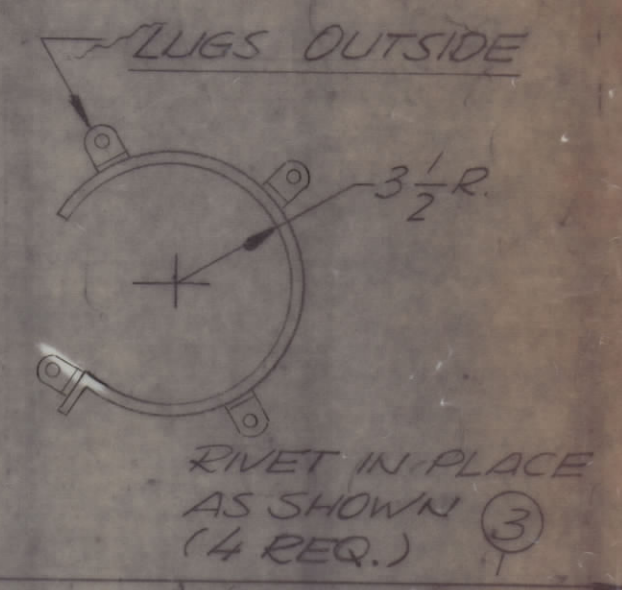


REVISIONS							
E.M.N.O	DRAFT	CHKD	ZONE	LTR	DESCRIPTION	DATE	APPROVED
21401	GBL		B-6	A	ORIGINAL RELEASE FOR PRODUCTION	6/11/71	REB
21436	GD	U	C3-4	B	ONE 'B' HOLE ADD	5-24-76	
					TWO 'B' HOLES RELOCATED	7-13-76	



HOLE	DESCRIPTION	REQ.
A	9/64 DIA.	8
B	11/64 DIA.	11
C	.191-.194 DIA	17
D	1-3/4 DIA	1
E	3/32 x 5/8 SLOT	1
F	5/16 DIA.	4
G	1/4 DIA.	5
H	0632 C'SINK	6
J	.161-.164 DIA.	2
K	5/8 DIA.	1
L	0440 C'SINK	4



(14) 'C' HOLES  
90° APART ON  
A 3-57/64 RAD.

(14) 'C' HOLES  
90° APART ON  
A 2-13/16 RAD.

MOUNT IN ALL  
'C' HOLES  
AS SHOWN

MOUNT IN ALL  
'J' HOLES  
AS SHOWN

**AIR BAFFLE DETAIL**  
DETAIL NOTES  
MATERIAL .051 ALUMINUM 5052 - H32  
FINISH S404 YEL. IRIDITE  
BEND TO 3 1/2 RADIUS, LUGS AND LIP OUTSIDE

QTY.	REQ.	ITEM	PART NO.	DESCRIPTION	SYMBOL
4	3	TE 167		BRACKET, ANGLE	
17	2	NT129-0632-4		NUT, ROUND, SWAGE TYPE	C
2	1	NT129-0440-4		NUT ROUND, SWAGE TYPE	J

F. BLUDITT		LIST OF MATERIAL	
FINAL APPROVAL	DATE	THE TECHNICAL MATERIEL CORP.	
MECH. DES.	DATE	MAMARONECK, NEW YORK	
ELECT. DES.	DATE	CHASSIS, R.F.	
CHECKED	DATE		
DRAWN	DATE		
MATERIAL .064 ALUM 5052 - H32		SIZE CODE/IDENT NO/DWG NO.	ISSUE
FINISH S404 YEL. IRIDITE		D 82679 MS5977	A

MARK TMC PART NUMBER  
1/8 HIGH GOTHIC WITH LATEST  
REVISION LETTER

- UNLESS OTHERWISE SPECIFIED:
- USE MATERIAL THICKNESS FOR MAXIMUM RADIUS ON ALL BENDS.
  - ALL ANGULAR BENDS 90 DEGREES.
  - REMOVE ALL BURRS AND SHARP EDGES.
  - MOUNT INSERTS AFTER FINISHING.

1	TCAA-1K	BMA 460
QTY / UNIT	MODEL USED ON	ASSY NO.
	APPLICATION	
	CODE	

NOTICE TO PERSONS RECEIVING THIS DRAWING  
THE TECHNICAL MATERIEL CORPORATION claims proprietary right in the material disclosed hereon.  
This drawing is issued in confidence for engineering information only and may not be reproduced or used to manufacture anything shown hereon without permission from THE TECHNICAL MATERIEL CORPORATION to the user. This drawing is loaned for mutual assistance and is subject to recall at any time.