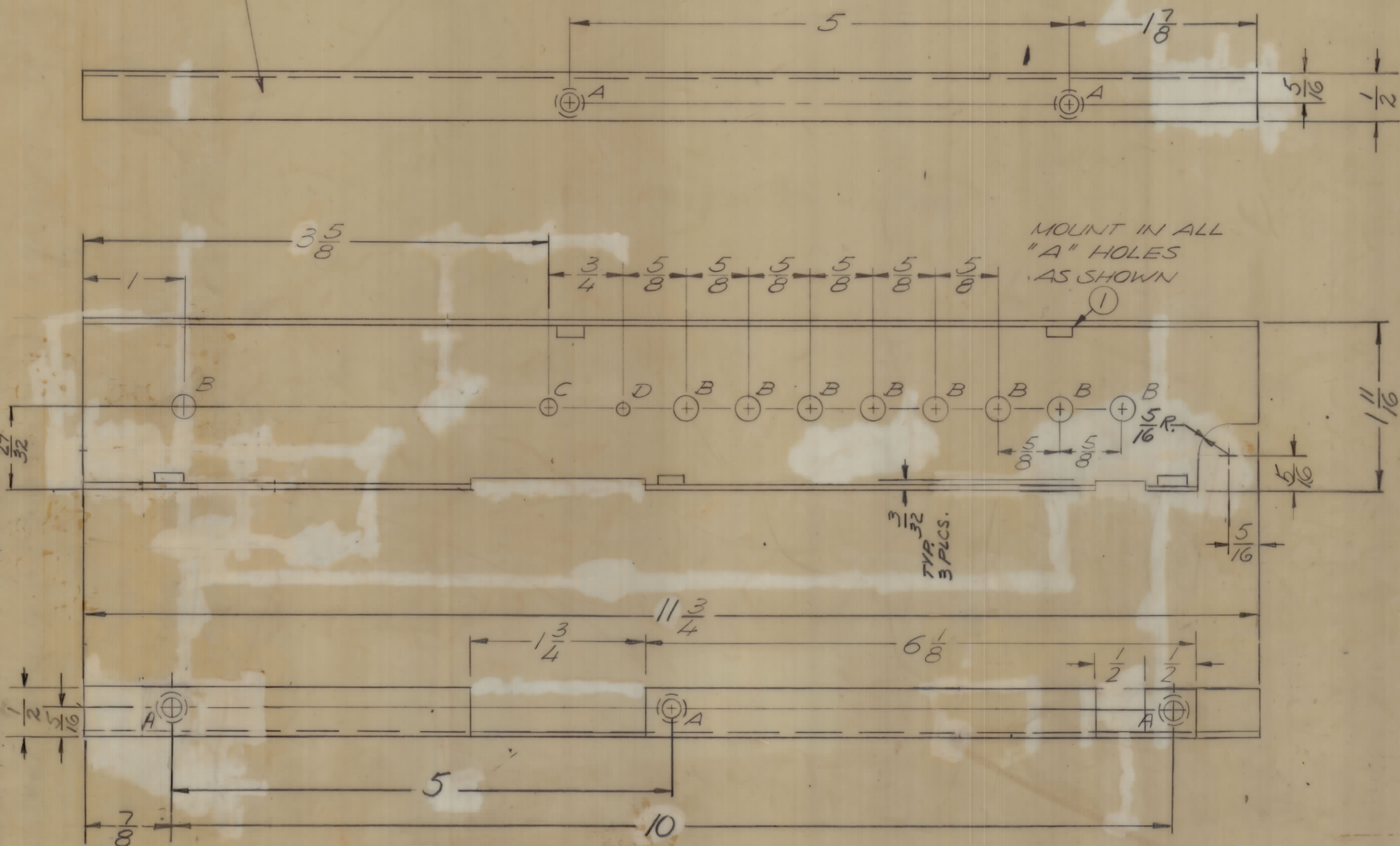


REVISIONS							
E.M.N.NO	DRAFT	CHKD	ZONE	LTR	DESCRIPTION	DATE	APPROVED
	0			0	ORIGINAL RELEASE FOR PRODUCTION	6/21/71	R. E. G.

MARK TMC PART NUMBER
1/8 HIGH GOTHIC WITH LATEST
REVISION LETTER



HOLE LEGEND:
 A - .191 - .194 DIA. (5 REQ.)
 B - 1/4 DIA. (9 REQ.)
 C - 11/64 DIA. (1 REQ.)
 D - 9/64 DIA. (1 REQ.)

UNLESS OTHERWISE SPECIFIED:
 1. USE MATERIAL THICKNESS FOR MAXIMUM RADIUS ON ALL BENDS.
 2. ALL ANGULAR BENDS 90 DEGREES.
 3. REMOVE ALL BURRS AND SHARP EDGES.
 4. MOUNT INSERTS AFTER FINISHING.

REF: LD 2459

QTY. REQ.	ITEM	PART NO.	DESCRIPTION	SYMBOL
5	1	NT129-0632-4	NUT, ROUND, SWAGE TYPE	A

F. BUDETTI LIST OF MATERIAL

FINAL APPROVAL: *[Signature]* DATE: 21 Jun 71
 MECH. DES: *[Signature]* DATE: 21 Jun 71
 ELECT. DES. DATE:
 CHECKED DATE:
 DRAWN: AL PETROCCA DATE: 1-14-71

THE TECHNICAL MATERIEL CORP.
MAMARONECK, NEW YORK

BRACKET, FEED THRU

SIZE	CODE IDENT NO.	DWG NO.	ISSUE
C	82679	MS5979	0

SCALE: 1/8" = 1" SHEET OF

QTY / UNIT	MODEL USED ON	ASS'Y NO.
1	TLAA - 1K	BMA461

APPLICATION

CODE

NOTICE TO PERSONS RECEIVING THIS DRAWING
 THE TECHNICAL MATERIEL CORPORATION claims proprietary right in the material disclosed hereon. This drawing is issued in confidence for engineering information only and may not be reproduced or used to manufacture anything shown hereon without permission from THE TECHNICAL MATERIEL CORPORATION to the user. This drawing is loaned for mutual assistance and is subject to recall at any time.

UNLESS OTHERWISE SPECIFIED DIMENSIONS ARE IN INCHES AND INCLUDE CHEMICALLY APPLIED OR PLATED FINISHES

TOLERANCES ON
 DECIMALS: .X ± .05, .XX ± .01, .XXX ± .005
 FRACTIONS: ± 1/64
 ANGLES: ± 0° -30'

MATERIAL: .064 ALLUM 5052-H32
 FINISH: S404 YEL. IRIDITE