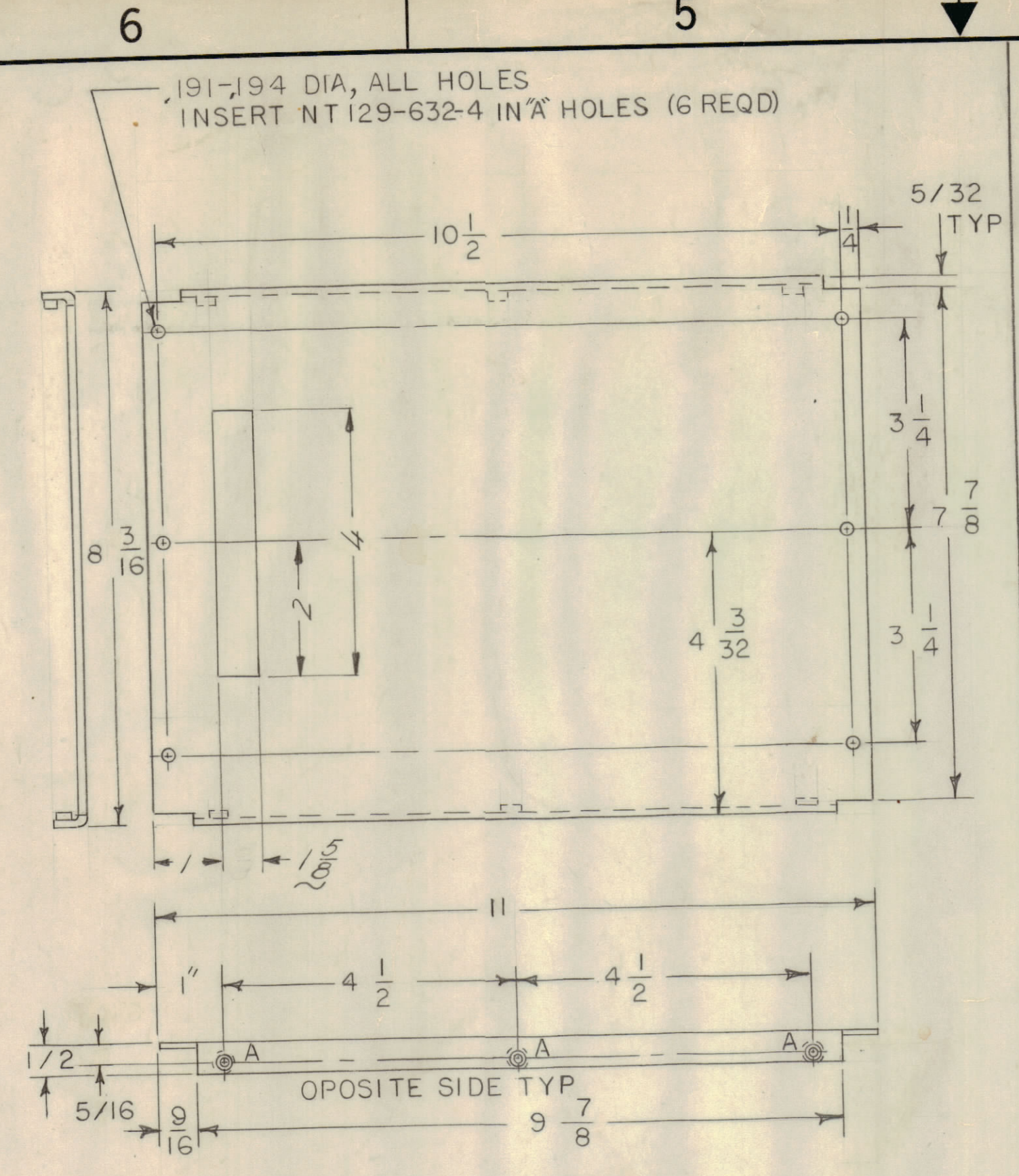
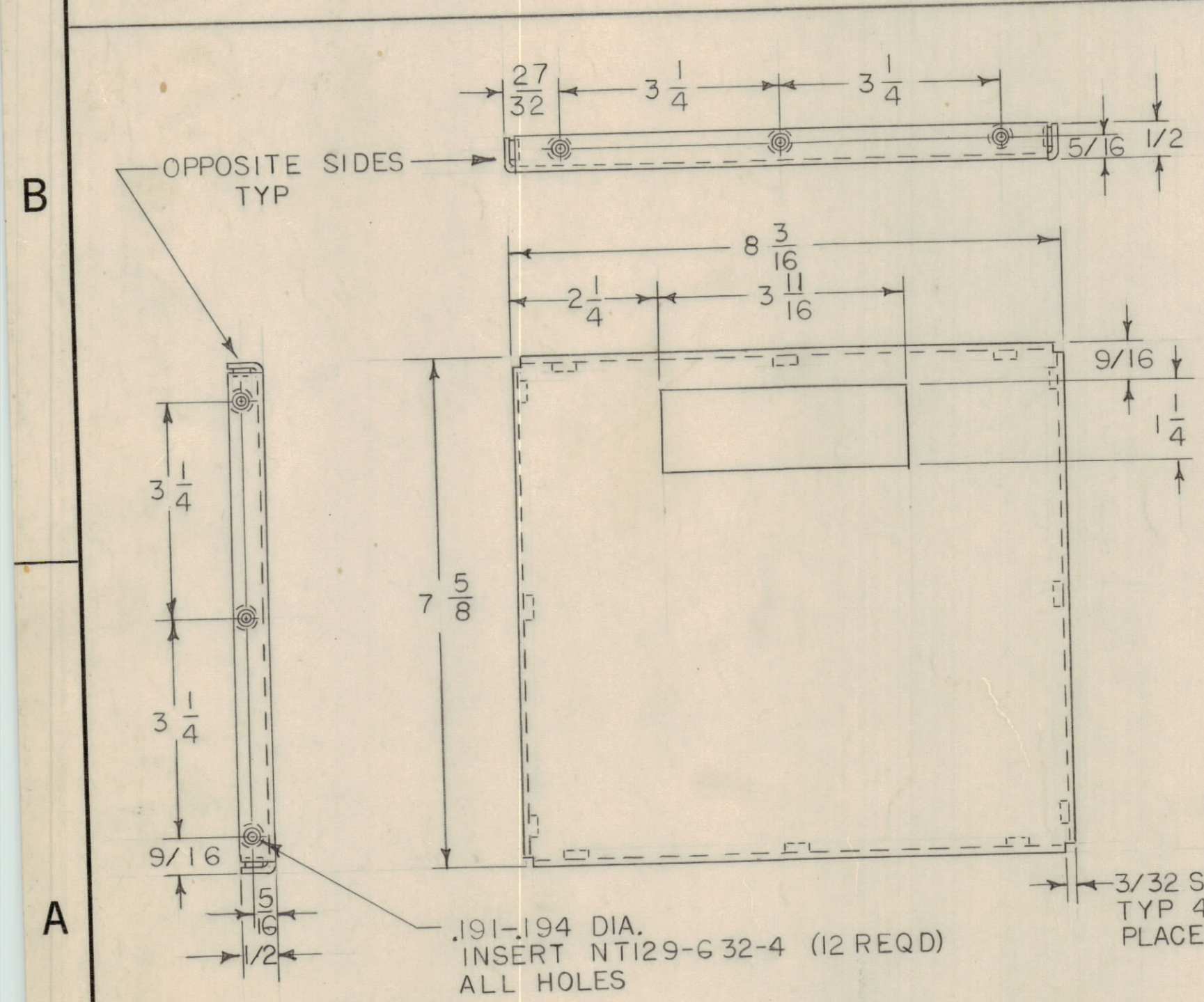


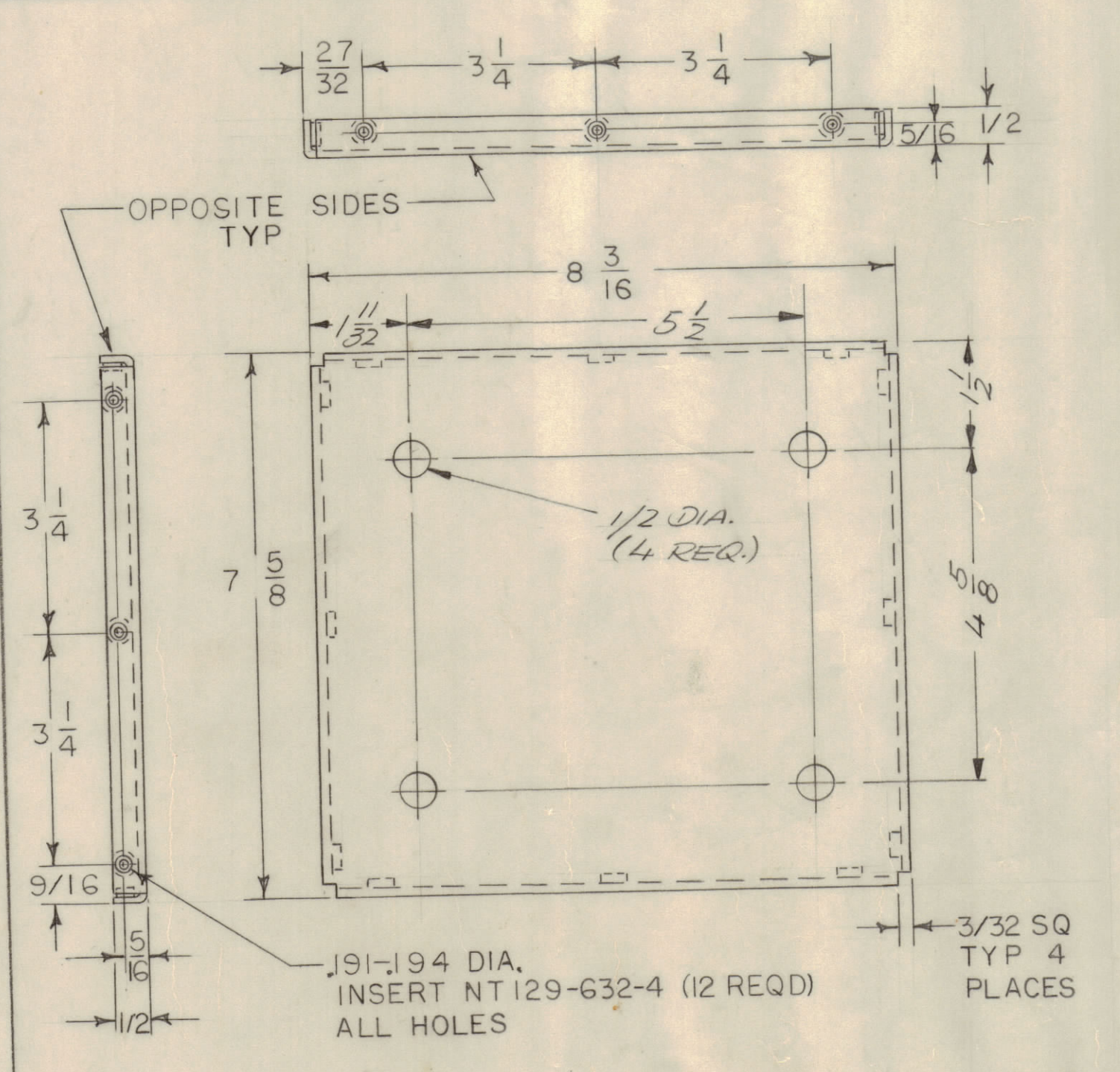
① HOUSING
SEE NOTES



② FRONT COVER
SEE NOTES



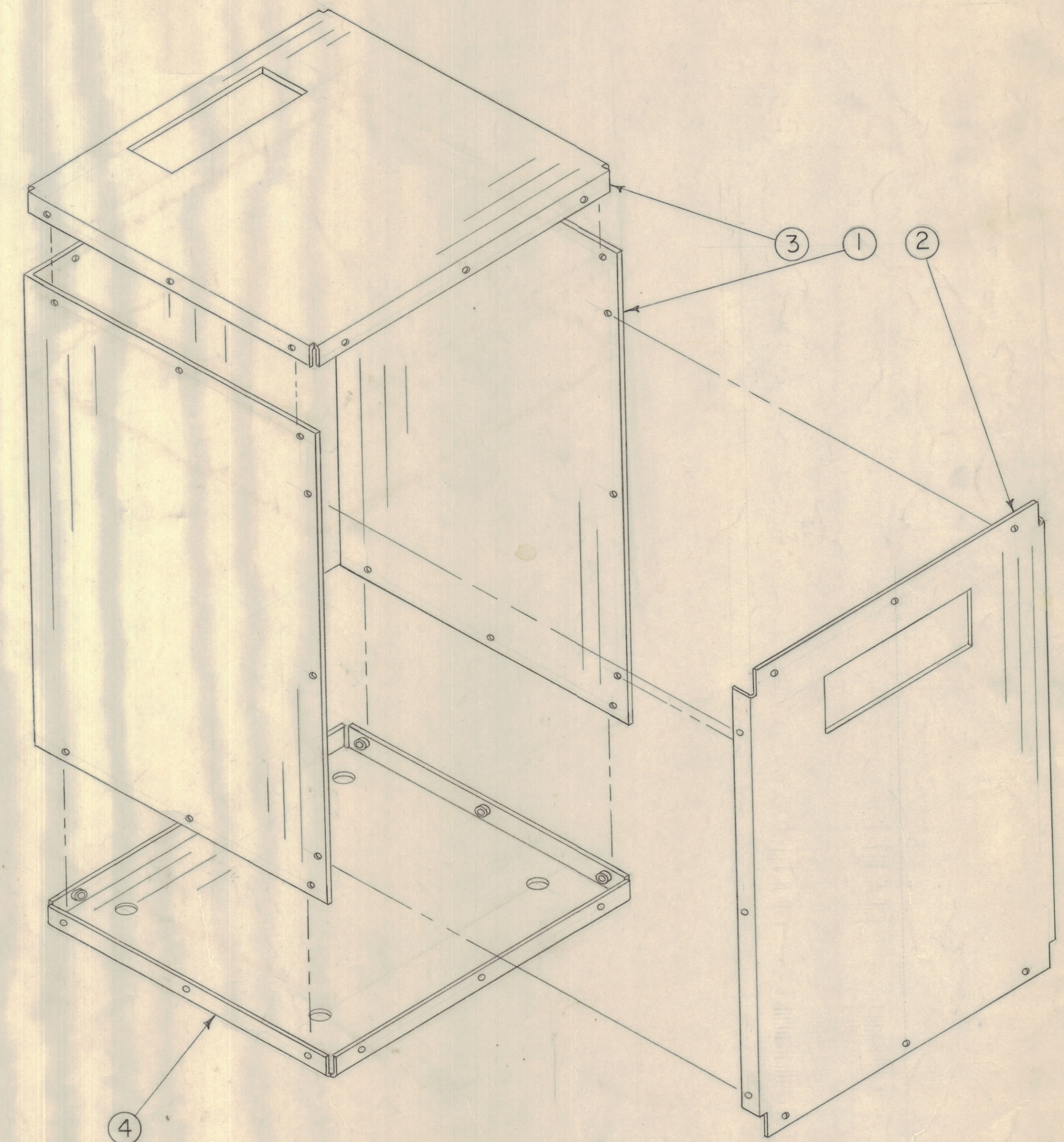
③ TOP COVER
SEE NOTES



④ BOTTOM COVER
SEE NOTES

NOTES:
UNLESS OTHERWISE SPECIFIED:
1. USE MATERIAL THICKNESS FOR MAXIMUM RADIUS ON ALL BENDS.
2. ALL ANGULAR BENDS 90 DEGREES.
3. REMOVE ALL BURRS AND SHARP EDGES.
4. MOUNT INSERTS AFTER FINISHING.

REVISIONS							
E.M.N.O.	DRAFT	CHKD	ZONE	LTR	DESCRIPTION	DATE	APPROVED
	R F			X	EXP RELEASE	4-6-71	
	(U)				ORIGINAL RELEASE FOR PRODUCTION	8/23/71	
	ZD/LLB/GFE	(U)		A	INSERT OPENINGS IN FNT. COVER, ADD 4 HUS BASE	11/20/71	



BCT-10K	
QTY / UNIT	MODEL USED ON ASS'Y NO.
APPLICATION	
CODE	
NOTICE TO PERSONS RECEIVING THIS DRAWING THE TECHNICAL MATERIEL CORPORATION claims proprietary right in the material disclosed herein. This drawing is issued in confidence for engineering information only and may not be reproduced or used to manufacture anything shown hereon without permission from THE TECHNICAL MATERIEL CORPORATION to the user. This drawing is loaned for mutual assistance and is subject to recall at any time.	

UNLESS OTHERWISE SPECIFIED DIMENSIONS ARE IN INCHES AND INCLUDE CHEMICALLY APPLIED OR PLATED FINISHES	
DECIMALS .X ± .05 .XX ± .01 .XXX ± .005	FRACTIONS ± 1/64 ANGLES ± 0° -30'
MATERIAL IS GALV. ELECTRO, GALVINIZED STEEL ASTM A-93-55T	
FINISH S114 S 521 TMC GRAY TEX	

QTY. REQ.	ITEM	PART NO.	DESCRIPTION	SYMBOL
F. BUDETTI LIST OF MATERIAL				
THE TECHNICAL MATERIEL CORP. MAMARONECK, NEW YORK				
TRANSFORMER BOX DETAIL AND ASSEMBLY				
SIZE	CODE	IDENT NO.	DWG NO.	ISSUE
D	82679		MS5980	A
SCALE 1/2				SHEET 1 OF 1