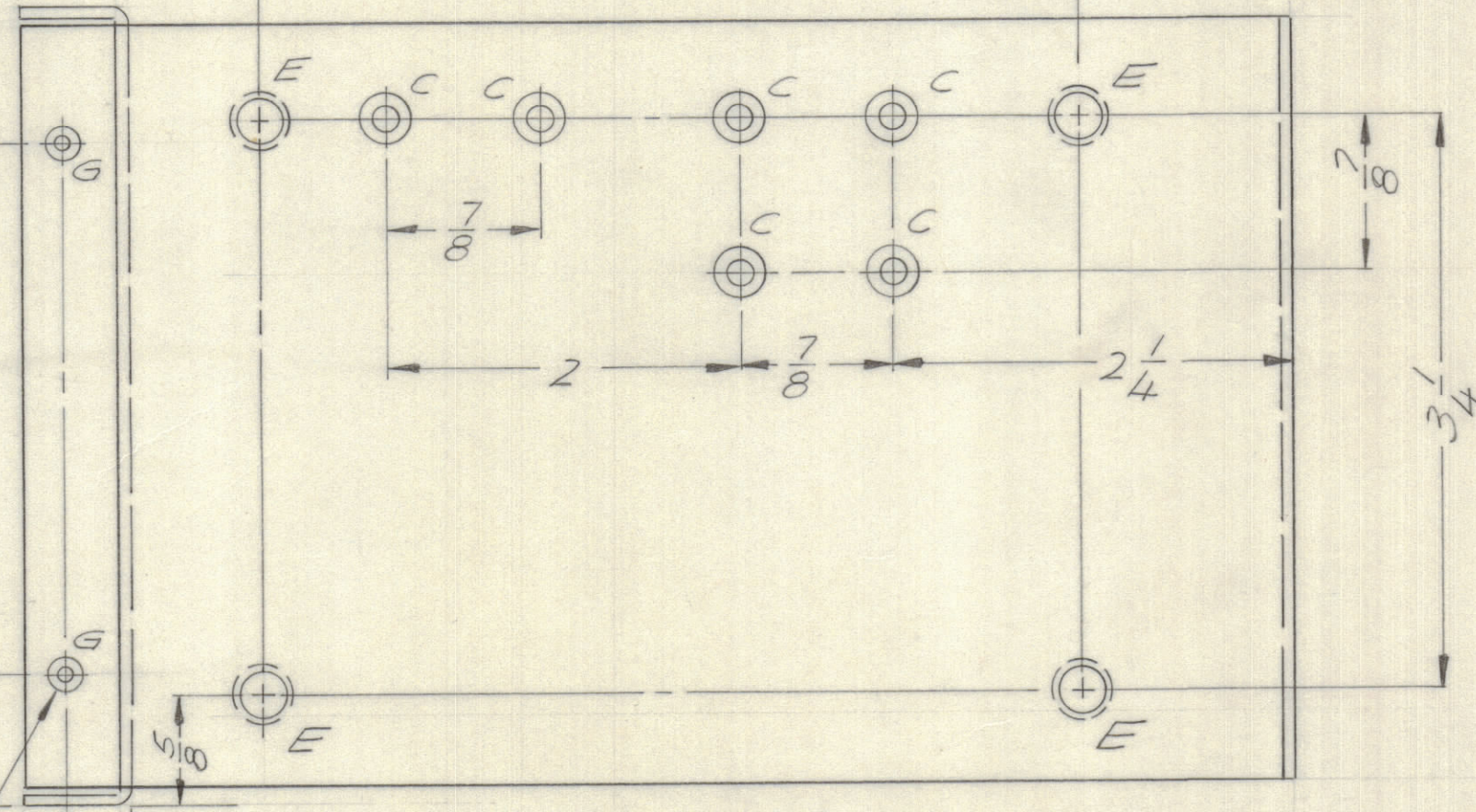
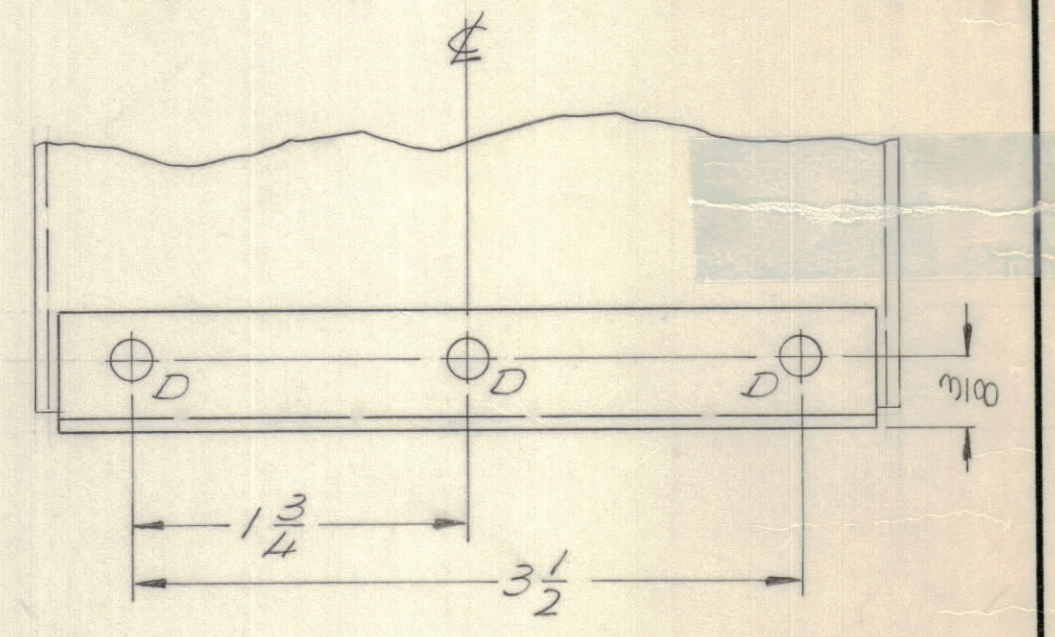
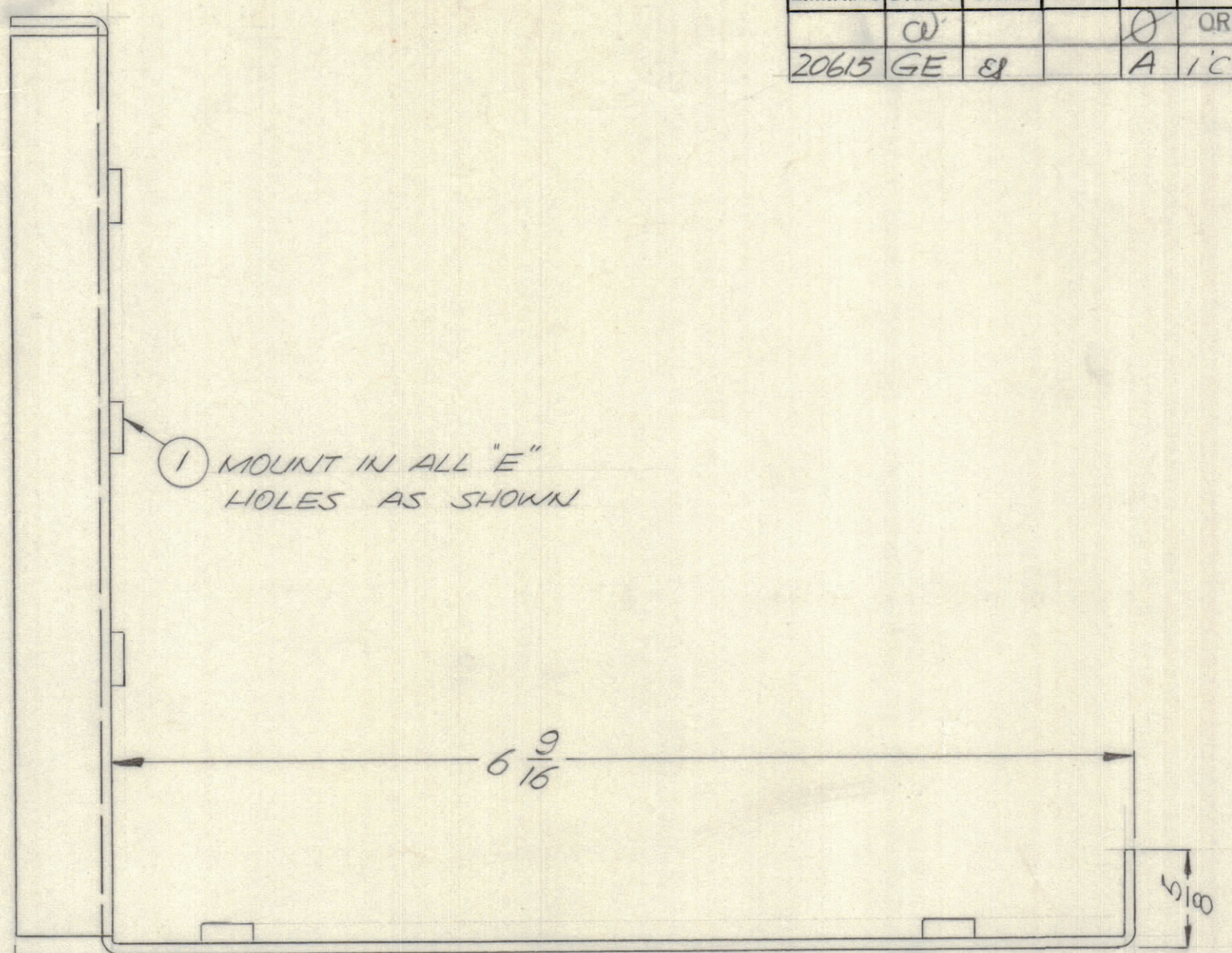
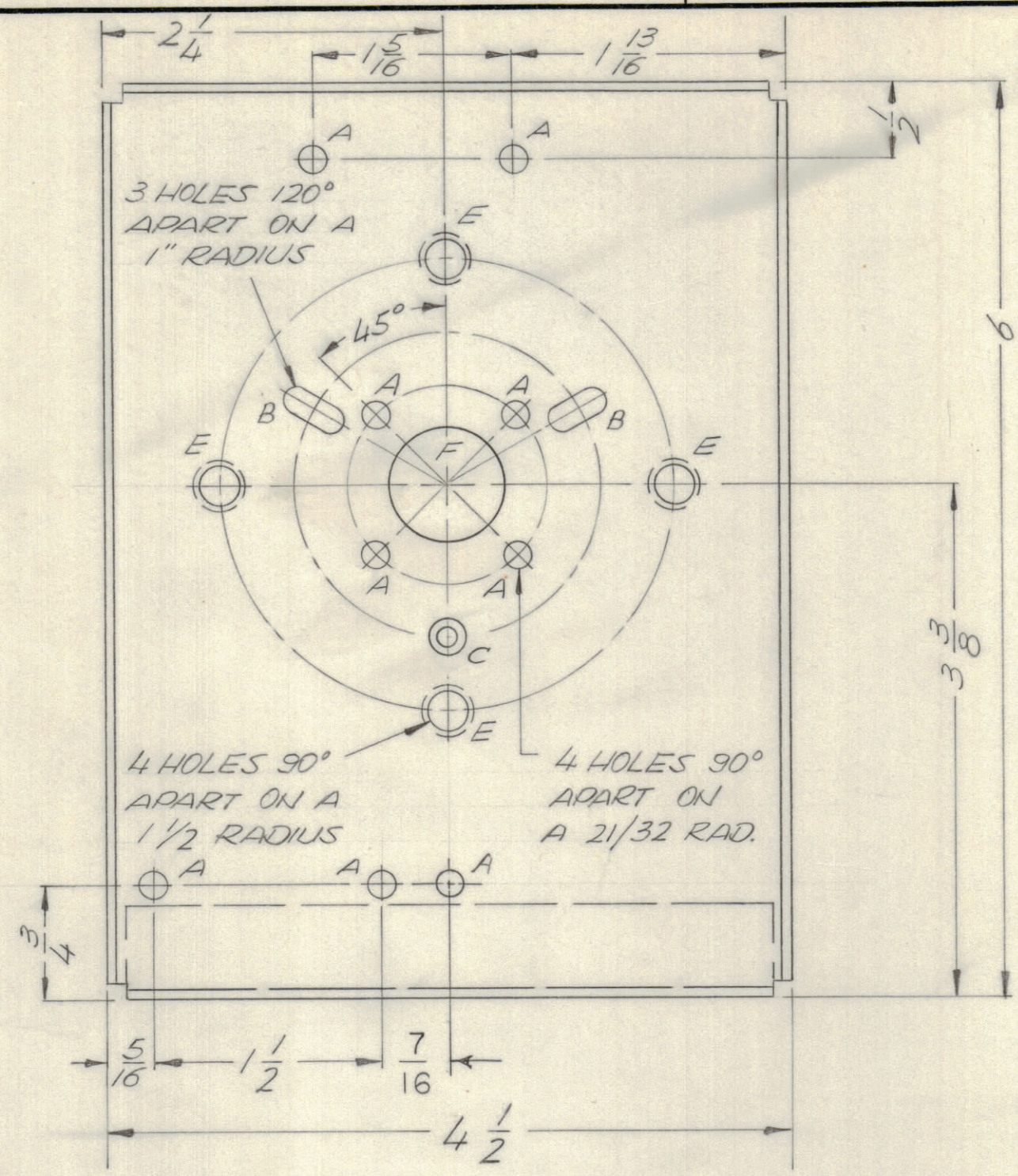


REVISIONS							
E.M.N.NO	DRAFT	CHKD	ZONE	LTR	DESCRIPTION	DATE	APPROVED
	W				ORIGINAL RELEASE FOR PRODUCTION	6/21/71	J.E.B.
20615	GE	8		A	1 C HOLE WAS B HOLE, UPDATE HOLE CHT.	4/26/72	8



HOLE	DESCRIPTION	REQ.
A	11/64 DIA.	9
B	11/64 x 11/32 SLT.	2
C	6-32 C SINK - 82°	7
D	13/64 DIA.	3
E	.250-.254 DIA.	8
F	3/4 DIA.	1
G	.191-.194 DIA.	2

QTY. REQ.	ITEM	PART NO.	DESCRIPTION	SYMBOL
2	2	NT129-632-4	NUT, ROUND, SWAGE TYPE	G
8	1	NT129-1032-4	NUT, ROUND, SWAGE TYPE	E

F. BUDETTI LIST OF MATERIAL			
FINAL APPROVAL	DATE	<b>THE TECHNICAL MATERIEL CORP.</b> MAMARONECK, NEW YORK  <i>BAND SW. WRAPAROUND</i>	
MECH. DES.	DATE		
ELECT. DES.	DATE		
CHECKED	DATE		
DRAWN	DATE		

- UNLESS OTHERWISE SPECIFIED:
- USE MATERIAL THICKNESS FOR MAXIMUM RADIUS ON ALL BENDS.
  - ALL ANGULAR BENDS 90 DEGREES.
  - REMOVE ALL BURRS AND SHARP EDGES.
  - MOUNT INSERTS AFTER FINISHING.

QTY / UNIT	MODEL USED ON	ASS'Y NO.
1	TLAA 1K	AS 160
APPLICATION		
CODE		
<small>NOTICE TO PERSONS RECEIVING THIS DRAWING</small> THE TECHNICAL MATERIEL CORPORATION claims proprietary right in the material disclosed hereon. This drawing is issued in confidence for engineering information only and may not be reproduced or used to manufacture anything shown hereon without permission from THE TECHNICAL MATERIEL CORPORATION to the user. This drawing is loaned for mutual assistance and is subject to recall at any time.		

REF. LD 2460

UNLESS OTHERWISE SPECIFIED DIMENSIONS ARE IN INCHES AND INCLUDE CHEMICALLY APPLIED OR PLATED FINISHES

TOLERANCES ON

DECIMALS	FRACTIONS
.X ± .05	± 1/64
.XX ± .01	ANGLES
.XXX ± .005	± 0° -30'

MATERIAL .081 ALUM.  
5052 H 32

FINISH  
S404 YEL. IRIDITE

SIZE	CODE IDENT NO.	DWG NO.	ISSUE
C	82679	MS 5982	A
SCALE 1:1		SHEET OF	