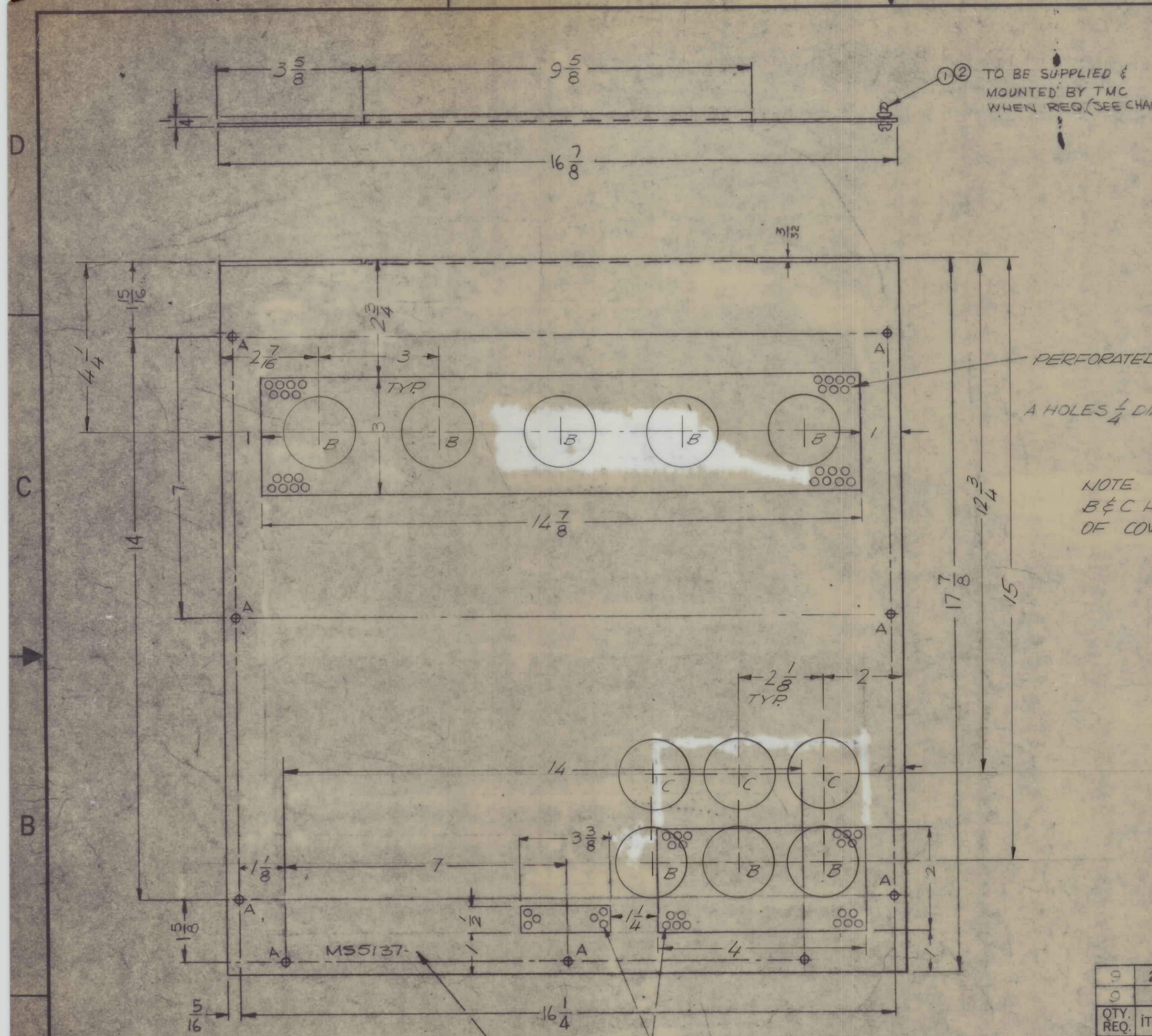


REVISIONS						
ZONE	LTR	DESCRIPTION	DATE	E.M.N.O	DRAFT	CHKD APPD
	Ø	ORIGINAL RELEASE FOR PRODUCTION	4/1/51		W	B&B



PERFORATED AREA 1/16 DIA. HOLES ON 1/8 CENTERS STAGGERED
 A HOLES 1/4 DIA. REQ.

NOTE
 B & C HOLES 1 3/4 DIA. OPTIONAL DEPENDING ON SERIES OF COVER. SEE KIT 369 LPA-2

UNLESS OTHERWISE SPECIFIED:
 1. USE MATERIAL THICKNESS FOR MAXIMUM RADIUS ON ALL BENDS
 2. ALL ANGULAR BENDS 90 DEGREES
 3. REMOVE ALL BURRS AND SHARP EDGES

MARK TMC PART/NO HIGH GOTHIC W/LATEST REVISION LETTER

PERFORATED AREA 1/16 DIA HOLES ON 1/8 CENTERS STAGGERED

QTY. REQ.	ITEM	PART NO.	DESCRIPTION	SYMBOL
Ø	2	FS 109-3	RING, RETAINING	A
Ø	1	FS 110-1	STUD TURNLOCK	A

F. BUDETTI		LIST OF MATERIAL SK-3240-8E9	
FINAL APPROVAL	DATE	THE TECHNICAL MATERIEL CORP. MAMARONECK, NEW YORK	
MECH. DES.	DATE	COVER, CHASSIS	
ELECT. DES.	DATE	SIZE	CODE IDENT. NO. DWG. NO.
CHECKED	DATE	C	82679 MS 5992
DRAWN	DATE	SCALE 1:2	SHEET OF
MATERIAL 5052-H32 .051 ALUMINUM (SEE CHART)		ISSUE	
FINISH S404 YEU IRIDITE		Ø	

EA	LPA-2 KIT 369	ASS'Y NO.
QTY / UNIT	MODEL USED ON	
APPLICATION		
5401-451	CODE A	
NOTICE TO PERSONS RECEIVING THIS DRAWING		
THE TECHNICAL MATERIEL CORPORATION claims proprietary right in the material disclosed herein. This drawing is issued in confidence for engineering information only and may not be reproduced or used to manufacture anything shown hereon without permission from THE TECHNICAL MATERIEL CORPORATION to the user. This drawing is loaned for mutual assistance and is subject to recall at any time.		