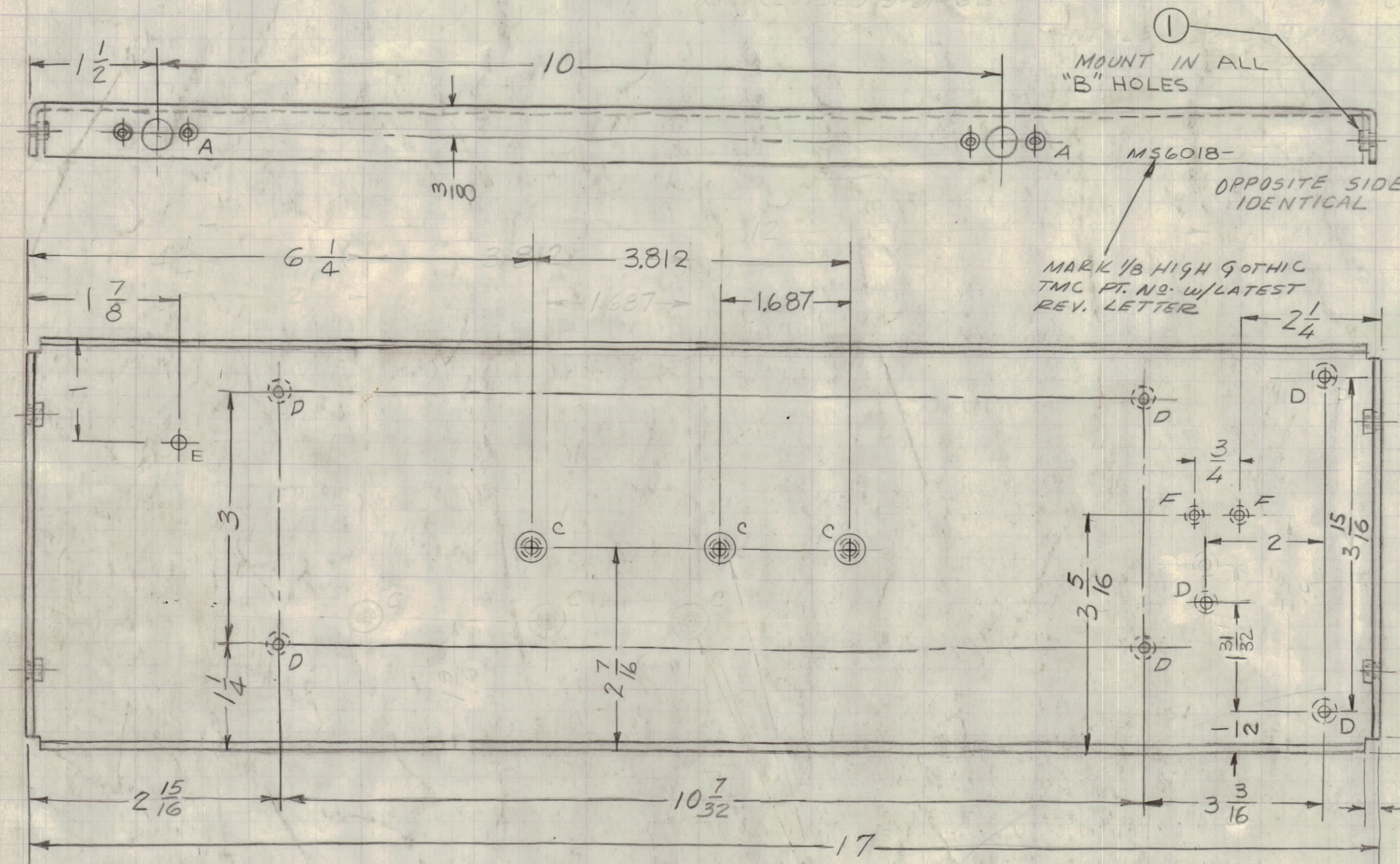


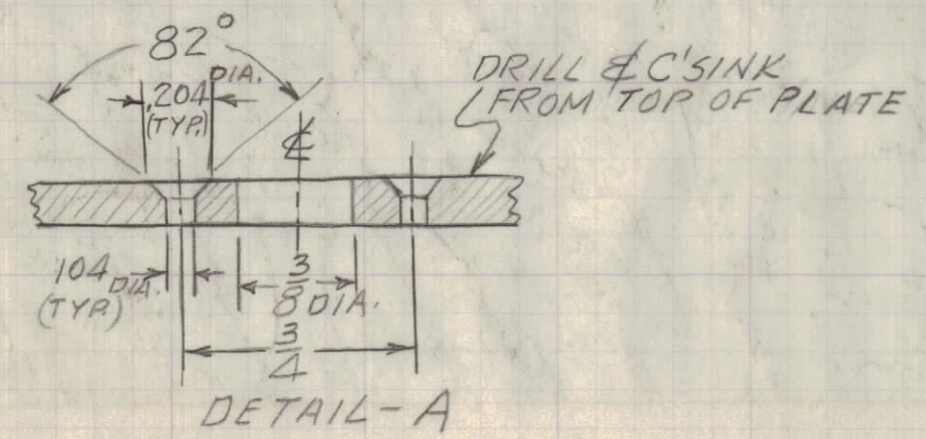
REVISIONS							
SYM	ZONE	DESCRIPTION	DATE	E.M.N.NO.	DRAFT	CHKD	APPD
X		EXPERIMENTAL RELEASE	1/31/66	X	RME		
XI	F7	"E" HOLE ADDED	1-13-66		LHW		
0		ORIGINAL RELEASE FOR PRODUCTION	6-26-67	0	RG		
A		MOD. HFSR-4 DELE. MOD. MMX-( ) ADDED	10/24/67	CC.	Enf		OPJ
B		3 C HOLES RELOCATED	5/10/68	18919	HP2		GPJ
C		ADD 2 'F' HOLES	8/19/70	19963	GE		CL
D	A,D,E	ADD 3 'D' HOLES - 'D' WAS C'SINK FOR 0440	9-26-70	21169	GDL		CL
E		DIM. 3 3/16 WAS 3 3/8, 1 31/32 WAS 2 1/4 & 3 15/16 WAS 4	1-27-76	21348	GDL		CL



MARK 1/8 HIGH GOTHIC TMC PT. NO. W/LATEST REV. LETTER

MOUNT IN ALL 'C' HOLES

HOLE DESCRIPTION	REQ
A SEE DETAIL	4
B .221-.224 DIA.	4
C .277-.280 DIA.	3
D C'SINK FOR 0632 SCR	7
E 3/16 DIA.	1
F C'SINK FOR 0440 SCR.	2



HOLE	DESCRIPTION	REQ.
A	SEE DETAIL	4
B	.221-.224 DIA.	4
C	.277-.280 DIA.	3
D	C'SINK FOR 0632 SCR	7
E	3/16 DIA.	1
F	C'SINK FOR 0440 SCR.	2

- UNLESS OTHERWISE SPECIFIED:
1. USE MATERIAL THICKNESS FOR MAXIMUM RADIUS ON ALL BENDS
  2. ALL ANGULAR BENDS 90 DEGREES
  3. REMOVE ALL BURRS AND SHARP EDGES
  4. MOUNT INSERTS AFTER FINISHING

QTY. REQ	MODEL USED ON	ASSY NO.
1	MMX-( )	AX 676
1	MMX-1	BMA 105
1	VOX-7	BMA 114

MAXIMUM ALLOWABLE TOLERANCES HAVE BEEN DETERMINED AND ANY DEVIATIONS WILL BE CAUSE FOR REJECTION.

UNLESS OTHERWISE SPECIFIED DIMENSIONS ARE IN INCHES TOLERANCES ON FRACTIONS DECIMALS ANGLES ±1/64 ±.005 ±1/2°

MATERIAL .063 THK. ALUMINUM 5052 - H32

FINISH S404 YELLOW IRIDITE

QTY REQ	ITEM	PART NO.	DESCRIPTION	SYMBOL
3	2	NT129-1224-4	NUT, PLN, SPLINE	C
4	1	NT129-832-4	NUT, PLN, SPLINE	B

0. POSE BILL OF MATERIAL REF. SK 3213-MS25

FINAL APPROVAL: [Signature] DATE 6/26/67  
MECH. DES. [Signature] DATE 6/26/67  
ELECT. DES. [Signature] DATE  
CHECKED [Signature] DATE 6-22-67  
DRAWN RME DATE 6/31/66

APPROVED FOR BUSHIPS: [Signature] DATE 6/26/67

CONTRACT NO. 5401-451

THE TECHNICAL MATERIEL CORP. MAMARONECK, NEW YORK

PLATE, CHASSIS, MOUNTING (LEFT SIDE)

CODE 82679	SIZE C	DWG. NO. MS 6018	ISSUE E
------------	--------	------------------	---------

SCALE SHEET OF 1