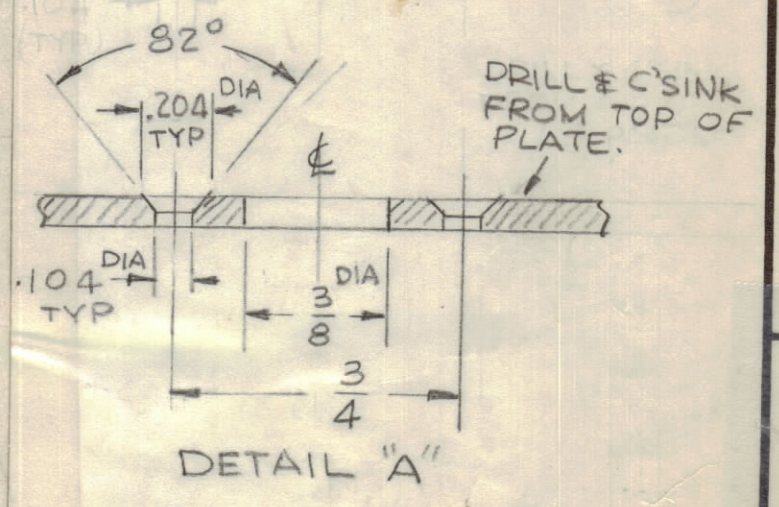
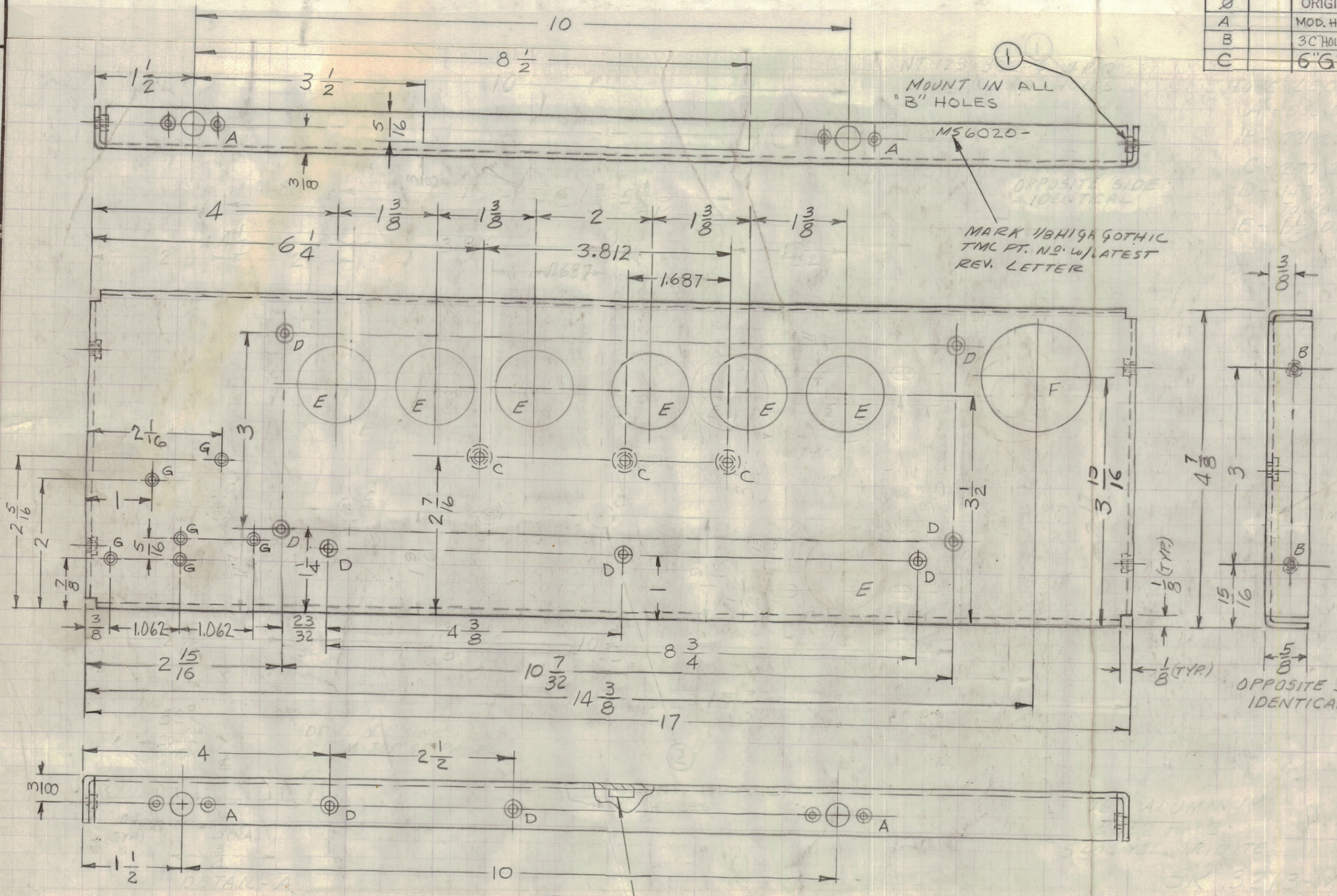


REVISIONS						
SYM	ZONE	DESCRIPTION	DATE	E.M.N.NO.	DRAFT	CHKD APPD
X		EXPERIMENTAL RELEASE	1/31/66	X	RME	
X1	F4	"F" ADDED; "E" DELETED	1-13-67		WHO	
X2		CHANGED LOCATION OF 2 "E" HOLES	3-16-67		EDL	
X3		ON DIET. BOTTOM VIEW ADDED 5 "D" HOLES ADDED	6-14-67		G.D.L	
Ø		ORIGINAL RELEASE FOR PRODUCTION	6-26-67	Ø	RG	
A		MOD. HFSR-4 DELE. MODED MMX-(1) ADDED	10/29/67	C.C.	B.M.F.	OP
B		3 "C" HOLES RELOCATED; NOTCH ADDED ON LIP	5/10/68	18919	H.S.	OP
C		6 "G" HOLES ADDED	7-9-68	18996	H.S.	OP



HOLE	DESCRIPTION	REQ.
A	SEE DETAIL	4
B	.221 - .224 DIA.	4
C	.277 - .280 DIA.	3
D	.147 DIA & 82° C'SINK TO .284 DIA	9
E	1-1/8 DIA.	6
F	1-5/8 DIA	1
G	.120 DIA & 82° C'SINK TO .230 DIA	6

- UNLESS OTHERWISE SPECIFIED:
- USE MATERIAL THICKNESS FOR MAXIMUM RADIUS ON ALL BENDS
  - ALL ANGULAR BENDS 90 DEGREES
  - REMOVE ALL BURRS AND SHARP EDGES
  - MOUNT INSERTS AFTER FINISHING

QTY. REQ.	MODEL USED ON	ASSY. N.
1	MMX-(1)	AX676
1	MMX-1	BMA 109
1	VOX-7	BMA 114

QTY. REQ.	MODEL USED ON	ASSY. N.
1	MMX-(1)	AX676
1	MMX-1	BMA 109
1	VOX-7	BMA 114

MAXIMUM ALLOWABLE TOLERANCES HAVE BEEN DETERMINED AND ANY DEVIATIONS WILL BE CAUSE FOR REJECTION.

UNLESS OTHERWISE SPECIFIED DIMENSIONS ARE IN INCHES  
TOLERANCES ON FRACTIONS DECIMALS ANGLES  
±1/64 ±.005 ±1/2°

MATERIAL  
.063 THK. ALUMINUM  
5052 -H 32

FINISH  
S 404 YELLOW IRIDITE

QTY REQ	ITEM	PART NO.	DESCRIPTION	SYMBOL
3	2	NT129-1224-4	NUT, PLN, SPLINE	C
4	1	NT129-832-4	NUT, PLN, SPLINE	B

0. POSE BILL OF MATERIAL REF. SK3213-MS24

FINAL APPROVAL: [Signature] DATE: 6/26/67  
MECH. DES. DATE: 6/26/67  
ELECT. DES. DATE: [ ]

CHECKED: [Signature] DATE: 6-21-67  
DRAWN: RME DATE: 10/31/66

APPROVED FOR SHIPING: S401-451  
CONTRACT NO.: m/l [Signature] 6/26/67

THE TECHNICAL MATERIEL CORP.  
MAMARONECK, NEW YORK

PLATE, CHASSIS, MOUNTING (RIGHT SIDE)

CODE	SIZE	DWG. NO.	ISSUE
82679	C	MS6020	C

SCALE: SHEET 1 OF 1