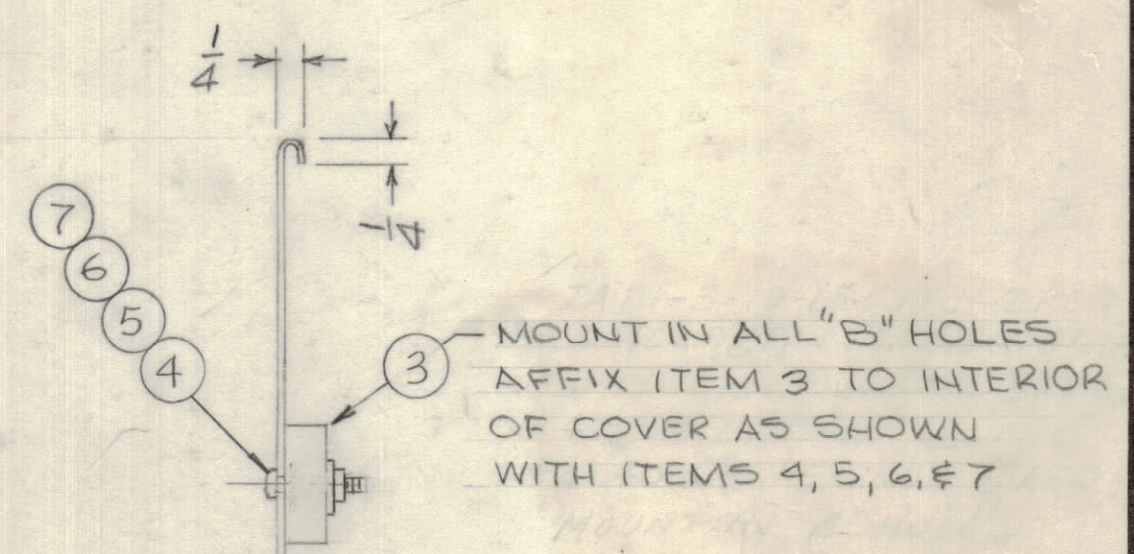
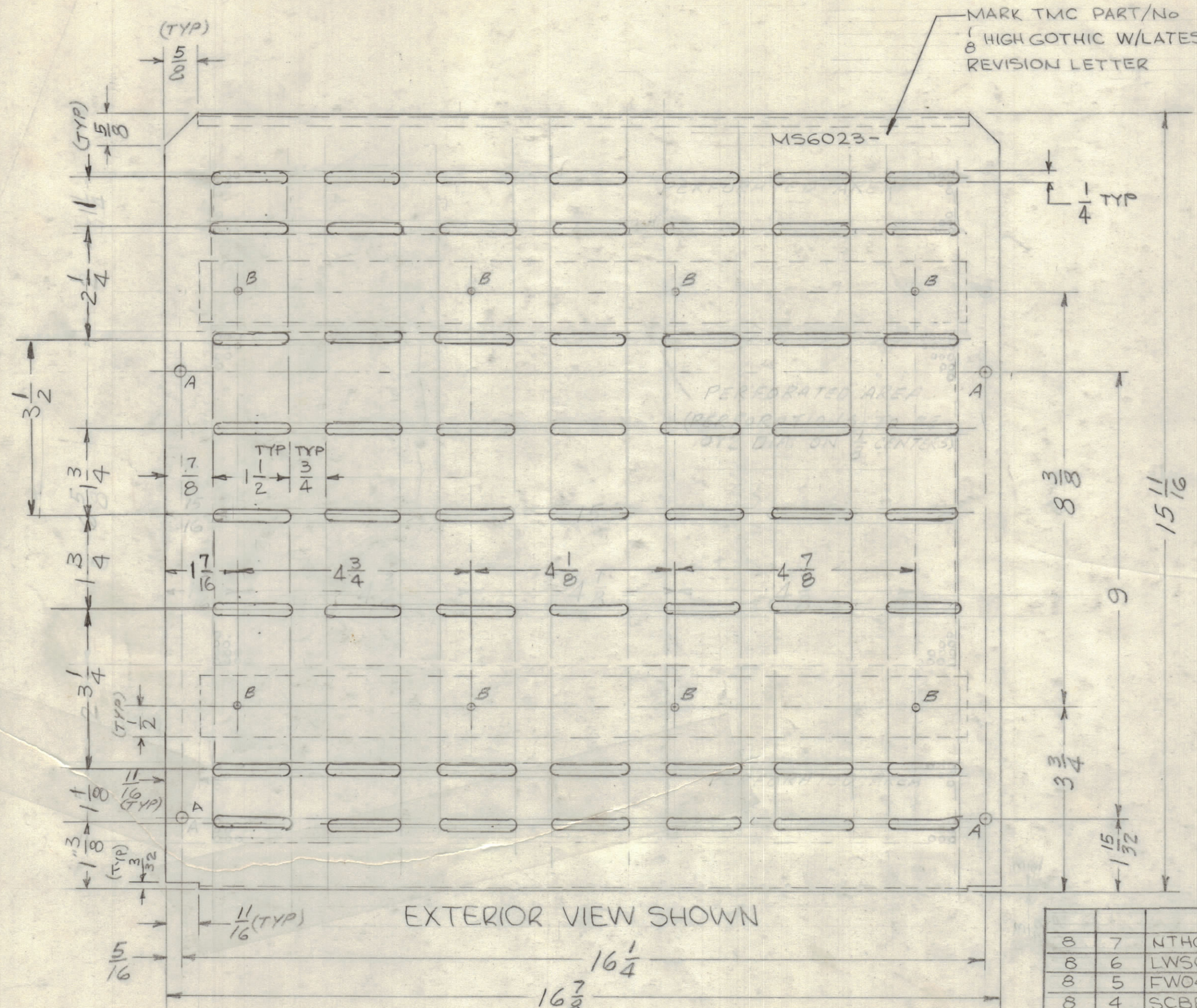


REVISIONS						
SYM	ZONE	DESCRIPTION	DATE	E.M.N. NO.	DRAFT	CHKD APPD
X1		1/2(TYP) DIM WAS 5/8 TAIL-3-8-15.500C WAS TAIL-3-10-15.500C	12/16/66		lfw	gdl
Ø		ORIGINAL RELEASE FOR PRODUCTION	12-16-66		RME	
A		SLOTS AREA WAS PERFORATED	12-7-84	21997	GDL	

HOLES
 A - 1/4 DIA - 4 REQ
 B - 1/8 DIA - 8 REQ



SEE NOTE

NOTE:-
 ITEMS 1 THRU 7 TO BE SUPPLIED AND ASSEMBLED BY TMC

QTY REQ	ITEM	PART NO.	DESCRIPTION	SYMBOL
8	7	NTH0440BNS	NUT, HEX	
8	6	LWS04MRN	WASHER, FLAT	
8	5	FW04HBN	LOCKWASHER, SPRING TYPE	
8	4	SCBP0440BNS	SCREW, MACHINE	
2	3	TAIL-3-8-15.500C	TAPE, URETHANE	
4	2	FS110-1	STUD, SLOT HEAD	
4	1	FS109-3	RING, STUD RETAINING	

QTY REQ	ITEM	PART NO.	DESCRIPTION	SYMBOL
POSE				
BILL OF MATERIAL SK 3200 MS 1				

- UNLESS OTHERWISE SPECIFIED:
1. USE MATERIAL THICKNESS FOR MAXIMUM RADIUS ON ALL BENDS
 2. ALL ANGULAR BENDS 90 DEGREES
 3. REMOVE ALL BURRS AND SHARP EDGES
 4. MOUNT INSERTS AFTER FINISHING

MAXIMUM ALLOWABLE TOLERANCES HAVE BEEN DETERMINED AND ANY DEVIATIONS WILL BE CAUSE FOR REJECTION.

UNLESS OTHERWISE SPECIFIED DIMENSIONS ARE IN INCHES TOLERANCES ON FRACTIONS DECIMALS ANGLES ±1/64 ±.005 ±1/2°

MATERIAL
 .051 ALU ALLOY
 5052 H 32

FINISH
 5404 YEL. IRIDITE

FINAL APPROVAL	DATE	THE TECHNICAL MATERIEL CORP. MAMARONECK, NEW YORK			
MECH. DES.	DATE				
ELECT. DES.	DATE				
CHECKED	DATE	COVER, TOP MODEL CFA-2			
DRAWN	DATE				
APPROVED FOR BUSHIPS		CODE	SIZE	DWG. NO.	ISSUE
CONTRACT NO.		82679	C	MS6023	A
		SCALE 1:2	SHEET 1 OF 1		