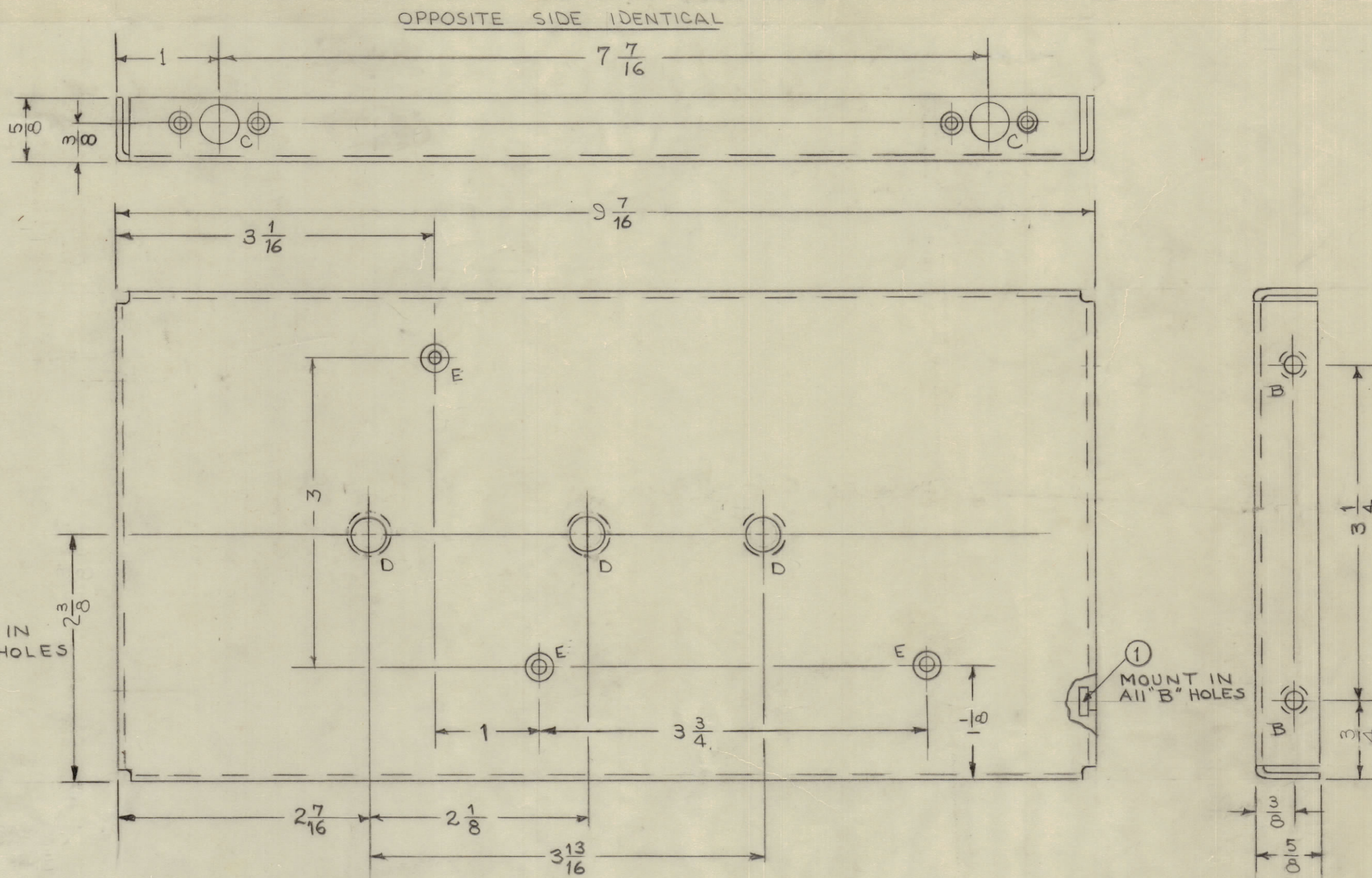


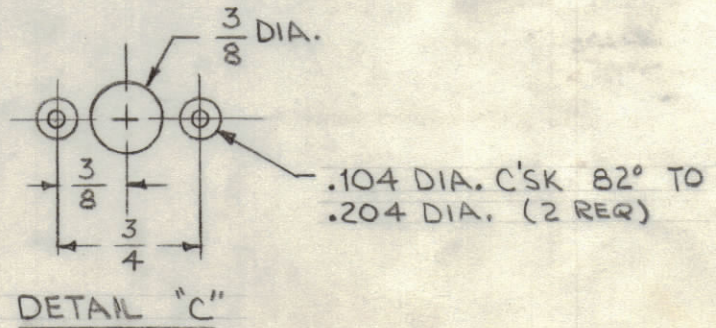
REVISIONS							
SYM	ZONE	DESCRIPTION	DATE	E.M.N. NO.	DRAFT	CHKD	APPD
X		EXPERIMENTAL RELEASE	11/14/66	X	RME		
Ø		ORIGINAL RELEASE FOR PRODUCTION	12-19-66	Ø	RME		



PART NO.	DESCRIPTION	SIDE
MS629-1	AS SHOWN	RIGHT
MS629-2	OPPOSITE HAND	LEFT

- UNLESS OTHERWISE SPECIFIED:
1. USE MATERIAL THICKNESS FOR MAXIMUM RADIUS ON ALL BENDS
 2. ALL ANGULAR BENDS 90 DEGREES
 3. REMOVE ALL BURRS AND SHARP EDGES
 4. MOUNT INSERTS AFTER FINISHING

HOLE LEGEND		
HOLE	DESCRIPTION	REQ.
A	11/64 DIA.	2
B	.191-.194 DIA.	2
C	SEE DETAIL	4
D	.344-.347 DIA.	3
E	.144D. C'SK 82° TO .284 DIA.	3



MAXIMUM ALLOWABLE TOLERANCES HAVE BEEN DETERMINED AND ANY DEVIATIONS WILL BE CAUSE FOR REJECTION.

UNLESS OTHERWISE SPECIFIED DIMENSIONS ARE IN INCHES
 TOLERANCES ON FRACTIONS DECIMALS ANGLES
 $\pm 1/64$ $\pm .005$ $\pm 1/2^\circ$

MATERIAL
 .063 THK. ALUMINUM
 5052-H32

FINISH
 S404 YELLOW IRIDITE

3	2	NT129-420-4	NUT, PLN, SPLINE	D
2	1	NT129-632-4	NUT, PLN, SPLINE	B
QTY REQ	ITEM	PART NO.	DESCRIPTION	SYMBOL
L. BUTLER BILL OF MATERIAL REF. SK3254-4				
FINAL APPROVAL	DATE	THE TECHNICAL MATERIEL CORP.		
MECH. DES.	DATE	MAMARONECK, NEW YORK		
ELECT. DES.	DATE	PLATE, SIDE - RIGHT & LEFT		
CHECKED	DATE	CODE	SIZE	DWG. NO.
DRAWN	DATE	82679	C	MS6029
		SCALE 1/1	SHEET OF	
				ISSUE Ø