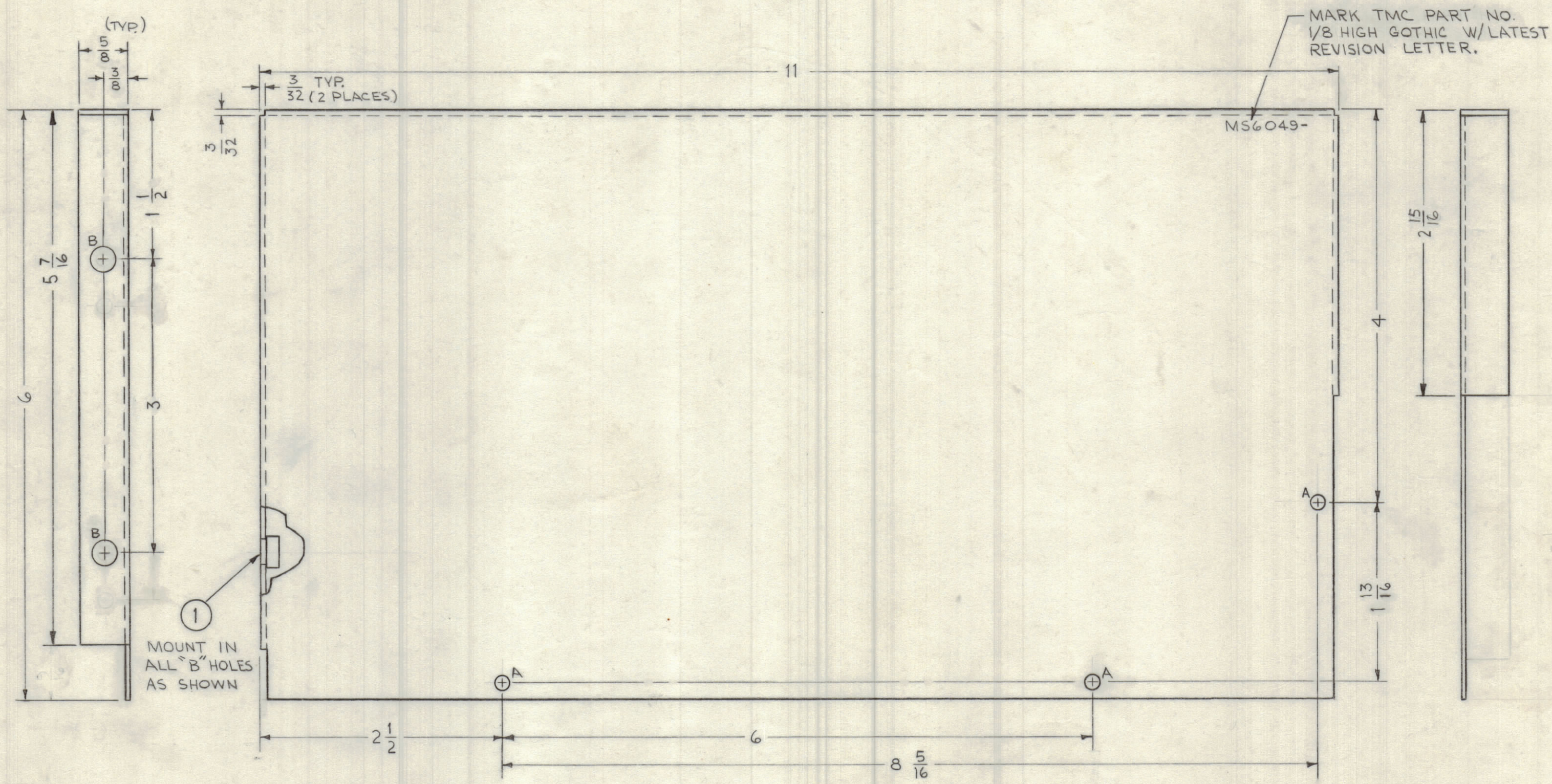


TMC PART NO.	DESCRIPTION
MS6049-1	AS SHOWN (RIGHT SIDE)
MS6049-2	OPP. HAND (LEFT SIDE)

REVISIONS						
SYM	ZONE	DESCRIPTION	DATE	E.M.N.NO.	DRAFT	CHKD APPD
X		EXPERIMENTAL RELEASE	12-14-66	X	RME	
X1		CHG'D 2 "A" HOLES TO "B". "A" WAS 11/64 DIA. CHG'D 1/2 TO 5/8 & 1/4 TO 3/8. ADDED IT. 1 RELOC P/N CHART.	12-21-66	X1	RME	<i>Jde</i>
X2		B HOLES WERE .250-.253 DIA.	12-30-66	X2	<i>Jde</i>	
X3		REDIM. SIDE VIEWS FROM BEND. ADD 3/32 DIM. 2 PLACES	3/8/67	X3	RME	<i>Jde</i> <i>AB</i>
Ø		FINAL RELEASE FOR PRODUCTION	3-14-67		L.A.K.	



1 MOUNT IN ALL "B" HOLES AS SHOWN

HOLE LEGEND		
HOLE	DESCRIPTION	REQ'D
A	11/64 DIA.	3
B	.221 - .224 DIA	2

- UNLESS OTHERWISE SPECIFIED:
1. USE MATERIAL THICKNESS FOR MAXIMUM RADIUS ON ALL BENDS
 2. ALL ANGULAR BENDS 90 DEGREES
 3. REMOVE ALL BURRS AND SHARP EDGES
 4. MOUNT INSERTS AFTER FINISHING

UNLESS OTHERWISE SPECIFIED DIMENSIONS ARE IN INCHES
 TOLERANCES ON
 FRACTIONS DECIMALS ANGLES
 ±1/64 ±.005 ±1/2°

MATERIAL
 .063 THK. ALUMINUM
 5052-H32

QTY/UNIT	MODEL USED ON	ASSY NO.
	SBT-350WAXI	

MAXIMUM ALLOWABLE TOLERANCES HAVE BEEN DETERMINED AND ANY DEVIATIONS WILL BE CAUSE FOR REJECTION.

QTY REQ	ITEM	PART NO.	DESCRIPTION	SYMBOL
2	1	NT129-832-4	NUT, PLAIN, SPLINE	B

GIBSON BILL OF MATERIAL

THE TECHNICAL MATERIEL CORP.
 MAMARONECK, NEW YORK

PLATE, SIDE, RIGHT & LEFT

APPROVED FOR BUSHIPS	CODE	SIZE	DWG. NO.	ISSUE
CONTRACT NO.	82679	C	MS6049	Ø
	SCALE		SHEET	OF

FINISH
 5404 YELLOW IRIDITE

APPROVED FOR BUSHIPS
 CONTRACT NO.

CODE 82679
 SIZE C
 DWG. NO. MS6049
 ISSUE Ø