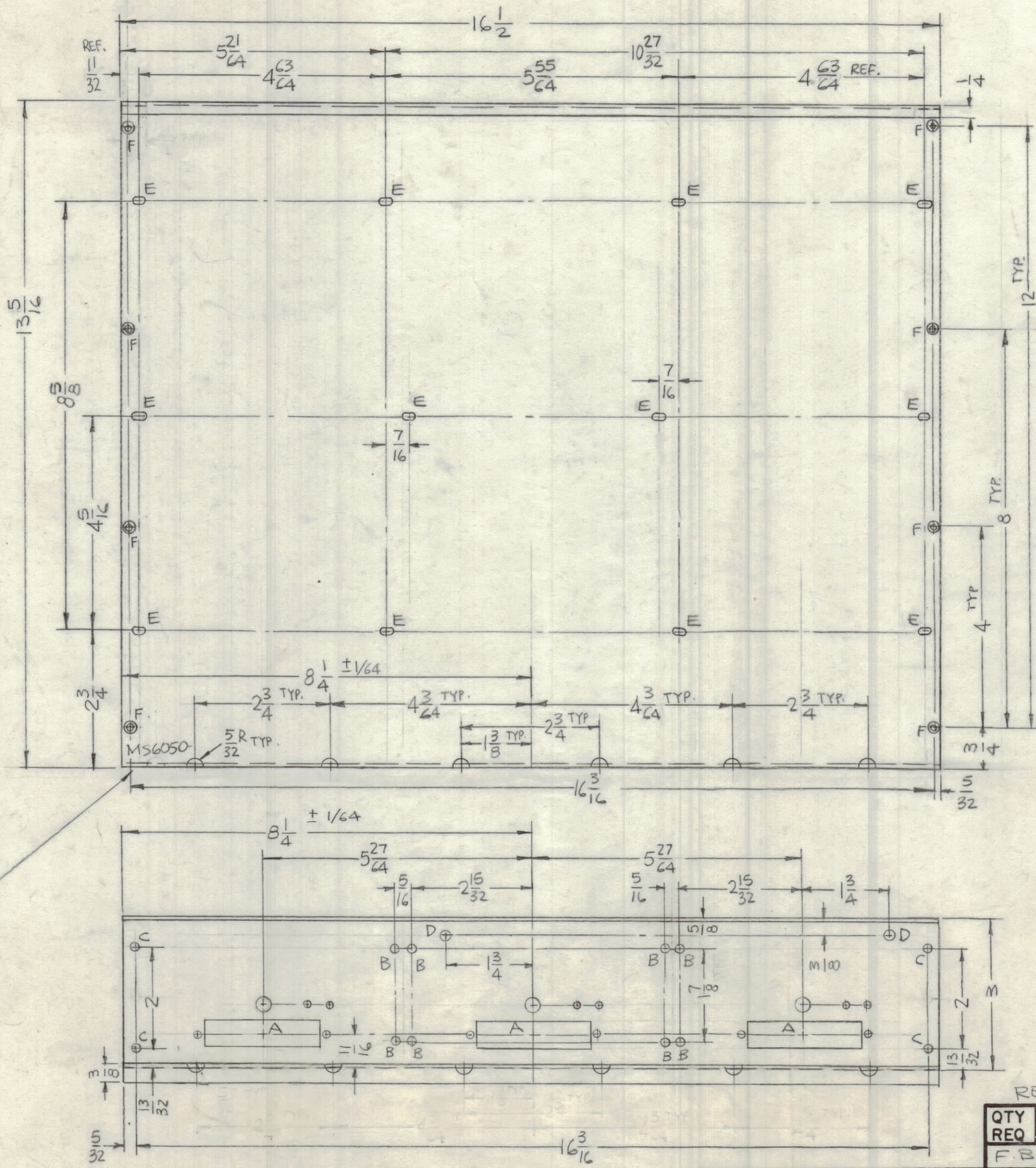
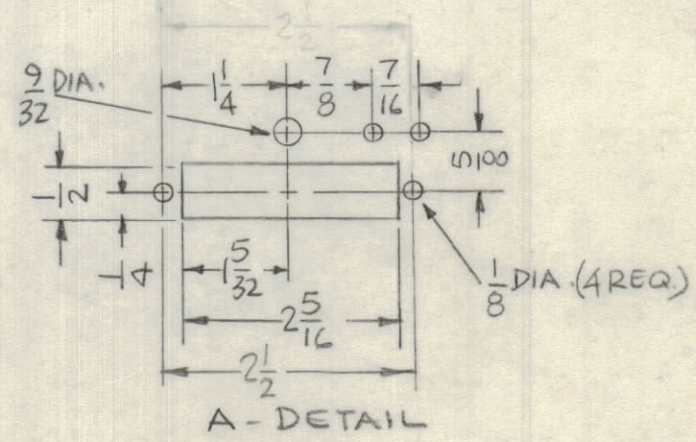


REVISIONS						
SYM	ZONE	DESCRIPTION	DATE	E.M.N.NO.	DRAFT	CHKD APPD
X		EXP. RELEASE	12-6-64			
X1		7/16 DIM ON A' DETAIL RELOCATED	1-10-66			
Ø		ORIGINAL RELEASE FOR PRODUCTION	1/11/67	Ø	CV	



HOLES	DESCRIPTION	REQ
A	SEE DETAIL	3
B	9/64 DIA	8
C	11/64 DIA	4
D	13/64 DIA	2
E	1/8 X 3/16 SLOT	12
F	.144 DIA. C'SINK 82° TO .284 D.	6



MARK TMC P/N  
1/8 HIGH GOTHIC  
W/LATEST REV.  
LETTER.

UNLESS OTHERWISE SPECIFIED:  
1. USE MATERIAL THICKNESS FOR MAXIMUM RADIUS ON ALL BENDS  
2. ALL ANGULAR BENDS 90 DEGREES  
3. REMOVE ALL BURRS AND SHARP EDGES

MAXIMUM ALLOWABLE TOLERANCES HAVE BEEN DETERMINED AND ANY DEVIATIONS WILL BE CAUSE FOR REJECTION.

REF: LD1515

QTY REQ	ITEM	PART NO.	DESCRIPTION	SYMBOL
	F. BUDETTI		BILL OF MATERIAL	
UNLESS OTHERWISE SPECIFIED DIMENSIONS ARE IN INCHES TOLERANCES ON FRACTIONS DECIMALS ANGLES ±1/64 ±.005 ±1/2°		FINAL APPROVAL <i>[Signature]</i>	DATE 1/11/67	THE TECHNICAL MATERIEL CORP. MAMARONECK, NEW YORK
MATERIAL .064 THICK ALUM 5052-H32		MECH. DES. <i>[Signature]</i>	DATE	
FINISH S404 YEL. IRIDITE		ELECT. DES. <i>[Signature]</i>	DATE	
		CHECKED <i>[Signature]</i>	DATE	
		DRAWN <i>[Signature]</i>	DATE 12-6-64	CHASSIS SERVO AMPL
		APPROVED FOR BUSHIPS	DATE	
		CONTRACT NO.		CODE 82679
				SIZE C
				DWG. NO. MS6050
				ISSUE Ø
				SCALE
				SHEET OF