

4

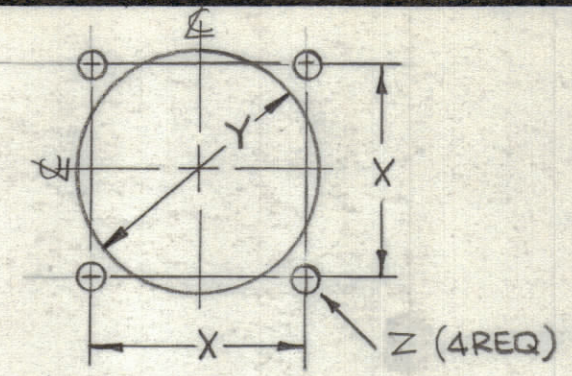
3

2

1

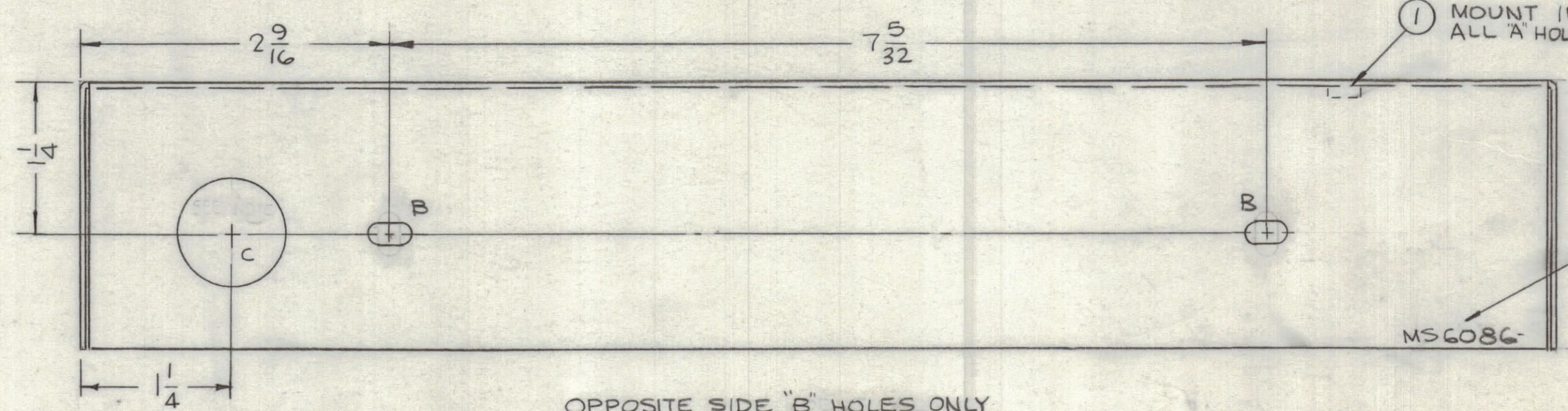
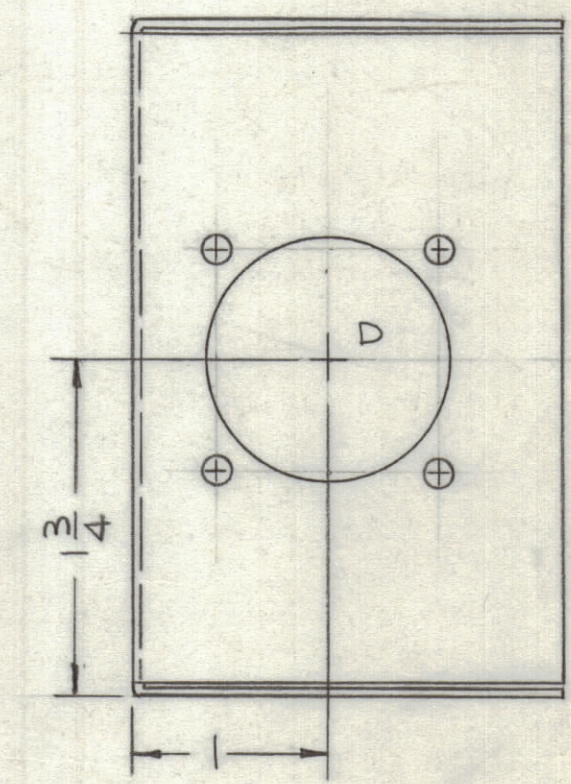
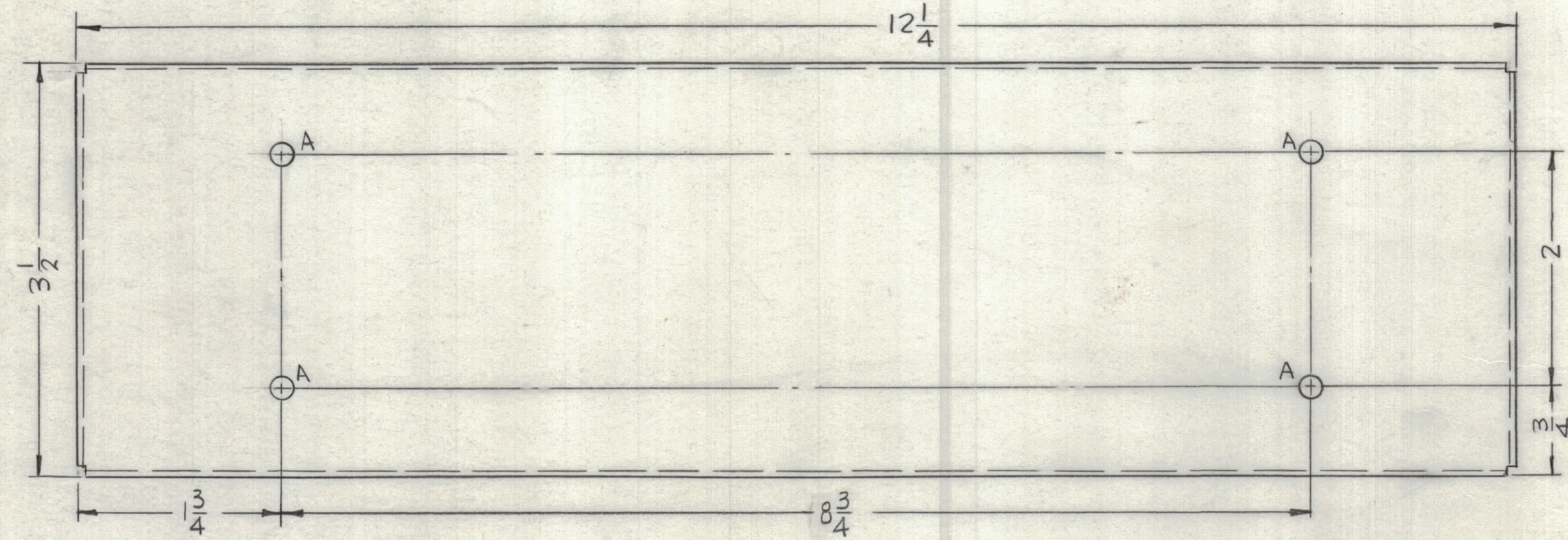
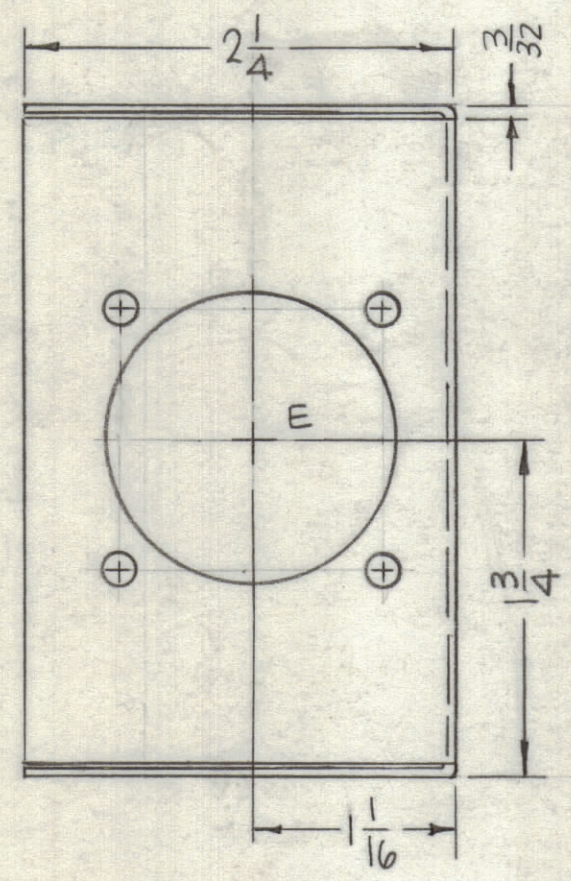
HOLES	DESCRIPTION	REQ
A	.191-.194 DIA.	4
B	11/64 X 11/32 SLOT	4
C	7/8 DIA.	1
D	SEE DETAIL	1
E	SEE DETAIL	1

DETAIL	X	Y DIA.	Z DIA.
D	1-5/32	1-5/16	9/64
E	1-3/8	1-9/16	11/64



DETAILS-D&E

REVISIONS							
ZONE	LTR	DESCRIPTION	DATE	E.M.N.NO	DRAFT	CHKD	APPD
	X	EXP. RELEASE	2-6-67				
	Ø	ORIGINAL RELEASE FOR PRODUCTION	4-6-67	Ø	CV		



1 MOUNT IN ALL 'A' HOLES

MARK TMC P/N 1/8 HIGH GOTHIC W/LATEST REV. LETTER.

MSG6086

OPPOSITE SIDE 'B' HOLES ONLY THIS SIDE 'B' & 'C' HOLE.

QTY. REQ.	ITEM	PART NO.	DESCRIPTION	SYMBOL
4	1	NT129-632-4	NUT, PLAIN, SPLINE	A

F. BUDETTI LIST OF MATERIAL			
FINAL APPROVAL	DATE	THE TECHNICAL MATERIEL CORP.	
MECH. DES.	DATE	MAMARONECK, NEW YORK	
ELECT. DES.	DATE	CHASSIS, ELECTRICAL	
CHECKED	DATE		
DRAWN	DATE		

QTY / UNIT	MODEL USED ON	ASS'Y NO.
1	SBT-1K PA2	AF-108
1	SBT-1K PA1	AF-108

NOTICE TO PERSONS RECEIVING THIS DRAWING
 THE TECHNICAL MATERIEL CORPORATION claims proprietary right in the material disclosed hereon. This drawing is issued in confidence for engineering information only and may not be reproduced or used to manufacture anything shown hereon without permission from THE TECHNICAL MATERIEL CORPORATION to the user. This drawing is loaned for mutual assistance and is subject to recall at any time.

- UNLESS OTHERWISE SPECIFIED:
1. USE MATERIAL THICKNESS FOR MAXIMUM RADIUS ON ALL BENDS
 2. ALL ANGULAR BENDS 90 DEGREES
 3. REMOVE ALL BURRS AND SHARP EDGES
 4. MOUNT INSERTS AFTER FINISHING

SIZE	CODE IDENT. NO.	DWG NO.	ISSUE
.C	82679	MSG6086	Ø

SCALE 1:1 SHEET OF

4

3

2

1

MS6086