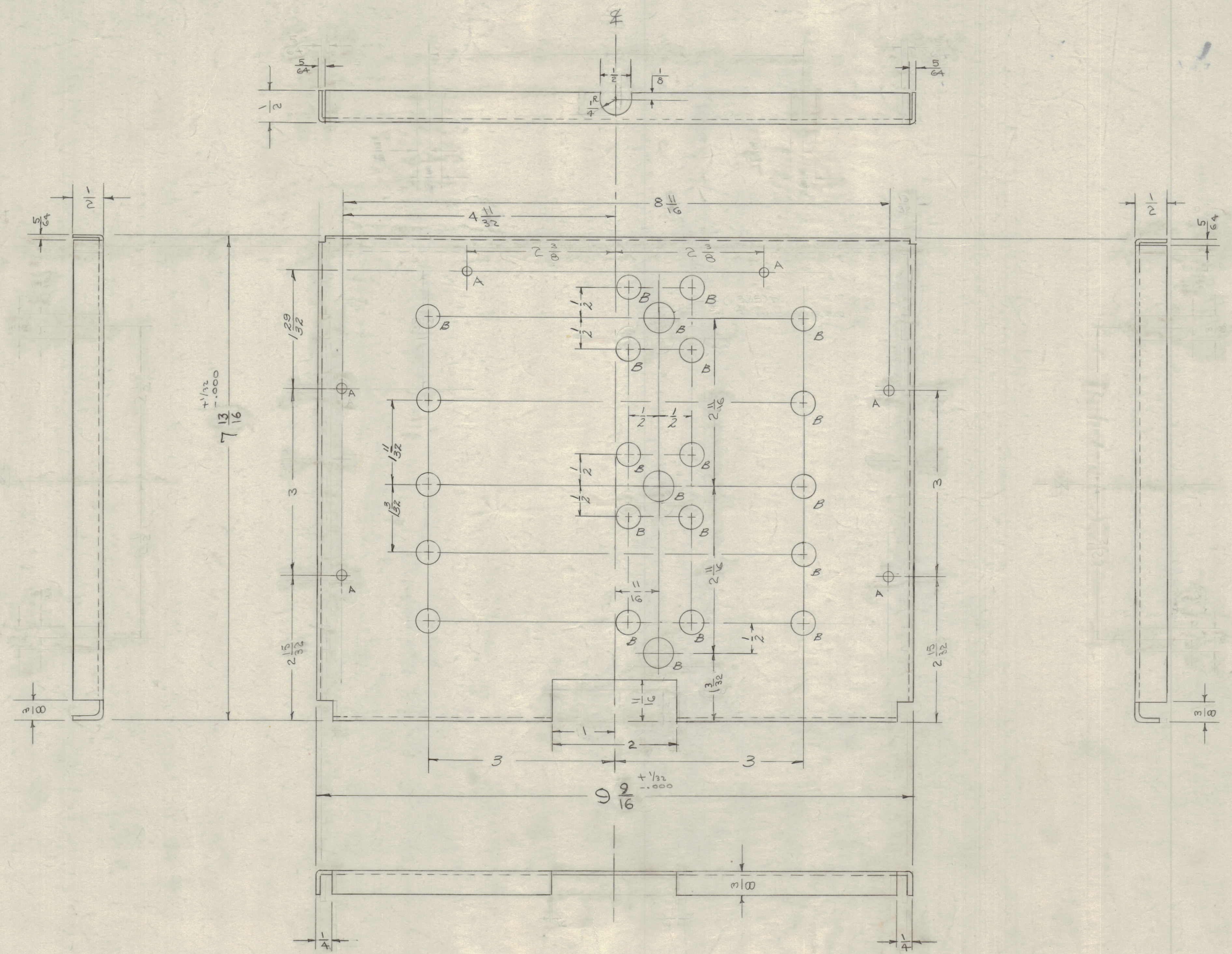


IF IT IS FOUND DESIRABLE TO CHANGE ANY TOLERANCE OR OTHER DETAIL SPECIFIED ON THIS DRAWING NOTIFY THE PURCHASER PROMPTLY.
 MAXIMUM ALLOWABLE TOLERANCES HAVE BEEN DETERMINED AND DEVIATIONS WILL BE CAUSE FOR REJECTION. REMOVE ALL BURRS AND SHARP EDGES

NOTICE TO PERSONS RECEIVING THIS DRAWING

THE TECHNICAL MATERIEL CORPORATION claims proprietary right in the material disclosed herein. This drawing is issued in confidence for engineering information only and may not be reproduced or used to manufacture anything shown hereon without permission from THE TECHNICAL MATERIEL CORPORATION to the user. This drawing is loaned for mutual assistance and is subject to recall at any time.

Property of:
 THE TECHNICAL MATERIEL CORPORATION
 MAMARONECK, NEW YORK



- HOLES**
- A- $\frac{3}{16}$ (.187) DIA. HOLES 4 REQ.
 - B- $\frac{3}{8}$ (.375) DIA. HOLES 20 REQ.

G	1	S-404 IRIDITE WAS	10/1/59	1001	A.B.	EMN
F	1	ADDED 20 "B" HOLES	7/10/58	411	HR	HR
E	1	3/8" WAS 1/2"	4/24/57	5	EC	HR
D	1	SLOT ADDED	4/16/57	4	EC	HR
C	2	2 "A" HOLES ADDED	7/31/56	3	ESD	HR
B	1	2 1/2" WAS 2 7/16"	4/11/57	2	HR	HR
A	5	"A" HOLES WERE 1/32"				
	4	HOLES WERE 3/16"				
	3	8 1/16 WAS 8 3/4"				
	2	7 13/16 WAS 7 3/4"				
	1	1/16 WAS 1/2"				

ISSUE	ITEM	CHANGED FROM	DATE	CN. NO.	DRAFTS	CHECKER	ENG. APP.
TOLERANCES		SCALE:					
ALL OTHERS	DEC. DIM. ± .005	DRILL, PUNCH, COMMERCIAL STOCK SIZES AND MANUFACTURERS TOLERANCES ARE NOT INCLUDED.					
	FRAC. DIM. ± 1/64						
	ANGULAR DIM. ±						

REF. DWG. MS-621

REQ. ITEM	PART NO.	DESCRIPTION	SYMBOL
	.064	THE TECHNICAL MATERIEL CORP. MAMARONECK, NEW YORK	
STOCK SIZE		COVER, R.F.	
ALUMINUM		TOP	
MATERIAL	WEIGHT PER PC.		
525 H 32			
TYPE & TEMPER		CDD 2-11-55	HR
		HR	HR
HEAT TREAT. SPEC.		G.T.O	
FINISH & SPEC. NO.		MS-618 G	

1	GPR	297		2-11-55
REQ PER UNIT	MODEL	PROJECT NO.	ASSY. NO.	DATE
USED ON				

MS-618 G