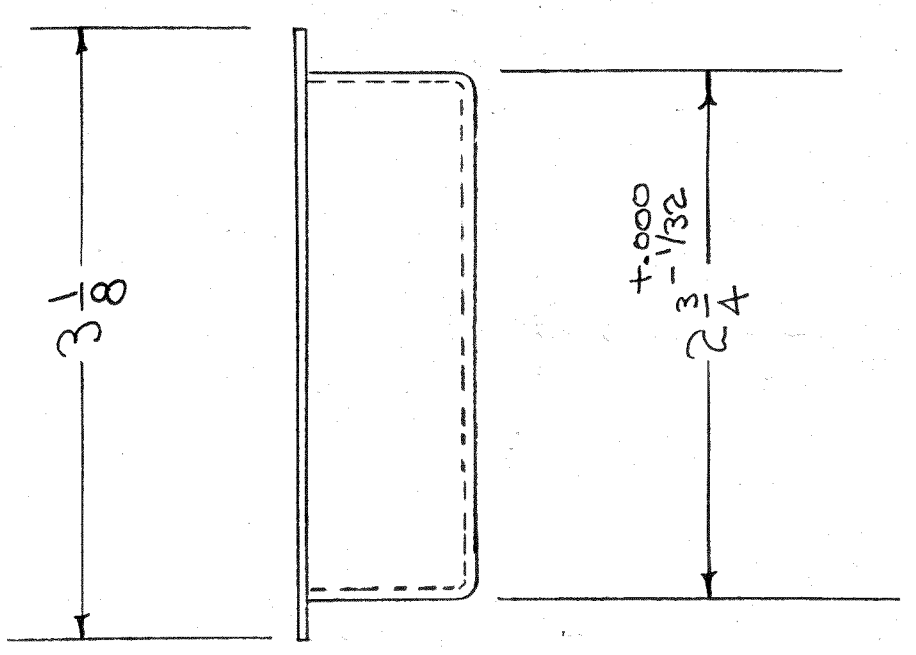
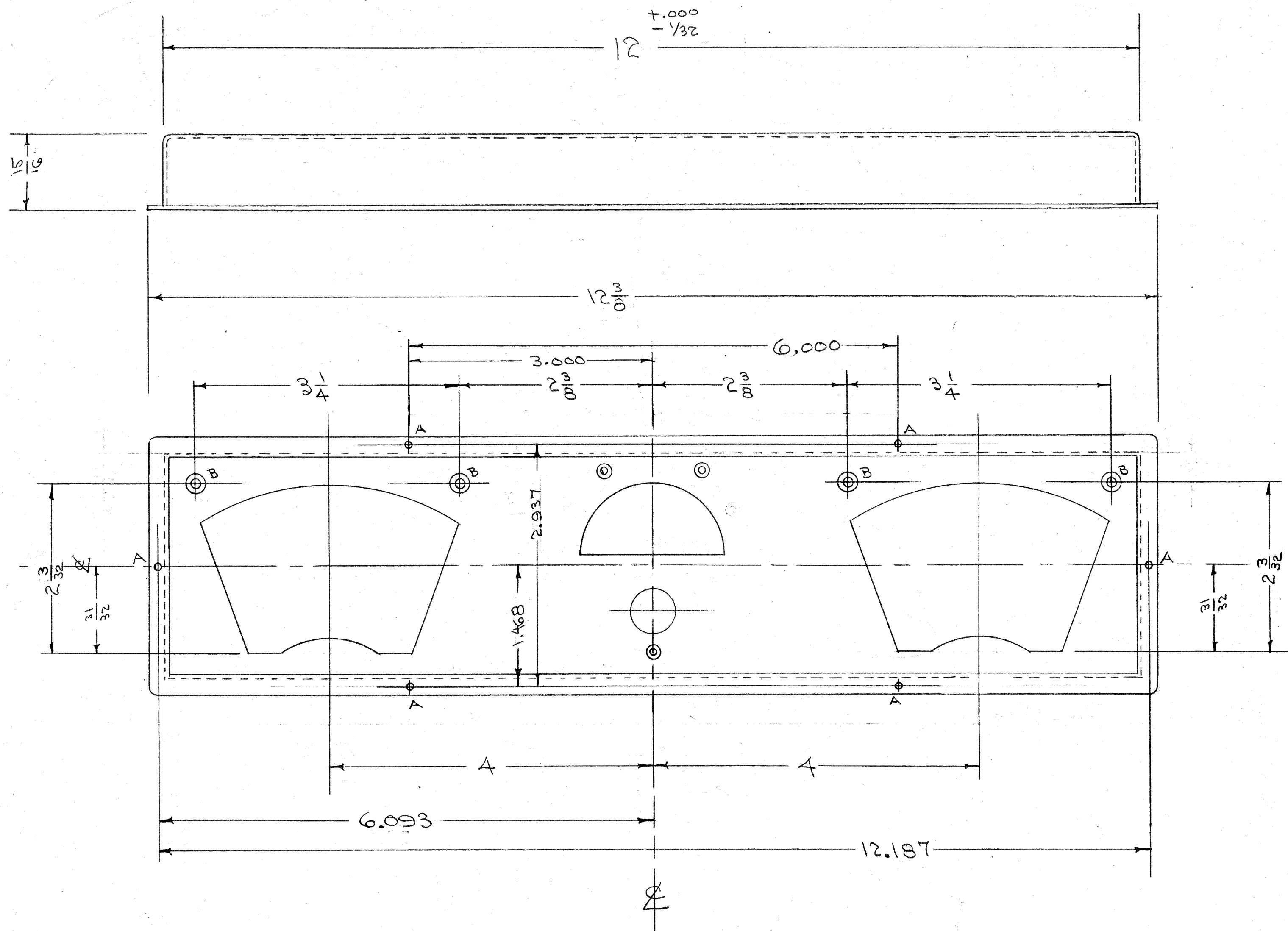


IF IT IS FOUND DESIRABLE TO CHANGE ANY TOLERANCE OR OTHER DETAIL SPECIFIED ON THIS DRAWING NOTIFY THE PURCHASER PROMPTLY.
 MAXIMUM ALLOWABLE TOLERANCES HAVE BEEN DETERMINED AND DEVIATIONS WILL BE CAUSE FOR REJECTION. REMOVE ALL BURRS AND SHARP EDGES

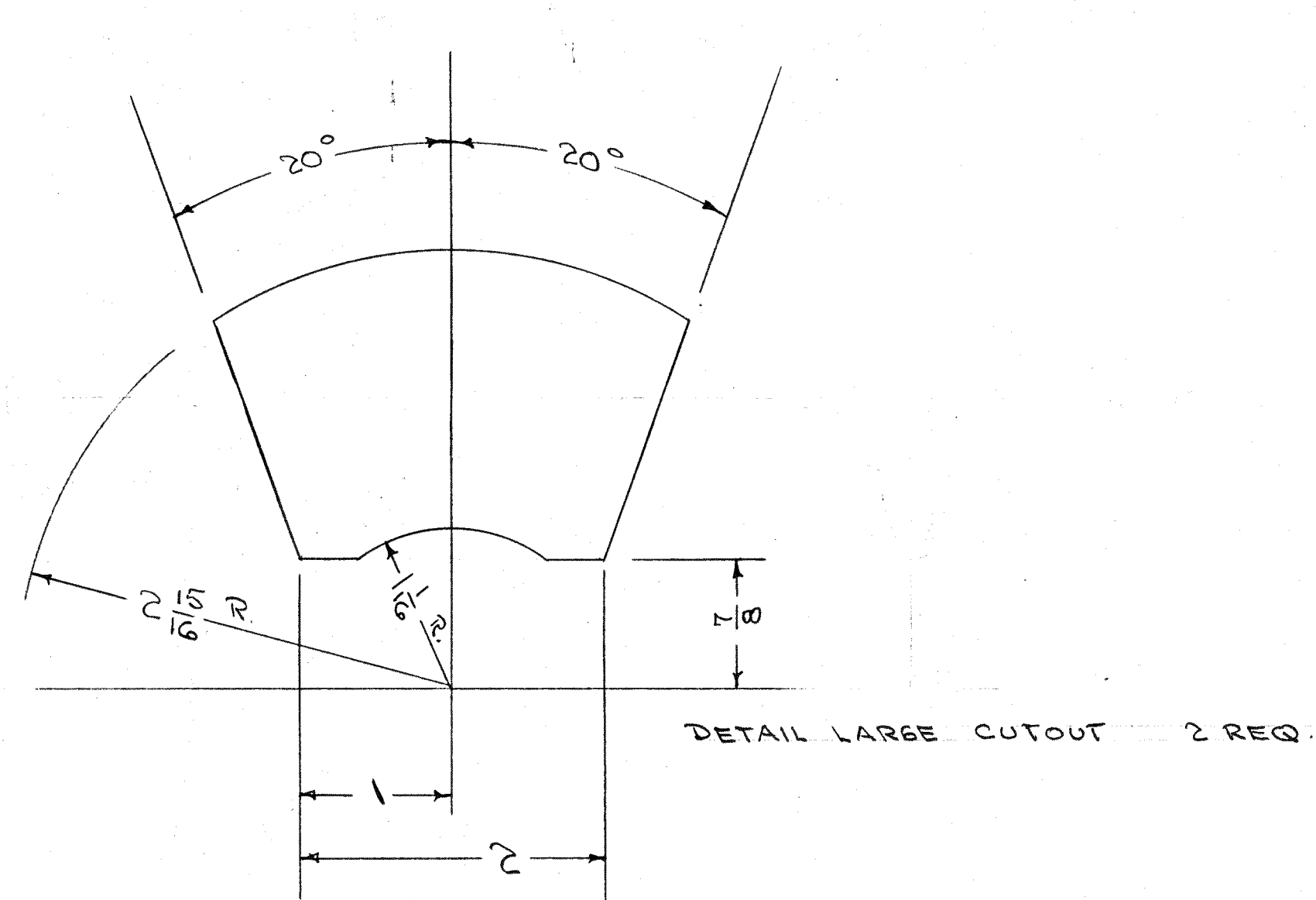
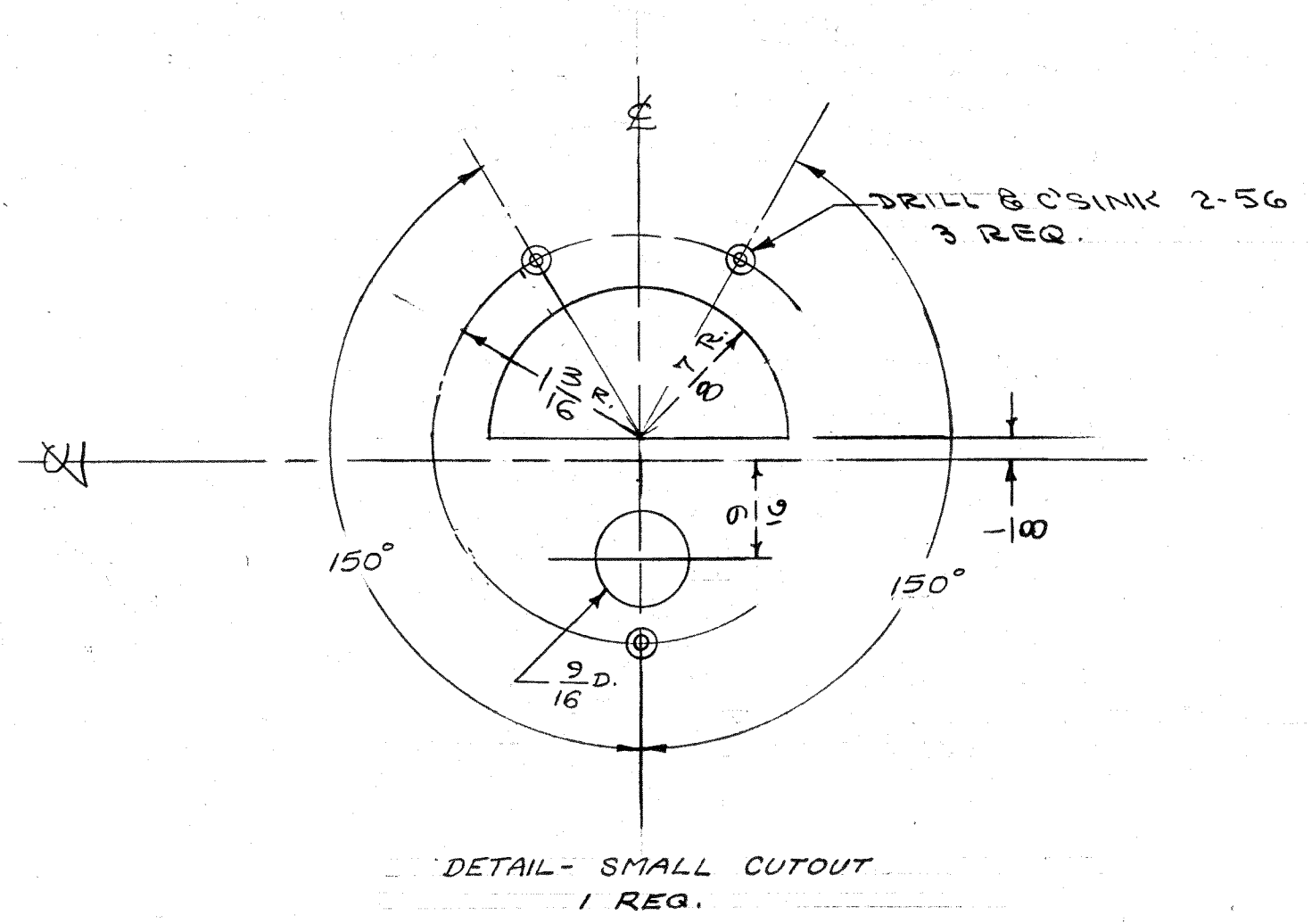
NOTE TO PERSONS RECEIVING THIS DRAWING

THE TECHNICAL MATERIEL CORPORATION claims proprietary right in the material disclosed hereon. This drawing is loaned in confidence for engineering information only and may not be reproduced or used to manufacture copies shown hereon without permission from THE TECHNICAL MATERIEL CORPORATION to the user. It is loaned for mutual assistance and is subject to recall at any time.

Property of:
 THE TECHNICAL MATERIEL CORPORATION
 MAMARONECK, NEW YORK



A - No. 38 (.101) D. 6 HOLES REQ.
 B - DRILL & CSINK #4 F.H.S. 4 " " "



NOTE: FINISH
 S-404 IRIDITE
 S-114 PRIMER
 S-220 P.CAF GRAY.
 OR PRIME & PAINT TO CUSTOMER'S SPECIFICATIONS

ISSUE	ITEM	CHANGED FROM	DATE	CN. NO.	DRAFTS	CHECKER	ENG. APP.
H	1	S-404 IRIDITE WAS S-101 CAUSTIC DIP	12/16/59	1001	AB		EMN
G	1	120° CHAMFER BACK TO 150° (SEE REV. D) "D" REV. WAS NEVER MADE	1/17/61	51	7	16	JAL
F	1	DIMENSIONS AND DIMENSIONING CHANGED	4/28/64	6	ESD	JAL	WJZ
E	2	3/8" DIM. DELETED	6/13/64	5	JAL	ESD	WJZ
D	1	2-56 CSINK 1/16" DIA. 1/16" DEPT. ADDED	7/22/59	4	73	JAL	WJZ
C	2	REF. LINE DELETED	4/1/61	3	ESD	JAL	WJZ
B	1	3/32" DIM. ADDED	6/11/55	2	78	JAL	WJZ
A	1	PAINT SPEC. CHANGED	4/1/55	1	ESD	JAL	GT.O

REF. DWG. MS-607

REQ. ITEM	PART NO.	DESCRIPTION	SYMBOL
.064		THE TECHNICAL MATERIEL CORP. MAMARONECK, NEW YORK	
ALUMINUM	II	ESCUTCHEON	
MATERIAL	WEIGHT PER PC	FRONT PANEL	
250			
TYPE & TEMPER	C.D.B. 2-29-55	III	WJZ
HEAT TREAT. SPEC.		GT.O	
SEE NOTE		CHECKED	FINAL APPROVAL
			MS-623 H

REQ. PER UNIT	MODEL	PROJECT NO.	ASSY. NO.	DATE
1	GPR	297		2-28-55

MS-623 H