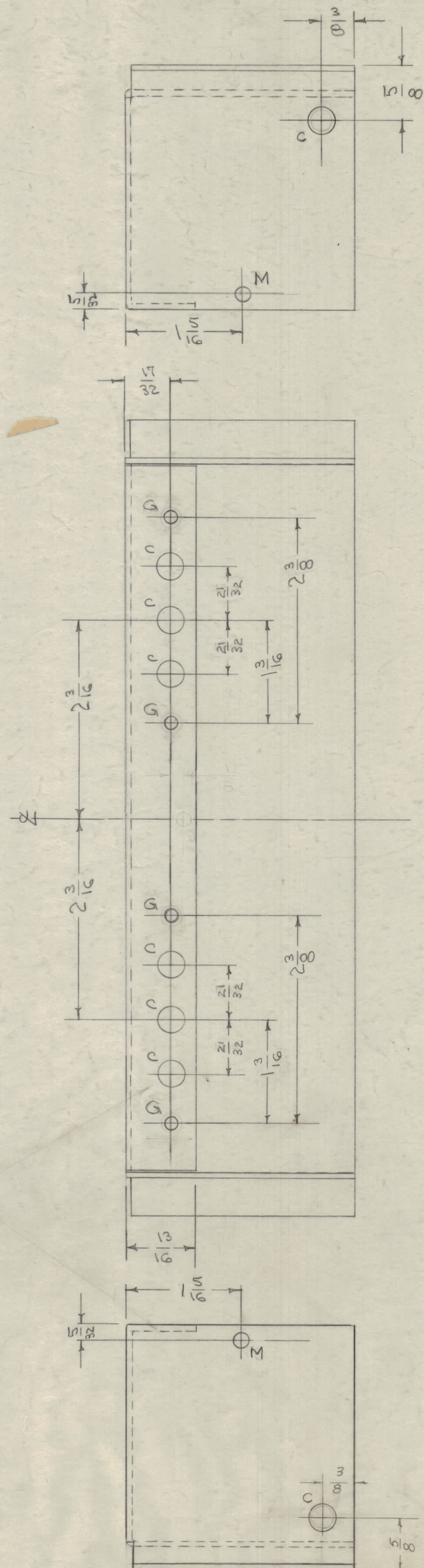
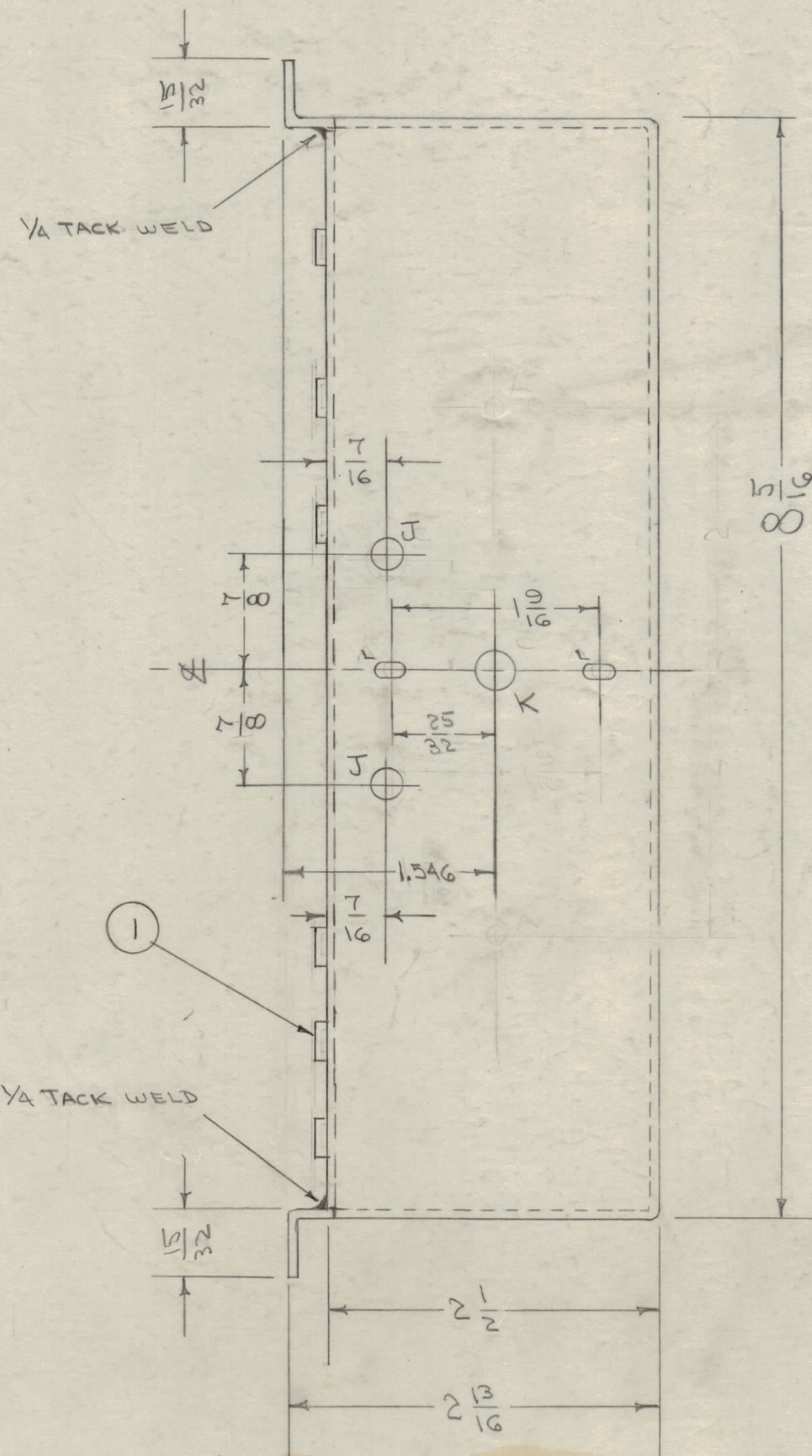
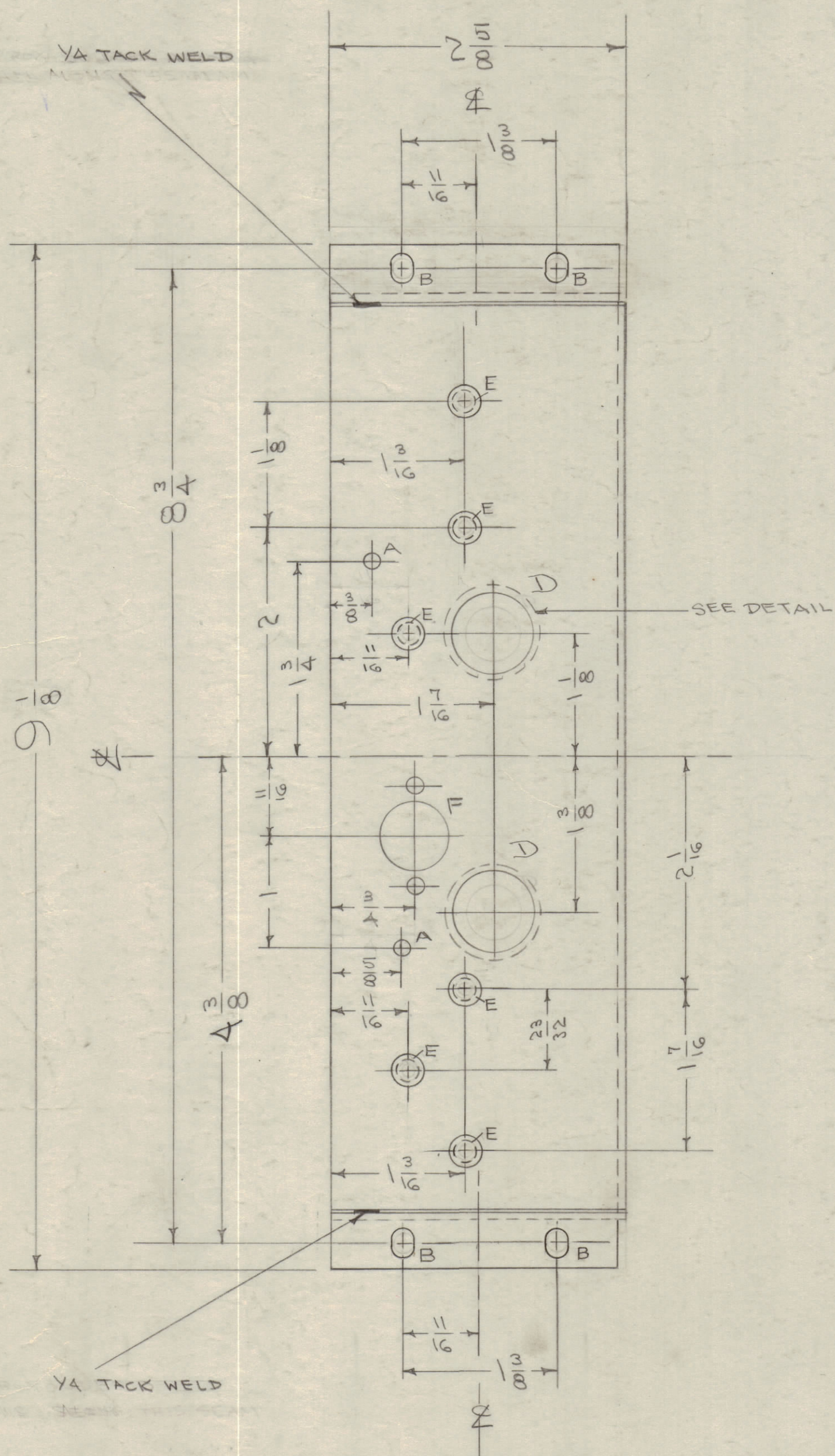


IF IT IS FOUND DESIRABLE TO CHANGE ANY TOLERANCE OR OTHER DETAIL SPECIFIED ON THIS DRAWING NOTIFY THE PURCHASER PROMPTLY.
 MAXIMUM ALLOWABLE TOLERANCES HAVE BEEN DETERMINED AND DEVIATIONS WILL BE CAUSE FOR REJECTION. REMOVE ALL BURRS AND SHARP EDGES

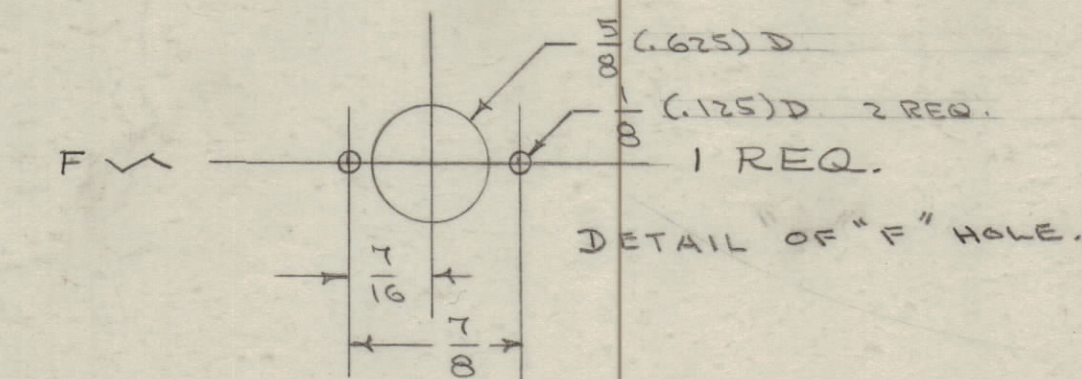
NOTICE TO PERSONS RECEIVING THIS DRAWING

THE TECHNICAL MATERIEL CORPORATION claims proprietary right in the material disclosed hereon. This drawing is issued in confidence for engineering information only and may not be re-used or used to manufacture any item shown hereon without permission from THE TECHNICAL MATERIEL CORPORATION to the user. This drawing is loaned for mutual assistance and is subject to recall at any time.

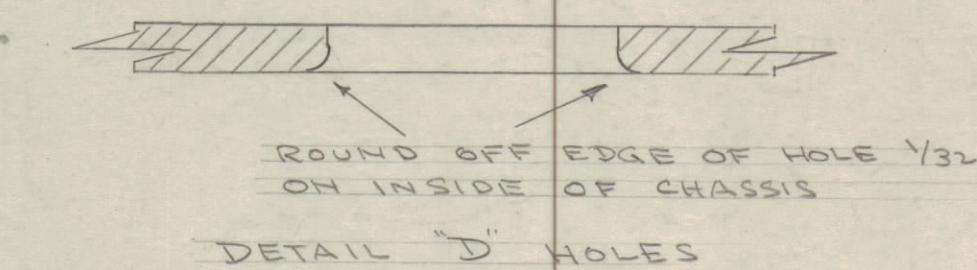
Property of:
 THE TECHNICAL MATERIEL CORPORATION
 MAMARONECK, NEW YORK



- A - 9/64 DIA. HOLES 2 REQ.
- B - 3/16 X 1/4 SLOTS 4 REQ.
- C - 5/16 DIA. HOLES 8 REQ.
- D - 3/4 DIA. HOLES 2 REQ.
- E - 1/32 DIA. HOLES 6 REQ.



- G - 1/64 (.171) D. 4 HOLES REQ.
- J - 1/4 (.250) D. 2 " "
- K - 3/8 (.375) D. 1 " "
- L - 1/8 X 1/4 SLOTS 2 " "
- M - 1/64 D. HOLES 2 REQ.



L	2	1/8" HOLES WERE 5/32 TAPS	8/10/50	27	2	CA	JCB	
	1	B'SLOTS WERE 13/64 D.						
K	1	S-404 CAUSTIC DIP	12/1/59	100	1	AB	EMN	
J	1	2" C HOLES WERE 1/2 HOLES	5/21/57	9	8	16		
H	1	TACK WELD WAS SEAM WELD	1/24/57	8	16			
G	2	ROUND SIZE WAS 5/16 X 13/16	8/14/50	7	13			
F	1	1/8" HOLE DELETED	11/10/55	6	13			
E	1	1/2" HOLE ADDED	10/7/55	5	13			
D	2	1/8" HOLES WERE 1/16	8/9/50	4	13			
C	1	1/8" HOLE ADDED	8/21/55	3	13			
B	2	D HOLE DETAIL ADDED	7/10/55	2	13			
A	1	COMPLETE REVISION	9/14/55	1	13			
ISSUE	ITEM	CHANGED FROM	DATE	CH. NO.	DRAFTS	CHECKER	ENG. APP.	
TOLERANCES		SCALE:						
ALL OTHERS	DEC. DIM. ± 1/64 FRAC. DIM. ± 1/64 ANGULAR DIM. ±	DRILL, PUNCH, COMMERCIAL STOCK SIZES AND MANUFACTURERS TOLERANCES ARE NOT INCLUDED.						

REQ PER UNIT	MODEL	PROJECT NO.	ASSY. NO.	DATE
1	GPR	297		3-4-55
USED ON				

6	1	NT.129.632-4	SWAGE NUT	
REQ. ITEM	PART NO.	DESCRIPTION	SYMBOL	
.064		THE TECHNICAL MATERIEL CORP. MAMARONECK, NEW YORK		
STOCK SIZE		ALUMINUM - #	CHASSIS	
MATERIAL		529 H32	R.F. SECTION	
TYPE & TEMPER		###	G.T.O	
HEAT TREAT. SPEC.		###	G.T.O	
FINISH & SPEC. NO.		S-404 1R1015	MS-625 L	

MS-625 L