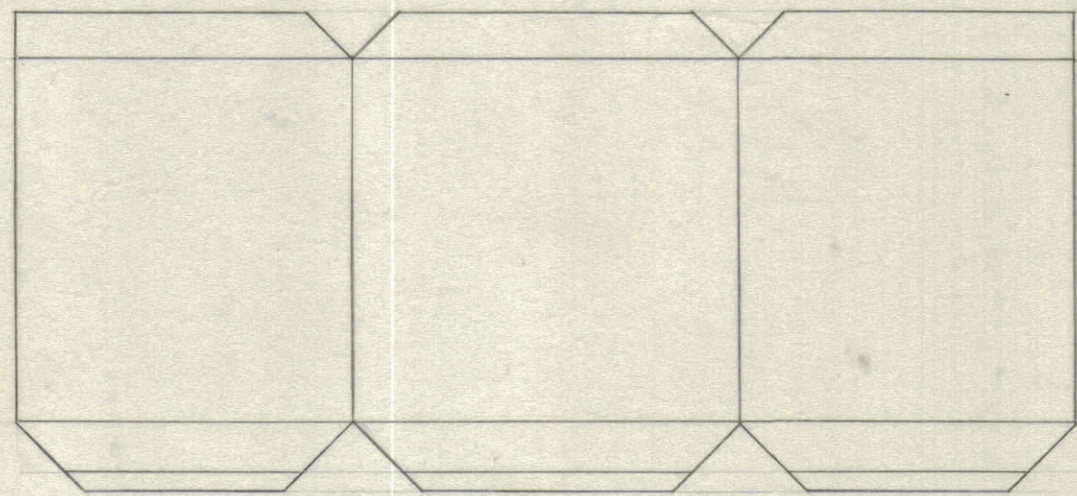
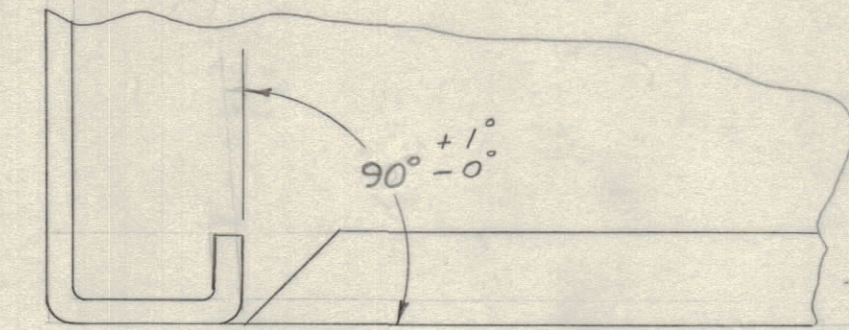
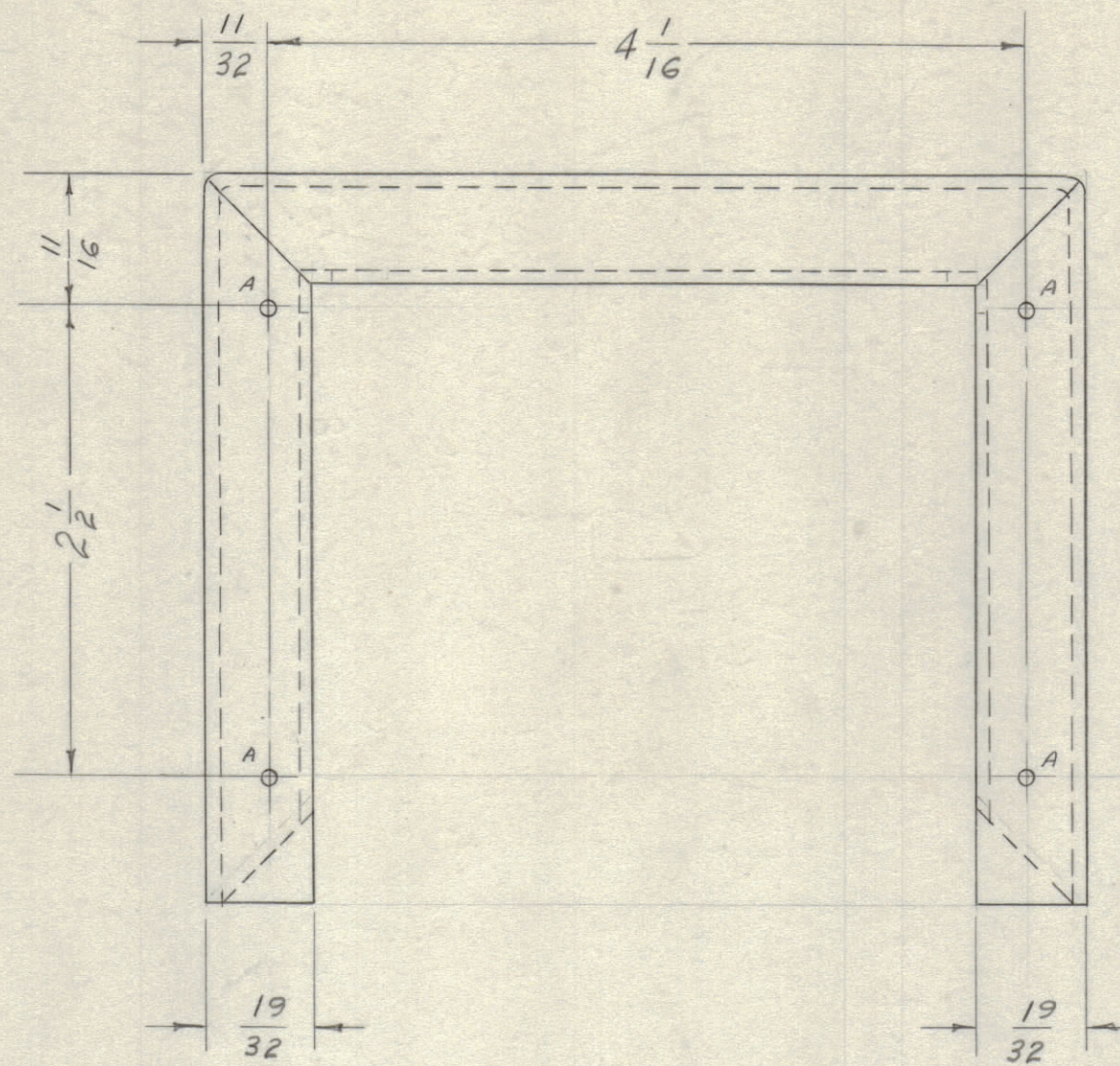


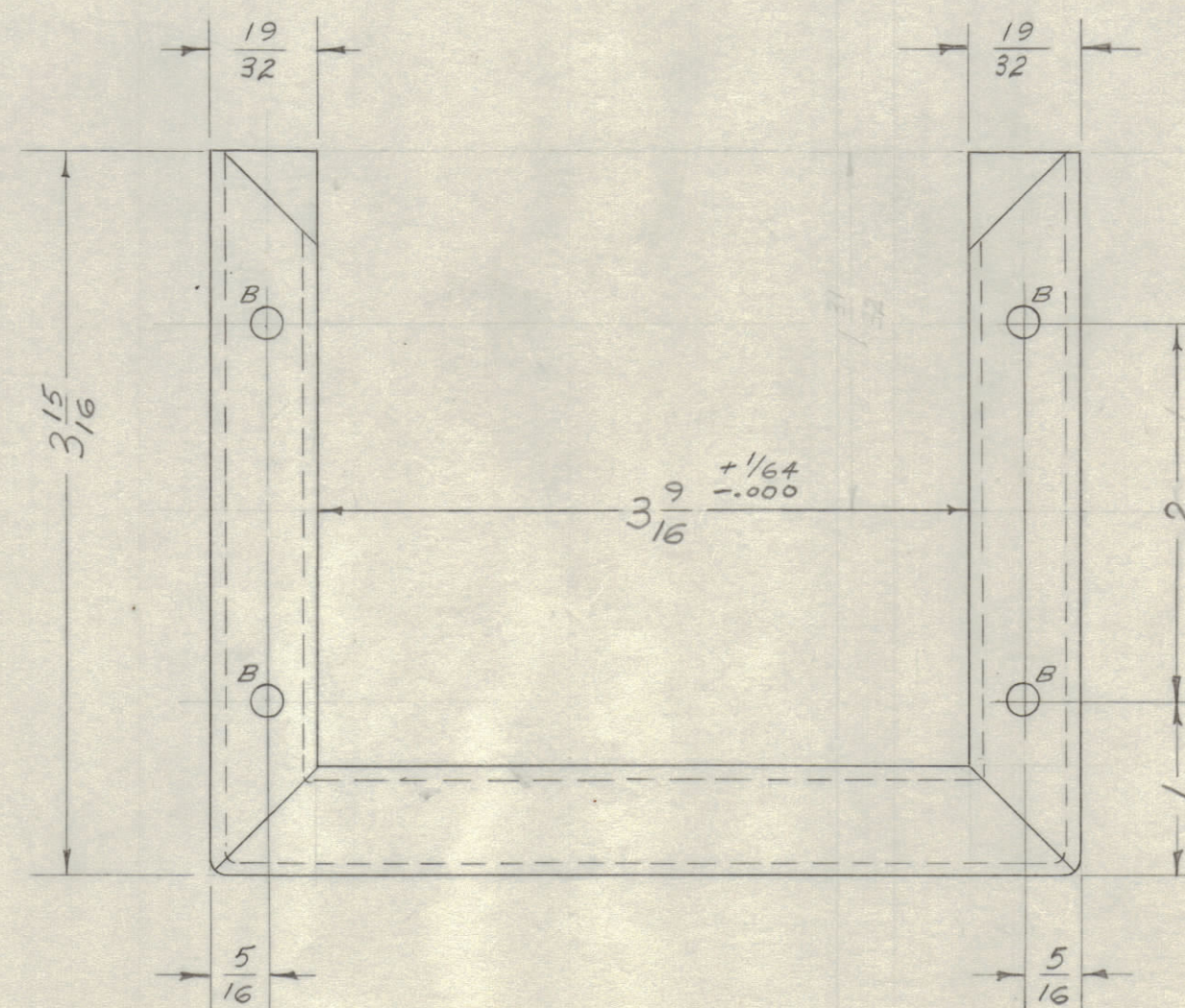
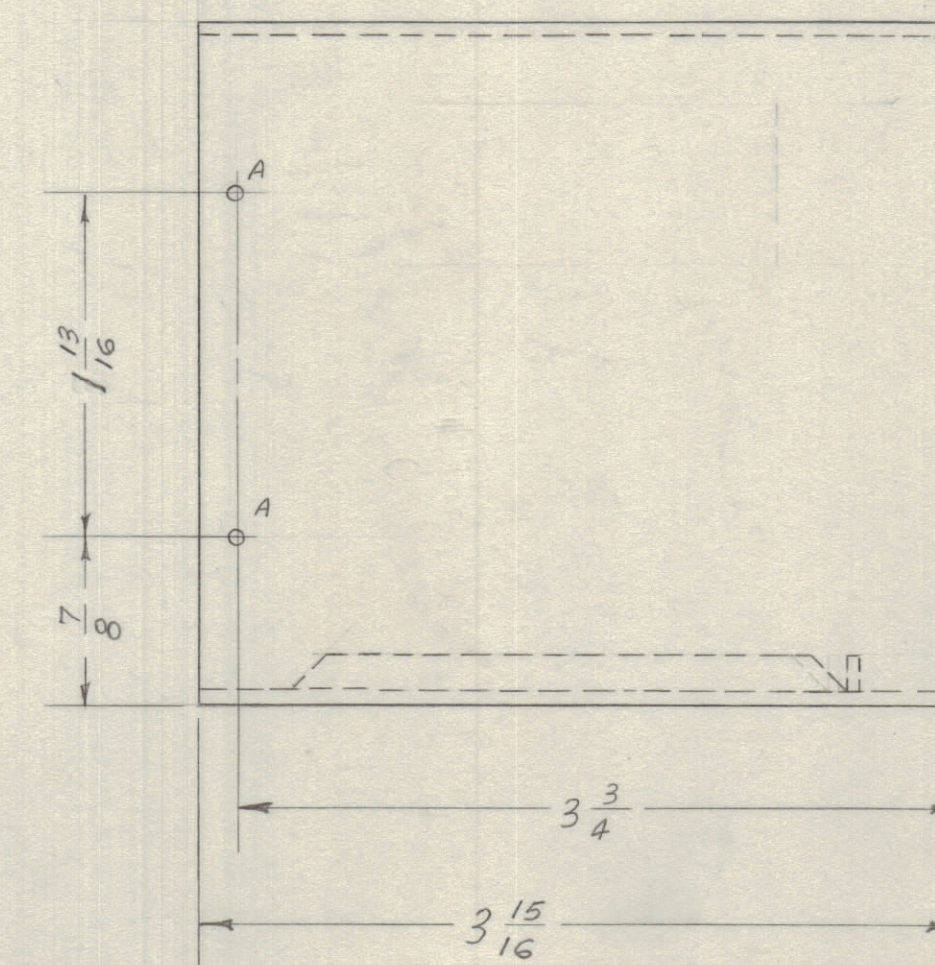
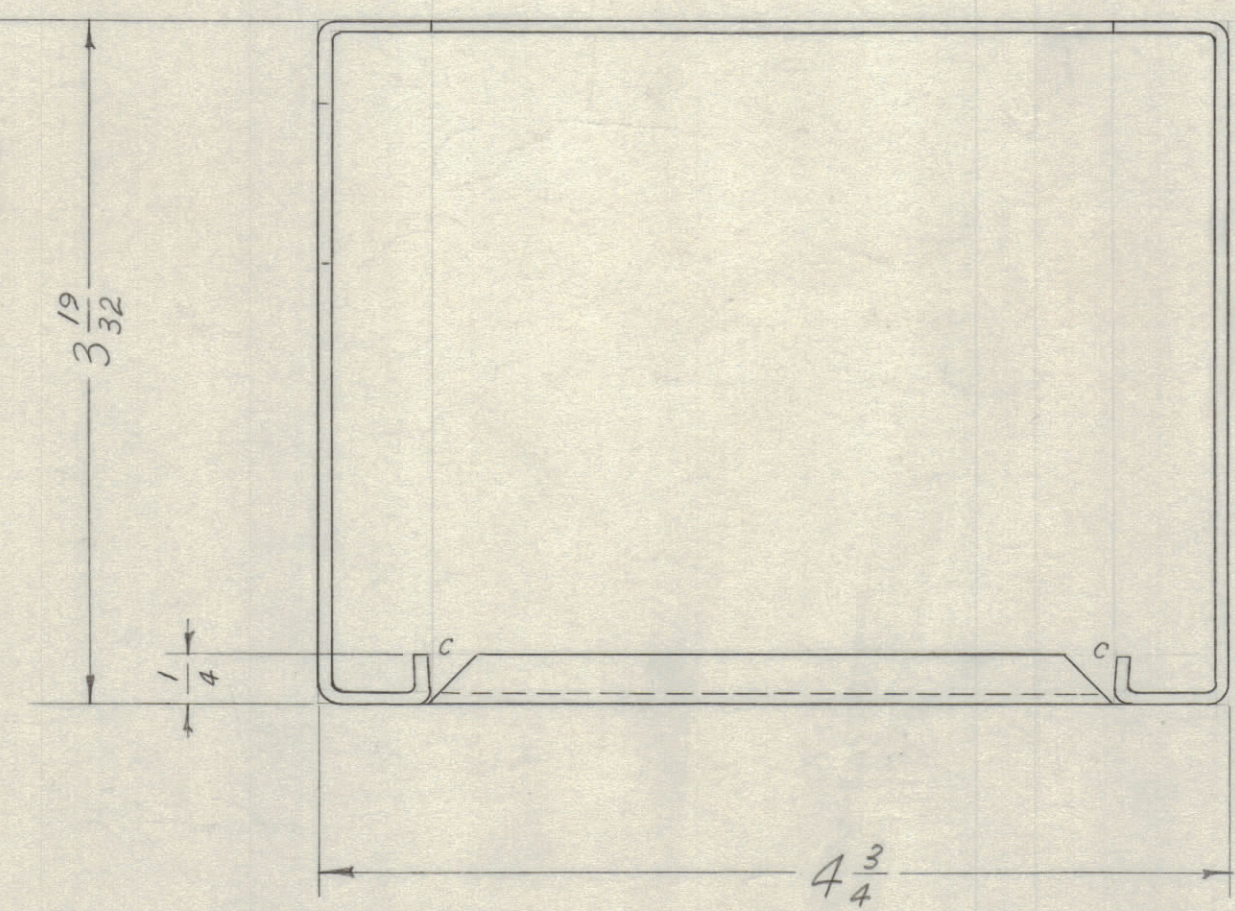
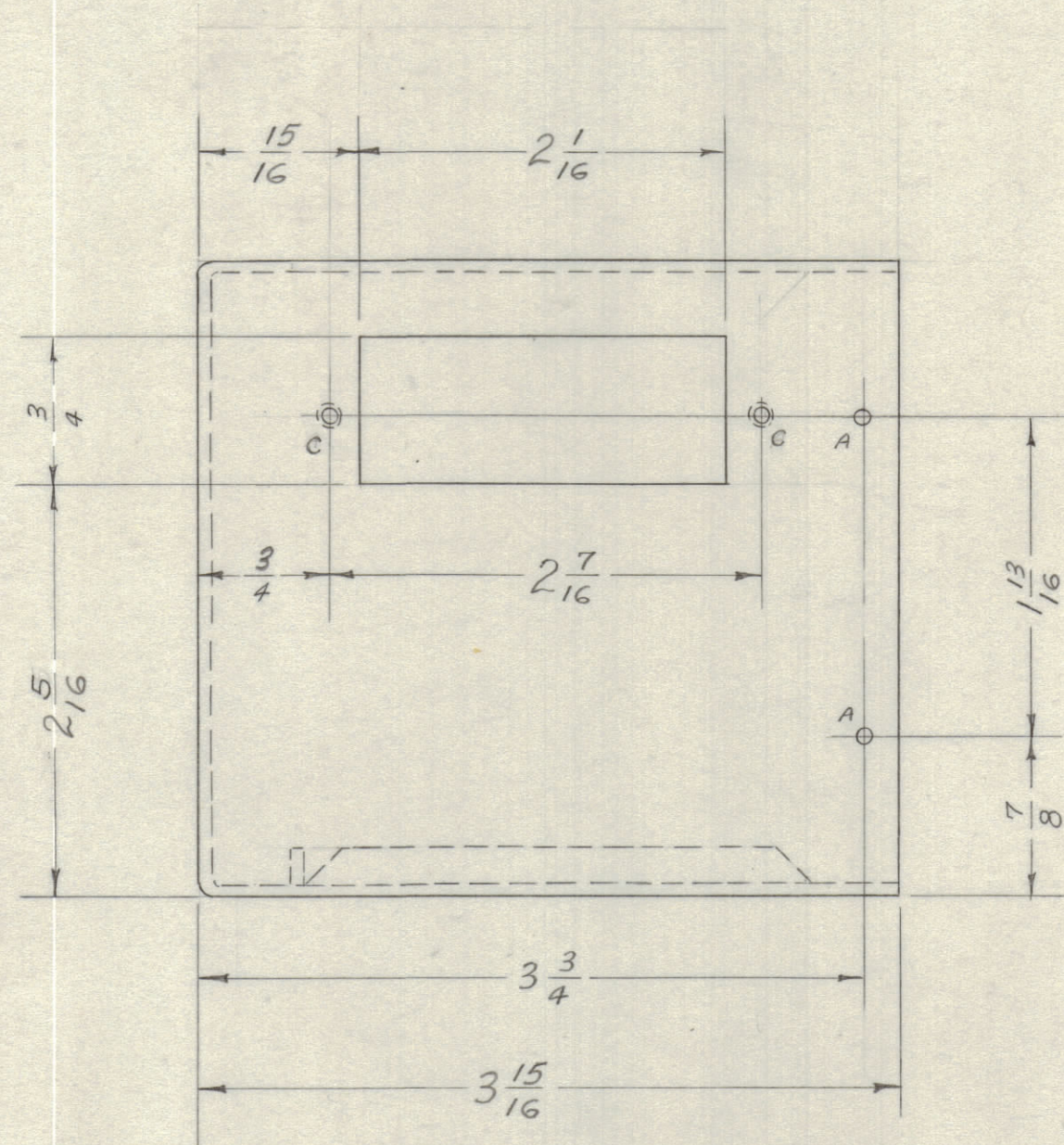
IF IT IS FOUND DESIRABLE TO CHANGE ANY TOLERANCE OR OTHER DETAIL SPECIFIED ON THIS DRAWING NOTIFY THE PURCHASER PROMPTLY.
 MAXIMUM ALLOWABLE TOLERANCES HAVE BEEN DETERMINED AND DEVIATIONS WILL BE CAUSE FOR REJECTION. REMOVE ALL BURRS AND SHARP EDGES



BLANK LAYOUT



ENLARGED DETAIL OF BEND C



A- NO. 45 (.082) DRILL 8 HOLES REQ.
 B- $\frac{1}{32}$ (.218) D. 4 HOLES REQ.
 C- DRILL & TAP $\frac{3}{32}$ 2 " ALL BENDS 90° EXCEPT AS SHOWN"
 ALL INSIDE RADII $\frac{1}{16}$

NOTICE TO PERSONS RECEIVING THIS DRAWING

THE TECHNICAL MATERIEL CORPORATION claims proprietary right in the material disclosed herein. This drawing is issued in confidence for engineering information only and may not be reproduced or used to manufacture anything shown hereon without permission from THE TECHNICAL MATERIEL CORPORATION to the contrary. This drawing is loaned for mutual assistance and is subject to recall at any time.

Property of:
 THE TECHNICAL MATERIEL CORPORATION
 MAMARONECK, NEW YORK

C	1	S-404 IRIDIUM WAS S-101 CAUSTIC DIP	12/8	1001	AB	EMN
B	1	2 WAS 2 7/8	2-11-57	2	SC. 15	EMN
A	2	C HOLES WERE A WAS 1 A HOLE WAS 10 REQ.		1	AB	EMN

ISSUE	ITEM	CHANGED FROM	DATE	CH. NO.	DRAFTS	CHECKER	ENG. APP.
TOLERANCES							
ALL OTHERS		DEC. DIM. \pm FRACTIONAL DIM. \pm 1/64 ANGULAR DIM. \pm		DRILL PUNCH, COMMERCIAL STOCK SIZES AND MANUFACTURERS TOLERANCES ARE NOT INCLUDED.			

REQ. ITEM	PART NO.	DESCRIPTION	SYMBOL
	.064	THE TECHNICAL MATERIEL CORP. MAMARONECK, NEW YORK	
	ALUMINUM	OVEN SHELL 1 MC	
	MATERIAL	525 H 32	FSS
	TYPE & TEMPER.	18 C-8-35	KZ
	HEAT TREAT. SPEC.	100	
	FINISH & SPEC. NO.	100	

1	FSS	6-8-55	
REQ. PER UNIT	MODEL	PROJECT NO.	ASSY. NO.
		DATE	
		USED ON	

CHECKED	FINAL APPROVAL
	MS-648 C

MS-648 C